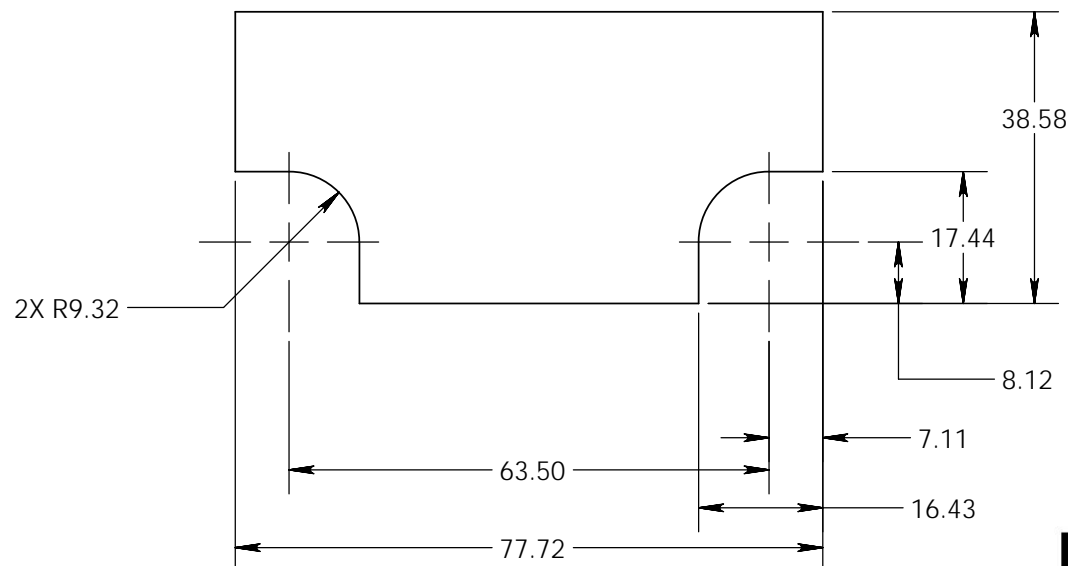


REVISIONS				
BY	REV	DESCRIPTION	ECO#	DATE
KPG	A	RELEASE TO PRODUCTION	12242	09/10/18



ALCOHOL MONITORING SYSTEMS, INC.

THIS DEVICE COMPLIES WITH PART 15. OPERATION IS SUBJECT TO THE FOLLOWING TWO CONDITIONS: (1) THIS DEVICE MAY NOT CAUSE HARMFUL INTERFERENCE (2) THIS DEVICE MUST ACCEPT ANY INTERFERENCE RECEIVED, INCLUDING INTERFERENCE THAT MAY CAUSE UNDESIRE OPERATION.

!CAUTION - CONTAINS LI-ION BATTERY. DO NOT HEAT, THROW INTO FIRE, DEFORM, SHORT-CIRCUIT, IMMERSE IN OR WET WITH WATER.

MADE IN USA



CONFORMS TO ANSI/UL STD 60950-1 AND 62368-1
 CERTIFIED TO CAN/CSA STD C22.2 NO. 60950-1 AND 62368-1
 FCC ID: P8M-BS600 MODEL: BS600
 IC: 8549A-BS600
 Input: 5V --- 1000mA
 PATENTS: WWW.SCRAMPATENTS.COM

NOTES:

- MATERIAL:
 - BASE: POLYESTER, 0.051MM (0.002") THICK
 - ADHESIVE: PERMANENT, 0.045MM (0.0018") THICK
 - OVERLAY: POLYESTER, 0.025MM (0.001") THICK, CLEAR
- COLOR: WHITE TEXT ON BLACK BACKGROUND
- REFERENCE EPS FILE [28404B, LABEL, REGULATORY, US, WBS.EPS] FOR FONT AND LAYOUT
- FINISHED LABEL SHALL MEET DURABILITY REQUIREMENTS OF EUROPEAN REGULATORY STANDARDS FOR ELECTRICAL EQUIPMENT.
- ALL MATERIAL, HARDWARE AND FINISH USED IN THE MANUFACTURE OF THIS ITEM SHALL BE ROHS AND REACH COMPLIANT

PROPRIETARY AND CONFIDENTIAL

THE INFORMATION CONTAINED IN THIS DRAWING IS THE SOLE PROPERTY OF ALCOHOL MONITORING SYSTEMS, INC. ANY REPRODUCTION IN PART OR AS A WHOLE WITHOUT THE WRITTEN PERMISSION OF ALCOHOL MONITORING SYSTEMS, INC. IS PROHIBITED.

UNLESS OTHERWISE SPECIFIED, DIMENSIONS ARE IN MILLIMETERS AND TOLERANCES ARE AS FOLLOWS:
 ANGULAR MACH: $\pm 0.5^\circ$.X $\pm .5$
 BEND: $\pm 1.0^\circ$.XX $\pm .25$
 .XXX $\pm .125$

Alcohol Monitoring Systems, Inc.

1241 West Mineral Avenue, Suite 200
 Littleton, Colorado 80120

Phone: (303)989-8900 Fax: (303)791-4262

FILENAME			--			LABEL, REGULATORY, GPS BEACON		
MATERIAL		SEE NOTES	DRAWN	K GLAVAN	DATE			
FINISH		--	CHECKED		DATE	SIZE	DWG. NO.	
DO NOT SCALE DRAWING THIRD ANGLE PROJECTION		APPROVED		DATE	A	31245		REV.
						A		
						SCALE: 1:1		SHEET: 1 OF 1

W.D.W. NO. 31245 REV. A