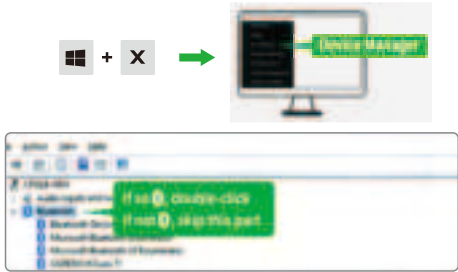


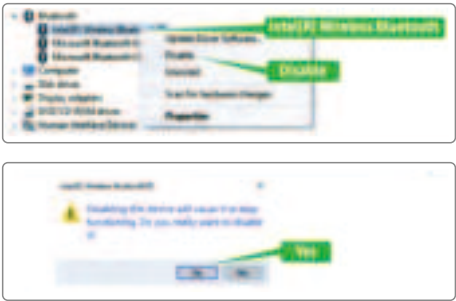
User's Manual

I . Disable Built-in Bluetooth Before Plugging in Adapter

- ❶ Check if there is built-in Bluetooth in your computer before plugging in the adapter:**
- ① Option 1: Press the "Windows" + "X" to select "Device Manager".
 - ② Option 2: Right-click "This PC" > "Manage" > "Device Manager"
- If there is a "Bluetooth" icon in the "Device Manager", please follow the steps below to disable it. if not, please skip this part.



- ❷ Disable Built-in Bluetooth**
- Double-click the Bluetooth icon > right-click on "Intel(R) Wireless Bluetooth" > select "Disable device" > Click on "Yes".
- Default Bluetooth: Generic Bluetooth Radio, Intel(R) Wireless Bluetooth (R).

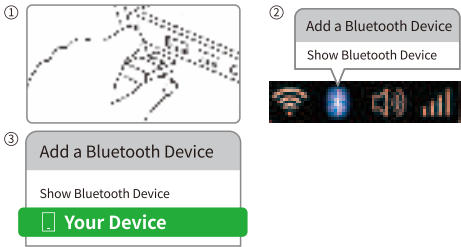


II . Windows 7 (Driver is Required)

- ❶ Download the Driver:**
- ① Go to website and Download .
<https://bit.ly/3Hqj8CC>
 - ② Contact customer service.
- ❷ Install the Driver:**
- ① Unzipped the package, then double-click "setup.exe" and follow up the wizard to complete the installation.
 - ② After installation, wait for the computer to restart.
- You can also refer to the "installation Guide" in the package for more detailed information.

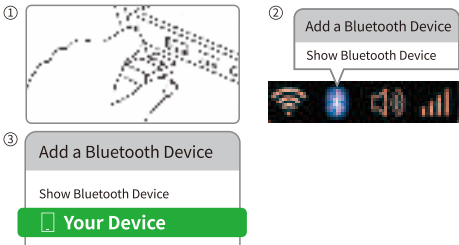


- ❸ Pair Bluetooth Devices:**
- ① Plug the adapter into a computer connected to the internet.
Note: DO.NOT plug the adapter into your computer before disabling the built-in Bluetooth.
 - ② Right-click the Bluetooth icon in the taskbar and choose "Add a Bluetooth Device" or select "Start" > "Settings" > "Devices". Please ensure to turn on your device's Bluetooth.
 - ③ Select your Bluetooth device from the list and follow the wizard to complete pairing.



III. Windows 8.1/10/11 (Plug and play)

- ① Plug the adapter into a computer connected to the internet.
Note: DO.NOT plug the adapter into your computer before disabling the built-in Bluetooth.
- ② Right-click the Bluetooth icon in the taskbar and choose "Add a Bluetooth Device" or select "Start" > "Settings" > "Devices". Please ensure to turn on your device's Bluetooth.
- ③ Select your Bluetooth device from the list and follow the wizard to complete pairing.



Troubleshooting

- 1. Why is the Bluetooth function not working and computer shows "Error Code 31"?**
- The built-in Bluetooth in your computer is not disabled, causing the adapter cannot enable the driver, please disable it:
- ① Remove the adapter, then go to "Device Manager" > double-click the Bluetooth icon > right-click "Intel(R) Wireless Bluetooth" > select "Disable device" > click "Yes".
Note: common Bluetooth name may be Generic Bluetooth Radio, Intel(R) Wireless Bluetooth (R).
 - ② Replug the adapter.
- 2. What should I do if the Bluetooth icon doesn't appear?**
- ① Ensure there are no other Bluetooth devices installed on the computer. If there are, disable all existing Bluetooth devices in "Device Manager", then insert the adapter and try again.
 - ② Sometime the Bluetooth icon may be hidden: select "Start" > "Settings" > "Devices" > Click "More Bluetooth Options" > "Options" > Check "Show the Bluetooth icon in the notification area".

3. Why can't i find my Bluetooth device?

- ① Please make sure that your device supports Bluetooth.
- ② Please ensure your Bluetooth device is in pairing mode.
- ③ Keep your Bluetooth device around/near the adapter at a range of 20m/66ft.
- ④ Please replug the adapter

4. Can the adapter connect to multiple devices at a time?

The adapter can connect up to 7 Bluetooth devices, such as headphones/speakers, keyboards, mice, game controllers, and phones. However, if two Bluetooth audio output devices (like headphones/speakers) connect to the adapter, only one will work.

NOTE: This equipment has been tested and found to comply with the limits for a Class B digital device, pursuant to part 15 of the FCC Rules. These limits are designed to provide reasonable protection against harmful interference in a residential installation. This equipment generates, uses and can radiate radio frequency energy and, if not installed and used in accordance with the instructions, may cause harmful interference to radio communications. However, there is no guarantee that interference will not occur in a particular installation. If this equipment does cause harmful interference to radio or television reception, which can be determined by turning the equipment off and on, the user is encouraged to try to correct the interference by one or more of the following measures:

- Reorient or relocate the receiving antenna.
- Increase the separation between the equipment and receiver.
- Connect the equipment into an outlet on a circuit different from that to which the receiver is connected.
- Consult the dealer or an experienced radio/TV technician for help

Changes or modifications not expressly approved by the party responsible for compliance could void the user's authority to operate the equipment.

This device complies with Part 15 of the FCC Rules. Operation is subject to the following two conditions:

(1) this device may not cause harmful interference, and (2) this device must accept any interference received, including interference that may cause undesired operation.

This device contains licence-exempt transmitter(s)/receiver(s) that comply with Innovation, Science and Economic Development Canada's licence-exempt RSS(s). Operation is subject to the following two conditions:

- (1) This device may not cause interference.
- (2) This device must accept any interference, including interference that may cause undesired operation of the device.

L'émetteur/récepteur exempt de licence contenu dans le présent appareil est conforme aux CNR d'Innovation, Sciences et Développement économique Canada applicables aux appareils radio exempts de licence. L'exploitation est autorisée aux deux conditions suivantes :

- (1) L' appareil ne doit pas produire de brouillage;
- (2) L' appareil doit accepter tout brouillage radioélectrique subi, même si le brouillage est susceptible d' en compromettre le fonctionnement.