

# Installation Guide

---

FR1500S

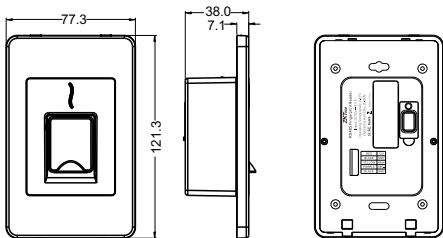
Version: 1.0



Due to regular upgrades of systems and products, ZKTeco could not guarantee exact consistency between the actual product and the written information in this manual.

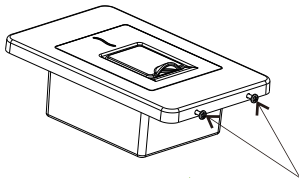
# Installation

Dimensions(mm)



**Note: Not all the devices have the fingerprint cover. The real product prevails.**

Procedure to be followed before installation

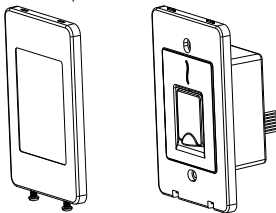


**STEP 1**

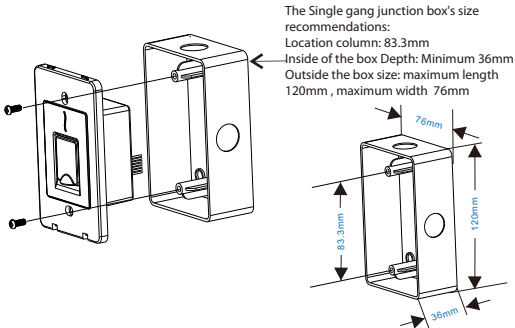
Remove both the screws

**STEP 2**

Take out the front panel as shown below

**Method 1: Mounting on the standard Single gang junction box**

Lay the cables from the desired hole in Single gang junction box and fix the machine part to the box part.



## Method 2: Mounting inside the wall

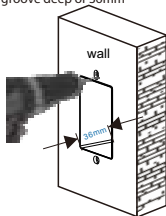
**STEP 1**

Place the mounting sticker to the place where device needs to be installed



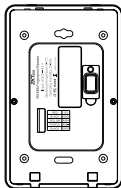
**STEP 2**

Drill fixing holes and dig mounting groove deep of 36mm



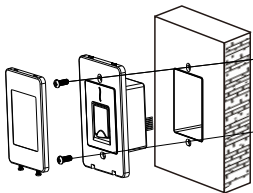
**STEP 3**

If cables need to be laid from behind then it must be done before installing



**STEP 4**

Install the device with the screws



**STEP 5**

After installing the back plate attach the machine part in the same reverse manner as shown in previous page