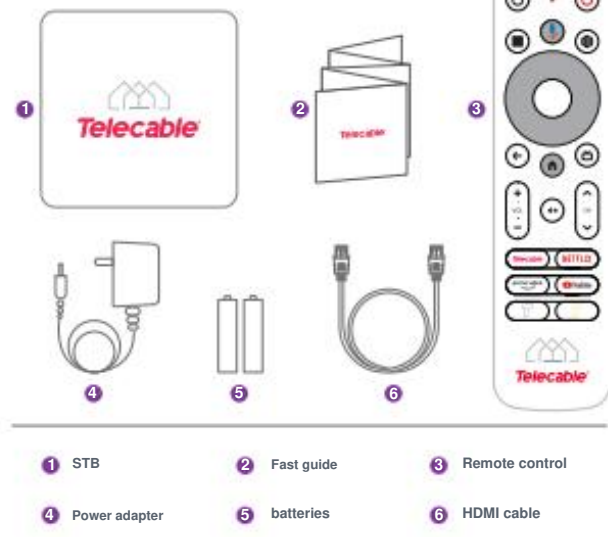
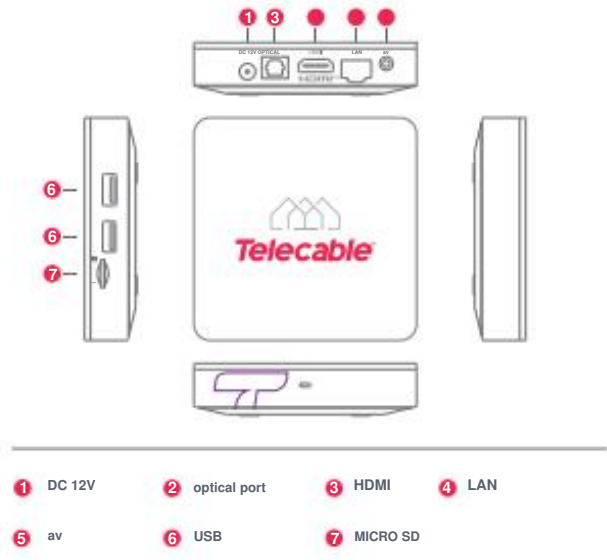


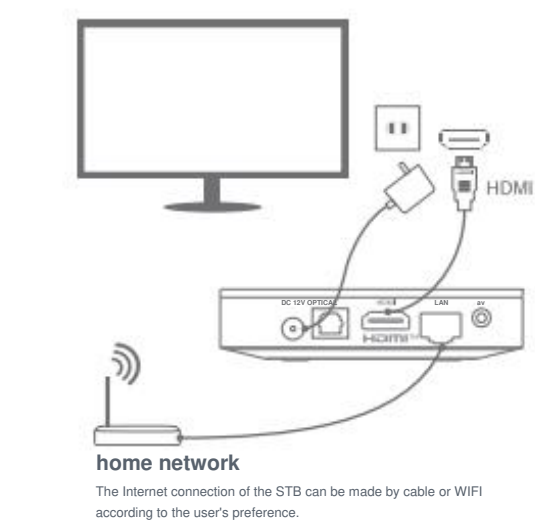
► Fast guide



► Device Information



► connection diagram



► Remote control



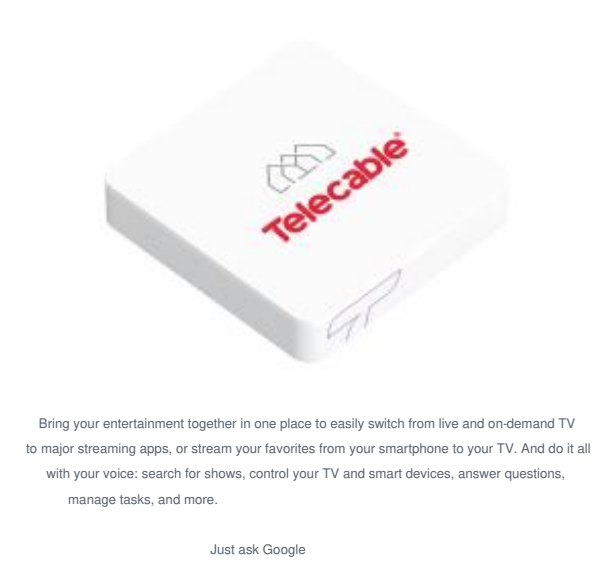
► Remote control



► Setting



► Entertainment



► Specifications

Media Receiver	
Video	
video decoding	VP9 Profile-2 up to 4Kx2K@60fps H.265 HEVC MP-10@L5.1 up to 4Kx2K@60fps AVS2 P2 profile up to 4Kx2K@60fps H.264 AVC-HP@L5.1 up to 4Kx2K@30fps H.264 MVC up to 1080P@60fps MPEG-4 ASP@L5 up to 1080P@60fps (ISO-14496) WMV/VVC-1 SP/MP/HP up to 1080P@60fps AVS-P16(AVS+) /AVS-P2 3Zhuo Profile up to 1080P@60fps MPEG-2 MP/HL up to 1080P@60fps (ISO-13818) MPEG-1 MP/HL up to 1080P@60fps (ISO-11172) RealVideo 8/8.10 up to 1080P@60fps
video file format	Supports *.mkv, *.wmv, *.mpg, *.mpeg, *.dat, *.avi, *.mov, *.iso, *.mp4, *.rm and *.jpg file formats
Video output	HDMI 2.1 , HDCP2.2
Aspect Ratio Auto, full screen	
Video resolution 480i/p, 576i/p, 720p, 1080i/p and 4Kx2K	
Power	
DC input range	12V 1A
Power Consumption Maximum	12W

► Safety information



► FCC Statement

This device complies with Part 15 of the FCC Rules. Operation is subject to the following two conditions: (1) this device may not cause harmful interference, and (2) this device must accept any interference received, including interference that may cause undesired operation.

Changes or modifications to this unit not expressly approved by the party responsible for compliance could void the user's authority to operate the equipment.

NOTE: This equipment has been tested and found to comply with the limits for a Class B digital device, pursuant to Part 15 of the FCC Rules. These limits are designed to provide reasonable protection against harmful interference in a residential installation. This equipment generates, uses, and can radiate radio frequency energy and, if not installed and used in accordance with the instructions, may cause harmful interference to radio communications. However, there is no guarantee that interference will not occur in a particular installation. If this equipment does cause harmful interference to radio or television reception, which can be determined by turning the equipment off and on, the user is encouraged to try to correct the interference by one or more of the following measures:

- Reorient or relocate the receiving antenna.
- Increase the separation between the equipment and receiver.
- Connect the equipment into an outlet on a circuit different from that to which the receiver is connected.
- Consult the dealer or an experienced radio/TV technician for help.

This device and its antenna(s) must not be co-located or used in conjunction with any other antenna or transmitter.

Radiation Exposure Statement
To comply with FCC RF exposure guidelines, this equipment must be installed and operated with a minimum distance of 20 cm from your body.



yyyyyy

1.yyyyyyy95*95mm

2.yyyyyyyyyyyyyyyyyyyyyyy

3.yyyyyyyyyyyyyyyyyyy

4.yyy

5.80gyyy4C

	更 改 记 录								
		DCN/ECN编号	版 本	变 更 内 容				签名	日期
	设计			名称	ÿÿÿ	材料			
ÿÿÿÿ			单位			mm			
ÿÿÿÿ									
未注尺寸公差		ÿÿÿÿ		型号		共 张		第 张	
0<L≤200	1mm	ÿÿÿÿ							
200<L≤400	2mm	ÿÿÿÿ			图号	SY.SMS.A3.GZ2304017		ÿÿÿÿÿÿÿÿÿÿÿÿ Shenzhen SEI Robotics Co., Ltd.	
		审批		物料编号	3301-ML0476-PP0A				