



深圳景创智航技术有限公司

Shenzhen KingChuang Smart Navi Technology Co., Ltd.

样品承认书

(一式三份)

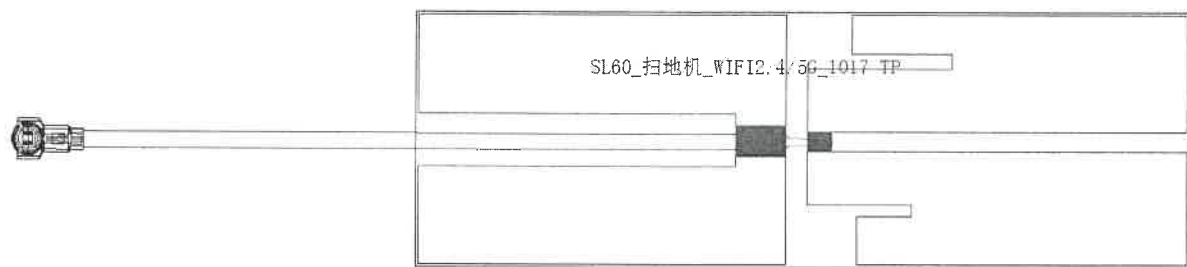
版本号: A1

QR585616A1

供应商名称(全称)	深圳市普达微高科技有限公司			Shenzhen Puda micro high-tech Co., LTD Building B 607, Shenzhen Qianwan Hard Science and Technology Industrial Park, Nanchang Community, Xixiang Street, Baoan District, Shenzhen
景创智航料号(ID)	954616	供方料号(ID)	YSBJC0007WIFI010	
物料名称	FPC排线			
物料描述	02013天线 SL60/205MM-FPC:48.35*15.85-SL60 /编号;R10.1101.60			
物料类别	<input type="checkbox"/> 关键元器件 <input type="checkbox"/> 电子料 <input type="checkbox"/> 塑胶件 <input type="checkbox"/> 五金件 <input type="checkbox"/> 包材料/辅料 <input type="checkbox"/> 其他			
承认发起	<input type="checkbox"/> 新产品 <input type="checkbox"/> 新供应商 <input type="checkbox"/> 工程变更 <input type="checkbox"/> 持续改善 <input type="checkbox"/> 其他			
Approver Signatures				
以下内容由景创智航公司填写:				
采购:	研发:	品质:	批准(景创智航公章): 2022-12-02 受控章	
日期: 2022.12.5	日期: 2022.12.5	日期: 2022.12.5		
以下内容由供应商填写:				
制定:	研发:	品质:	批准(供应商公章): 440306036347	
日期: 2022.12.5	日期: 2022.12.5	日期: 2022.12.5		
备注: 承认书具体资料参见以下要求(重要信息, 请务必查阅)				
1. 样品				
2. 图纸/尺寸检测报告/外观检验报告/功能性能检测报告/可靠性检测报告				
3. 材质证明 MSDS 报告				
4. ROHS 报告(含卤素测试)/REACH 报告				
5. 安规要求认证及测试报告				
6. 禁用物料成分按相关规定对照				
包装方式(最小包装数量/方便作业及搬运/防护措施/包材是否回收说明)				

WIFI

1. Explanation of Product number :



Product Code:

(1) Customer: 景创

(2) Antenna Name: WIFI天线 (WIFI Antenna)

(3) Connector: Welding

2. Features

- *Stable and reliable in performances
- *Compact size
- *RoHS compliance

3. Applications

- * IEEE802.11 (b/g/n/a)
- * Hand-held devices when WIFI (802.11b/g/n/a) functions are needed

4. Description

Holy bond's FPC antenna series are specially designed for WIFI (802.11b/g/n/a) applications. Based on Holy bond's proprietary design and processes, this FPC antenna has excellent stability and sensitivity to consistently provide high signal reception efficiency.

5. Electrical Specifications

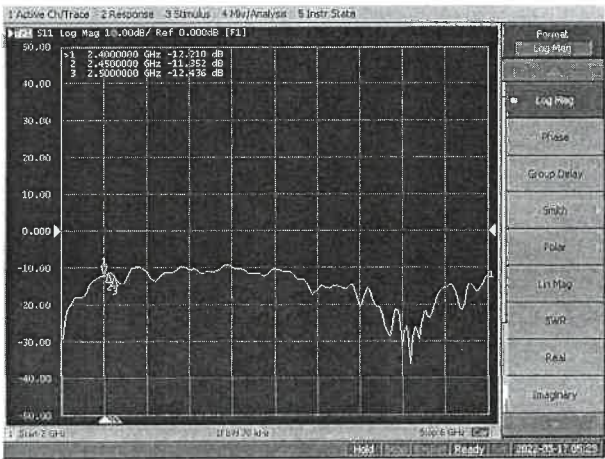
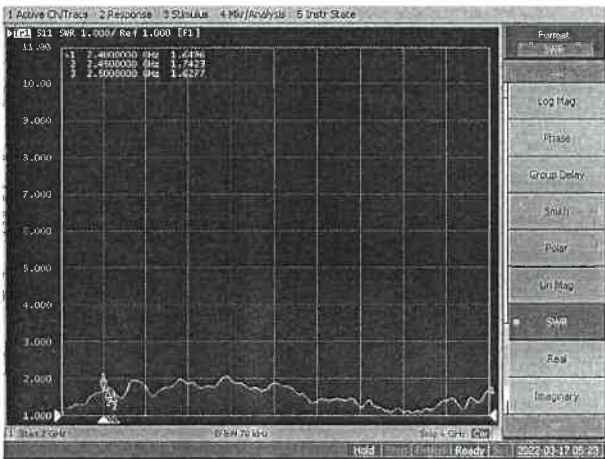
5-1

Characteristics	Specifications	Unit
Outline Dimensions	48.24x15.79x 0.12	mm
Center Frequency	2.4-2.5+5.15-5.85	GHz
Bandwidth(under-10dB return loss)	130min	MHz
VSWR	3max	

5-2.

VSWR

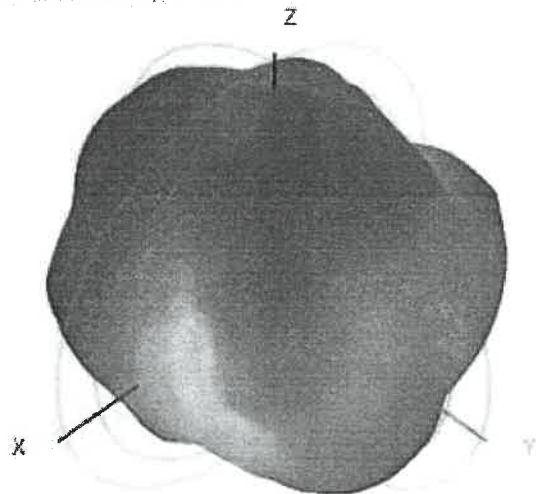
S11



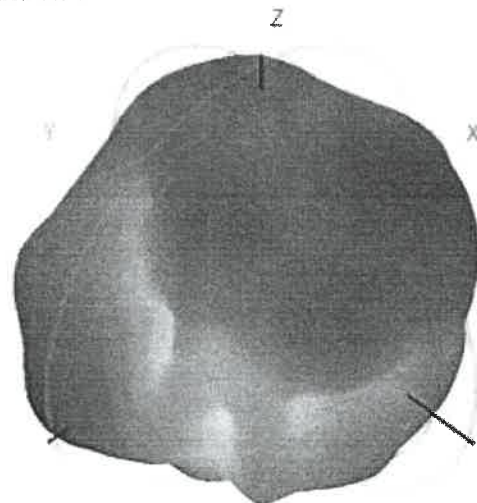
5-3.WIFI +BT Antenna Gain/Efficiency/Radiation Pattern of 3D

Frequency (MHz)	2400.0	2410.0	2420.0	2430.0	2440.0	2450.0	2460.0	2470.0	2480.0	2490.0	2500.0	5150.0	5350.0	5500.0	5650.0	5850.0
Efficiency (dBi)	-1.71	-1.64	-1.61	-1.69	-1.78	-1.74	-1.69	-1.62	-1.65	-1.76	-1.77	-3.00	-2.82	-3.18	-3.21	-3.36
Gain (dBi)	4.28	4.27	4.17	4.19	4.22	4.29	4.44	4.50	4.35	4.10	4.00	3.84	4.19	2.72	2.14	2.01
Efficiency (%)	67.46	68.60	69.01	67.73	66.36	67.03	67.73	68.90	68.45	66.68	66.54	50.16	52.26	48.08	47.77	46.10

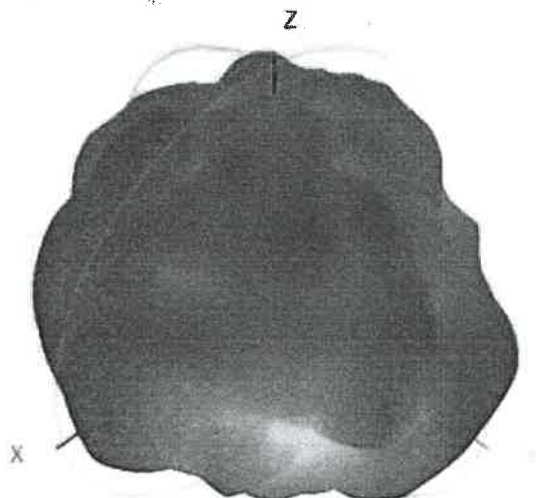
2450.0MHz H+V, Eff: 67.0%



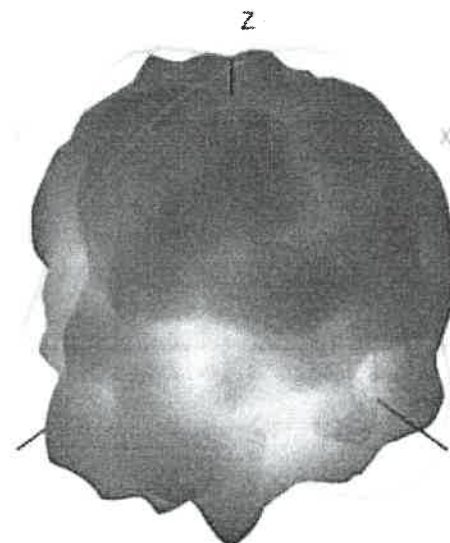
Back View



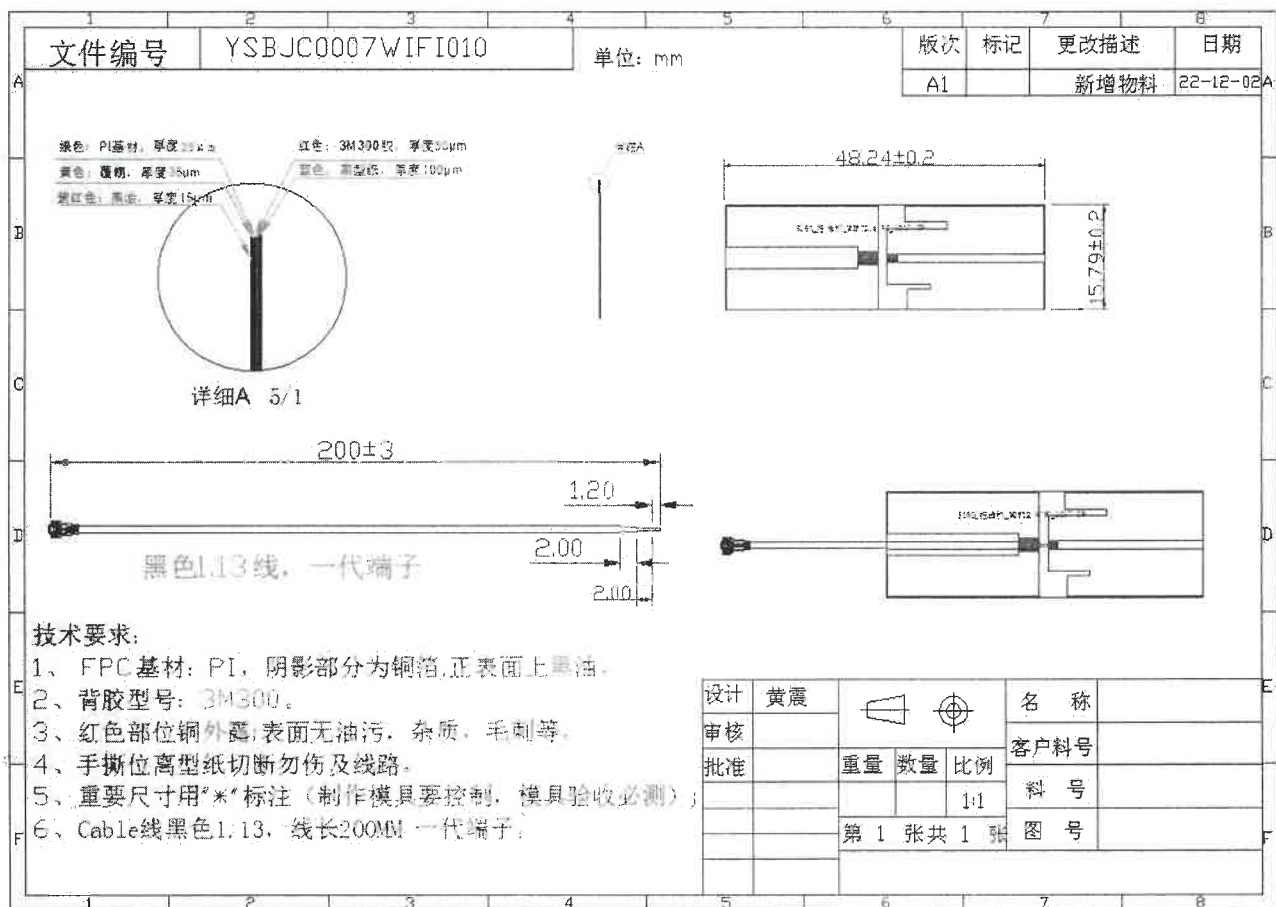
5850.0MHz H+V, Eff: 46.1%



Back View



6. Antenna Dimensions (unit: mm)



绿色: PI基材, 厚度25μm

红色: 3M300胶, 厚度50μm

黄色: 覆铜, 厚度35μm

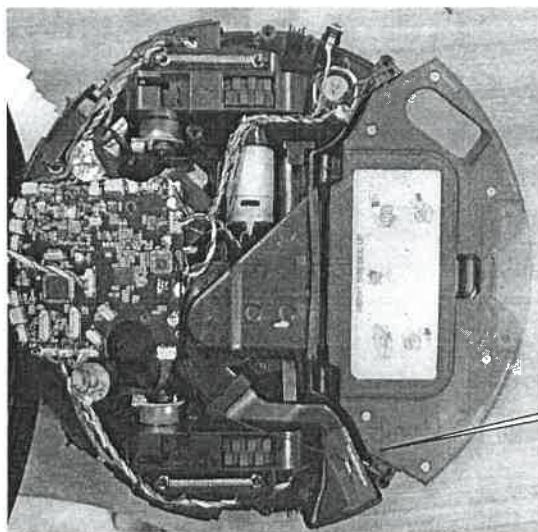
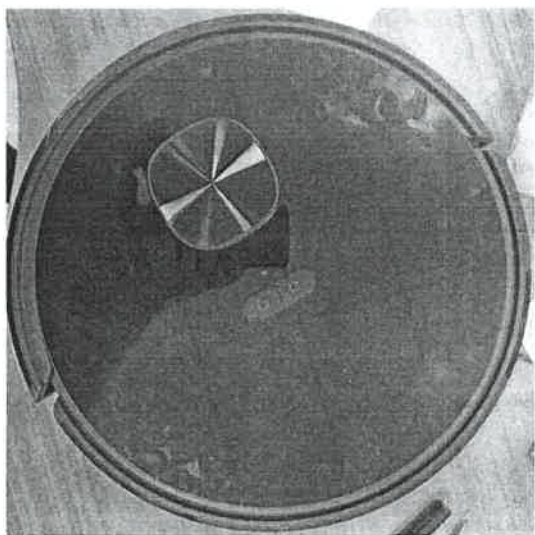
蓝色: 离型纸, 厚度100μm

紫红色: 黑油, 厚度15μm



详细A 5/1

7. Antenna Picture



WIFI 天线

