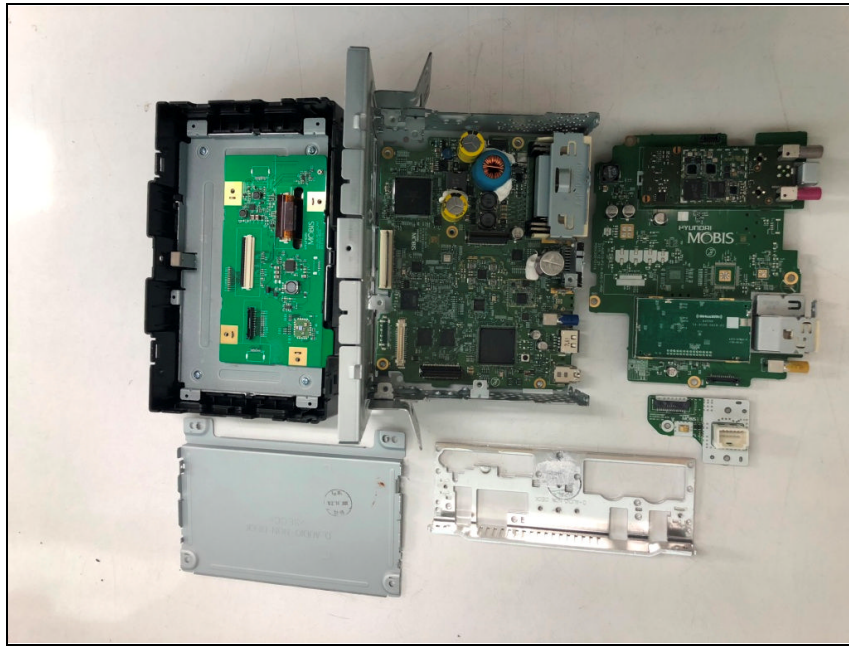


***Internal photos of EUT***

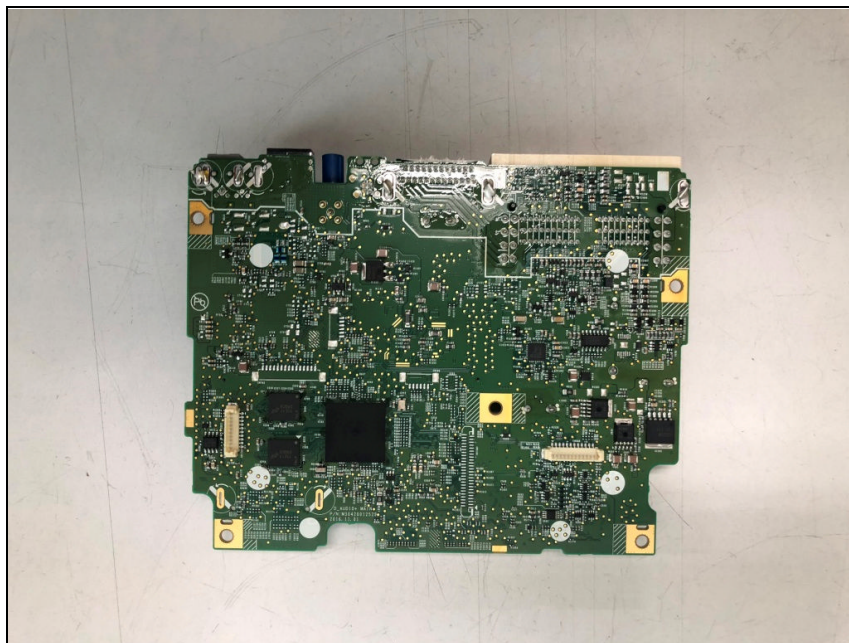
## *Internal view of EUT*



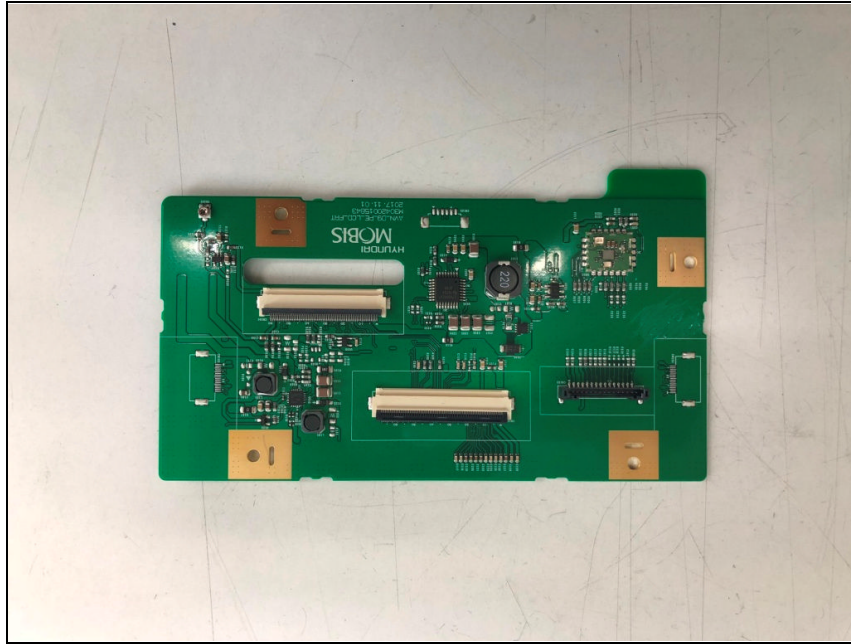
***Top view of Main PCB***



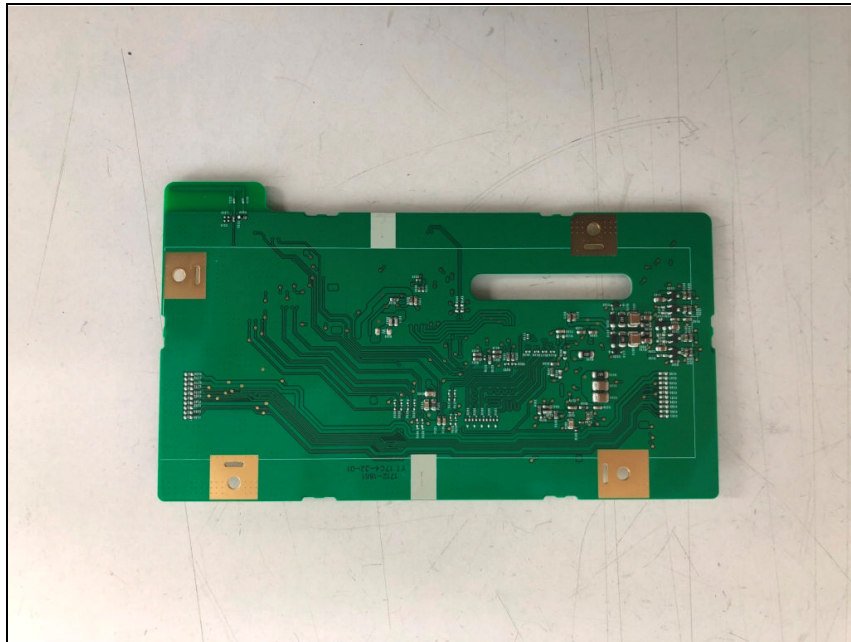
***Bottom view of Main PCB***



## *Top view of LCD PCB*



## *Bottom view of LCD PCB*

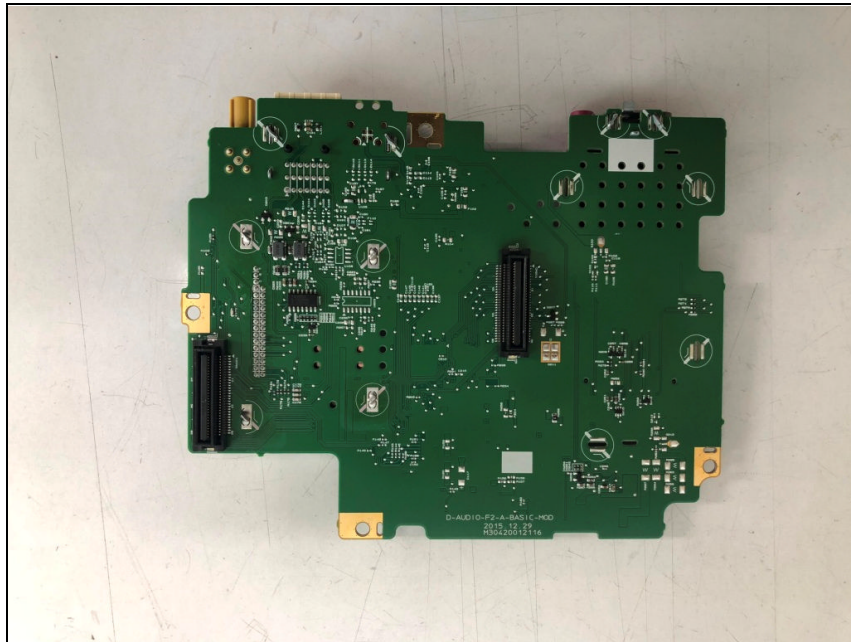




## Top view of Sub PCB1



## Bottom view of Sub PCB1



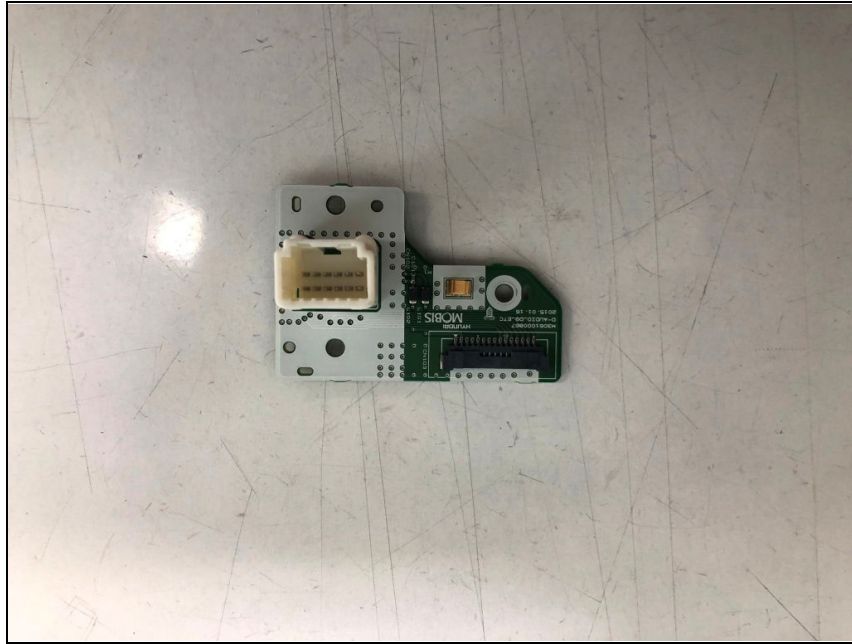
***Top view of Sub PCB2***



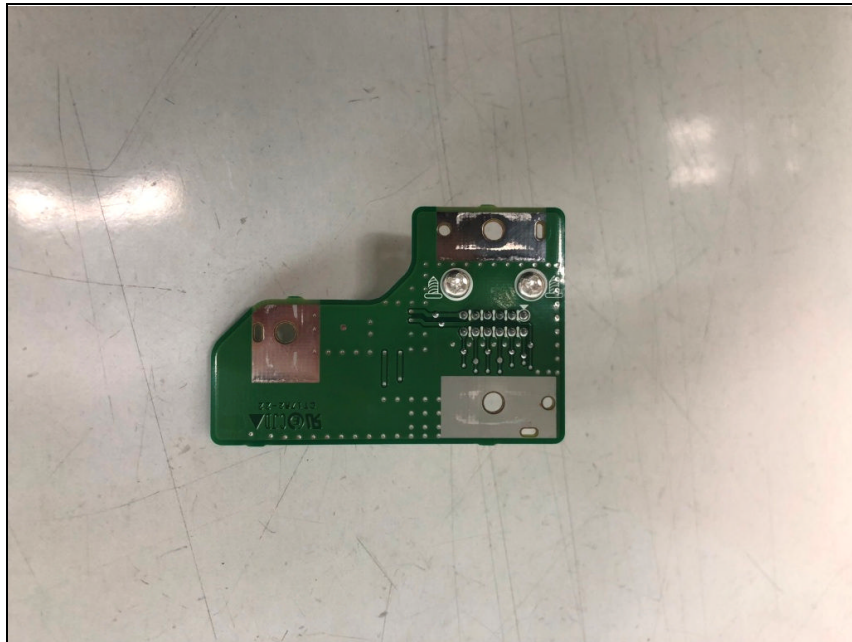
***Bottom view of Sub PCB2***



## *Top view of Sub PCB3*

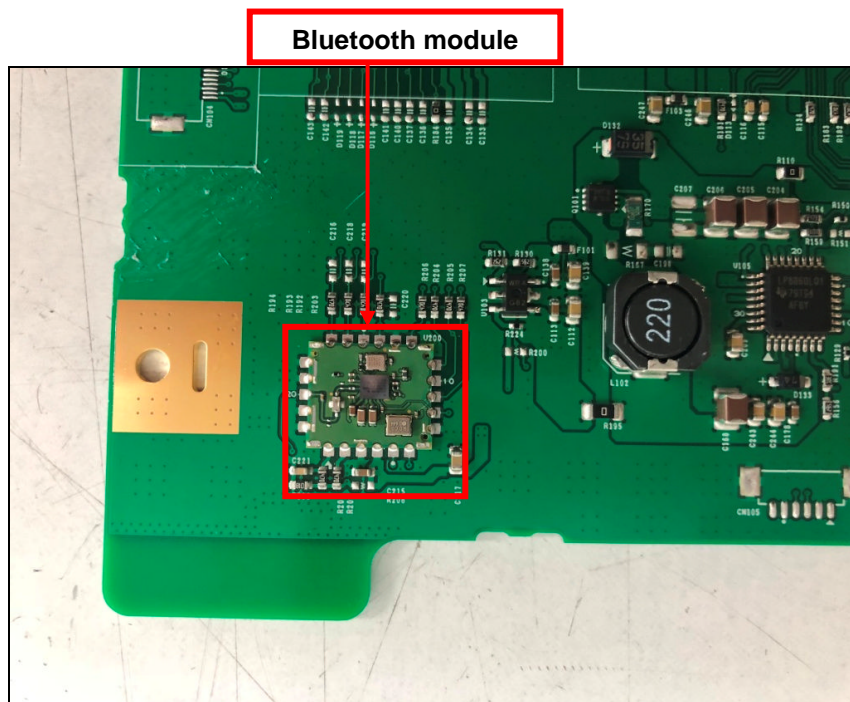


## *Bottom view of Sub PCB3*





## View of Bluetooth module



## View of Bluetooth antenna

