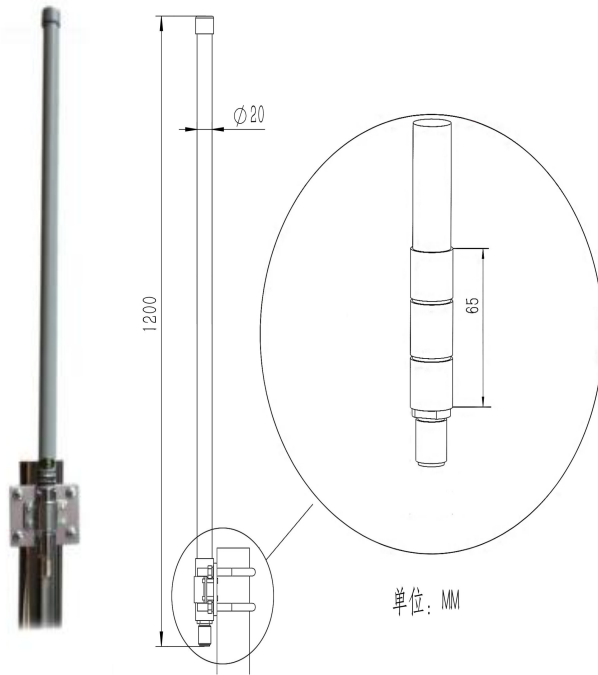


TQJ-2400H12 OMNI FIBERGLASS ANTENNA SPECIFICATION



Applications:

2.4GHz WLAN system base station antenna
WiFi system
point to multipoint

Features:

High gain
Low VSWR
High quality fiberglass tube radome
Steel mounting kit
Mast mountin

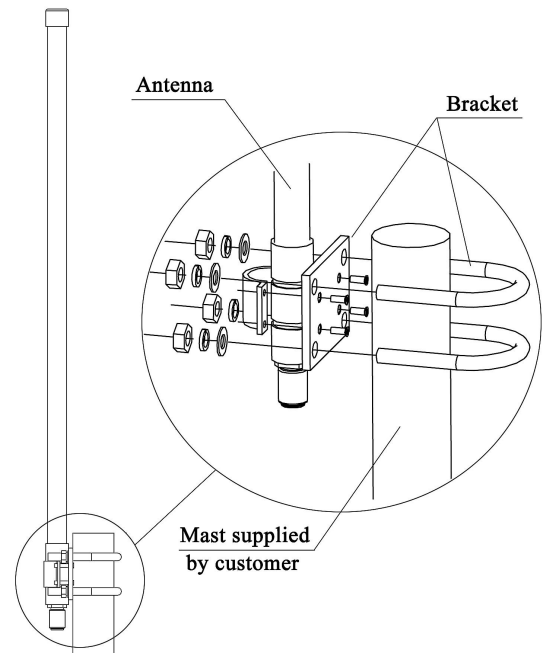
Electrical specifications

Frequency Range- MHz	2400~2500
Bandwidth -MHz	100
Gain -dBi	12
Vertical Beamwidth °	8°
VSWR	≤1.5
Polarization	Vertical
Max Power- W	100
Nominal Impedance-Ω	50

Mechanical specifications

Connector	N male
Antenna Dimension-mm	Φ20*1200
Weight- kg	1
The Work Temperature-℃	-30°~60°
Rated Wind Velocity- m/s	60

Installation Sketch Map



STATIONARY WAVE PATTERN

