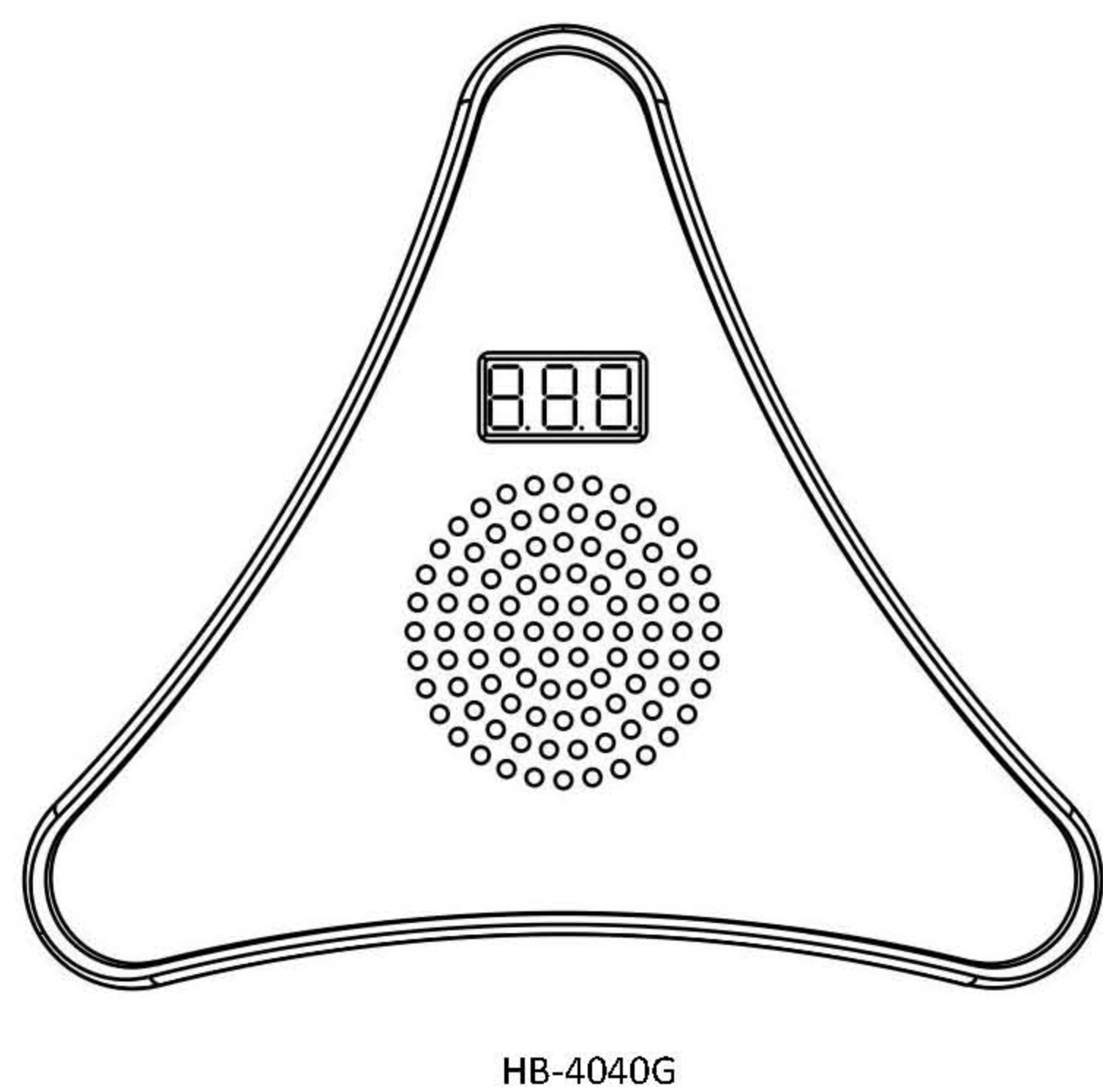
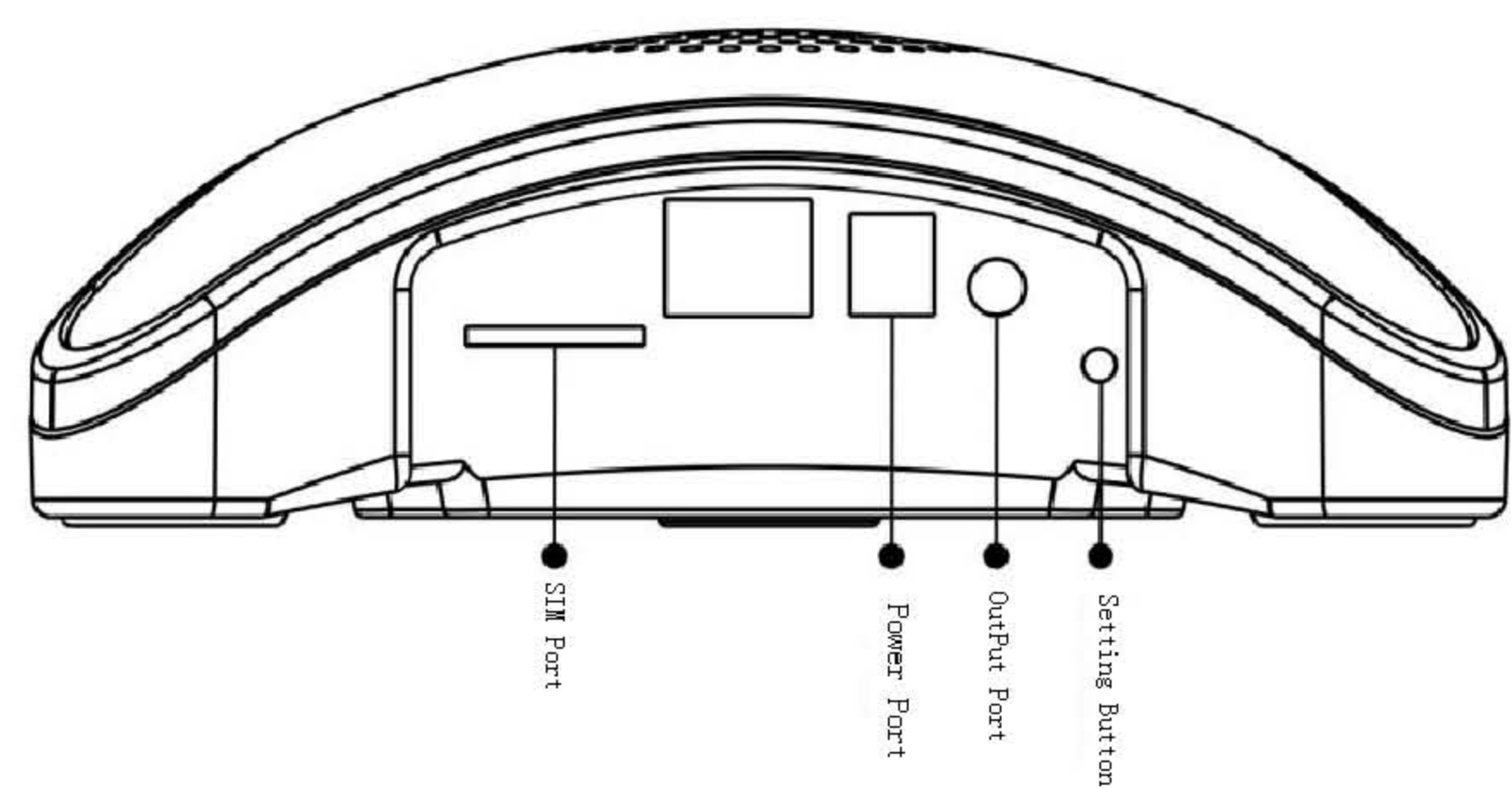


Manual For Network Alarm Panels



HB-4040G

1.Connections Of Cables



SIM Card Slot: Only 2G SIM Card is available

Power Interface: DC15V/1.5A

Output Interface : DC12V/0.5A (Linkage other devices--Siren and etc)

Set Button: Restore the factory default

2.Technical Parameters

Alarm Panel Parameter	HB-4040G
Working Voltage	DC15V/1.5A
Wireless Frequency	434.6MHz FSK
GSM Frequency	900/1800/1900/2100 MHz
Backup Battery	4×3.2V
Dimension	163×146×16 (mm)

3.Instructions for alarm panels

LCD Display:

-01/01 (01 blinking)	On Setting Mode
-F0	Restored factory default
-F6	Connected to Server Success
No Display	Static working status,alarm panel has been connected the detectors or remote controls
-XX (-blinking)	In learning detector status (XX : 01...99 zone number)
_XX	Learned detector success (XX : 01...99 zone number)
-XX	Alarm (XX : 01...99 zone number)
-0X (-blinking)	In learning remote control status (X: 1-4 zone number)
_0X	Learned remote control success (X: 1-4 zone number)
-F5	Emergency Alarm(SOS)
-F7	Connect to server failure
-F2	Deleted account success
-F8	SIM card faults
HXX	The signal of the SIM card less than 13 (XX: 00-13)

Indicator lights : Red---Arm Status

Yellow---Disarm Status

Delete Account :Press the **“Setting Button” Once,LCD Display” -01” (01 Blinking)**, and then hold the **“Setting Button”** for 5 seconds , Release the **“setting button”** when the LCD Display” -F2” ;

Restore factory default : Press the **“Setting Button” Once,LCD Display” -01” (01 Blinking)**, and then hold the **“Setting Button”** for 10 seconds , Release the **“setting button”** when the LCD Display” -F0” ;

4.APP OPERATIONS

(1)Phone Configuration

Smart Phone;

Android(4.0)or IOS Operating System

≥2G RAM

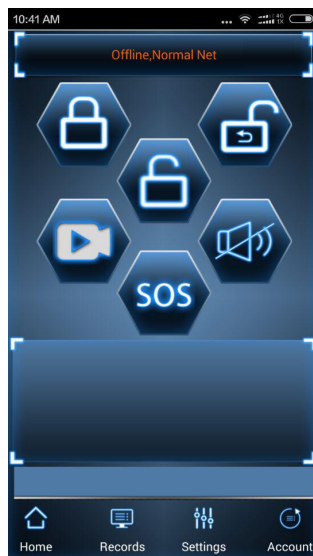
≥2G Storage Memory

2. Download /Install/Run the APP

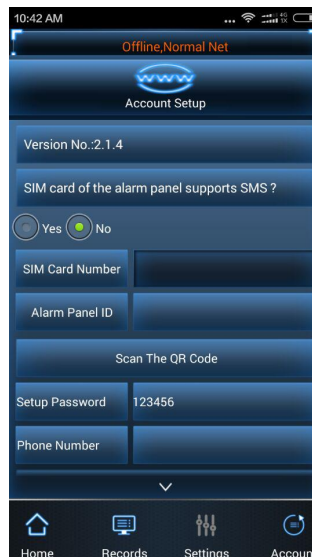
1.Insert the SIM Card and Power On (Note: SIM Card should support 2G)



2.Download and Install the SAFERHOMEE App



3. Press “Account” to enter “Account Setup” (Original Password is 123456)



4. Please fill the contents as below:

10:44 AM

Offline, Normal Net

Account Setup

☐ Yes ☒ No

SIM Card Number 8613484202455

Alarm Panel ID 861172033328647

Scan The QR Code

Setup Password 123456

Phone Number 18969872709

Submit

Home Records Settings Account

SIM Card of the alarm panel supports SMS?

Select “Yes” or “No”

SIM Card Number(for example:8613484202455)

Alarm Panel ID

Setup Password(Factory Default:123456)

Phone Number(for example 18969872709)

5.Submit and Confirm

After the confirmation,the App will be online after a few seconds..

6.App Instructions:



7.How to change the password(for example:change the password to 654321)

Press “Settings” ----Select “Password” ---Fill the original password and new password---Press “√” to confirm

8.How to add the detectors

Press “ Settings ” ----Select “ Detectors ” --Choose the zone number/zone type/zone note--Press”Match”---Trigger the detector

9.How to add the remote control

Press “Settings” ----Select “Remote Control” --Choose the zone number--Press”+”---Trigger the remote control

FCC Statement

This equipment has been tested and found to comply with the limits for a Class B digital device, pursuant to Part 15 of the FCC Rules. These limits are designed to provide reasonable protection against harmful interference in a residential installation. This equipment generates uses and can radiate radio frequency energy and, if not installed and used in accordance with the instructions, may cause harmful interference to radio communications. However, there is no guarantee that interference will not occur in a particular installation. If this equipment does cause harmful interference to radio or television reception, which can be determined by turning the equipment off and on, the user is encouraged to try to correct the interference by one or more of the following measures:

- Reorient or relocate the receiving antenna.
- Increase the separation between the equipment and receiver.
- Connect the equipment into an outlet on a circuit different from that to which the receiver is connected.
- Consult the dealer or an experienced radio/TV technician for help.

This device complies with part 15 of the FCC Rules. Operation is subject to the condition that this device does not cause harmful interference

Changes or modifications not expressly approved by the party responsible for compliance could void the user's authority to operate the equipment.

This equipment complies with FCC radiation exposure limits set forth for an uncontrolled environment. This equipment should be installed and operated with minimum distance 20cm between the radiator & your body.