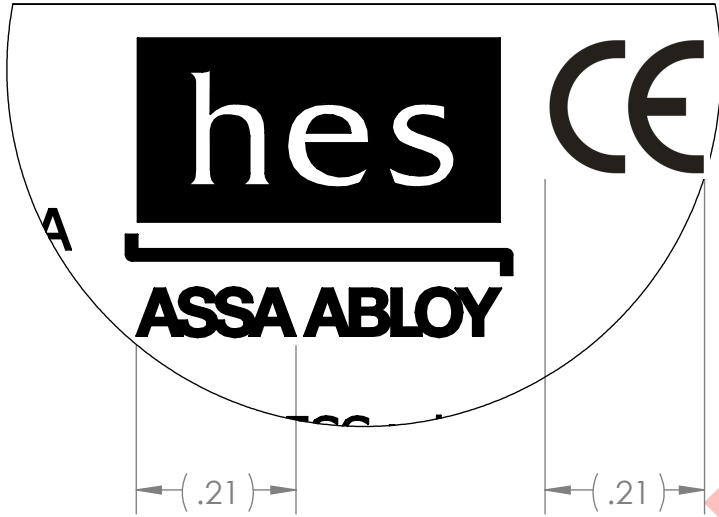
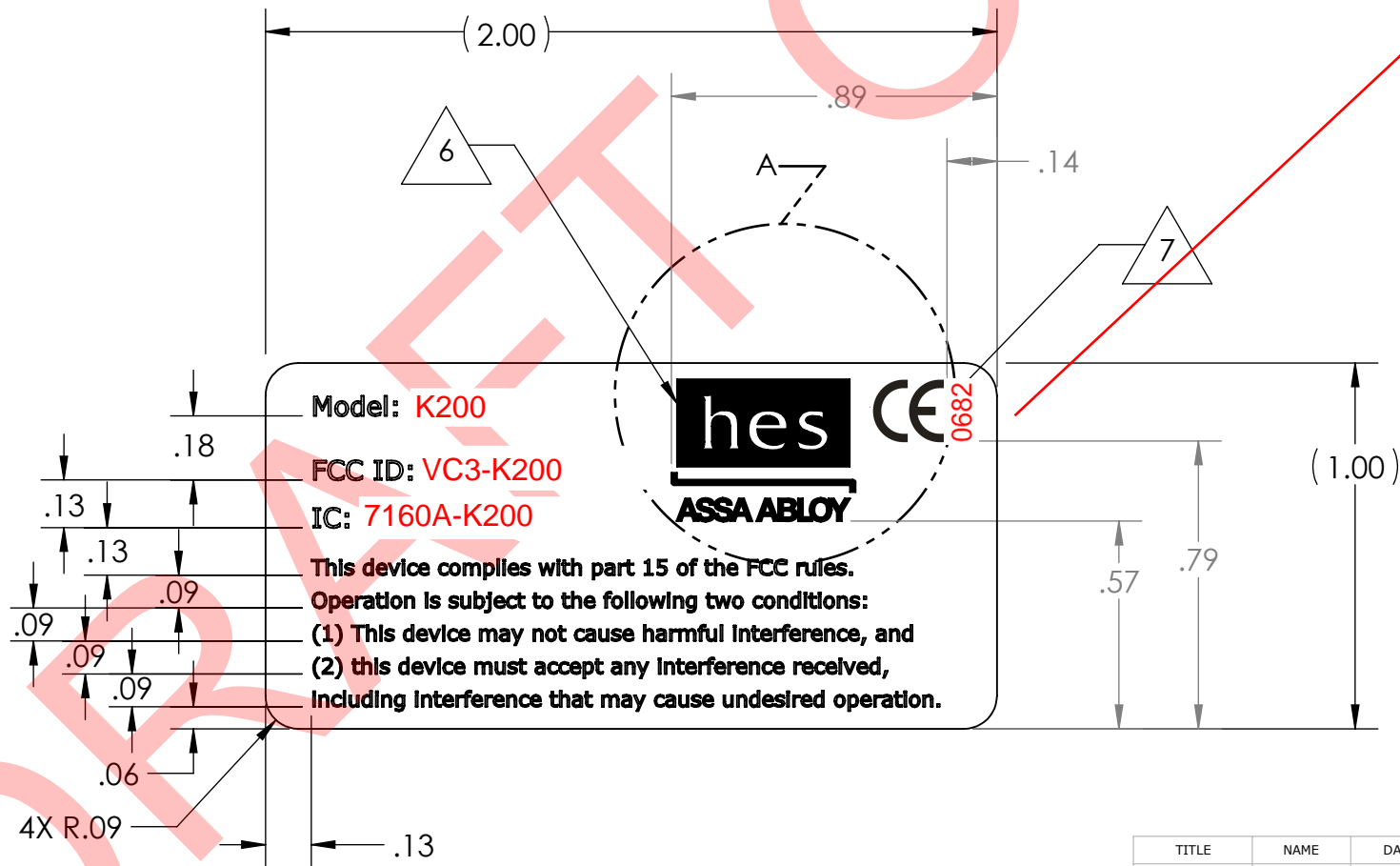


NOTES: UNLESS OTHERWISE SPECIFIED.

- COMPONENTS AND OR PARTS TO COMPLY WITH EU DIRECTIVE 2011/65/EU (RoHS).
- MATERIAL: COATED PAPER WITH PERMANENT LATEX ADHESIVE.  
USE LABEL P/N: 3000021.006 OR HES APPROVED EQUIVALENT.
- WHITE LABEL WITH BLACK LETTERING,
- FINISH: PRINTED IN DENSE BLACK INK. TEXT SHALL BE SHARP AND LEGIBLE.
- FONT: ARIAL  
FONT HEIGHT: 4 POINT MINIMUM  
ALIGNMENT: LEFT JUSTIFIED
- HES LOGO DEFINED BY DRAWING 4000505.001.
- CE LOGO DEFINED BY DRAWING XXXXXXXX.XXX.
- PARTS SHALL BE CLEAN AND FREE OF FOREIGN MATERIAL.
- PARTS SHALL BE PACKAGED TO PREVENT DAMAGE RESULTING FROM SHIPPING, STORAGE, AND HANDLING.



DETAIL A  
SCALE 4 : 1  
SIZE RELATIONSHIP SHALL  
BE MAINTAINED



Model: K200

FCC ID: VC3-K200

IC: 7160A-K200

This device complies with part 15 of the FCC rules.

Operation is subject to the following two conditions:

- This device may not cause harmful Interference, and
- this device must accept any Interference received, including Interference that may cause undesired operation.

Hanchett Entry Systems, An ASSA ABLOY Group Company  
FCC ID: VC3-K200  
IC ID: 7160A-K200

THIS DOCUMENT IS THE CONFIDENTIAL PROPERTY OF HES, INC. AND IS LOANED SUBJECT TO RETURN UPON DEMAND. TITLE TO THIS DOCUMENT IS NEVER TO BE SOLD OR TRANSFERRED FOR ANY REASON. THIS DOCUMENT IS TO BE USED ONLY PURSUANT TO WRITTEN LICENSE OR WRITTEN INSTRUCTIONS OF HES, INC. ALL RIGHTS TO DESIGN AND INVENTIONS ARE RESERVED BY HES, INC. POSSESSION OF THE DOCUMENT IS ACCEPTED SUBJECT TO THE FOREGOING.  
© HES, INC. 2014

UNLESS OTHERWISE SPECIFIED  
DIMENSIONS ARE IN INCHES  
TOLERANCES ARE:  
FRACTIONAL ±1/32  
ANGLES ±1°  
.XX ±.01  
.XXX ±.005

DO NOT SCALE DRAWING  
INTERPRET PER ASME Y14.5M-2009

REVISIONS						
ZONE	REV.	CR#	DESCRIPTION	REV BY	APPROVED	DATE

TITLE	NAME	DATE
DRAWN BY	FF	11/18/13
R&D	JP	10/29/13
MFG ENGR	DJ	10/28/13
QA	SW	10/28/13



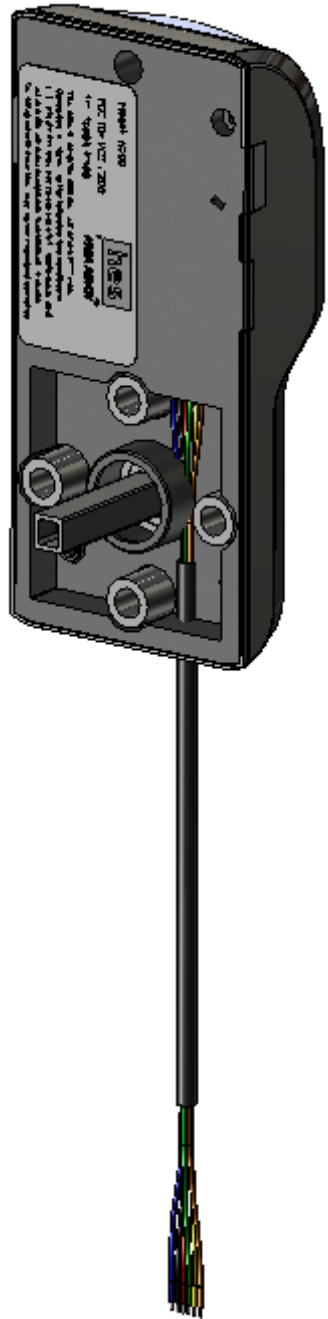
STATUS:  
**RELEASED**

	<b>HANCHETT ENTRY SYSTEMS, INC.</b> 10027 S. 51st Street, Suite 102 - Phoenix AZ 85044 P (623)582-4626 - F (623)582-4641 ASSA ABLOY, the global leader in door opening solutions
---	---

LABEL: FCC/IC/CE, K200

SIZE	DWG. NO.	REV.
<b>B</b>	XXXXXXX.XXX	<b>A</b>

SCALE: 2:1	PRINT DATE: 3/17/2014	LAST SAVED BY: ffigueroa	SHEET 1 OF 1
------------	--------------------------	-----------------------------	--------------



FAMILY NAME: