

Note: If the printed paper is blank, please check whether the paper roll has been installed in the correct direction.

TECHNICAL INDICATORS OF PRODUCTS

- Android 7.1
- Quad core 1.28GHz
- LTE/UMTS/GSM/WIFI 2.4&5G/Bluetooth
- 2GB RAM, 16GB ROM
- 5.0 inch HD
- Rear camera: 5M AF
- Bluetooth 4.2
- WiFi 802.11a/b/g/n (2.4G/5G)
- USB Type-C
- Battery 7.4V/2600mAh

ATTENTION

PRODUCT SAFETY WARNINGS

Use responsibly. Read all instructions and safety information before use to avoid injury. The limit operating ambient temperature of the equipment declared by the manufacturer is -15~55°C.

Battery Safety

Charge battery only at ambient temperatures ranging from 40°C.

(1) CAUTION: Danger of explosion if battery is incorrectly replaced. Replace only with the same or equivalent type of battery recommended by the manufacturer. Dispose of used batteries according to battery manufacturer's instructions.

(2) CAUTION: RISK OF EXPLOSION IF BATTERY IS REPLACED BY AN INCORRECT TYPE. DISPOSE OF USED BATTERIES ACCORDING TO THE INSTRUCTIONS.

(3) CAUTION: Battery charging temperature upper limit is 40°C.

Adapter Safety

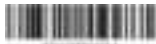
When charging, please place the device in an environment that has a normal room temperature and good ventilation. It is recommended to charge the device in an environment with a temperature that ranges from 0°C~40°C. For altitude 2km below use only.

Wi-Fi Safety

Turn Wi-Fi off in areas where Wi-Fi use is prohibited or when it may cause interference or danger, such as in airplanes while flying.

P3

Quick Guide



PRODUCT INTRODUCTION



Power button

Short Press: Light the screen, lock the screen.

Long press: In shutdown state, long press 2-3 seconds to turn on; When in use, press 2-3 seconds for a long time, and you can choose to turn off, turn on or screen capture.

In the crash state, press 10 seconds to restart automatically.

Volume button

Adjust the volume instantly by pressing the button.

NFC reader

Used for sensing Quick Pass Card.

Magnetic card reader

Used for reading the information stored in the magnetic stripe of bank card.

Type-C USB

Used for charging equipment.

Printer

Used for charging equipment.

Indicator lamp

Used for indicating the steps for swiping card and charging state.

Rear camera

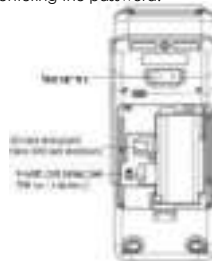
Supports photographing and 1D/2D code quick scanning.

IC Card socket

Used for inserting the bank chip card.

Key Pad

Used for entering the password.



SD card slot (up) and Nano SIM card slot(down)

Used for inserting the SIM Card and SD Card.

P-SAM card slot (up) and SIM card slot(down)

Used for inserting the P-SAM Card and SIM Card.



Printing instructions

This device supports 58mm thermal paper with the specifications of $57 \pm 0.5 \text{mm} \phi 40 \text{mm}$.

- ① Open the paper container;
- ② Feed the paper correctly into the paper container in the direction as shown, and pull some paper outside the cutter;
- ③ Close the cover of the paper container to finish printing paper feeding.

FCC RF EXPOSURE INFORMATION:

WARNING!! Read this information before using your Smart Terminals

In August 1986 the Federal Communications Commission (FCC) of the United States with its action in Report and Order FCC 96-326 adopted an updated safety standard for human exposure to radio frequency (RF) electromagnetic energy emitted by FCC regulated transmitters. Those guidelines are consistent with the safety standard previously set by both U.S. and international standards bodies. The design of this Smart Terminals complies with the FCC guidelines and these international standards. Use only the supplied or an approved antenna. Unauthorized antennas modifications, or attachments could impair call quality, damage the Smart Terminals, or result in violation of FCC regulations. Do not use the Smart Terminals with a damaged antenna. If a damaged antenna comes into contact with the skin, a minor burn may result. Please contact your local dealer for replacement antenna.

BODY-WORN OPERATION:

This device was tested for typical body-worn operations with the back/front of the phone kept 0cm from the body. To comply with FCC RF exposure requirements, a minimum separation distance of 0cm must be maintained between the user's body and the back/front of the phone, including the antenna. Third-party belt-clips, holsters and similar accessories containing metallic components shall not be used. Body-worn accessories

that cannot maintain 0cm separation distance between the user's body and the back/front of the phone and have not been tested for typical body-worn operations may not comply with FCC RF exposure limits and should be avoided.

For more information about RF exposure, please visit the FCC website at www.fcc.gov

Your Smart Terminals is a low power radio transmitter and receiver. When it is ON, it receives and also sends out radio frequency (RF) signals. In August, 1996, the Federal Communications Commission (FCC) adopted RF exposure guidelines with safety levels for hand-held wireless Smart Terminals. Those guidelines are consistent with the safety standards previously set by both U.S. and international standards bodies:

<ANSI C95.1> (1992) / <NCRP Report 86> (1986) / <ICNIRP> (1999)

Those standards were based on comprehensive and periodic evaluations of the relevant scientific literature. For example, over 120 scientists, engineers, and physicians from universities, government health agencies, and industry reviewed the available body of research to develop the ANSI Standard (C95.1). Nevertheless, we recommend that you use a hands-free kit with your Smart Terminals (such as an earpiece or headset) to avoid potential exposure to RF energy. The design of your Smart Terminals complies with the FCC guidelines (and those standards).

Use only the supplied or an approved replacement antenna. Unauthorized antennas, modifications, or attachments could damage the phone and may violate FCC regulations.

NORMAL POSITION:

Hold the phone as you would any other telephone with the antenna pointed up and over your shoulder.

RF Exposure Information:

This product is in compliance to FCC RF Exposure requirements and refers to FCC website <https://apps.fcc.gov/oetcf/eas/reports/GenericSearch.cfm> search for FCC ID: 2A2UU-P3 to gain further information include SAR Values.

NOTE: This equipment has been tested and found to comply with the limits for a Class B digital device, pursuant to part 15 of the FCC Rules. These limits are designed to provide reasonable protection against harmful interference in a residential installation. This equipment generates uses and can radiate radio frequency energy and, if not installed and used in accordance with the instructions, may cause harmful interference to radio communications. However, there is no guarantee that interference will not occur in a particular installation. If this equipment does cause harmful interference to radio or television reception, which can be determined by turning the equipment off and on, the user is encouraged to try to correct the interference by one or more of the following measures:

- Reorient or relocate the receiving antenna.
- Increase the separation between the equipment and receiver.
- Connect the equipment into an outlet on a circuit different from that to which the receiver is connected.
- Consult the dealer or an experienced radio/TV technician for help

Changes or modifications not expressly approved by the party responsible for compliance could void the user's authority to operate the equipment.

This device complies with Part 15 of the FCC Rules. Operation is subject to the following two conditions:

- (1) this device may not cause harmful interference, and
- (2) this device must accept any interference received, including interference that may cause undesired operation.

This device is acting as slave and operating in the 2.4 GHz (2412 ~2462 MHz) band. Ad Hoc function is supported but not able to operate on non-US frequencies.