
ATTACHMENT E.

- USER'S MANUAL -

Foreword

■ Caution	3
■ Important Safety Instructions	4
■ Precaution	5

Overviewing the Monitor

■ Viewing the Control Panel	9
■ Viewing the Connecting Panel	10
■ Viewing the Remote Control	
- Button Description	12
- PIP (Picture in Picture) Buttons	13
- Loading the Batteries.....	15

Installation

■ Table Stand Installation	16
■ Speaker Installation	17

Connecting the Cable/Devices

■ Connecting the TV Cable	18
■ Connecting the VCR	19
■ Connecting the DVD	20
■ Connecting the Set Top Box	21
■ Connecting the PC [D-Sub & DVI]	22
- Displayable Monitor Specification.....	23

Setting the Channel

■ Basic Operation.....	24
■ OSD Menu Structure	25
■ Choosing the Channel Type.....	26
■ Storing the Channel Automatically	26
■ Fine Tuning the Channel Reception	27
■ Setting the Favorite Channel	28

Setting the Picture

■ Changing the Picture Mode	29
- Adjust User Mode	30
■ Changing the Color Temperature	32
■ Video NR (Noise Reduction)	32
■ Selecting the Film Mode.....	33
■ Changing the Screen Form	33

Contents

■ Setting the Black Enhancer	34
■ Adjusting the PC Screen (Geometry)	35
- Native Mode	36

Setting the Sound

■ Adjusting the Sound Balance	37
■ Changing the Sound Mode	37
■ Adjusting the User Sound Mode	38
■ Spatial Effect	38
■ AVC (Auto Volume Control)	38
■ MTS (Multichannel Television Sound)	39

Setting the Others

■ Adjusting the Transparency of the OSD Window	40
■ PIP (Picture in Picture)	40
- Changing the Size in PIP	40
- Choosing the Source in PIP	41
- Picture Swap in PIP	41
- Changing the Position in PIP	42
■ Other Advanced Function	42
- Set ID	43
- Setting the Blue Screen Mode	43
- Changing the OSD Language	43
- Front Key Lock in Advance	43
■ V-chip (TV Parental Guidelines)	44
- TV Blocking in V-Chip	45
- Movie Blocking in V-Chip	45
- Change Password in V-Chip	46
- V-Chip Blocking in V-Chip	46


Setting the Time

■ Setting the Current Time	47
■ Setting the On Time	47
■ Setting the On Channel	48
■ Setting the On Volume	48
■ Setting the Off Time	49
■ Setting the Sleep Timer	49

<u>Troubleshooting</u>	50
-------------------------------------	----


<u>Warranty Card</u>	51
-----------------------------------	----

Caution



CAUTION

RISK OF ELECTRIC SHOCK
DO NOT OPEN



CAUTION : TO REDUCE THE RISK OF ELECTRIC SHOCK, DO NOT REMOVE COVER (OR BACK), NO USER-SERVICEABLE PARTS INSIDE. REFER SERVICING TO QUALIFIED SERVICE PERSONNEL.



This symbol is intended to alert the user to the presence of uninsulated "dangerous voltage" within the product's enclosure that may be of sufficient magnitude to constitute a risk of electric shock to persons.



This symbol is intended to alert the user to the presence of important operating and maintenance(servicing) instructions in the literature accompanying the appliance.

CAUTION

- TO PREVENT DAMAGE WHICH MAY RESULT IN FIRE OR SHOCK HAZARD.
- DO NOT EXPOSE THIS APPLIANCE TO RAIN OR MOISTURE.
- SHOCK HAZARD DO NOT OPEN.

CAUTION

These servicing instructions are for use by qualified service personnel only. To reduce the risk of electric shock, do not perform any servicing other than that contained in the operating instructions unless you are qualified to do so.

CAUTION

The stand is intended for use with this monitor only. Use with other products may result in injury.

WARNING

- Apparatus shall not be exposed to dripping or splashing and no objects filled with liquids, such as vases, shall be placed on the apparatus.
- This is Class B product. In a domestic environment this product may cause radio interference in which case the user may be required to take adequate measures.
- To reduce the risk of fire and electric shock, do not expose this product to rain or moisture.

FCC NOTICE

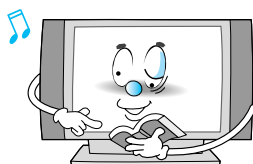
This device has been tested and found to comply with the limits for a Class B device, pursuant to Part 15 of the FCC Rules. These limits are designed to provide reasonable protection against harmful interference in home environment as well as in a commercial, industrial or business environment. This equipment can generate, use and radiate radio frequency energy and, if not installed and used in accordance with the instruction, may cause harmful interference to radio communications. However, there is no guarantee that interference will not occur in a particular installation. If this equipment does cause harmful interference to radio or television reception, which can be determined by turning the equipment off and on, the user is encouraged to try to correct the interference by one or more of the following measures :

- Reorient or relocate the receiving antenna.
- Increase the separation between the equipment and receiver.
- Connect the equipment into an outlet on a circuit different from that to which the receiver is connected.
- Consult the dealer or an experienced radio/TV technician for help.

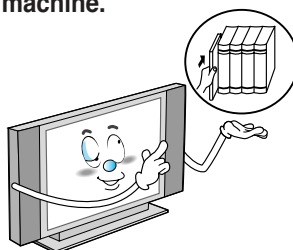
Changes or modification not expressly approved by the party responsible for compliance could void the user's authority to operate the equipment.

Connecting of peripherals requires the use of grounded shielded signal cables.

- **Always be careful when using your the monitor. To reduce the risk of fire, electrical shock, and other injuries, keep these safety precautions in mind when installing, using, and maintaining your machine.**



Read all safety and operating instructions before operating your the monitor.



Keep the safety and operating instructions for future reference.



Heed all warnings on the monitor and in the operating instructions.

Important Safety Instructions

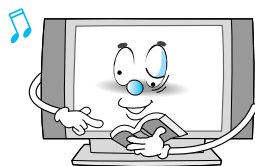
Always be careful when using your the monitor. To reduce the risk of fire, electrical shock, and other injuries, keep these safety precautions in mind when installing, using, and maintaining your machine.

1. Read these instructions.
2. Keep these instructions.
3. Heed all warnings.
4. Follow all instructions.
5. Do not use this apparatus near water.
6. Clean only with a damp cloth.
7. Do not block any of the ventilation openings. Install in accordance with the manufacturer's instructions.
8. Do not install near any heat sources such as radiators, heat registers, stoves, or other apparatus (including amplifiers) that produce heat.
9. Do not defeat the safety purpose of the polarized or grounding type plug. A polarized plug has two blades with one wider than the other. A grounding type plug has two blades and a third grounding prong. The wide blade or the third prong is provided for your safety. When the provided plug does not fit into your outlet, consult an electrician for replacement of the obsolete outlet.
10. Protect the power cord from being walked on or pinched particularly at plugs, convenience receptacles, and the point where they exit from the apparatus.
11. Only use the attachments/accessories specified by the manufacturer.
12. Use only with a cart, stand, tripod, bracket, or table specified by the manufacturer, or sold with the apparatus. When a cart is used, use caution when moving the cart/apparatus combination to avoid injury from tip-over.

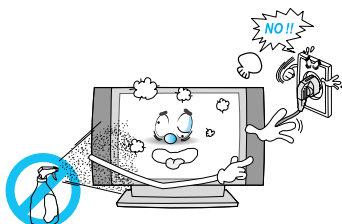


13. Unplug this apparatus during lightning storms or when unused for long periods of time.
14. Refer all servicing to qualified service personnel. Servicing is required when the apparatus has been damaged in any way, such as power supply cord or plug is damaged, liquid has been spilled or objects have fallen into the apparatus, the apparatus has been exposed to rain or moisture, does not operate normally, or has been dropped.

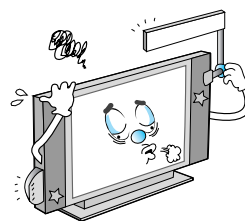
Precaution



Follow all operating and use instructions.



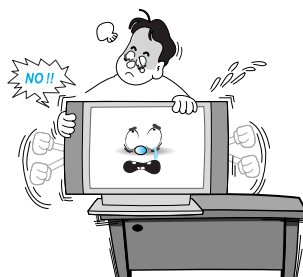
Unplug the monitor from the wall outlet before cleaning. Use a damp cloth; do not use liquid or aerosol cleaners.



Never add any attachments and/or equipment without approval of the manufacturer. Such additions can increase the risk of fire, electric shock, or other personal injury.



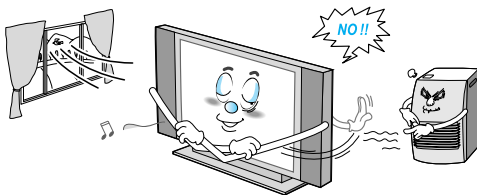
Do not use the monitor where contact with or immersion in water is a possibility, such as near bath tubs, sinks, washing machines, swimming pools, etc.



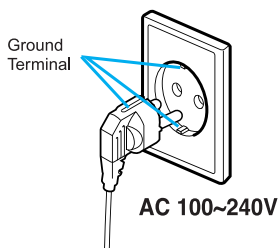
When installing the monitor on a table, be careful not to place it too close to the edge of the table.

- This may cause the monitor to fall, causing serious injury to a child or adult, and serious damage to the monitor.

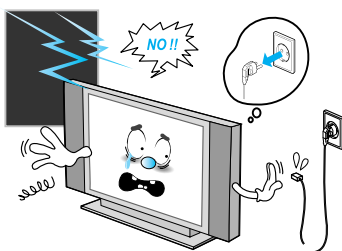
Precaution



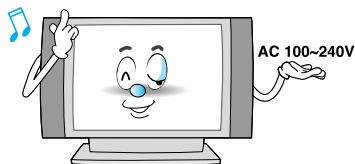
Provide ventilation for the monitor. The unit is designed with slots in the cabinet for ventilation to protect it from overheating. Do not block these openings with any object, and do not place the monitor on a bed, sofa, rug or other similar surface. Do not place it near a radiator or heat register. If you place the monitor on a rack or bookcase, ensure that there is adequate ventilation and that you've followed the manufacturer's instructions for mounting.



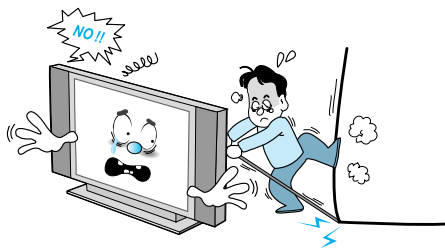
Use only a grounded or polarized outlet. For your safety, this Monitor is equipped with a polarized alternating current line plug having one blade wider than the other. This plug will fit into the power outlet only one way. If you are unable to insert the plug fully into the outlet, try reversing the plug. If the plug still does not fit, contact your electrician to replace your outlet.



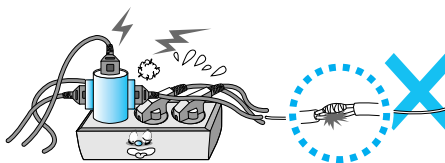
Unplug the monitor from the wall outlet and disconnect the antenna or cable system during a lightning storm or when left unattended and unused for long periods of time. This will prevent damage to the unit due to lightning and power-line surges.



Use only the accessory cord designed for this product to prevent shock. The power supply voltage rating of this product is AC100-240V, the power cord attached conforms to the following power supply voltage. Use only the power cord designated by our dealer to ensure Safety and EMC. When it is used by other power supply voltage, power cable must be changed. Consult your product dealer.

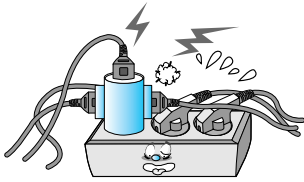


Avoid overhead power lines. An outside antenna system should not be placed in the vicinity of overhead power lines or other electric light or power circuits or where it can fall into such power lines or circuits. When installing an outside antenna system, be extremely careful to keep from touching the power lines or circuits. Contact with such lines can be fatal.

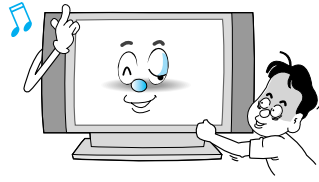


Protect the power cord. Power supply cords should be routed so that they won't be walked on or pinched by objects placed on or against them. Pay particular attention to cords at plugs, convenience receptacles, and the point where they exit from the unit.

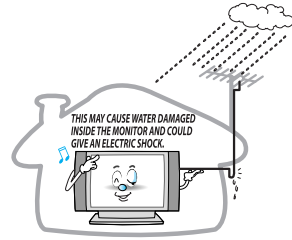
Precaution



Do not overload the wall outlet or extension cords. Overloading can result in fire or electric shock.



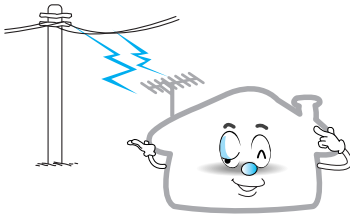
Do not insert anything through the openings in the unit, where they can touch dangerous voltage points or damage parts. Never spill liquid of any kind on the monitor.



Bend antenna cable between inside and outside building to prevent rain from flowing in.

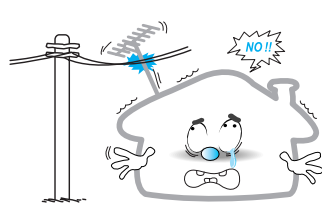
- This may cause water damaged inside the monitor and could give an electric shock.

Ground outdoor antennas. If an outside antenna or cable system is connected to the monitor, be sure the antenna or cable system is grounded so as to provide some protection against voltage surges and built-up static charges. Section 810 of the National Electrical Code, ANSI/NFPA No.70-1984, provides information about proper grounding of the mast and supporting structure, grounding of the lead-in wire to an antenna discharge unit, size of grounding conductors, location of antenna discharge unit, connection to grounding electrodes, and requirements for the grounding electrode.



Do not place an outside antenna in the vicinity of overhead power lines or other electric light or power circuits.

- This may cause an electric shock.



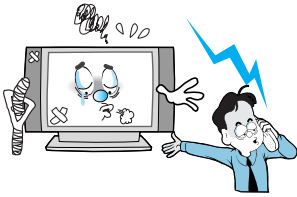
There should be enough distance between an outside antenna and power lines to keep the former from touching the latter even when the antenna falls.

- This may cause an electric shock.

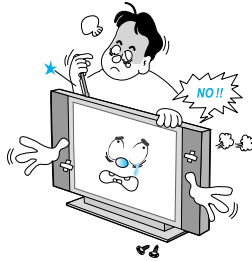
Do not attempt to service the monitor yourself. Refer all servicing to qualified service personnel. Unplug the unit from the wall outlet and refer servicing to qualified service personnel under the following conditions:

- When the power-supply cord or plug is damaged
- If liquid has been spilled on the unit or if objects have fallen into the unit
- If the monitor has been exposed to rain or water
- If the monitor does not operate normally by following the operating instructions
- If the monitor has been dropped or the cabinet has been damaged
- When the monitor exhibits a distinct change in performance

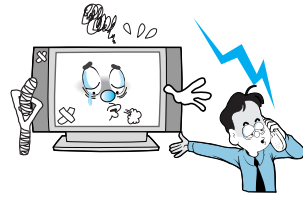
Precaution



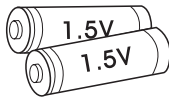
When replacement parts are required, be sure the service technician uses replacement parts specified by the manufacturer or those that have the same characteristics as the original part. Unauthorized substitutions may result in additional damage to the unit.



Upon completion of any service or repairs to this the monitor, ask the service technician to perform safety checks to determine that the monitor is in a safe operating condition.

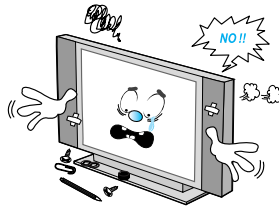


If you make adjustments yourself, adjust only those controls that are covered by the operating instructions. Adjusting other controls may result in damage and will often require extensive work by a qualified technician to restore the monitor to normal.



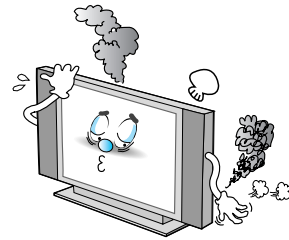
Only use the specified batteries.

- This may cause damage to the monitor or could give an electric shock.



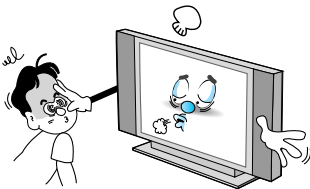
Do not place anything containing liquid on top of the monitor.

- This may cause a fire or could give an electric shock.



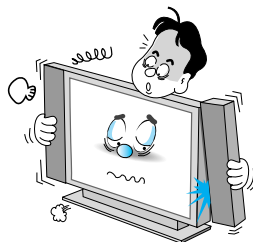
In case of smoke or strange smell from the monitor, switch it off, unplug it from the wall outlet and contact your dealer or service center.

- This may cause a fire or could give an electric shock.



The viewing distance should be about 5~7 times as long as diagonal length of the screen.

- If not, eyes will strain.



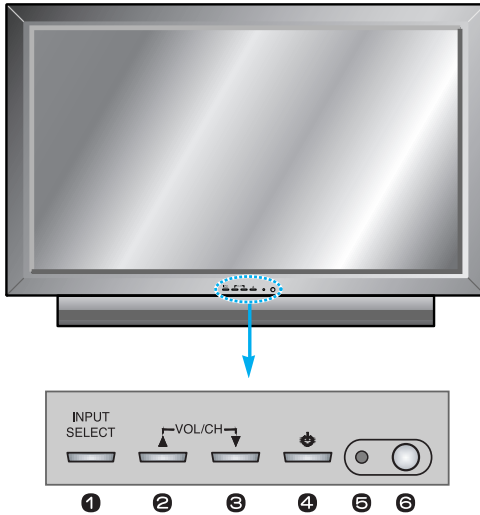
When moving the monitor assembled with speakers do not carry holding the speakers.

- This may cause the monitor to fall, causing serious injury to a child or adult, and serious damage to the monitor.

Viewing the Control Panel

OSD Button Position

Front Panel



OSD Button & Function

- ❶ Input Source Select
- ❷ Up (See the box below)
- ❸ Down (See the box below)
- ❹ Stand by
- ❺ Remote Sensor
- ❻ Status/Power Indicator LED

OSD Button Function

❶ INPUT SELECT

Select the signal source from multiple input sources such as TV, AV 1, AV 2, S-Video/AV 3, Component 1, Component 2, PC and DVI.

❷ VOL/CH▲/▼

To change the **CHANNEL**, press ▲ button first and change the channel with ▲, ▼ buttons.

To change the **VOLUME**, press ▼ button first and change the volume with ▲, ▼ buttons.

❹ Stand by ON/OFF

Turn the monitor on and off.

Accessories



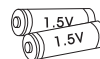
Remote Control Handset



Power Cord



RF Cable



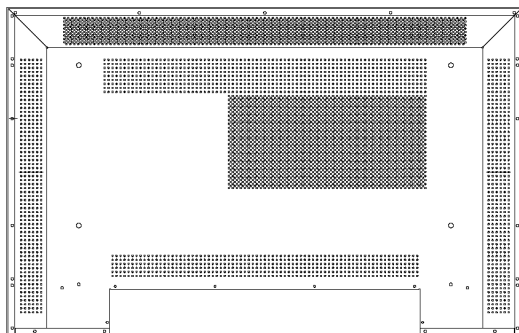
Alkaline Batteries



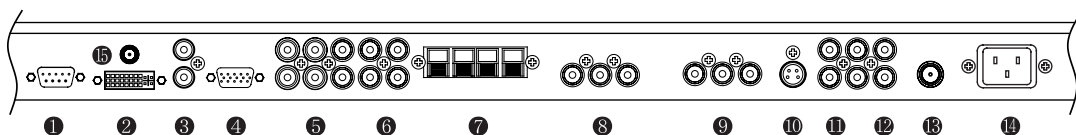
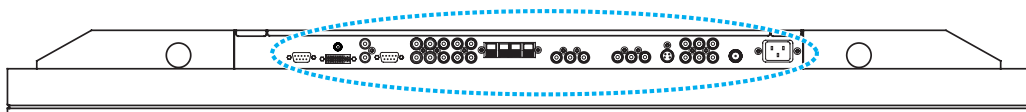
Owner's Manual

Viewing the Connecting Panel

Back Panel and Jacks



< Back panel of the monitor >



①	RS-232C	To Control from PC
②	DVI	For PC, Set Top Box
③	D-Sub(PC), DVI Sound	PC/DVI Audio Input
④	D-Sub (PC)	For PC, Set Top Box
⑤	Component 1, 2	For DVD, Set Top Box
⑥	Component Sound	For Component Audio Input
⑦	Speakers	To Connect Speakers (2CH, Stereo)
⑧	AV 1	For VCR, DVD, Set Top Box
⑨	AV 2	For VCR, DVD, Set Top Box
⑩	S-Video	For DVD, Set Top Box, S-VHS
⑪	AV Output	To Connect other TV or Monitor
⑫	AV 3	For VCR, DVD, Set Top Box
⑬	TV Antenna	For TV Antenna Cable (Air)
⑭	AC Power	
⑮	DC 5V Output	

• Refer to the next page for port descriptions.

Viewing the Connecting Panel

- ❶ **RS-232C Jack**
Connects a control signal from a PC.
- ❷ **DVI Input Jack**
Connects a digital video signal from a DVI output jack of PC or set top box.
- ❸ **D-Sub(PC), DVI Sound**
Connects a sound signal from PC or DVI.
- ❹ **RGB PC Input Jack (D-Sub)**
Connects a video signal from a video output jack of PC.
Cables connecting the PC vary according to the type of machine, so contact your product dealer.
- ❺ **Component Input Jack 1, 2**
Connects a three separate component video signal from a component output jack of a DVD player or set top box.
Supports 480i/p(60Hz), 576i/p(50Hz), 720p(50/60Hz), 1080i(50/60Hz) signals. (i: interlace, p: progressive)
- ❻ **Component Sound**
Connects a sound signal from component.
- ❼ **Speaker Jack**
Connects external speakers by wires. Match red/red and black/black of speaker/TV.
- ❽ ❹ **Composite (RCA) Input Jack 1, 2**
Connects an AV composite video signal from a composite output terminal of a VCR or DVD player.
- ❿ **S-Video Input Jack**
Connects a S-Video video signals from a S-Video output jack of a S-VHS, VCR or DVD player.
- ⓫ **(Upper). Composite (RCA) Output Jack**
Output the signal of the current screen of the monitor. Connects to other TV or monitor.
- ⓬ **(Lower). Composite (RCA) Input Jack 3**
Connects an AV composite video signal from a composite output terminal of a VCR or DVD player.
Unavailable when a S-Video cable is put into the S-Video input jack.
- ⓭ **ANT. IN (TV Antenna Jack)**
Connects to an TV antenna cable.
- ⓮ **AC(Power) Input Terminal**
Firmly insert the accessory power cord as far as it will go into the power input terminal.
Firmly push the power cord plug as far as it will go into the power socket.

Connectors	
Audio Input	RCA Pin Jack
Composite Video Input	RCA Pin Jack
Composite Video Output	RCA Pin Jack
S-Video Input	Mini Din 4Pin
Component Video Input	RCA Pin Jack
Analog RGB Input	Mini D-Sub 15Pin
Digital Video Input	DVI-D 24Pin

- Cables connecting the PC vary according to the type of machine, so consult your product dealer.

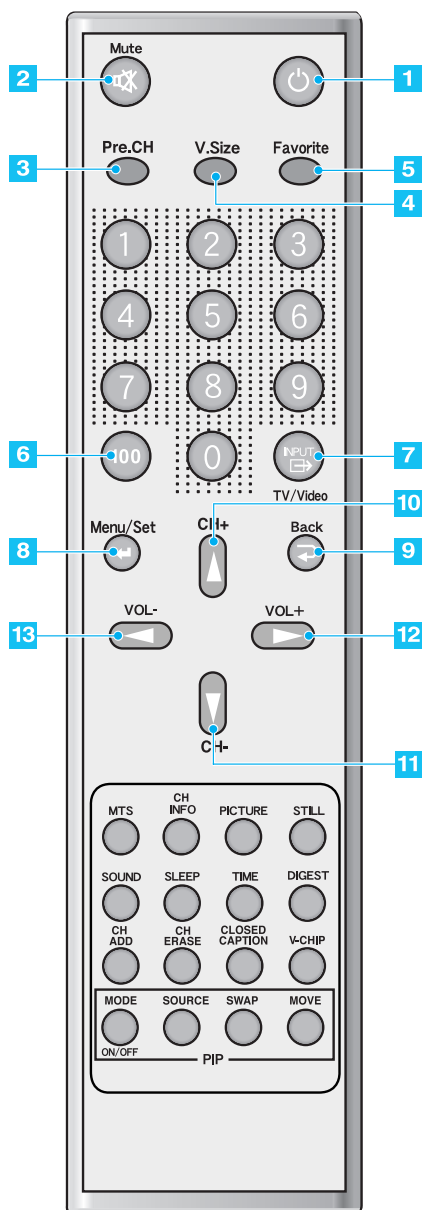
RS-232C Configurations

3-Wire (Non-Standard) PC Monitor

RXD	2	3	TXD
TXD	3	2	RXD
GND	5	5	GND
DTR	4	4	DTR
DSR	6	6	DSR
RTS	7	7	RTS
CTS	8	8	CTS

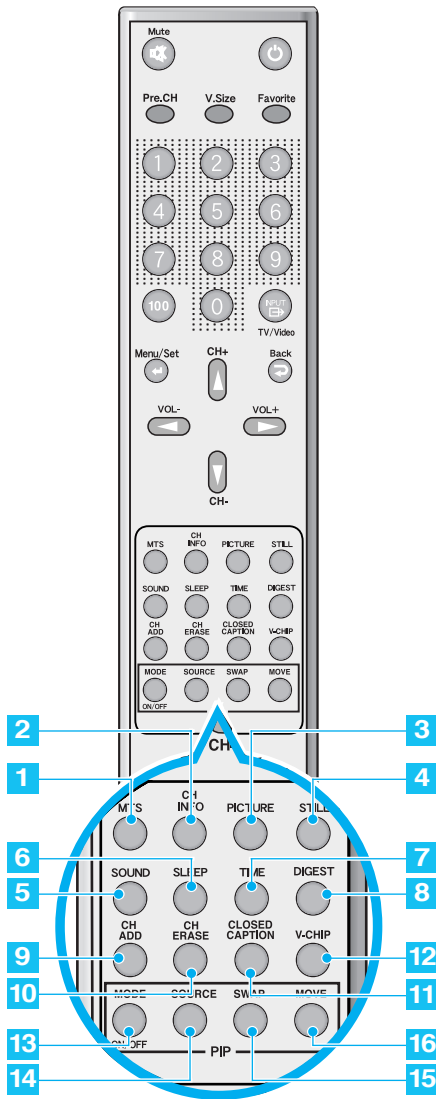
Viewing the Remote Control

► Button Description



- 1 Stand by**
Turn the monitor on and off.
- 2 Mute**
Temporarily cut the sound and restore it.
- 3 Pre.CH**
Turn to the previous channel or exit OSD.
- 4 V.Size**
Choose the screen form.
16:9 → Panorama → Zoom1 → Zoom2 → 4:3
- 5 Favorite**
Tune to your next favorite channel.
- 6 100**
Press to tune the channels over 100.
- 7 INPUT**
Display the input source list.
- 8 Menu/Set**
Display the main OSD menu.
Activate your choice in the OSD menu.
- 9 Back**
Return to the previous OSD menu.
- 10 CH+**
Move to the upper channel.
- 11 CH-**
Move to the lower channel.
- 12 VOL+**
Increase the volume level.
- 13 VOL-**
Decrease the volume level.

Viewing the Remote Control

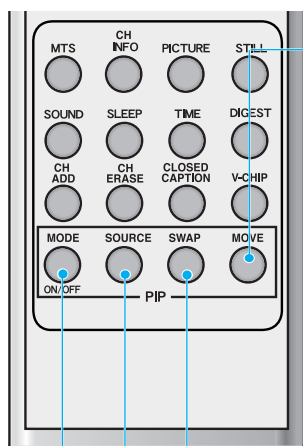


▶ PIP (Picture in Picture) Buttons

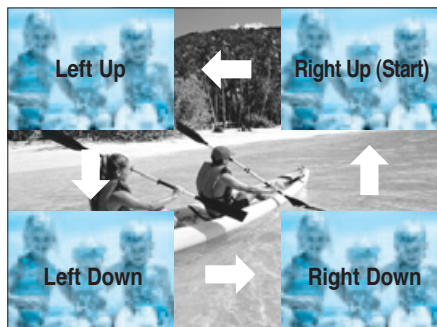
- 13 MODE (ON/OFF)**
Activate PIP function and change the PIP window size and PIP mode.
Small → Large → Twin (Half) → OFF
- 14 SOURCE**
Change the PIP window source.
- 15 SWAP**
Swap the main screen and the PIP window.
- 16 MOVE**
Move the position of the PIP window.

- 1 MTS**
Choose the MTS (Stereo) mode. Each time it is pressed, different mode is selected.
Mono → Stereo → SAP
• You can select only available modes depending on the source.
- 2 CH INFO**
Display the current information about time, screen form, source and MTS mode.
- 3 PICTURE**
There are 4 picture modes.
Standard → Vivid → Mild → User
- 4 STILL**
Temporarily freeze the screen and restore it.
- 5 SOUND**
Choose the sound equalizer settings.
Standard → Movie → Music → News → User
- 6 SLEEP**
Set the preset time interval for automatic turn-off.
OFF → 10 → 20 → 30 → 60 → 90 → 120 → 150 → 180
- 7 TIME**
Display the current time on the screen.
- 8 DIGEST**
Display 15 TV programs at the same time.
- 9 CH ADD**
Add the current channel to memory.
- 10 CH ERASE**
Erase the current channel from memory.
- 11 CLOSED CAPTION**
Set the close caption.
OFF → Closed Caption1 → Closed Caption2 → Text1 → Text2
- 12 V-CHIP**
Get into V-Chip menu.

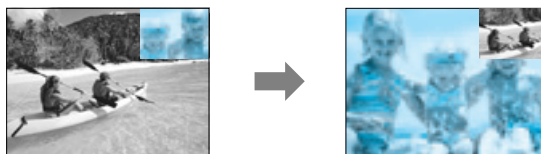
Viewing the Remote Control



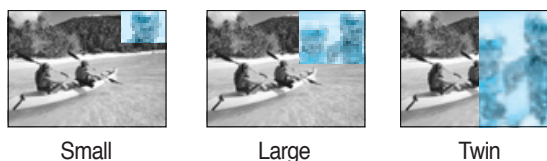
MOVE button : Move the position of PIP window.



SWAP button : Swap the sources of the main screen and PIP window.



MODE button : Change the PIP window mode.
OFF → Small → Large → Twin



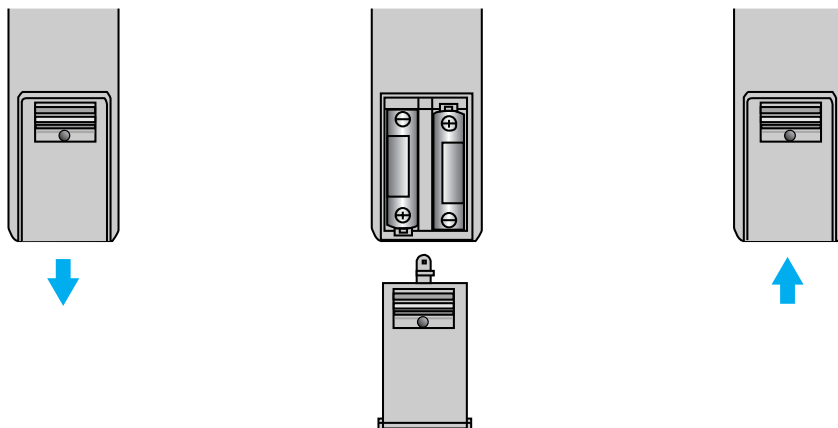
SOURCE button : Change the source of the PIP window. The available sources are shown as below.

PIP	Main	TV	AV 1	AV 2	S-Video/AV 3	Component 1	Component 2	PC	DVI
TV		✓	✓	✓	✓	✓	✓	✓	✓
AV 1		✓	—	✓	✓	✓	✓	✓	✓
AV 2		✓	✓	—	✓	✓	✓	✓	✓
S-Video/AV 3		✓	✓	✓	—	✓	✓	✓	✓
Component 1		✓	✓	✓	✓	—	—	—	—
Component 2		✓	✓	✓	✓	—	—	—	—
PC		✓	✓	✓	✓	—	—	—	—
DVI		✓	✓	✓	✓	—	—	—	—

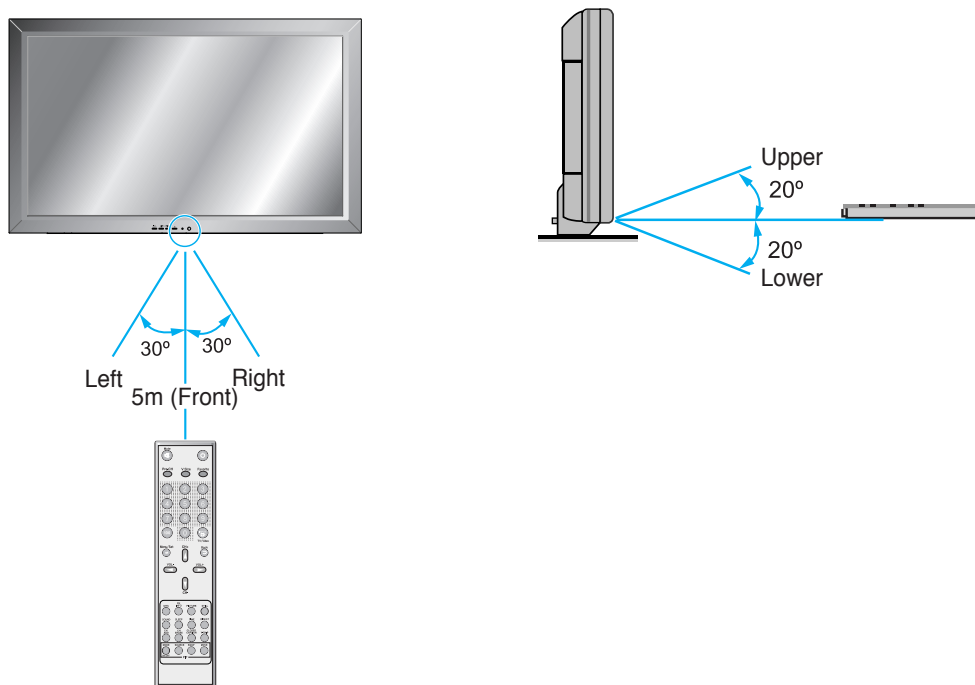
Viewing the Remote Control

Loading the Batteries

- 1 Press on the cover and slide in the direction of the arrow.
- 2 Load two AAA batteries, taking care that the + and - ends face the correct direction.
- 3 Close the cover until it clicks.



Reception Range of Remote Control



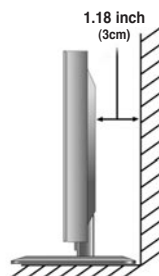
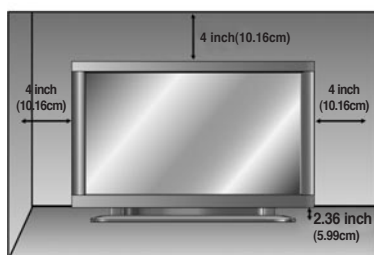
Installation

Table Stand Installation (Optional)



< The monitor can be installed on the desk as shown above. >

- Table stand mount minimum allowable clearances for adequate ventilation.

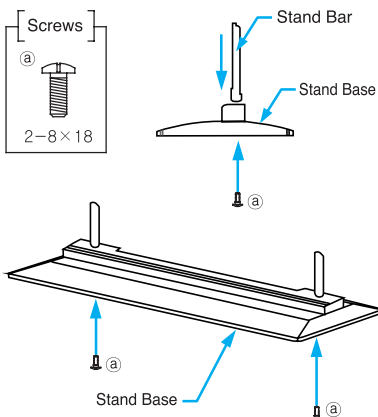


Installation

Table-Stand User's Guide

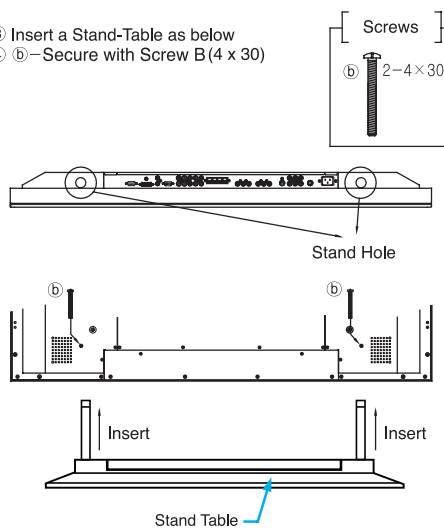
- ① Insert Stand Bars into the Stand Base as shown below

- ② ①-- Secure with Screw A (8 x 18)



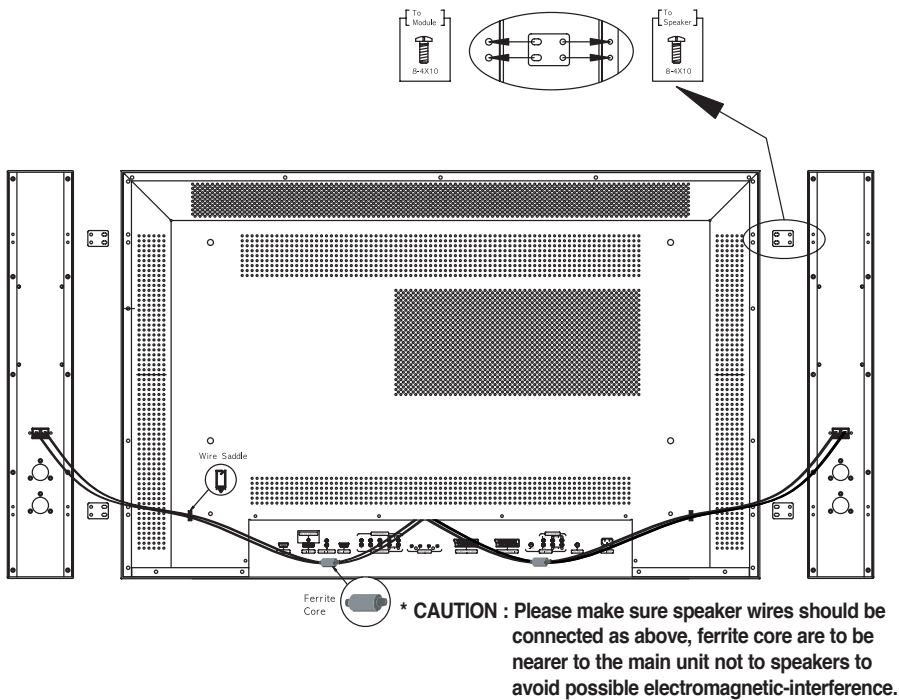
- ③ Insert a Stand-Table as below

- ④ ②-- Secure with Screw B (4 x 30)



Installation

Speaker Installation (Optional)



Caution

- **Be sure monitor power is turned off before making any connections.**
Place the speakers in the position you want. Install the speaker wires on the monitor and speaker. Be sure to connect the positive "+" wire to the "+" input and the negative "-" wire to the "-" input. Connect left monitor input to left speaker and right monitor input to right speaker. Any extra speaker wire length remaining can be bunched into the wire holders provided. (Caution: Once installed, the speaker wire holders lock into position and can't be removed.)
- **Always lift the monitor itself (not the speakers) when handling or moving the monitor after speakers have been installed.**

Speaker Accessories



4 - Iron Plates
(Mount speakers to monitor)



16 - 4 x 10 Long Bolts
(Attach iron plates to speakers)

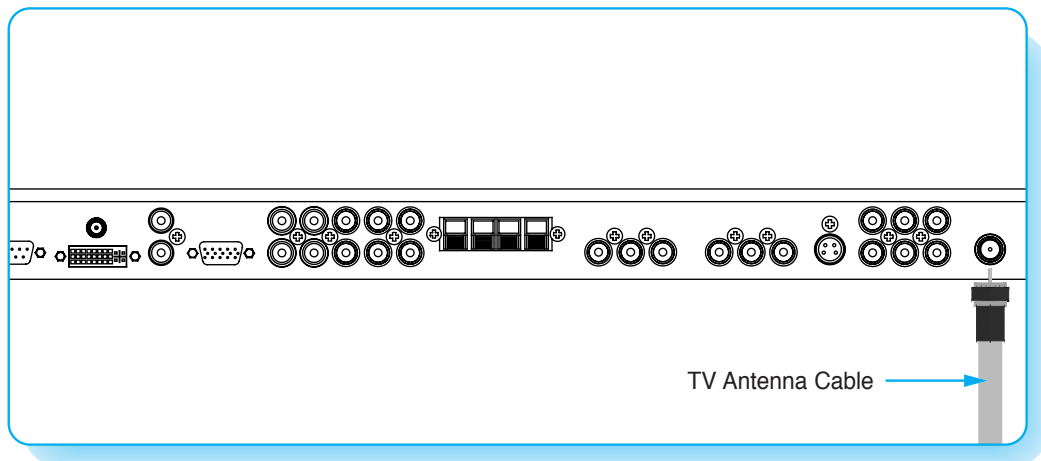


2 - Speaker Wire Holders
(For arranging the speaker wires)



2 - Speaker Wires

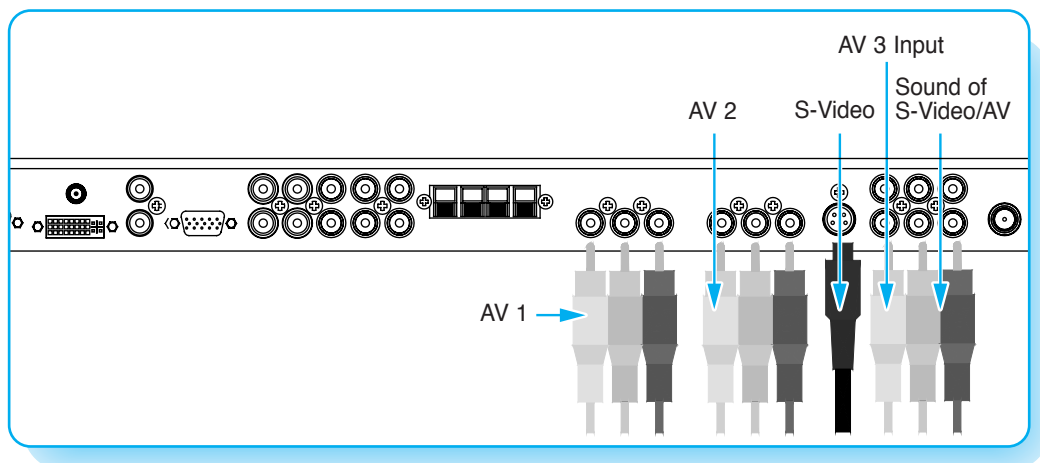
Connecting the TV Cable



Connecting the TV Cable

- 1 Connect the TV antenna cable to the TV input jack. Press INPUT button on the remote control and select TV on OSD.
- 2 Use CH+/CH- button or numeric button to change TV channel for your channel selection.
- 3 Press Pre.CH button on the remote control to tune the previous channel.
- 4 Also, you can tune to cable service provided channels using the cable box. For further information regarding cable TV service, contact cable TV service provider(s).

Connecting the VCR



Connecting the VCR

With S-Video

Connect a S-Video cable to the S-Video jacks of the VCR and the monitor.

Connect L (White), R (Red) sound cable (Composite) to the sound jacks of the VCR and the monitor.

With AV Input

Connect a composite cable to the AV video jacks of the VCR and the monitor.

Connect L (White), R (Red) sound cable (Composite) to the sound jacks of the VCR and the monitor.

Watching VCR

- 1 Press INPUT button on the remote control and select video sources.
- 2 Insert a video tape into the VCR and press the PLAY button on the VCR.



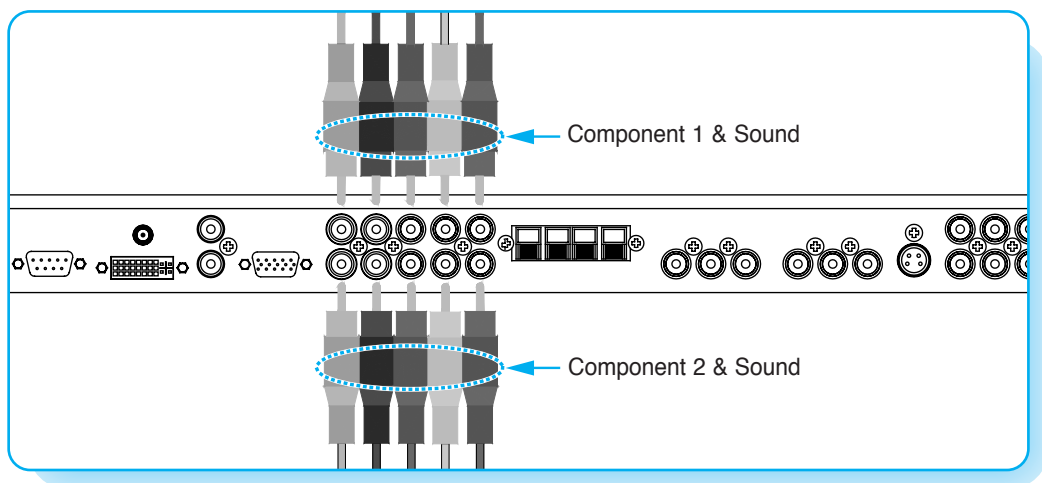
Notes

- **To avoid picture noise** (interference), leave an adequate distance(over 3m) between the VCR and monitor.
- When connecting the monitor with external equipment, match the color of connecting ports (e.g. Video - Yellow, Audio(L) - White, Audio(R) - Red).
- If you have a mono VCR, connect the audio cable from the VCR to the Audio(L/Mono) input of the monitor.
- If you connect an S-VHS VCR to the S-Video input socket, you can get a better picture quality than normal video input (AV).

Connecting the DVD

Connecting the DVD

- Connect the three separate component video cables to the DVD player's Y, Pb and Pr jacks and to the Component jacks on the monitor.
- Connect the audio cable to the DVD player's audio L (White) and R (Red) jacks and to the L and R audio jacks beside the Component jacks on the monitor.



How to Use

- 1 Turn on the DVD player.
- 2 Press INPUT button on the remote control of the monitor and select Component 1 or Component 2.

Component Input Ports

You can get better picture quality if you connect DVD player with component input sockets as below.



Notice

- Normal DVD source is based on 480i, which should be through normal YPbPr of component signal.

Supported Signals for Component Ports

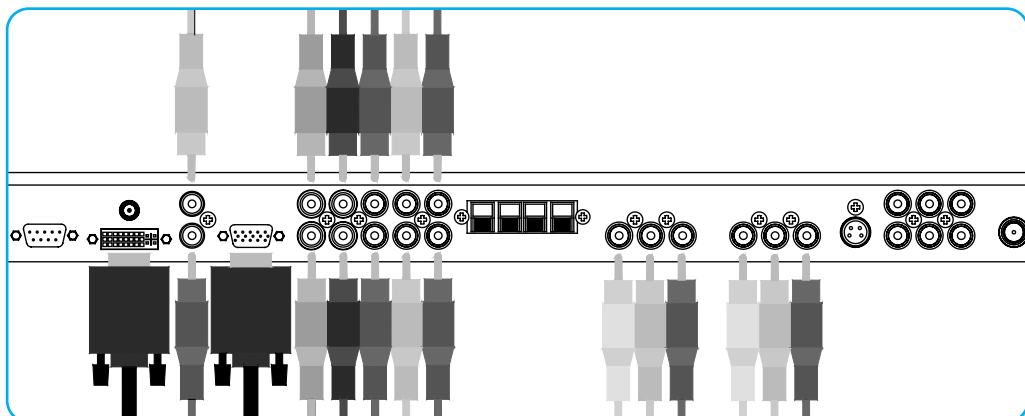
	Component 1	Component 2
480i/60Hz	✓	✓
480p/60Hz	✓	✓
576i/50Hz	✓	✓
576p/50Hz	✓	✓
720p/50Hz	✓	✓
720p/60Hz	✓	✓
1080i/50Hz	✓	✓
1080i/60Hz	✓	✓

Component ports of the monitor	Y	P _B	P _R
Video output ports of DVD player	Y Y Y	P _b B-Y Cb P _b	P _r R-Y Cr P _r

Connecting the Set Top Box

How to Connect

Connect Set Top Box (STB) video inputs to AV, Component, PC or DVI jacks on the monitor.
Audio inputs to audio sockets beside the **L** (White) and **R** (Red) audio jacks which you connect video inputs.



How to Use

- 1 Turn on the set top box.
- 2 Press INPUT button on the remote control of the monitor and select Component 1, Component 2, PC or DVI.

Supported Signals

	Component 1	Component 2	PC	DVI
480i/60Hz	✓	✓	—	—
480p/60Hz	✓	✓	✓	✓
576i/50Hz	✓	✓	—	—
576p/50Hz	✓	✓	✓	✓
720p/50Hz	✓	✓	✓	✓
720p/60Hz	✓	✓	✓	✓
1080i/50Hz	✓	✓	✓	✓
1080i/60Hz	✓	✓	✓	✓

How to Connect

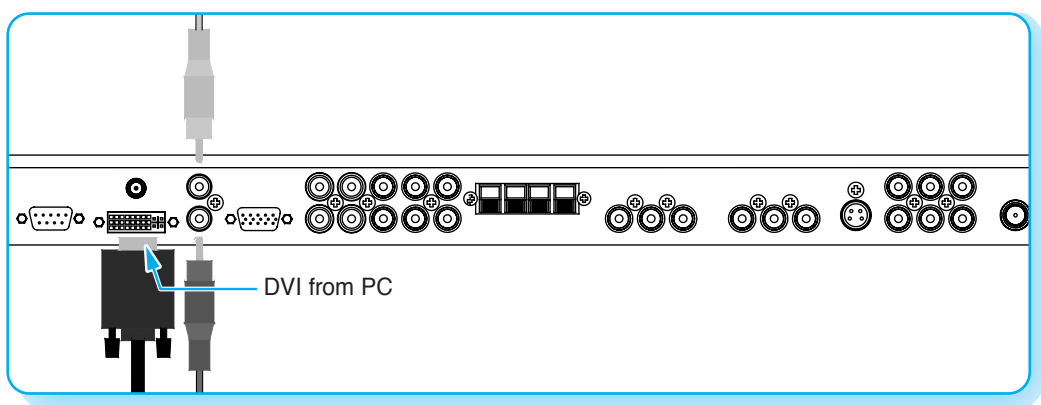
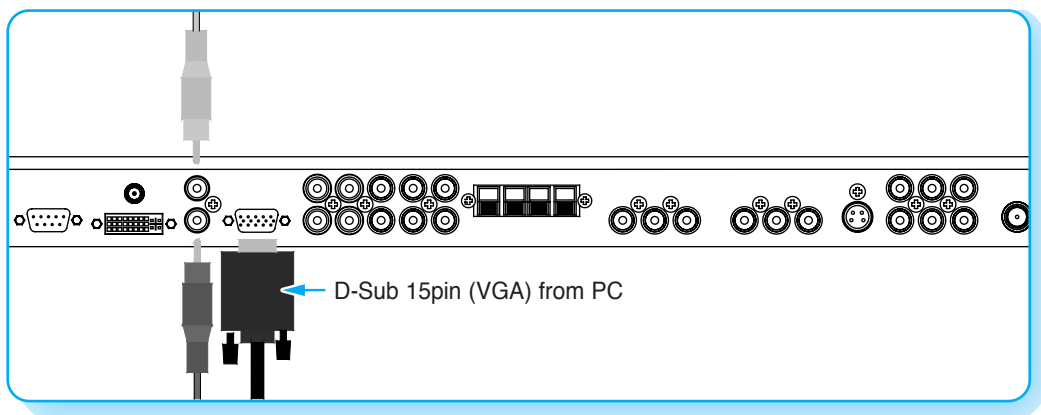
With Component

Connect a three separate component cables to the component jacks of the STB and the monitor.
Connect L (White) and R (Red) sound cables (Composite) to the sound jacks of the STB and the monitor.

With RGB(D-Sub) or DVI

Connect a D-Sub or DVI cable to the AV video jacks of the STB and the monitor.
Connect L (White) and R (Red) sound cables (Composite) to the sound jacks of the STB and the monitor.

Connecting the PC [D-Sub & DVI]



▶ Connecting a PC to the monitor

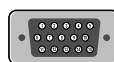
- There are two connectors to connect the monitor and PC: D-Sub and DVI.
- D-Sub
Connect a PC (15pin) video cable between the video output port on the PC and the PC port on the monitor.
- DVI
Connect a DVI-D cable between the DVI output port on the PC and the DVI port on the monitor.

▶ Pin Configuration

15pin signal cable (based on protruded pin)

▶ To watch the PC screen

- 1 Turn on the monitor and press INPUT button to select the PC mode.
- 2 Turn on the PC and check for the PC requirements.
- 3 Adjust the PC screen in Geometry menu.
(See 35 page.)



Pin No.	Description
1	Red (R)
2	Green (G)
3	Blue (B)
4	Grounding
5	Grounding (DDC)
6	Red (R) Grounding
7	Green (G) Grounding
8	Blue (B) Grounding
9	Reserved
10	Sync Grounding
11	Grounding
12	Data (DDC)
13	Horizontal sync.
14	Vertical sync.
15	Clock (DDC)

Displayable Monitor Specification

Resolution	Horizontal Frequency (KHz)	Vertical Frequency (Hz)
640 x 350	31.468	70.09
	37.861	85.08
640 x 400	31.469	70.08
	37.927	85.03
640 x 480	31.469	59.94
	35.000	66.66
	37.861	72.80
	37.500	75.00
	43.269	85.00
	45.913	90.03
	53.011	100.04
	64.062	120.000
800 x 600	35.156	56.25
	37.879	60.31
	48.077	72.18
	46.875	75.00
	53.674	85.06
	56.000	90.00
	64.016	100.00
832 x 624	49.725	74.55
852 x 480	31.468	60.05
1024 x 768	48.363	60.00
	56.476	70.06
	60.023	75.02
1280 x 768	47.700	60.00
1280 x 1024	64.000	60.00
1366 x 768	48.387	60.00

• The PC signal is supported by DVI also.



Notes

- **Synchronization input form : separate**
- The monitor recognizes 640 x 480 @60Hz signal as 480p DTV signal. So the signal is expanded, please try other signals like 640 x 480 @75Hz.
- The monitor operates abnormally if a non-standard video format is selected.
- 1280 X 768 : 40" (15:9) native resolution horizontal polarity is positive(+) vertical polarity is negative(-).
- 1366 X 768 : 32/40" (16:9) native resolution horizontal polarity is positive(+) vertical polarity is negative(-).
- Depending on the manufacturer, your PC screen might appear differently (and depending on your particular version of windows). Check your PC instruction book for information about connecting your PC to a the monitor.
- The monitor may operate abnormally if a non-standard video signal.
- "Out of range" message box will appear when an over-spec video signal is input. Change the video settings of PC when the message is displayed.

Basic Operation

Turning the Monitor ON/OFF

Press the Power button on the remote control. The monitor will turn on and you will be ready to use its features. You can also use the Power button on the front panel.

Select Source

Press INPUT button on the remote control. Then you can see the source list menu shown as below.



Source list menu

Select the source to watch with CH+/CH- button on the remote control and press the Menu/Set button.

TV Channel Selection

- 1 Connect the signal source (TV antenna) to TV input. Press INPUT button on the remote control and select TV on the source list.
- 2 Use CH+/CH- button or numeric button to change TV channel you want.
- 3 Press Pre.CH button on the remote control to watch the previous channel.
- 4 Also, you can tune the cable service, provided channels while using the cable box. For further information regarding cable TV service, contact your TV service provider(s).

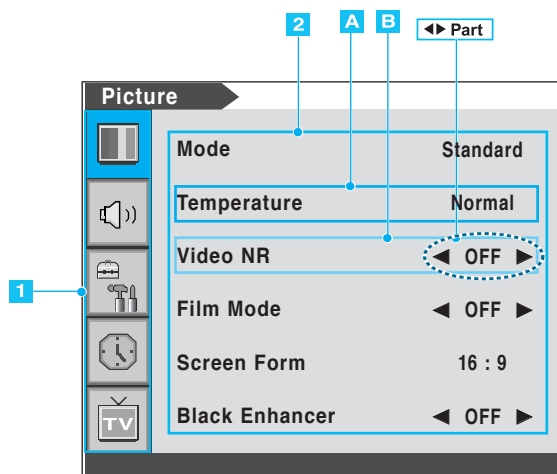
Volume Control

Use VOL+/VOL- button on the remote control to adjust the volume level.
Press Mute button on the remote control when you need to cut the sound temporarily.

OSD Menu Structure

- OSD (On Screen Display) allows users to control or adjust various features and settings in accordance with his/her preferences.
- Press the Menu/Set button on the remote control to see the main OSD menu.

► Example of OSD Menu



1 Main Menu

Press Menu/Set button on the remote control to enter the main OSD menu.
First, select main menu item you need with CH+/CH- button.
To select a main menu items, just press VOL+ or Menu/Set button on the remote control.

2 Sub Menu

Each menu item has its own sub menu items to set.

3 Sub Menu Items

A : If there is no ◀▶ part, the item has an sub menu.

You can enter the sub menu and adjust an item you need.

Select sub menu item with CH+/CH- button on the remote control and press VOL+ or Menu/Set button to enter the sub menu.

B : If there is a ◀▶ part, you can set the item by selecting ◀▶. Ex) ◀ON ▶ or ◀OFF ▶

Press VOL+ or Menu/Set button to set a ◀▶ part, and adjust it with CH+/CH- button.

Setting the Channel

Choosing the Channel Type

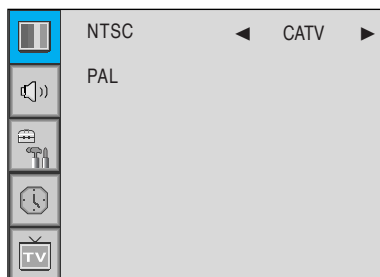
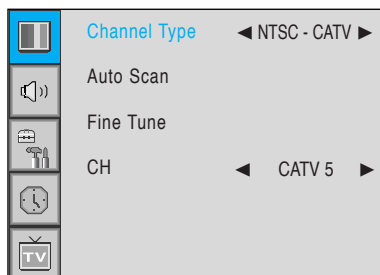
Before your television can begin memorizing the available channels, you must specify the type of signal source that is connected to the TV (i.e., an antenna, a standard cable system, an HRC, or an IRC).

- 1 Press Menu/Set button to display the main OSD menu.
- 2 Select the TV main menu item.
- 3 Press Menu/Set button to enter the sub menu.
- 4 Select **Channel Type** and press VOL+ button to enter the ◀▶ parts. Then the cursor moves into the ◀▶ parts.
- 5 Select the Channel Type with CH+/CH- button and press Back button. You can select **NTSC (AIR, CATV, IRC, HRC)** or **PAL (AIR, CATV)**.



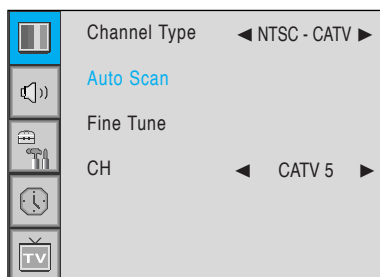
Notes

- You can enter the TV menu in TV mode only.
(When you watch a TV channel.)
- PAL means PAL-M in channel type.
- PAM-M (AIR, CATV) is used in brazil.



Storing the Channel Automatically

- 1 Press Menu/Set button to display the main OSD menu.
- 2 Select the TV main menu.
- 3 Press Menu/Set button to enter the sub menu.
- 4 Select **Auto Scan** with CH+/CH- button and press Menu/Set button on the remote control. Then the tuning bar will appear and scanning will start.

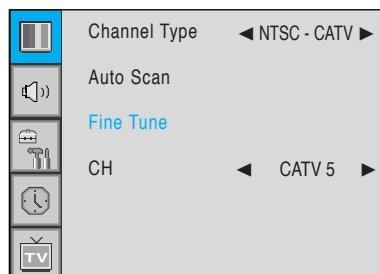


Setting the Channel

Fine Tuning the Channel Reception

The fine tuning function lets you manually adjust the monitor's tuner if you have difficulty tuning analog channels.

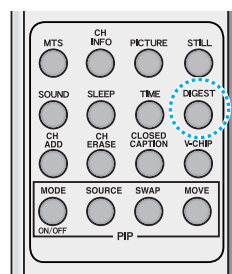
- 1 Press Menu/Set button to display the main OSD menu.
- 2 Select the TV main menu item.
- 3 Press Menu/Set button to enter the fine tune sub menu.
- 4 Select **Fine Tune** with CH+/CH- button and press Menu/Set button. Then you can see the adjust bar.
- 5 Adjust the Fine Tune with VOL+/VOL- button.



Digest

In the Digest function, you can watch 15 programs at the same time. (This function works only in TV mode)

- 1 Press the DIGEST button on the remote control.
- 2 By pressing the channel number, the selected channel becomes main window.
- 3 You can make off the digest function by pressing DIGEST button again.

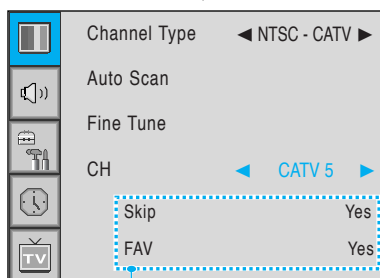
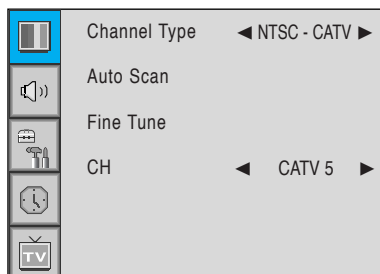


Setting the Channel

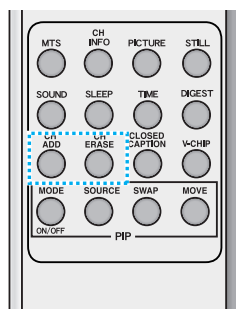
Setting the Favorite Channel

You can store of your favorite channels for each available input source (such as TV or CATV). Then, when you press the Favorite button on the remote control, the monitor display only the favorite channels you previously stored, allowing you to quickly and easily find frequently wanted channels.

- 1 Press Menu/Set button to display the main OSD menu.
- 2 Select the TV main menu.
- 3 Press Menu/Set button to enter the TV sub menu.
- 4 Select **CH** and press the Menu/Set button. Then the cursor moves into the ◀ ▶ parts and the **Skip** and **FAV** menu appear.
- 5 In the ◀ ▶ parts, select the channel to Skip or set as the Favorite channels.
- 6 Then press CH- button on the remote control to enter the sub menu.
- 7 In sub menu, move with CH+/CH- button and set the values with VOL+/VOL- button.



Sub menu appears



You can add or erase the current channel by the remote control.

1 CH ADD

Add the current channel into the scanned channel list.

2 CH ERASE

Remove the current channel from the scanned channel list.



Notes

- Only scanned channels can be set as favorite channels.


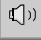




Setting the Picture

Changing the Picture Mode


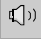


Your the monitor has 3 automatic factory preset picture settings (**Standard**, **Vivid** and **Mild**). You can choose Standard, Vivid or Mild by pressing PICTURE button on the remote control (or by making a selection from the menu). Or you can select User which automatically recalls your personalized picture setting.

- 1 Press Menu/Set button to display the main OSD menu.
- 2 Select the Picture main menu.
- 3 Press Menu/Set button to enter the sub menu.
- 4 Select **Mode** and press Menu/Set button to enter the sub menu. Then the picture sub mode appear.
- 5 Select the picture mode and press Menu/Set button.
- 6 You will see the picture setting bars. Just press Back button on the remote control. You can adjust each values of the picture setting, but the changed values are stored as in **User** mode.


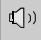




**User mode has additional settings in a sub menu:
See next page.**

	Mode	Standard
	Temperature	Normal
	Video NR	◀ OFF ▶
	Film Mode	◀ OFF ▶
	Screen Form	16 : 9
	Black Enhancer	◀ OFF ▶



	Standard
	Vivid
	Mild
	User



	Contrast	
	Bright	
	Color	
	Tint	
	Sharpness	
	Recall	



Notes

- **Alternative method** : Just press the PICTURE button on the remote control. Each time it is pressed, different mode is selected.

Setting the Picture

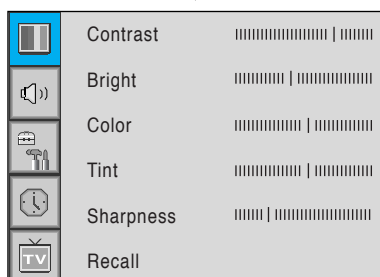
▶ Adjust User Mode

You can change the Contrast, Brightness, Color, and Sharpness according to personal preference in user mode.

- 1 Select the item to adjust with CH+/CH- button.
- 2 Press Menu/Set button.
- 3 Adjust the item with VOL+/VOL- button.
- 4 To cancel all adjust, select **Recall** and press Menu/Set button.

For a more detailed description of these settings, see the next page.

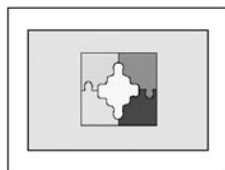
Select User mode (Previous page)



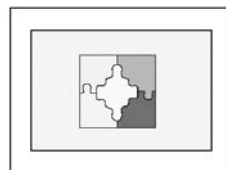
Setting the Picture

► Contrast

Adjust brightness difference between bright part of the screen and dark part.



Distinct ◀



▶ Vague

► Brightness

Adjust brightness of the screen.



Dark ◀



▶ Bright

► Color

Adjust deep and light color of the screen.



Decrease ◀



▶ Increase

► Tint

Adjusts the balance between green and yellow.



Green color is deeper ◀



▶ Red color is deeper

► Sharpness

Adjust vividness of the screen.



Less sharp ◀



▶ Sharp

Setting the Picture

Changing the Color Temperature

Your the monitor has 5 screen temperatures (color settings):

- 1 Press Menu/Set button to display the main OSD menu.
- 2 Select the Picture main menu.
- 3 Press Menu/Set button to enter the picture menu.
- 4 Select **Temperature** and press Menu/Set button to enter the sub menu. Then the picture-temperature sub menu appear.
- 5 Select the Temperature mode with CH+/CH- button and press Menu/Set button.
- 6 Press Back button to return.

► Cool 1, 2

Screen seems cool: Strong Blue.

► Normal

Normal: Factory default.

► Warm 1, 2

Screen seems warm: Strong Red.

	Mode	Standard
	Temperature	Normal
	Video NR	◀ OFF ▶
	Film Mode	◀ OFF ▶
	Screen Form	16 : 9
	Black Enhancer	◀ OFF ▶



	Cool2
	Cool1
	Normal
	Warm1
	Warm2

Video NR (Noise Reduction)

This function automatically filters out and reduces the image noise and improves picture quality when receiving weak signals.

- 1 Press Menu/Set button to display the main OSD menu.
- 2 Select the Picture main menu item.
- 3 Press Menu/Set button to enter the sub menu.
- 4 Select **Video NR** and press VOL+ button to enter the ◀▶ parts. Then the cursor moves into the ◀▶ parts.
- 5 Turn on or off Video NR function with CH+/CH- button and press Back button.







	Mode	Standard
	Temperature	Normal
	Video NR	◀ OFF ▶
	Film Mode	◀ OFF ▶
	Screen Form	16 : 9
	Black Enhancer	◀ OFF ▶

Setting the Picture

Selecting the Film Mode

This mode is in order to watch a movie composed of 24frames smoothly when the movie is converted to 30frames on TV.


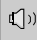




- 1 Press Menu/Set button to display the main OSD menu. Select the picture main menu item.
- 2 Press Menu/Set button to enter the sub menu.
- 3 Select **Film Mode** and press VOL+ button to enter the ◀▶ parts. Then the cursor moves into the ◀▶ parts.
- 4 Turn on or off Film Mode function with CH+/CH- button and press Back button.

	Mode	Standard
	Temperature	Normal
	Video NR	◀ OFF ▶
	Film Mode	◀ OFF ▶
	Screen Form	16 : 9
	Black Enhancer	◀ OFF ▶






Changing the Screen Form

Your the monitor has four screen forms: **16:9**, **Panorama**, **Zoom1**, **Zoom2**, **4:3**.
(For more detail description for these modes, refer to the next page.)

- 1 Press Menu/Set button to display the main OSD menu.
- 2 Select the Picture main menu.
- 3 Press Menu/Set button to enter the picture menu.
- 4 Select **Screen Form** and press Menu/Set button to enter the sub menu. Then the screen form sub menu appear.
- 5 Select the Screen Form you want and press Menu/Set button.

	Mode	Standard
	Temperature	Normal
	Video NR	◀ OFF ▶
	Film Mode	◀ OFF ▶
	Screen Form	16 : 9
	Black Enhancer	◀ OFF ▶



	16 : 9
	Panorama
	Zoom1
	Zoom2
	4 : 3

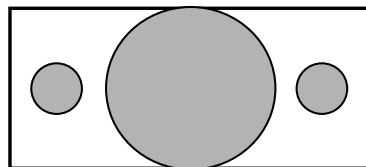
Setting the Picture

► Screen Form Description

16:9

16:9 video : No change.

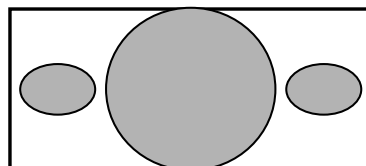
4:3 video : Expands 4:3 video signal horizontally to fit the 16:9 screen.



Panorama

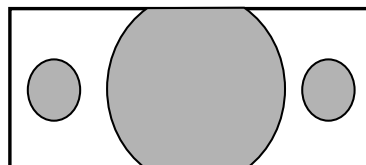
16:9 video : No change.

4:3 video : Expands 4:3 video horizontally to fit the 16:9 screen and to minimize distortion, sides are expanded more than center.



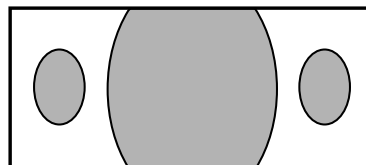
Zoom 1

Expands 16:9 mode screen vertically.



Zoom 2

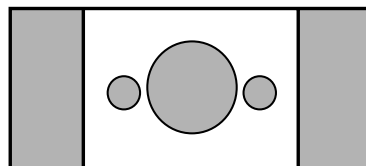
Expands zoom 1 mode screen vertically.



4 : 3

16:9 video : The image is suppressed.

4:3 video : No expansion.
There are gray areas besides the image.



Setting the Black Enhancer

This will enhance the black level / the contrast of the picture. The dark regions of the picture are made darker, while bright areas remain unchanged.

The advantage of this black-level expansion is that the black expansion is performed only if it is noticeable to the viewer.

	Mode	Standard
	Temperature	Normal
	Video NR	◀ OFF ▶
	Film Mode	◀ OFF ▶
	Screen Form	16 : 9
	Black Enhancer	◀ OFF ▶

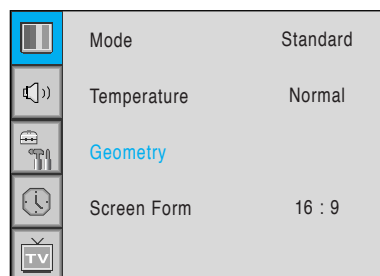
Setting the Picture [PC]

In PC mode, you can adjust the H, V-Position, Native Mode, and Phase. Also you can adjust them automatically.

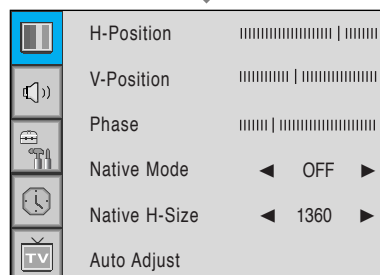
Adjusting te PC Screen (Geometry)

You can change H, V-Position, Native Mode, and Phase in PC mode like usual PC monitors.
You can also adjust them automatically. (Auto adjust function.)

- 1 Press Menu/Set button to display the main OSD menu.
- 2 Select the Picture main menu with CH+/CH- button.
- 3 Press Menu/Set button to enter the sub menu.
- 4 Select **Geometry** and press Menu/Set button to enter the sub menu. Then the picture-geometry sub menu will appear.



- 1 Select the item to adjust with CH+/CH- button.
- 2 Press Menu/Set button.
- 3 Then the cursor moves on the bar and you can adjust the value with VOL+/VOL- button.
- 4 To adjust these items, automatically, select **Auto Adjust** and press Menu/Set button.

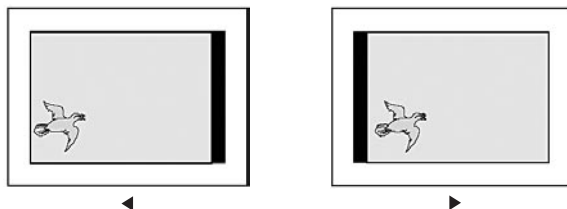


For more detail description refer to the next page.

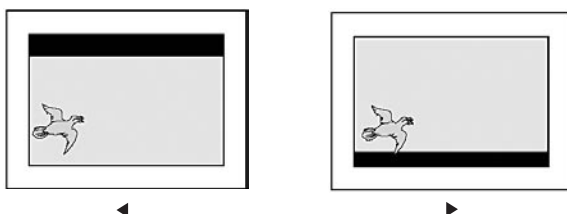
You can select the H-Size of Native Mode depending on the Input timing (1360/1366 selection)

Setting the Picture [PC]

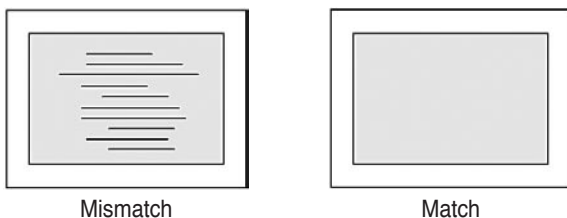
► H-Position



► V-Position



► Phase

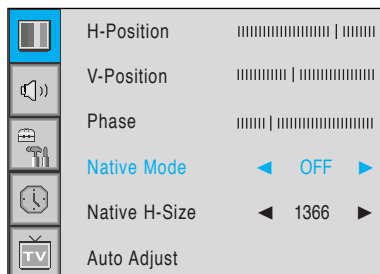


► Native Mode

When you use monitor, native mode display all timing to 1366 x 768 mode.

When you off native mode, monitor display 1366 x 768 mode expect 1360 x 768.

- 1 Select Native Mode menu and press VOL+ button to enter the ◀▶ parts. Then the cursor moves into the ◀▶ parts.
- 2 Turn the function on or off with CH+/CH- button and press Back button.



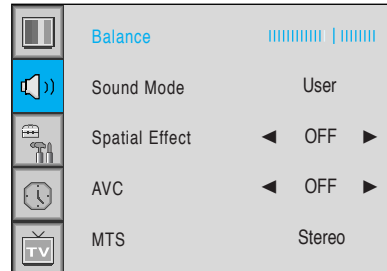
Setting the Sound

In Sound menu, you can adjust balance, MTS (Multi-Track Sound), AVC (Auto Volume Control) and select the equalizer settings.

Adjusting the Sound Balance

This control allows you to adjust the balance of the left and right speaker output.

- 1 Press Menu/Set button to display the main OSD menu.
- 2 Select the Sound main menu.
- 3 Press Menu/Set button to enter the sub menu.
- 4 Select **Balance** and press Menu/Set button.
- 5 Adjust the Balance with VOL+/VOL- button and press Menu/Set button.

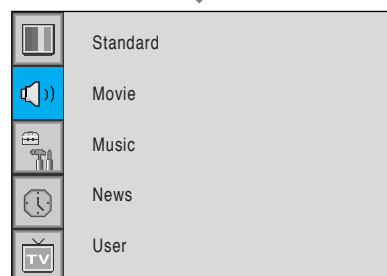
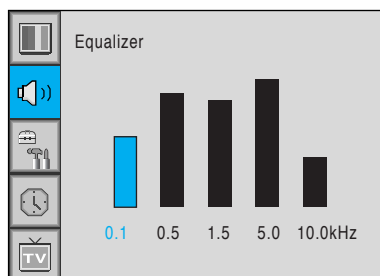
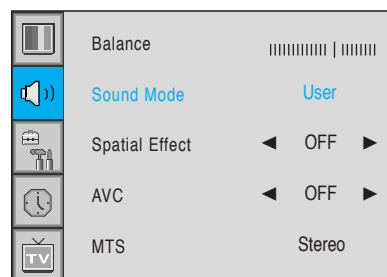


Changing the Sound Mode

Your the monitor has four automatic sound settings (**Standard**, **Movie**, **Music** and **News**) that are preset at the factory. You can activate either Standard, Movie, Music, or News by pressing SOUND on the remote control (or by making a selection from the menu) or you can select **Custom** which automatically recalls your personalized sound settings.

- 1 Press Menu/Set button to display the main OSD menu.
- 2 Select the Sound main menu.
- 3 Press Menu/Set button to enter the sub menu.
- 4 Select **Sound Mode** and press Menu/Set button to enter the sub menu. Then the mode sub menu appear.
- 5 Select the **User** setting and press Menu/Set button.
- 6 You will see the equalizer bars. Just press Back button on the remote control. You can adjust each values of equalizer, but the changed values are stored as in **User** mode.

User mode require more settings.
It has sub menu: See next page.



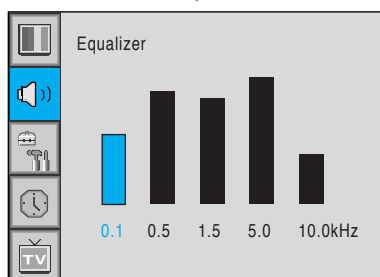
Setting the Sound

Adjusting the User Sound Mode

You can use the OSD menu to change the treble, Bass, Balance, and DRC according to your preference.

- 1 Equalizer menu appear when you select User mode.
- 2 Select a gain bar with VOL+/VOL- button on the remote control and adjust it with CH+/CH- button.
- 3 Press Back button on the remote control to exit equalizer. The result will be saved automatically.

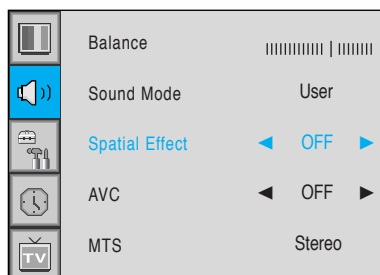
Select User mode (Previous page)



Spatial Effect

This function can create surround effect such as the sound seems to come from all directions.

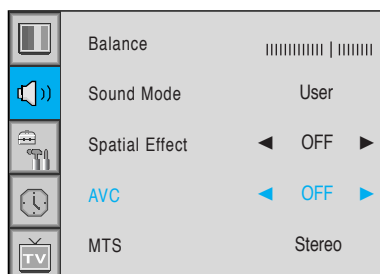
- 1 Press Menu/Set button to display the main OSD menu.
- 2 Select the Sound main menu item with CH+/CH- button.
- 3 Press Menu/Set button to enter the sub menu.
- 4 Select **Spatial Effect** and press VOL+ button.
- 5 Turn on or off Spatial Effect function with CH+/CH- button and press Menu/Set button.



AVC (Auto Volume Control)

This function adjust sound volume level automatically depending on the source.

- 1 Press Menu/Set button to display the main OSD menu.
- 2 Select the Sound main menu.
- 3 Press Menu/Set button to enter the sub menu.
- 4 Select **AVC** and press VOL+ button to enter the ◀▶ parts. Then the cursor moves into the ◀▶ parts.
- 5 Turn on or off AVC function with CH+/CH- button and press Back button.



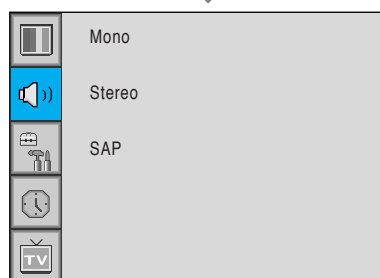
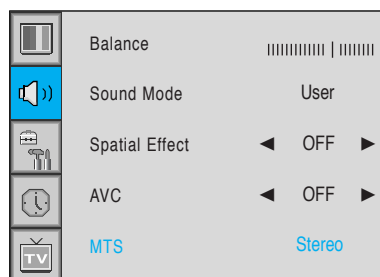
Setting the Sound

MTS (Multichannel Television Sound)

Select sound signal format from the input source. There are **Mono**, **Stereo**, **SAP** sound formats.

- 1 Press Menu/Set button to display the main OSD menu.
- 2 Select the Sound main menu with CH+/CH- button on the remote control.
- 3 Press Menu/Set button to enter the sub menu.
- 4 Select **MTS** and press Menu/Set button to enter the sub menu. Then the MTS sub menu appear.
- 5 Select the MTS format with CH+/CH- and press Menu/Set button.

The available sound forms are displayed.
Usually, you can see Mono and Stereo.



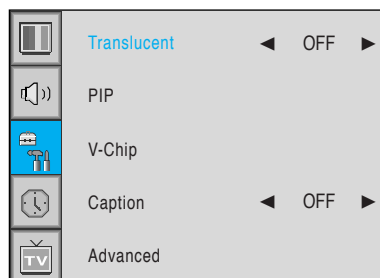
Setting the Others

In Setup menu, you can adjust the transparency of the OSD menu and set PIP and others.

Adjusting the Transparency of the OSD Window

Adjust the transparency of the OSD menu. There are 8 step from OFF to 7.

- 1 Press Menu/Set button to display the main OSD menu.
- 2 Select the Setup main menu with CH+/CH- button on the remote control.
- 3 Press Menu/Set button to enter the sub menu.
- 4 Select **Translucent** and press VOL+ button to enter the ◀▶ parts. Then the cursor moves into the ◀▶ parts.
- 5 Adjust with CH+/CH- button and press Back button.



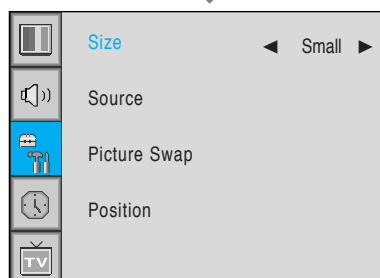
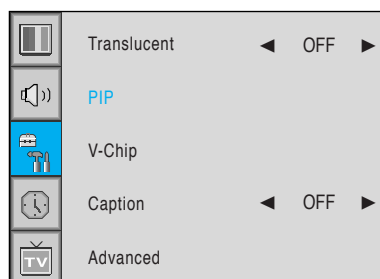
PIP (Picture in Picture)

You can watch two channels or sources at the same time. And Setup PIP size and position.

- 1 Press Menu/Set button to display the main OSD menu.
- 2 Select the Setup main menu with CH+/CH- button on the remote control.
- 3 Press Menu/Set button to enter the sub menu.
- 4 Select **PIP** and press Menu/Set button to enter the sub menu. Then the PIP sub menu appear.



PIP Window



Changing the Size in PIP

Change the size of the PIP window. There are 3 sizes: Small, Large, Twin.

- 1 Select **Size** and press VOL+ button to enter the ◀▶ parts. Then the cursor moves into the ◀▶ parts.
- 2 Adjust Size function with CH+/CH- button and press Menu/Set button.

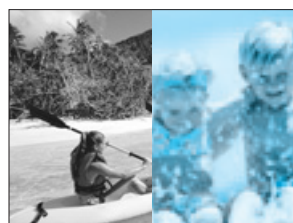
Setting the Others



Small



Large

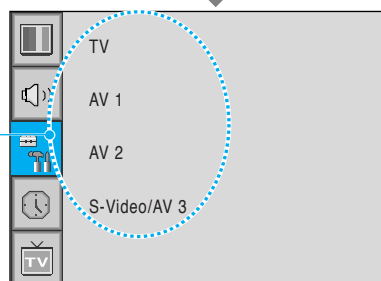
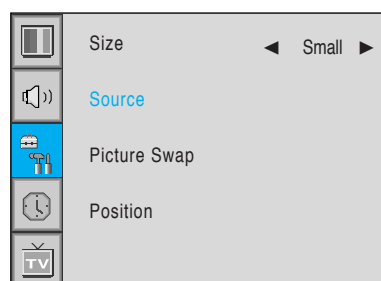


Twin

Choosing the Source in PIP

Change the source of the PIP window.

- 1 Select **Source** and press Menu/Set button to enter the sub menu. Then the PIP sub menu appear.
- 2 The available sources will be displayed.
Select the source and press Menu/Set button.



This picture is an example.
The displayed sources may be
different depending on the main
input source.

PIP \ Main	TV	AV 1	AV 2	S-Video/AV 3	Component 1	Component 2	PC	DVI
TV	✓	✓	✓	✓	✓	✓	✓	✓
AV 1	✓	—	✓	✓	✓	✓	✓	✓
AV 2	✓	✓	—	✓	✓	✓	✓	✓
S-Video/AV 3	✓	✓	✓	—	✓	✓	✓	✓
Component 1	✓	✓	✓	✓	—	—	—	—
Component 2	✓	✓	✓	✓	—	—	—	—
PC	✓	✓	✓	✓	—	—	—	—
DVI	✓	✓	✓	✓	—	—	—	—

Picture Swap in PIP

Swap the sources of the main screen and the PIP window.

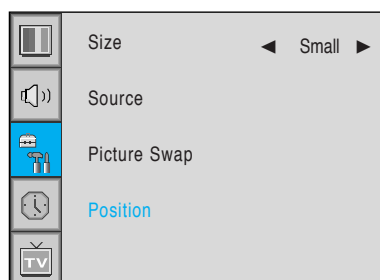
Select picture swap and press Menu/Set button.

Setting the Others

► Changing the Position in PIP

Change the position of the PIP window.

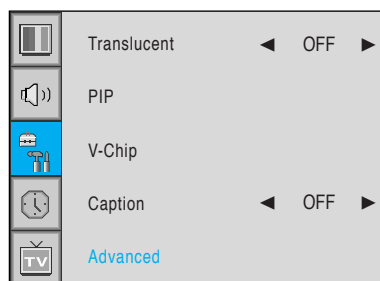
- 1 Select **Position** with CH+/CH- button on the remote control and press Menu/Set button to enter the sub menu. Then the PIP sub menu appear.
- 2 In sub menu, there are four positions. Select the Position with CH+/CH- button on the remote control and press Back button.



Other Advanced Function

You can Setup ID, Blue Back, Language, and Front Key Lock in Advanced menu.

- 1 Press Menu/Set button to display the main OSD menu.
- 2 Select the Setup main menu with CH+/CH- button on the remote control.
- 3 Press Menu/Set button to enter the sub menu.
- 4 Select **Advanced** and press Menu/Set button to enter the Advanced menu. Then the advanced sub menu appear.

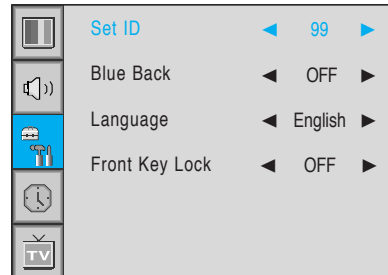


Setting the Others

► Set ID

Set the ID of the monitor for mass-controlling through the serial port.

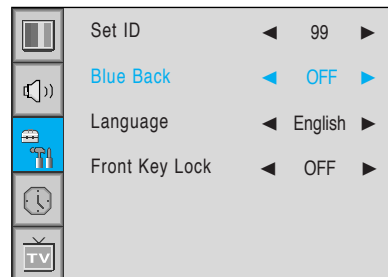
- 1 Select **Set ID** and press VOL+ button to enter the ◀▶ part. Then the cursor moves into the ◀▶ part.
- 2 Adjust with CH+/CH- button and press Back button.



► Setting the Blue Screen Mode

You can set to display blue-color screen instead of noise screen.

- 1 Select **Blue Back** and press VOL+ button to enter the ◀▶ parts. Then the cursor moves into the ◀▶ parts.
- 2 Turn the function on or off with CH+/CH- button and press Back button.

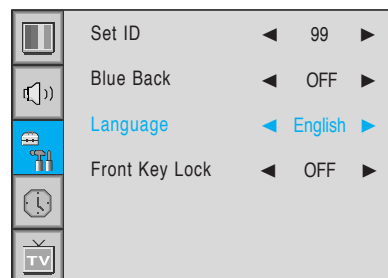


► Changing the OSD Language

Set the language to use in OSD.

Supported languages are English, French, German, Spanish, and Italian.

- 1 Select **Language** and press VOL+ button to enter the ◀▶ parts. Then the cursor moves into the ◀▶ parts.
- 2 Choose the Language with CH+/CH- button and press Back button.

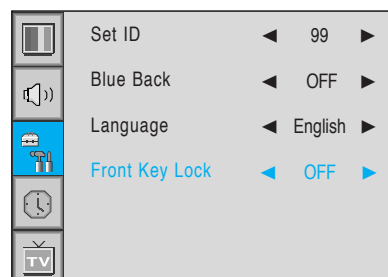


► Front Key Lock in Advance

Lock the OSD panel of the monitor.

It can protect the monitor from children's power On/Off or other operation by miss.

- 1 Select **Front Key Lock** and press VOL+ button to enter the ◀▶ parts. Then the cursor moves into the ◀▶ parts.
- 2 Turn the function on or off with CH+/CH- button and press Back button.

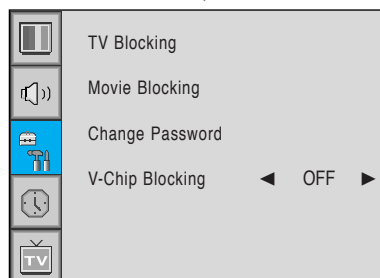
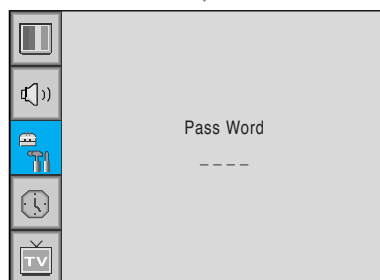
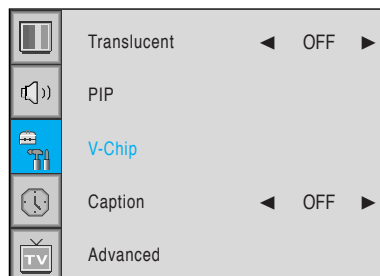


Setting the Others

V-Chip (TV Parental Guidelines)

Parental restrictions can be Setup using either of two methods: The TV guidelines or the MPAA rating.

- 1 Press Menu/Set button to display the main OSD menu.
- 2 Select the Setup main menu with CH+/CH- button on the remote control.
- 3 Press Menu/Set button to enter the sub menu.
- 4 After enter the password, the V-Chip sub menu appear.




Caution

- The factory default number is 0000 and the master button number is 9673.

Setting the Others

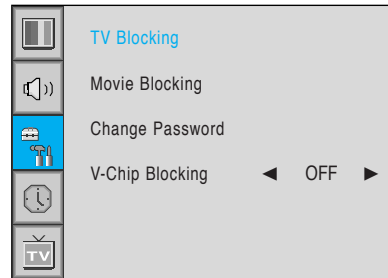
▶ TV Blocking in V-Chip




















You can Setup restrictions using the "TV Parental Guidelines" of FCC.

- 1 Select **TV Blocking** with CH+/CH- button on the remote control and press Menu/Set button to enter the sub menu. Then the TV Blocking sub menu appear.
- 2 You can independently lock the TV ratings. The locked TV (FCC) ratings are indicated by the symbol .
- 3 Press CH+/CH-/VOL+/VOL- buttons and the Menu/Set button to activate the appropriate restrictions for TV (FCC) rating system.

Note: These categories consist of two separate groups: TV-Y and TV-Y7 (young children through age 7), and TV-G through TV-MA (everybody else).


The restrictions for these two groups work independently: If a household includes very young children as well as young adults, the TV guidelines must be Setup separately for each age group.

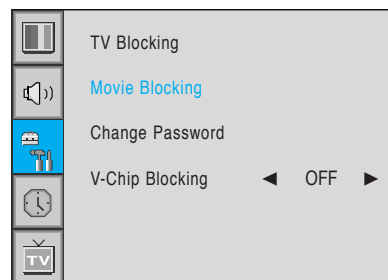










	Block	FV	D	L	S
TV-Y					
TV-Y7					
TV-G					
TV-PG					
TV-14					
TV-MA					

▶ Movie Blocking in V-Chip

The Movie Blocking uses the motion picture association of america (MPAA) system, and its main application is for movies. When the rating controls is on, the TV will automatically block any programs that are coded with objectionable ratings (either MPAA or TV-Ratings).

- 1 Select **Movie Blocking** with CH+/CH- button on the remote control and press Menu/Set button to enter the sub menu. Then the Movie Blocking sub menu appear.
- 2 You can independently lock the TV ratings. The locked movie (FCC) ratings are indicated by the symbol .
- 3 Press CH+/CH- buttons and the Menu/Set button to activate the appropriate restrictions for MPAA rating system.

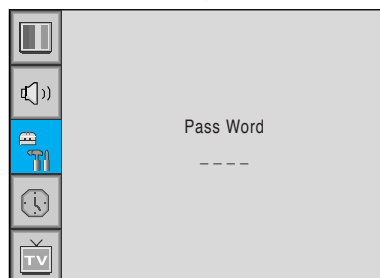
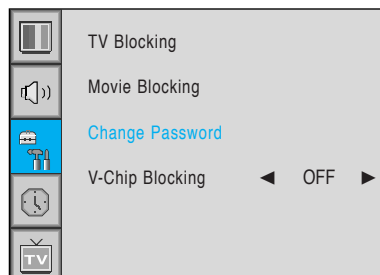


	Block
MPAA-G	
MPAA-PG	
MPAA-PG-B	
MPAA-R	
MPAA-R	
MPAA-NC	
MPAA-X	
MOZZ-NR	

Setting the Others

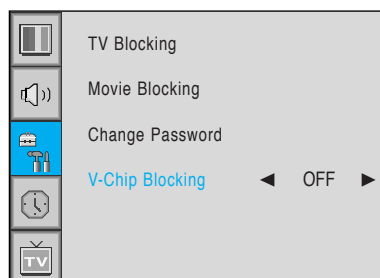
► Change Password in V-Chip

- 1 Select **Change Password** with CH+/CH- button on the remote control and press Menu/Set button to enter the sub menu. Then the password change sub menu appear.
- 2 Enter the new password with numeric buttons on the remote control.



► V-Chip Blocking in V-Chip

- 1 Select **V-Chip Blocking** with CH+/CH- buttons on the remote control.
- 2 Enter to the ◀▶ part by pressing VOL+ button. Then the cursor moves into the ◀▶ parts.
- 3 On or off the V-Chip Blocking with CH+/CH- buttons.
- 4 Exit with Back button on the remote control.









Setting the Time

In the Time menu, you can set the current time and auto power On/Off.

Setting the Current Time

Set the current time.







- 1 Press Menu/Set button to display the main OSD menu.
- 2 Select the Time main menu.
- 3 Press Menu/Set button to enter the sub menu.
- 4 Select **Time Set** by pressing VOL+ button.
- 5 Move the cursor by pressing VOL+/VOL- button and adjust time by CH+/CH- button.

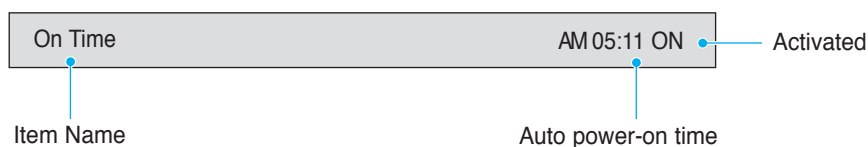
	Time Set	AM 03:29
	On Time	AM 05:11 ON
	On Channel	◀ 99 ▶
	On Volume	◀ 100 ▶
	Off Time	AM 05:11 OFF
	Sleep	◀ OFF ▶

Setting the On Time

This the monitor can be set to turn on automatically at specific time that you choose.
Before using the timer, you must set the monitor's time as described previously.

- 1 Press Menu/Set button to display the main OSD menu.
- 2 Select the Time main menu with CH+/CH- button on the remote control.
- 3 Press Menu/Set button to enter the sub menu.
- 4 Select **On Time** with CH+/CH- button and press VOL+ button.
- 5 Move the cursor by VOL+/VOL- button and adjust time by CH+/CH- button.

	Time Set	AM 03:29
	On Time	AM 05:11 ON
	On Channel	◀ 99 ▶
	On Volume	◀ 100 ▶
	Off Time	AM 05:11 OFF
	Sleep	◀ OFF ▶






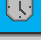


Setting the Time

Setting the On Channel

Set the channel when the monitor power turn on automatically.

Available only when the time is set and on time is on.


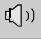




- 1 Press Menu/Set button to display the main OSD menu.
- 2 Select the Time main menu with CH+/CH- button on the remote control.
- 3 Press Menu/Set button to enter the sub menu.
- 4 Select **On Channel**.
- 5 Enter to the ◀▶ part with VOL+ button. Then the cursor moves into the ◀▶ parts.
- 6 Adjust the channel with CH+/CH- button. Press Back button to return.

	Time Set	AM 03:29
	On Time	AM 05:11 ON
	On Channel	◀ 99 ▶
	On Volume	◀ 100 ▶
	Off Time	AM 05:11 OFF
	Sleep	◀ OFF ▶

Setting the On Volume

Available only when the time is set and on time is on.

- 1 Press Menu/Set button to display the main OSD menu.
- 2 Select the Time main menu with CH+/CH- button on the remote control.
- 3 Press Menu/Set button to enter the sub menu.
- 4 Select **On Volume**.
- 5 Enter to the ◀▶ part by pressing VOL+ button. Then the cursor moves into the ◀▶ parts.
- 6 Adjust the sound volume level with CH+/CH- button.

	Time Set	AM 03:29
	On Time	AM 05:11 ON
	On Channel	◀ 99 ▶
	On Volume	◀ 100 ▶
	Off Time	AM 05:11 OFF
	Sleep	◀ OFF ▶

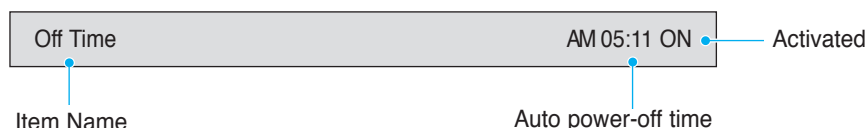
Setting the Time

Setting the Off Time

This the monitor can be set to turn off automatically at specific times that you choose. Before using the timer, you must set the monitor's clock as described previously.

- 1 Press Menu/Set button to display the main OSD menu.
- 2 Select the Time main menu with CH+/CH- button on the remote control.
- 3 Press Menu/Set button to enter the sub menu.
- 4 Select **Off Time** with CH+/CH- button on the remote control and press VOL+ button.
- 5 Move the cursor with VOL+/VOL- button and adjust time with CH+/CH- button.

	Time Set	AM 03:29
	On Time	AM 05:11 ON
	On Channel	◀ 99 ▶
	On Volume	◀ 100 ▶
	Off Time	AM 05:11 OFF
	Sleep	◀ OFF ▶



Setting the Sleep Timer

You can set your the monitor to automatically turn off after a preset interval.

If you turn off the monitor in the state of setting up sleep time and turn on again, sleep time erased therefore Setup again. The time period runs from OFF(0min) to 180min. (OFF, 10min, 20, 30, 60, 90, 120, 150, 180)

- 1 Press Menu/Set button to display the main OSD menu.
- 2 Select the Time main menu. With CH+/CH- button on the remote control.
- 3 Press Menu/Set button to enter the sub menu.
- 4 Select **Sleep** with CH+/CH- button on the remote control and press VOL+ button.
- 5 Enter to the ◀▶ part with VOL+ button. Then the cursor moves into the ◀▶ parts.
- 6 Set the time period with CH+/CH- button.
- 7 Press Back button to return.

	Time Set	AM 03:29
	On Time	AM 05:11 ON
	On Channel	◀ 99 ▶
	On Volume	◀ 100 ▶
	Off Time	AM 05:11 OFF
	Sleep	◀ OFF ▶

Troubleshooting

If your monitor is not working properly, please scan this list of problems and possible solutions. It may save you time and money.

Problem	Quick Action for Possible Solution
No picture & no sound	<ul style="list-style-type: none">• Check whether the monitor is turned on.• Power cord inserted into wall outlet?• Plug another product's power cord into the wall outlet where the monitor's power cord was plugged in.
Picture ok & no sound	<ul style="list-style-type: none">• Press the VOLUME(▶) button.• Check the audio input signal.
The remote control doesn't work	<ul style="list-style-type: none">• Check to see if there is any object between the monitor and the remote control causing obstruction.• Check to see if the batteries are installed with the correct polarities.
Digital broadcasting screen problem	<ul style="list-style-type: none">• Check the digital signal strength and input antenna.
No or poor color or poor picture	<ul style="list-style-type: none">• Select color in the picture and press VOLUME (▶) button.• Keep a certain distance between the monitor and the input source.• Activate any function to restore the brightness of the picture.• Check to see that both the monitor and the source are plugged in and turned on.
The image is too light or too dark	<ul style="list-style-type: none">• Adjust the brightness or contrast settings.
The image is too large or too small	<ul style="list-style-type: none">• Adjust the size settings.
No output from one of the speakers	<ul style="list-style-type: none">• Adjust Balance in the sound menu.

Warranty Card

Limited Warranty

Subject to the Limitations, Exclusions and Disclaimers hereof, InFocus Corporation ("InFocus") warrants that the LCD Thin Display Device and Accessories (hereinafter collectively or individually referred to as "Product" as appropriate) purchased from InFocus, an InFocus distributor, or an InFocus reseller will conform to InFocus' specifications and be free from defects in material or workmanship for the respective Limited Warranty period provided below.

InFocus does not warrant that the Product will meet the specific requirements of the end-user customer. If the Product while subject to this Limited Warranty, is defective in material or workmanship during the warranty period, then InFocus, at its option, will REPAIR or REPLACE the Product. All exchanged parts and products replaced under this Limited Warranty will become property of InFocus. InFocus' sole obligation is to supply (or pay for) all labor necessary to repair the Product found to be defective within the Limited Warranty period and to repair or replace defective parts with new parts or, at the option of InFocus, serviceable used parts that are equivalent or superior to new parts performance. Limited Warranty periods are as follows:

- **Product Limited Warranty Period:** one (1) year from date of purchase.
- **Accessory Product Limited Warranty Period:** one (1) year from date of purchase.

WARRANTY LIMITATION AND EXCLUSION

THIS WARRANTY SETS FORTH INFOCUS' MAXIMUM LIABILITY FOR ITS PRODUCT.

THIS WARRANTY EXTENDS ONLY TO PRODUCTS PURCHASED FROM INFOCUS OR AN INFOCUS AUTHORIZED RESELLER. InFocus shall have no further obligation under the foregoing Limited Warranty if the Product has been damaged due to abuse, improper ventilation, fire, water, disaster, mispackaging, shipping, lightning or other acts of nature, misuse, neglect, smoke exposure (cigarette or otherwise), accident, unusual physical or electrical stress and/or power surges, unauthorized modifications (including use of an unauthorized mount), tampering, alterations, service other than by InFocus or its authorized service providers, or failure caused other than from ordinary use or failure to properly use the Product in the application for which said product was intended.

In addition, failure of the end-user to follow maintenance procedures as outlined in the product's user guide, where a schedule is specified for regular cleaning of certain parts (based on usage and environment), and the end-user has failed to follow such schedule, the Product will not be covered under the Limited Warranty. Finally, InFocus shall have no further obligation if InFocus Product was subjected to operating conditions outside of the range specified in the user's guide or in this Limited Warranty. This Limited Warranty excludes Product cleaning, repair, or replacement of plastics and glass due to cosmetic damage and damage as a result of normal wear. Product repair outside of the terms of the Limited Warranty will be on a time and materials basis. Prolonged Product "demonstration" causes unusual Product wear and is not considered normal use under the terms of this Limited Warranty. Wide screen format displays (16:9, the aspect ratio of the screen width to height) are primarily designed to view wide screen format full-motion video. The images displayed on them should primarily be in the wide screen 16:9 ratio format, or expanded to fill the screen if your model offers this feature, and constantly moving. Displaying stationary graphics and images on screen, such as the dark side-bars on non-expanded standard 4:3 ratio format video, should be limited to no more than 15% of the total viewing time. LCD burn-in as a result of excessive display of static images is not covered under the terms of this Limited Warranty. The Accessory Product Limited Warranty covers the accessory item only and excludes normal wear. Remanufactured Products and Software Products are exempt from the foregoing Limited Warranty. Please refer to the appropriate Remanufactured Product Limited Warranty or Software Product Limited Warranty for applicable Warranty information.

DISCLAIMER OF UNSTATED WARRANTIES

THE WARRANTY PRINTED ABOVE IS THE ONLY WARRANTY APPLICABLE TO THIS PRODUCT. ALL OTHER WARRANTIES, EXPRESS OR IMPLIED, INCLUDING, BUT NOT LIMITED TO, THE IMPLIED WARRANTIES OF MERCHANTABILITY AND FITNESS FOR PARTICULAR PURPOSE ARE DISCLAIMED. THERE ARE NO WARRANTIES THAT EXTEND BEYOND THE DESCRIPTION ON THE FACE HEREOF AND THE FOREGOING WARRANTY SHALL NOT BE EXTENDED, ALTERED OR VARIED EXCEPT BY WRITTEN INSTRUMENT SIGNED BY INFOCUS. SOME JURISDICTIONS DO NOT ALLOW LIMITATIONS ON HOW LONG AN IMPLIED WARRANTY MAY LAST, SO SUCH LIMITATIONS MAY NOT APPLY TO YOU.

Warranty Card

Limited Warranty Period

The Limited Warranty periods hereof commence on the date of purchase by the end-user customer. These Limited Warranty provisions shall apply only to the end-user purchaser (first person or entity that purchased a new Product for personal or business use and not for the purpose of distribution or resale). SOME JURISDICTIONS MAY GRANT YOU CONSUMER RIGHTS WITH MINIMUM WARRANTY DURATION THAT DIFFER FROM THE DURATIONS PROVIDED HEREIN, AND INFOCUS WILL HONOR ALL SUCH CONSUMER RIGHTS.

To Be Eligible For Limited Warranty Coverage

Any person exercising a claim under this Limited Warranty must establish to the satisfaction of InFocus both the date of purchase and that the Product was purchased new from InFocus or an InFocus authorized reseller. The sales receipt or invoice, showing the date of purchase of the Product is the proof of the date of purchase.

To Obtain Warranty Service

During the Limited Warranty period, to exercise this Limited Warranty, the purchaser must first contact 1) InFocus, 2) a service facility authorized by InFocus or 3) the place of original purchase.

InFocus Customer Service - 1-503-685-8888 or visit www.infocus.com/service.

For Warranty service, the purchaser will be advised to return or deliver the defective Product freight and all fees prepaid, to an InFocus Service Center or to a service facility authorized by InFocus. When returning Product to InFocus, a Return Materials Authorization (RMA) # is required and must be clearly displayed on the outside of the shipping carton or a similar package affording an equal degree of protection. InFocus or the service facility authorized by InFocus will return the repaired/replaced Product freight prepaid to the purchaser.

Products returned for Warranty service must be accompanied by a written letter that: (i) explains the problem; (ii) provides proof of date of purchase; (iii) provides the authorized reseller's name; and (iv) provides the model and serial number of the Product. Upon request of InFocus Corporation or a service facility authorized by InFocus, proof of legal import must accompany the warranty repair Product, otherwise the Product must be returned to the place of original purchase, to the manufacturer (Purchaser must bear all tax, duty and freight), or the Purchaser must bear charges for the warranty repair.

No repair or replacement of Product or part thereof shall extend the Limited Warranty period as to the entire Product. Warranty on the repair part and workmanship shall only be effective for a period of ninety (90) days following the repair or replacement of that part or the remaining period of the Product Limited Warranty whichever is greater.

LIMITATION OF LIABILITY

IT IS UNDERSTOOD AND AGREED THAT INFOCUS' LIABILITY WHETHER IN CONTRACT, IN TORT, UNDER ANY WARRANTY, IN NEGLIGENCE OR OTHERWISE SHALL NOT EXCEED THE RETURN OF THE AMOUNT OF THE PURCHASE PRICE PAID BY PURCHASER AND UNDER NO CIRCUMSTANCES SHALL INFOCUS BE LIABLE FOR SPECIAL, INDIRECT, INCIDENTAL OR CONSEQUENTIAL DAMAGES OR LOST PROFITS, LOST REVENUES OR LOST SAVINGS. THE PRICE STATED FOR THE PRODUCTS IS A CONSIDERATION IN LIMITING INFOCUS' LIABILITY.

Limitation on Bringing Action - No action, regardless of form, arising out of the agreement to purchase the Product may be brought by purchaser more than one year after the cause of action has accrued.

Governing Law - Any action, regardless of form, arising out of the agreement to purchase the Product is governed by Oregon law.

Mandatory Arbitration - Any action, regardless of form, arising out of the agreement to purchase the Product is subject to mandatory arbitration.

SOME JURISDICTIONS DO NOT ALLOW THE EXCLUSION OR LIMITATION OF INCIDENTAL OR CONSEQUENTIAL DAMAGES SO THE ABOVE LIMITATION OR EXCLUSION MAY NOT APPLY TO YOU. THIS LIMITED WARRANTY GIVES YOU SPECIFIC LEGAL RIGHTS, AND YOU MAY ALSO HAVE OTHER RIGHTS, DEPENDING ON JURISDICTION.

Memo

Memo