

Product photo
(inside)

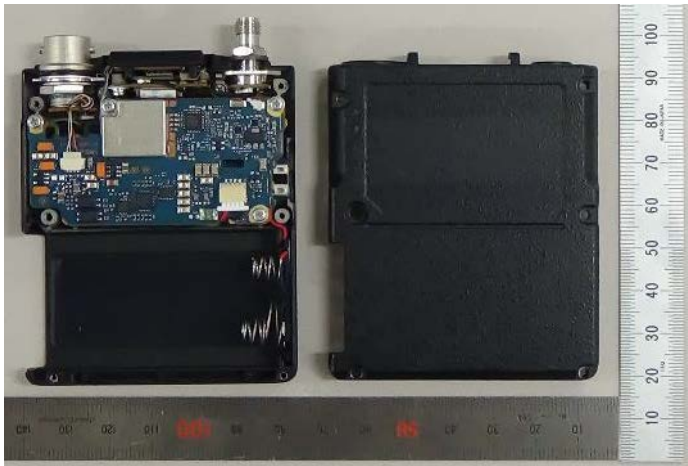


Fig.7:Remove the rear panel

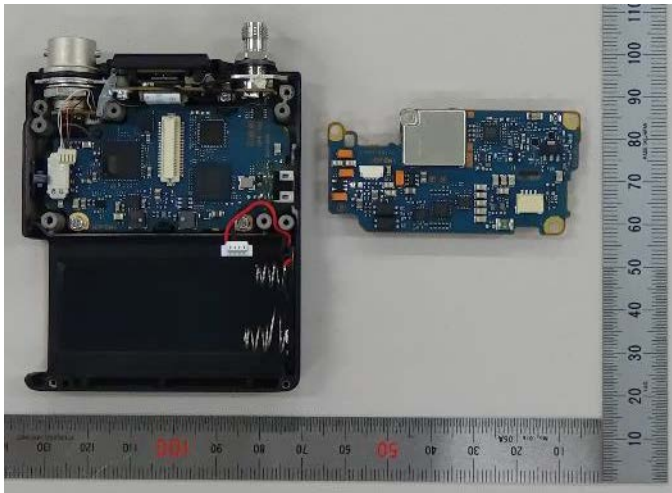


Fig.8:Remove the board TX-172

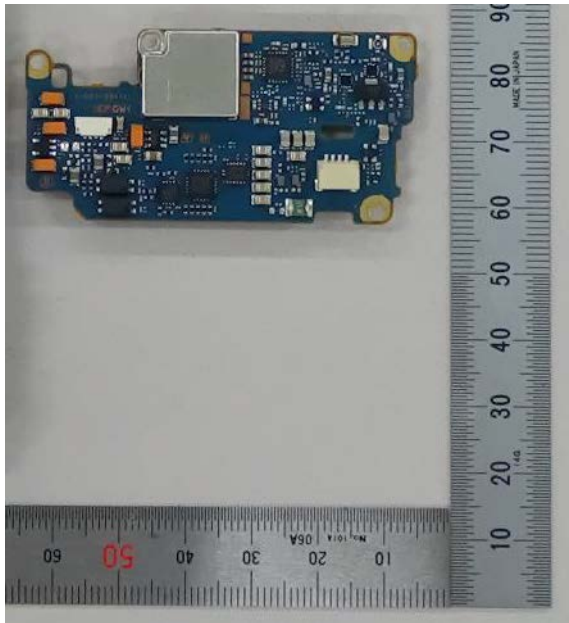


Fig.9:Side B of board TX-172

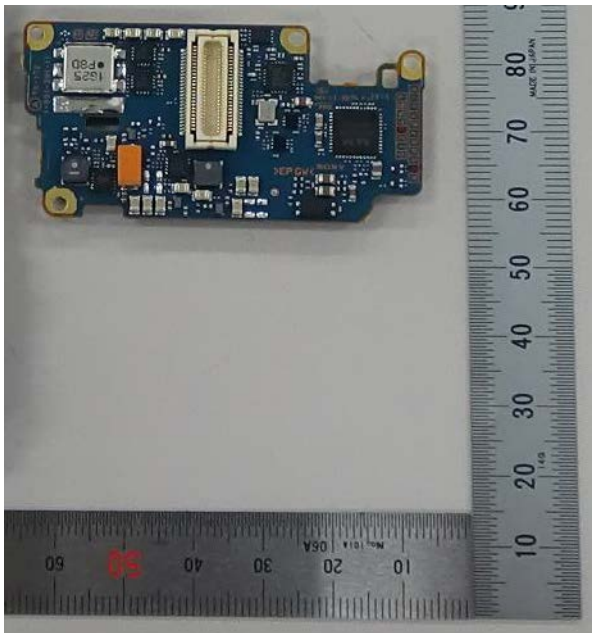


Fig.10:Side A of board TX-172

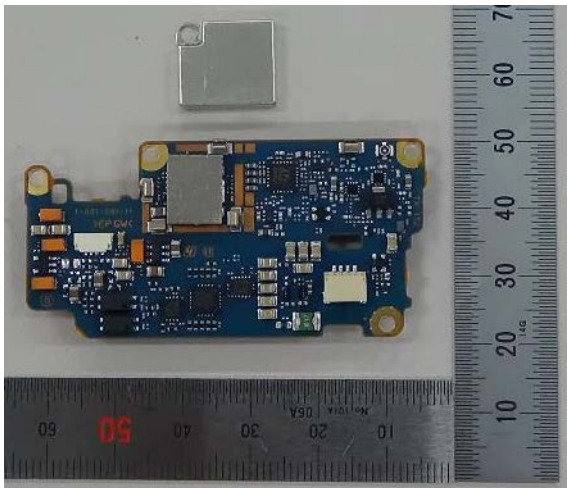


Fig.11:Remove the shield case

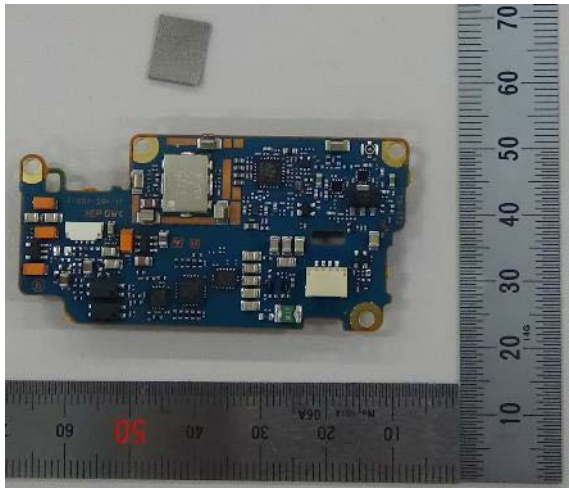


Fig.12:Remove the electromagnetic absorber sheet

Product photo
(inside)

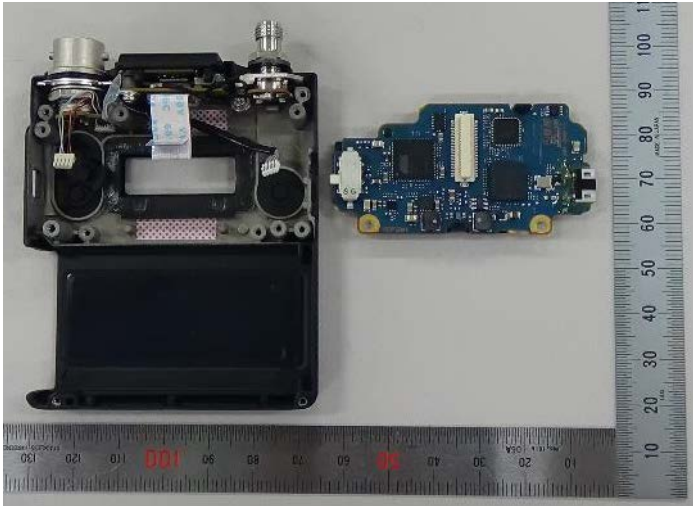


Fig.13:Remove the board DPR-396

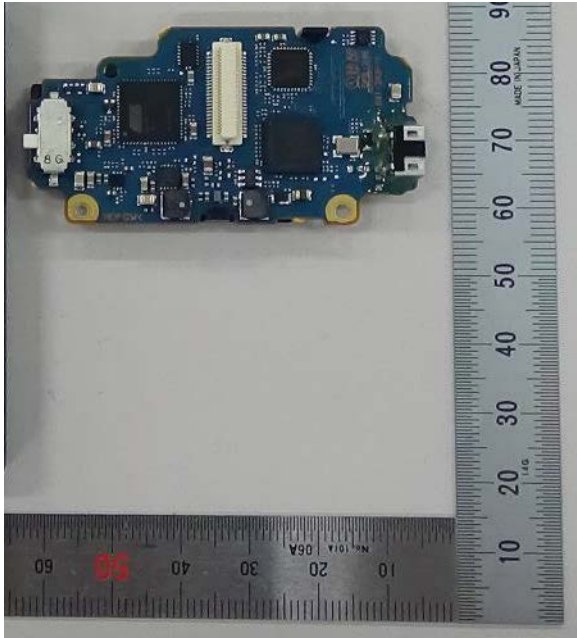


Fig.14:Side A of board DPR-396

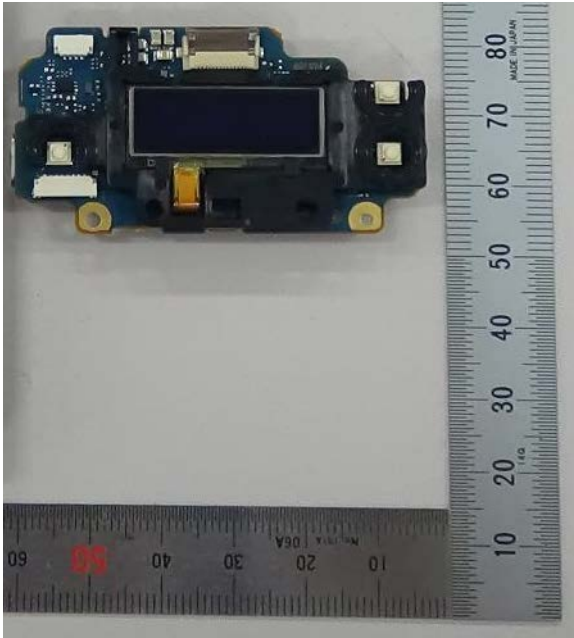


Fig.15:Side B of board DPR-396

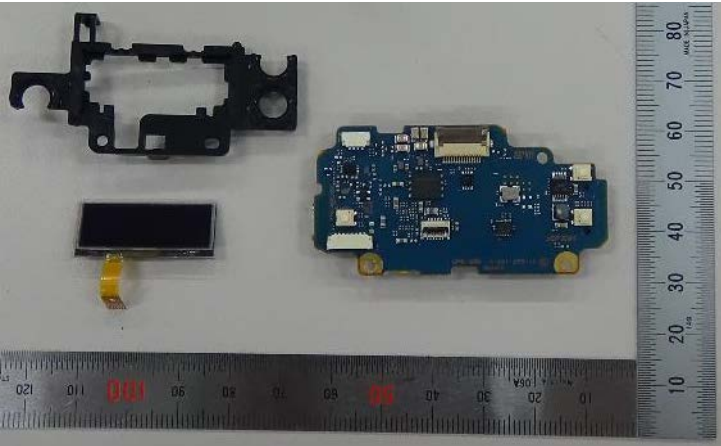


Fig.16:Remove the OLED display



Fig.17:Remove the MIC/ANTENNA
connector and RM assembly



Fig.18:MIC connector

Product photo
(inside)



Fig.19:RM assembly



Fig.20:Side B of board RM-215

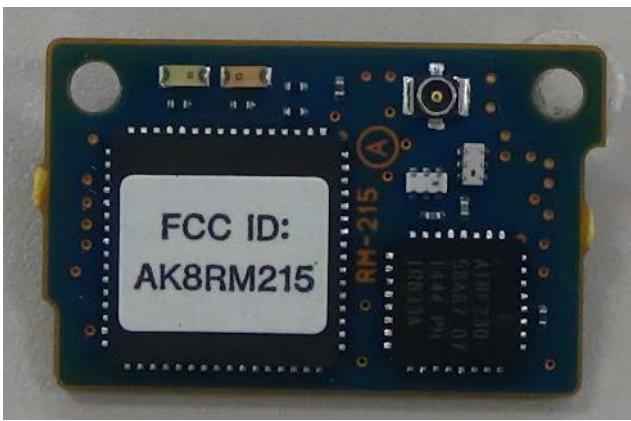


Fig.21:Side A of board RM-215

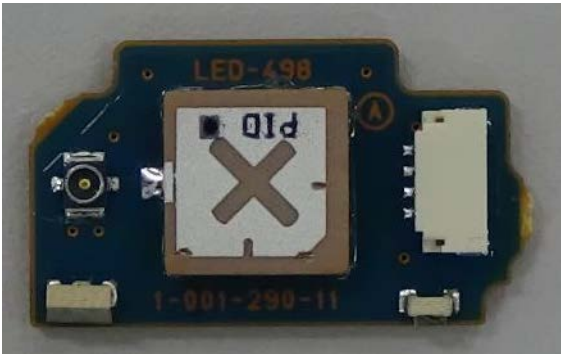


Fig.22:Side A of board LED-498

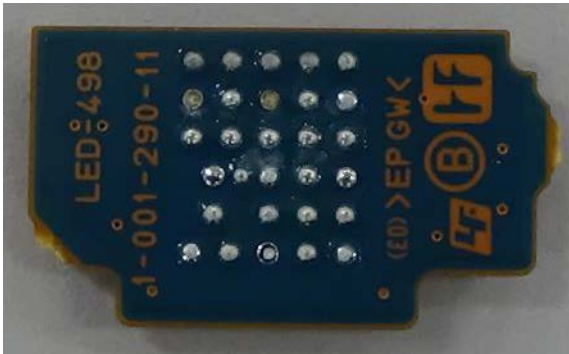


Fig.23:Side B of board LED-498