

尺寸：105x148.5mm 材质：超感米100g 折页方式：骑马钉

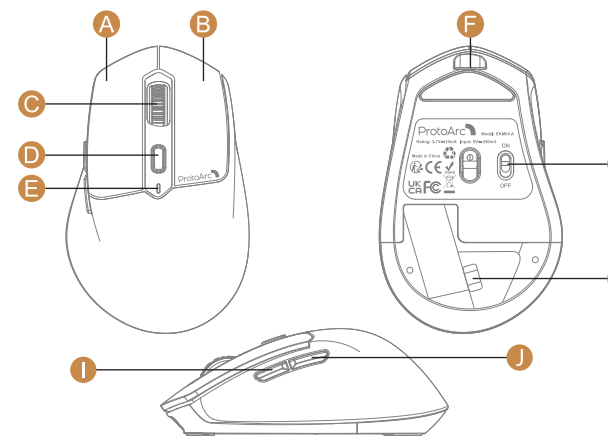
英语

User Manual

Wireless Mouse

Model: MW360

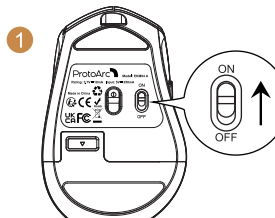
Product Features



- A Left Button
- B Right Button
- C Scroll Wheel
- D DPI Button
- E Low Battery / Charging Indicator
- F TYPE-C Charging Port
- G Power Switch
- H USB Receiver
- I Forward Button
- J Backward Button

- 1 -

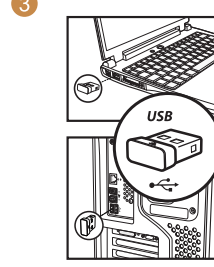
2.4G USB Connection



1. Switch the mouse ON.



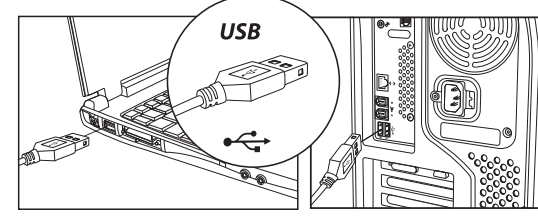
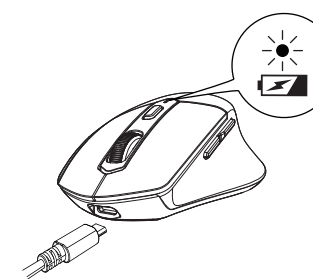
2. Take out the USB receiver from the bottom of the mouse.



3. Plug the USB receiver into the USB port of the computer, then the mouse can work normally.

- 2 -

Charging Guide



- When the battery is low, the low battery red indicator starts flashing until the keyboard/mouse turns off.
- Plug the Type-C port into the keyboard/mouse and the USB-A port into the computer to charge. The red light stays on while charging.
- It takes 2-3 hours to fully charge. The indicator turns green when fully charged.

- 3 -

Product Parameters

Mouse:

DPI	800/1200/1600/2400
Battery Capacity	300mAh
Working Voltage	3.7V
Working Current	≤5mA
Standby Current	≤1.5mA
Sleeping Current	≤0.3mA
Standby Time	≥365 Days
Working Time	60 Hours
Charging Time	≤2 Hours
Wake up Way	Press any button
Mouse Dimension	113.3x72.1x41.8mm

- 4 -

Multimedia Functions

Keys	Functions	Keys	Functions
※	Brightness -	※	Brightness +
⌂	Window Switching	⌂	Multi-window Preview
⌂	Show Desktop	Q	Search
⌂	Select All	⌂	Copy
⌂	Cut	⌂	Paste
⌂	Mute	⌂	Home
⌂	Screenshot		
⌂	Press FN+ESC to turn ON/OFF the FN function		

Note: The FN function is for alternate commands (F1-F12 & multimedia functions are dual-use keys).

- 5 -

NOTE:

This equipment has been tested and found to comply with the limits for a Class B digital device, pursuant to part 15 of the FCC Rules. These limits are designed to provide reasonable protection against harmful interference in a residential installation. This equipment generates, uses and can radiate radio frequency energy and, if not installed and used in accordance with the instructions, may cause harmful interference to radio communications. However, there is no guarantee that interference will not occur in a particular installation. If this equipment does cause harmful interference to radio or television reception, which can be determined by turning the equipment off and on, the user is encouraged to try to correct the interference by one or more of the following measures:

- Reorient or relocate the receiving antenna.
- Increase the separation between the equipment and receiver.
- Connect the equipment into an outlet on a circuit different from that to which the receiver is connected.
- Consult the dealer or an experienced radio/TV technician for help.

Changes or modifications not expressly approved by the party responsible for compliance could void the user's authority to operate the equipment.

This device complies with Part 15 of the FCC Rules. Operation is subject to the following two conditions:
(1) this device may not cause harmful interference, and (2) this device must accept any interference received, including interference that may cause undesired operation.

- 6 -