

尺寸：60x80mm
材质：105g铜版纸
装订方式：风琴方式

Smart Bulb User Manual



Setting Smart Life App

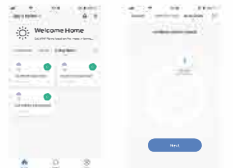
- 1.Download Smart Life from iOS APP Store or scan the QR code and install the Smart Life App for either iOS or Android.
- 2.Once downloaded, the app will ask you to register your device. Enter your phone number or email.
- 3.Click to get verification code, verification code will be sent to your email or phone.
- 4.Enter verification code to complete registration.



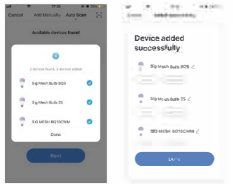
Connect with mobile phone

1. Turn on the mobile phone bluetooth function and ensure the mobile phone network is ON.
2. Open and log in the smart life APP, and tap the icon “+” on the top right corner of choose

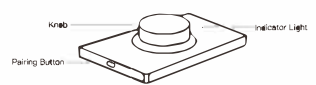
- your device type and enter “Add Device”.
3. Confirm light bulb is now rapidly flashing (2 times per second).



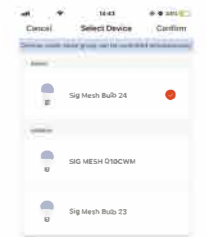
4. Click [automatic discovery], the phone will search the device automatically.
5. Follow the in-app instructions to connect the Smart Bulb to your bluetooth.



Remote control Method

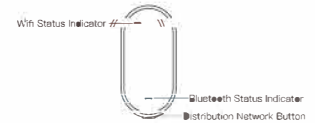


- Mode 1
1. Connect the lamp and remote control to the mobile phone respectively.
 2. Turn on the light and short press the remote control 1 time (within 10 seconds).The light will blink 3 times, which indicates successful pairing. Turn on the light and short press the remote control 2 time (within 10 seconds). The light will blink 3 times, which indicates successful pairing.
- Mode 2
- 1.Connect the lamp and remote control to the mobile phone respectively.
 - 2.Open and log in the smart life APP, and click the remote control to enter the page.
 - 3.Click ”configure remote control” to select the device to be controlled.



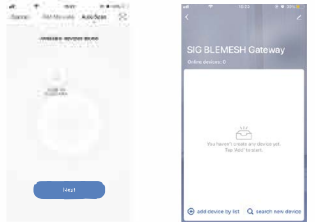
Please refer to the bluetooth remote control manual for detailed instructions.

Connect Bluetooth Gageway



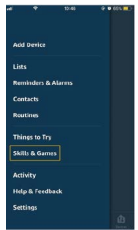
- 1.Turn on the Sig Blemesh gateway.
- 2.Tap the icon ”+” on the top right corner and choose your device type and enter“Add Device”.

- 3.Long press the distribution network key on the bluetooth gateway for 3 seconds,the red light flashes, and the gateway enters the distribution network state.
- 4.Tap [automatic discovery], the phone will search the device automatically.
- 5.After the distribution network is successful, click finish to jump to the control page of the gateway.
- 6.Tap ”add in the list” in the lower left corner to add devices with network distribution to the gateway.The added light can be controlled remotely.

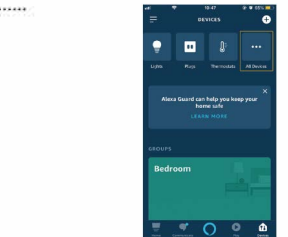


How to connect bulb to Alexa

- 1.Log in the smart life APP and configure the Sig Blemesh gateway with the mobile phone.
- 2.Add the device to the Sig Blemesh gateway, edit the device name.
- 3.Launch the Alexa App and sign in your Alexa account.
- 4.In the upper left corner of Home page, click (+) button to show APP menu. Then click (i) in the menu.
- 5.Type in ”Smart Life” in search and click the search button.



- 6.Enable Smart Life, then sign in your Smart Life account to complete the account linking.
- 7.When the connection is successful, exit the page and click the [DISCOVER DEVICE] button to find the device.
- 8.Click all devices on the “Devices” page, which shows all connected devices.
- 9.After the connection with Alexa, the device can be controlled by the following statements:
 - * Alexa, turn on my living room light
 - * Alexa, turn off my living room light
 - * Alexa, set bedroom light to cool white.



Attention

1. During use, ensure that the bluetooth function of the control device (mobile phone) is on.
2. This product is for indoor use only.

Warranty description

This product has one-year warranty fromthe day after signing. Please contact us if you have any questions orissues.



FCC ID: 2AKBP-BQ3CWM

FCC Statement

This equipment has been tested and found to comply with the limits for a Class B digital device, pursuant to part 15 of the FCC Rules. These limits are designed to provide reasonable protection against harmful interference in a residential installation. This equipment generates, uses and can radiate radio frequency energy and, if not installed and used in accordance with the instructions, may cause harmful interference to radio communications. However, there is no guarantee that interference will not occur in a particular installation. If this equipment does cause harmful interference to radio or television reception, which can be determined by turning the equipment off and on, the user is encouraged to try to correct the interference by one or more of the following measures:

- Reorient or relocate the receiving antenna.
- Increase the separation between the equipment and receiver.

- Connect the equipment into an outlet on a circuit different from that to which the receiver is connected.
- Consult the dealer or an experienced radio/TV technician for help.

Caution: Any changes or modifications to this device not explicitly approved by manufacturer could void your authority to operate this equipment.

This device complies with part 15 of the FCC Rules. Operation is subject to the following two conditions: (1) This device may not cause harmful interference, and (2) this device must accept any interference received, including interference that may cause undesired operation.

RF Exposure Information
This equipment complies with FCC radiation exposure limits set forth for an uncontrolled environment. This equipment should be installed and operated with minimum distance 20cm between the radiator & your body.