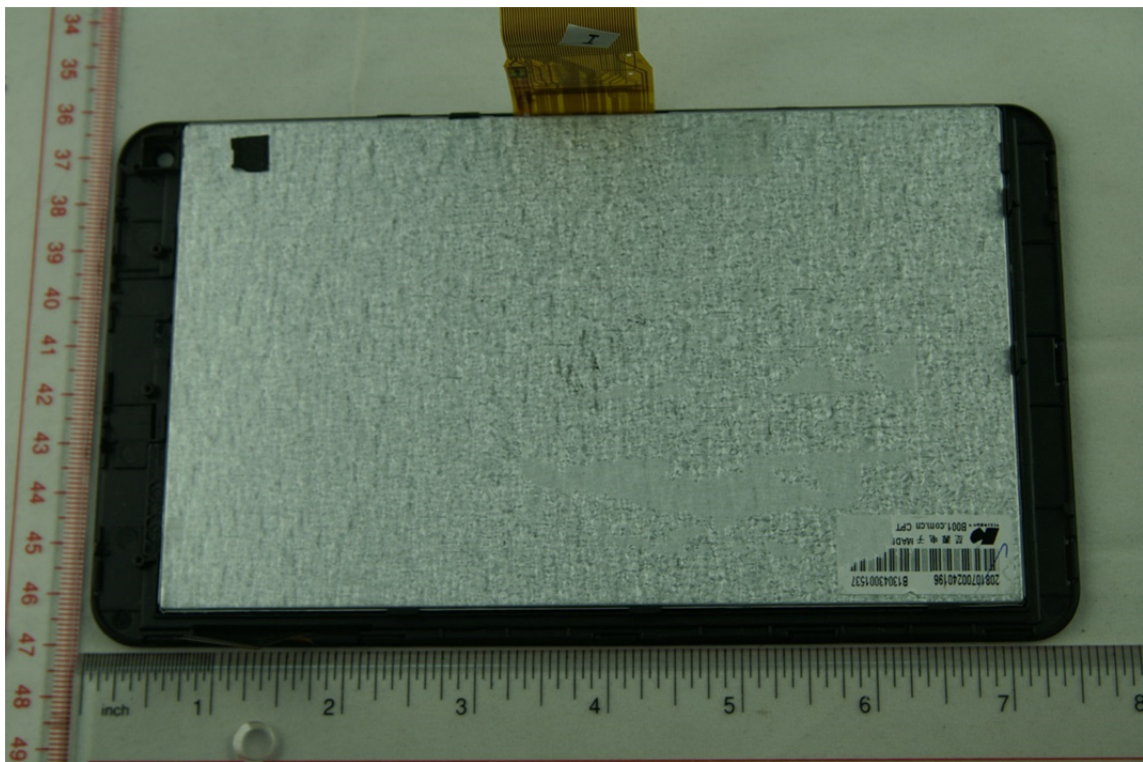


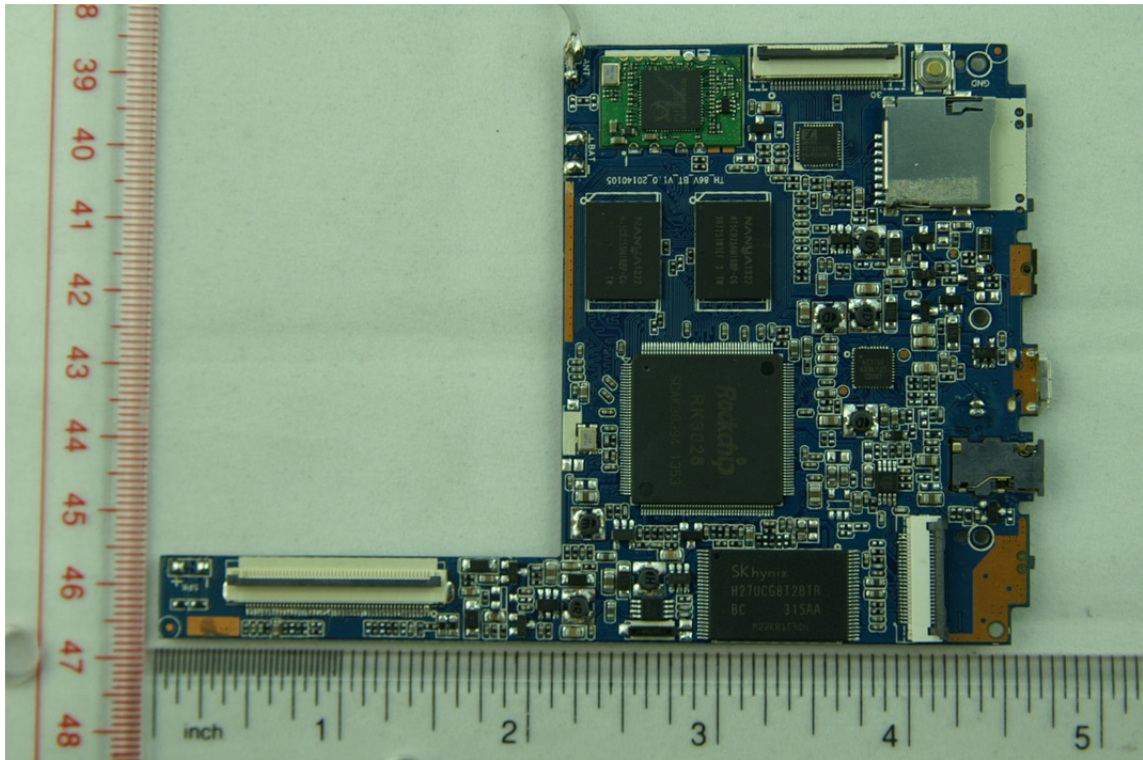
C.2 Inside of the EUT



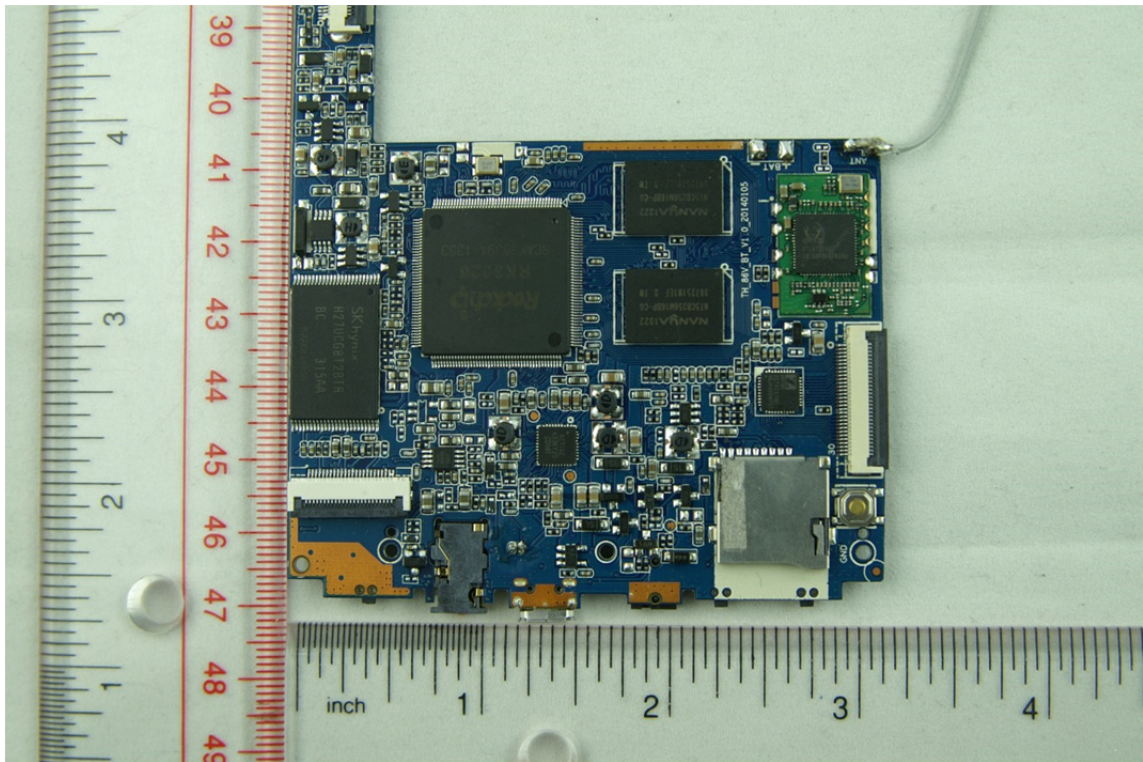
EUT Uncover View



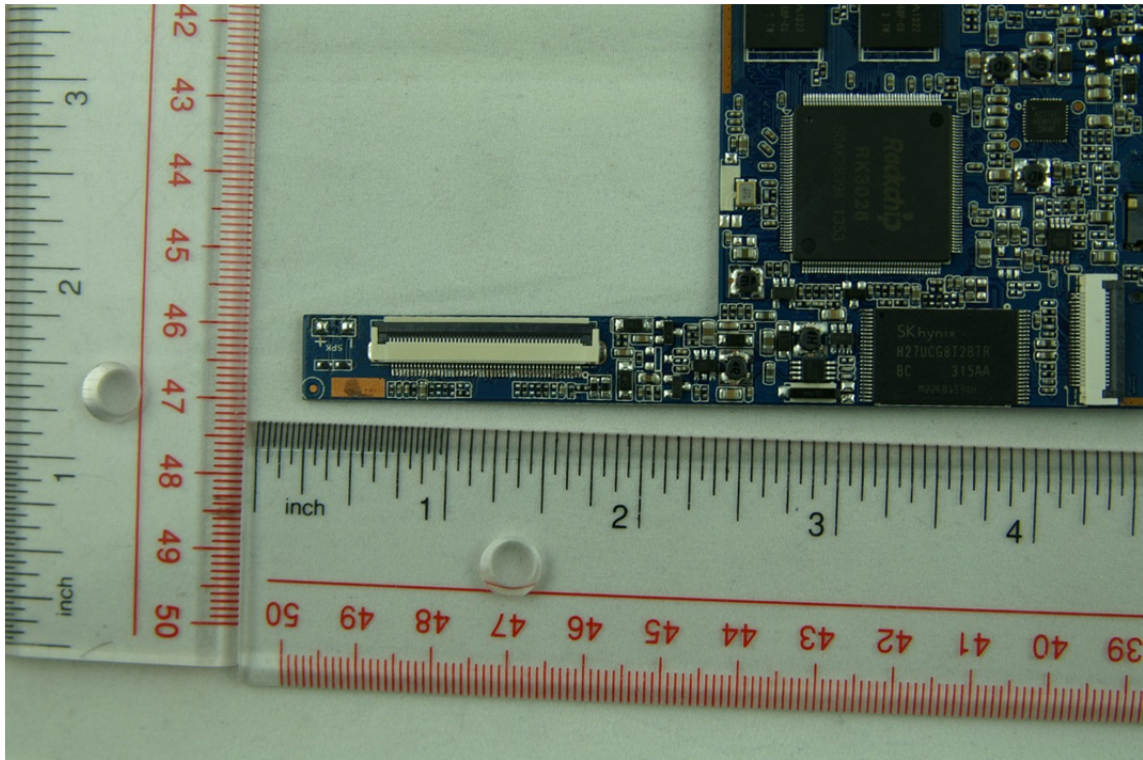
LED Display



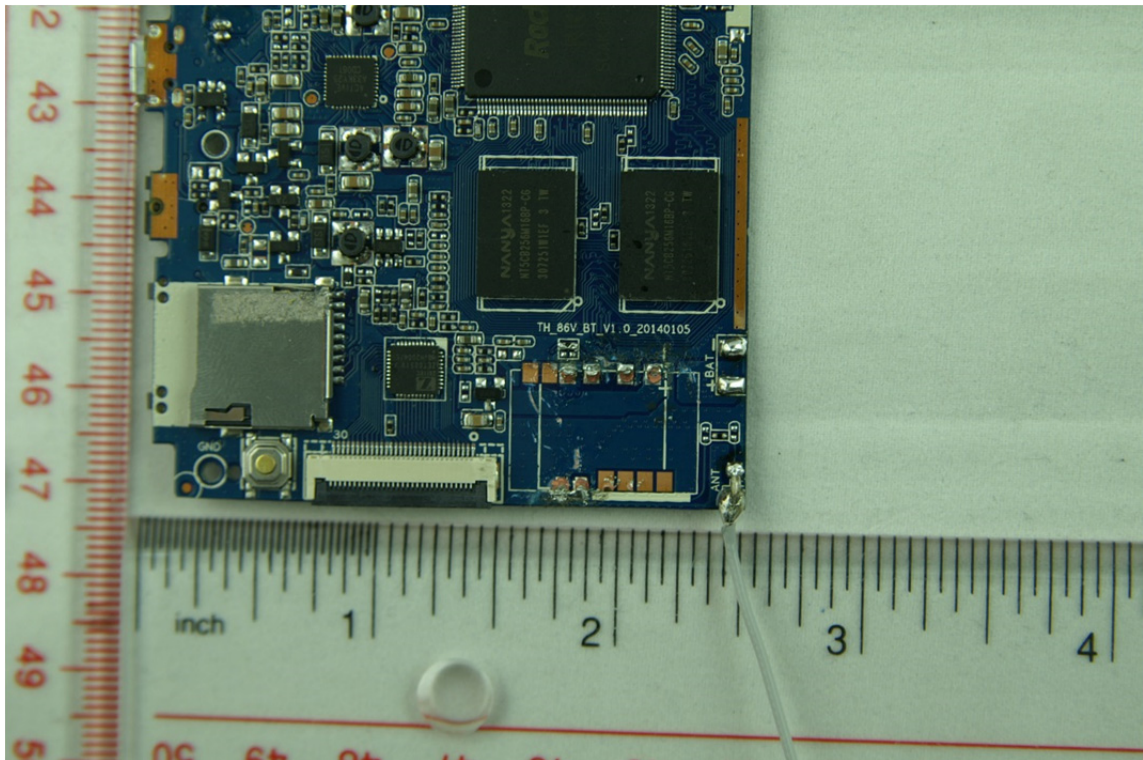
Main Board Top View 1



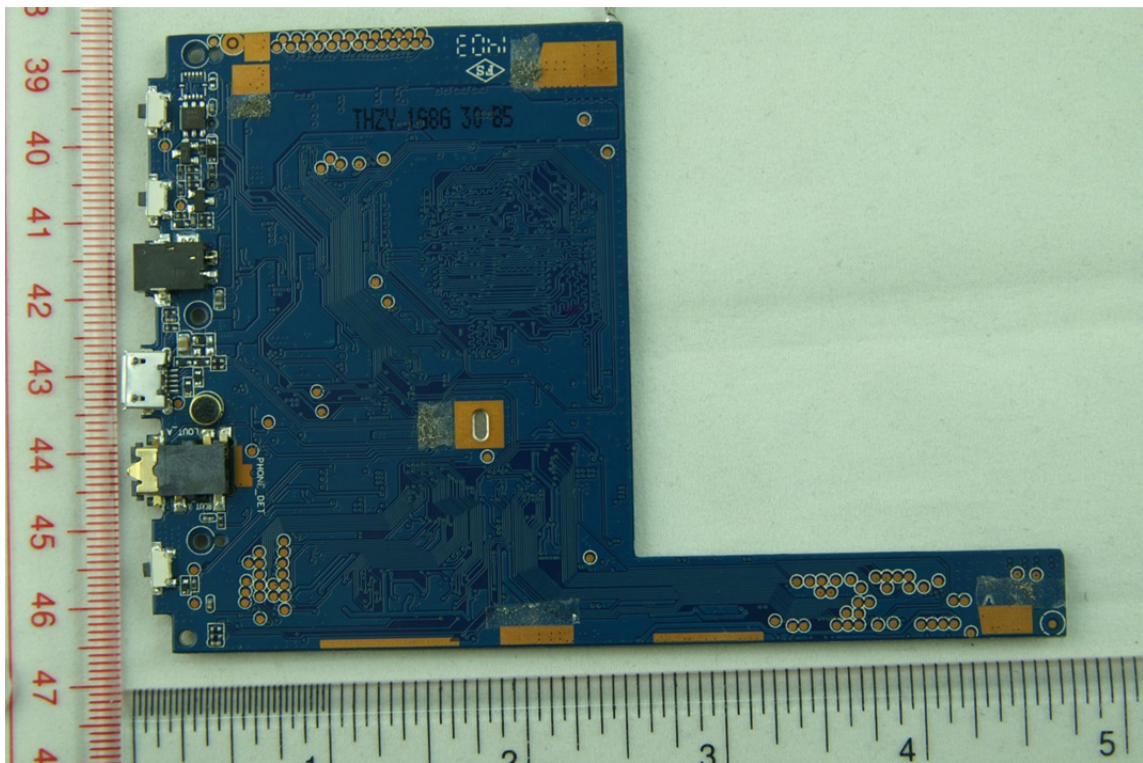
Main Board Top View 2



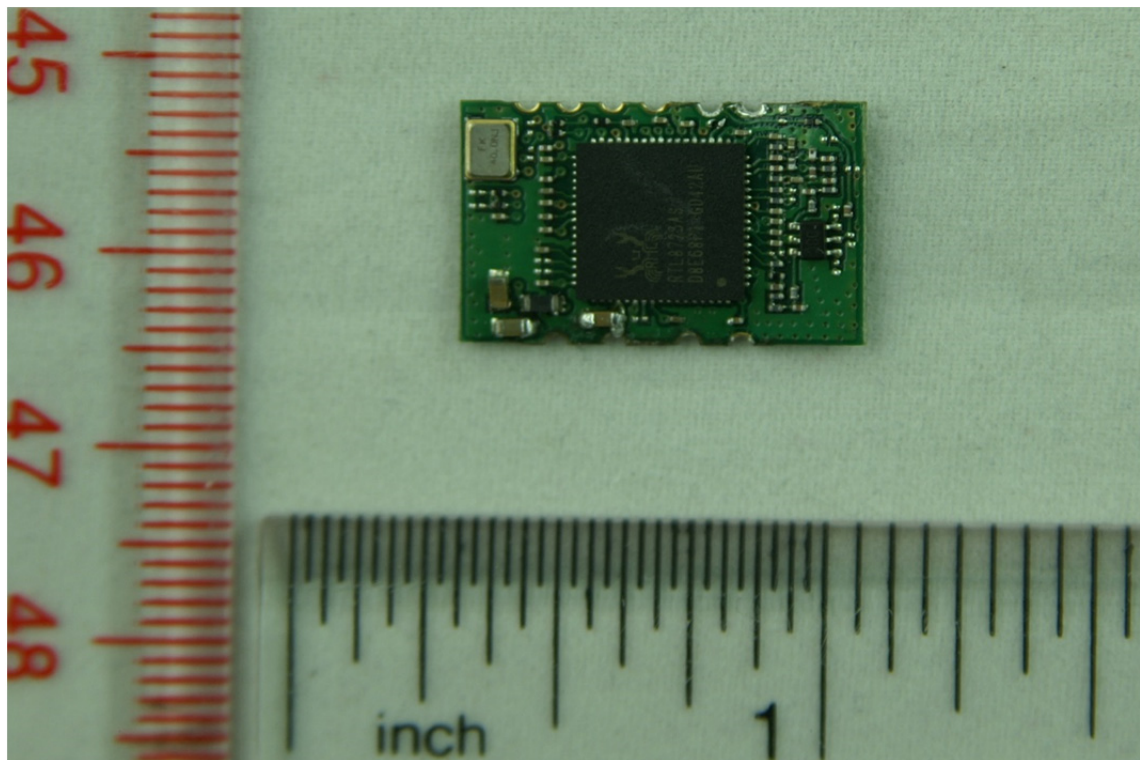
Main Board Top View 3



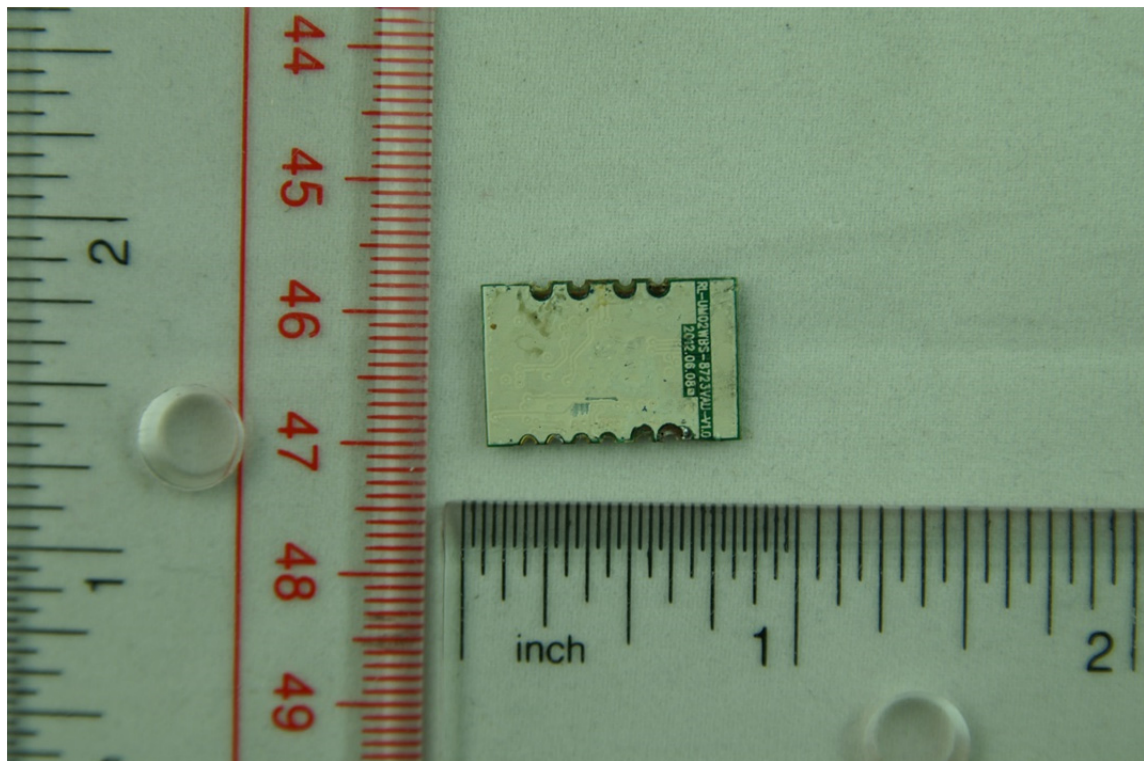
Main Board Top View 4



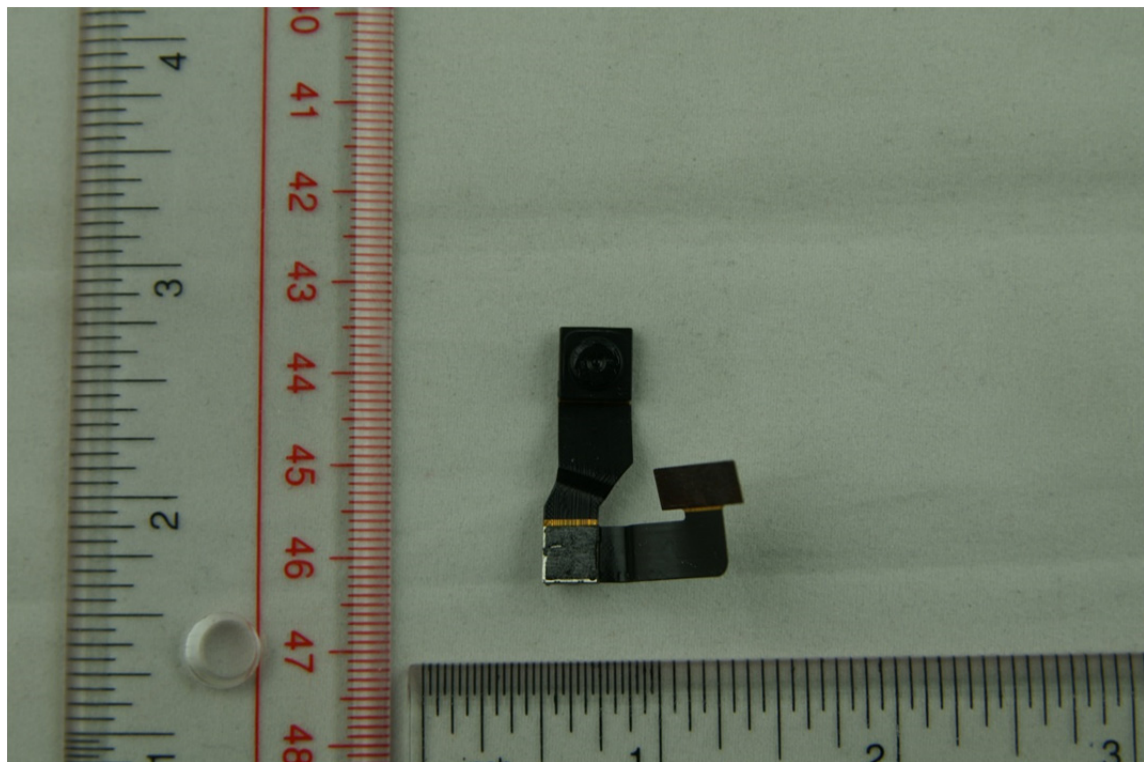
Main Board Back View



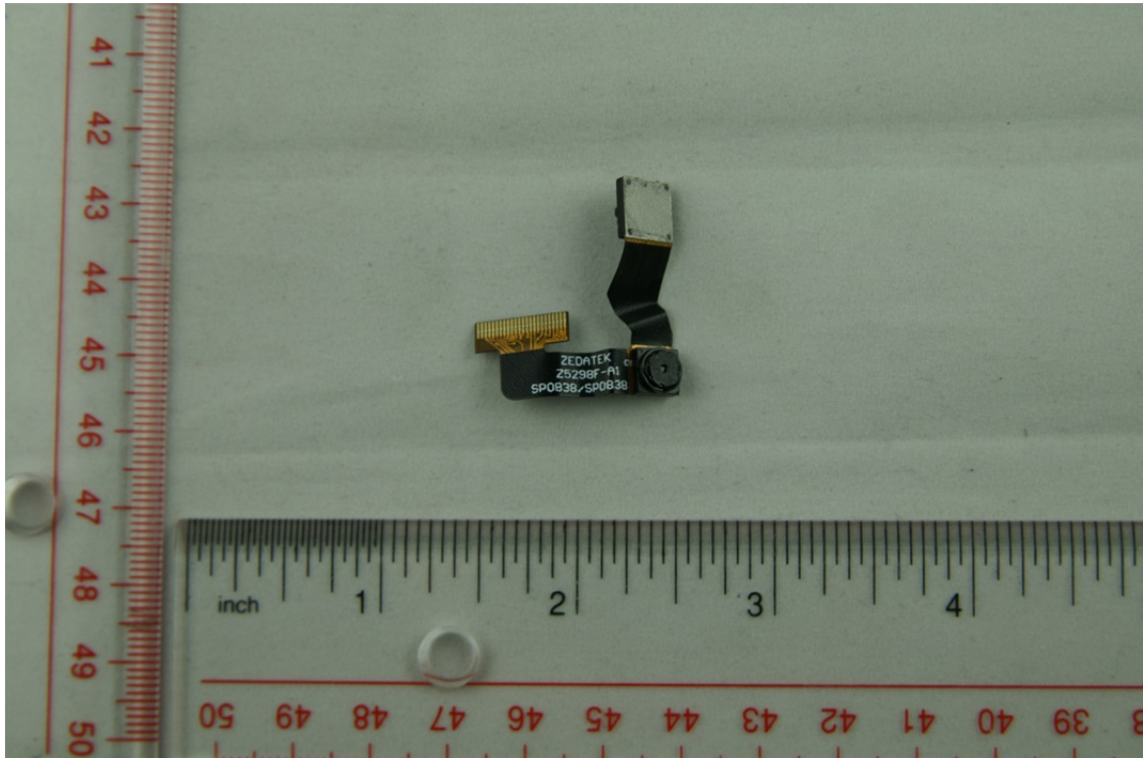
RF Module Top view



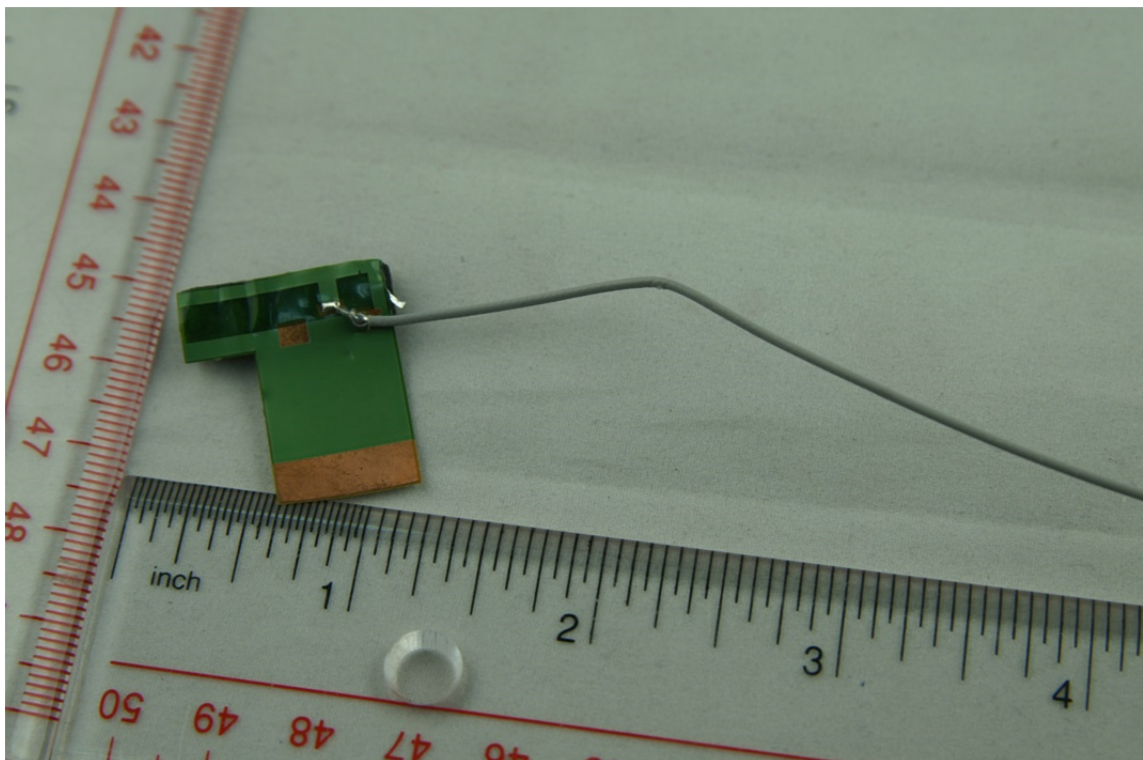
RF Module Back view



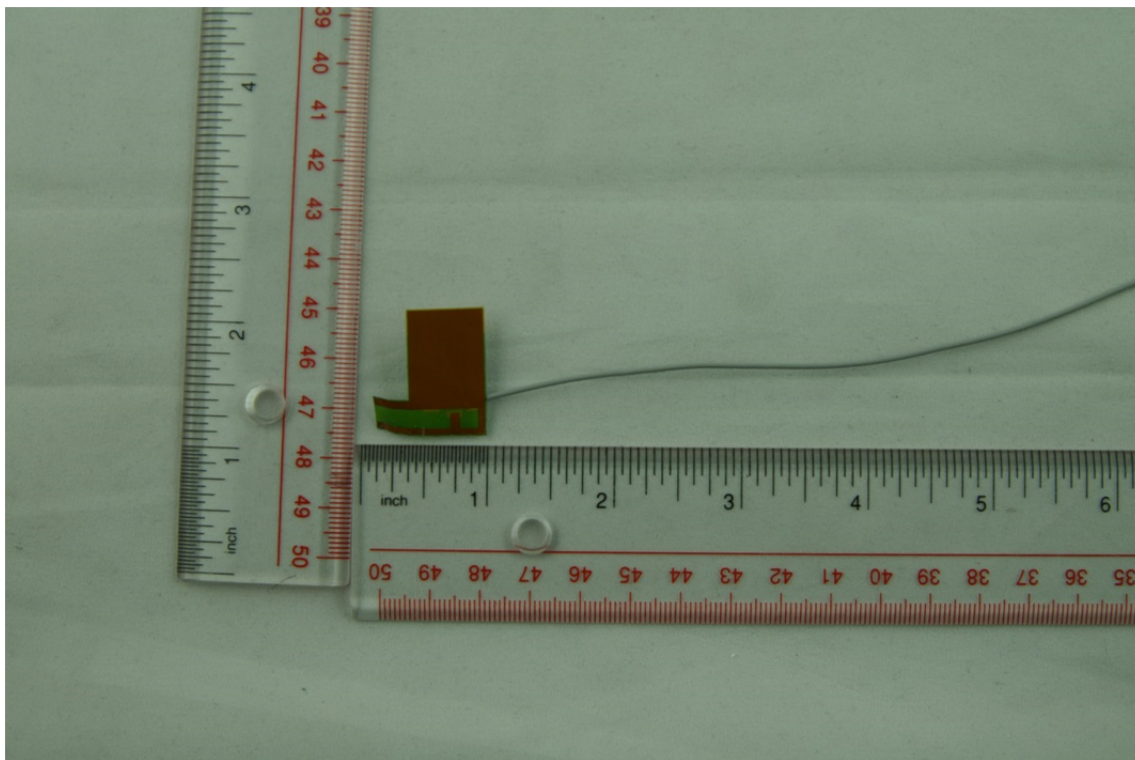
Camera View 1



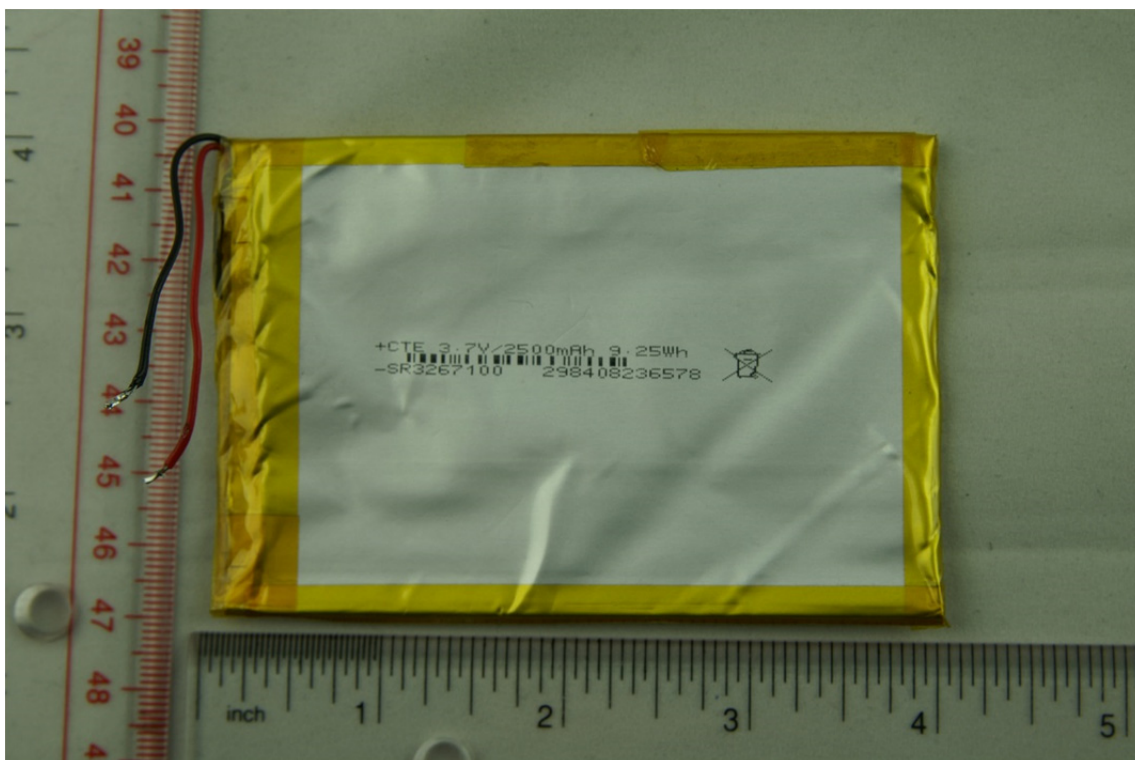
Camera View 2



Radio Transmitter Antenna Top view



Radio Transmitter Antenna Back view



EUT Battery