

ET-301 hygrothermograph



Scan and download APP. ➡



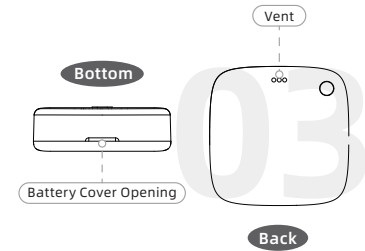
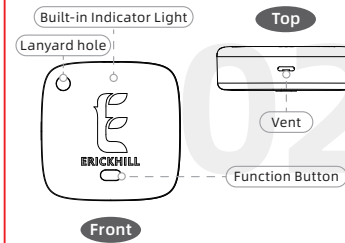
Specification

Temperature: $-10^{\circ}\text{C} \sim 50^{\circ}\text{C}$ ($\pm 0.5^{\circ}\text{C}$) / $14^{\circ}\text{F} \sim 122^{\circ}\text{F}$ ($\pm 32.9^{\circ}\text{F}$)
 Humidity: 20% ~ 99% RH ($\pm 5\%$)
 Battery Spec: 1 × 3V Button Battery (CR2045)
 Produce Size: 41 × 41 × 13 mm
 Packing List:
 ET-301 × 1; Lanyard × 1; User Manual × 1

Note:

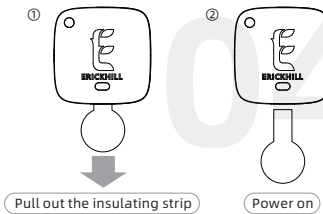
- 1) Do not expose the device to water, not place it in a high temperature environment exceeding 60°C , and keep it away from fire.
- 2) The device is a precision measuring instrument, and it is not allowed to disassemble it without authorization.
- 3) Do not place the device in an environment full of dust or corrosive gas for measurement.

Product Introduction

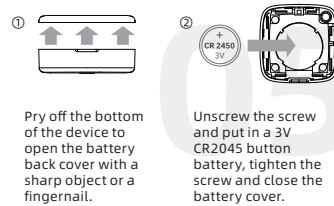


Operation

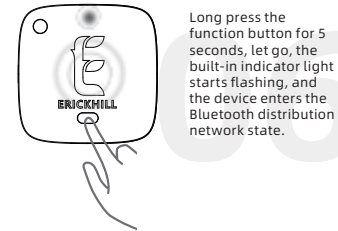
First Boot



Replace The Battery



Distribution Network Mode

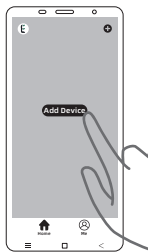


Long press the function button for 5 seconds, let go, the built-in indicator light starts flashing, and the device enters the Bluetooth distribution network state.

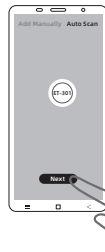
How To Connect To APP



- ① Turn on the network configuration function of the device, then turn on Bluetooth, and cation services in your phone.



- ② Click the "Home" at the bottom, and click the "+" in the upper right corner or the "Add Device" button in the middle.



- ③ Click "Auto Scan" to scan and select the device to be searched, then click next.

Note:
In addition to the "Auto Scan" mode, you can also click "Add Manually" and follow the path "XXXX" to click on the corresponding icon and operate as prompted on the interface.

1 year warranty against any manufacturing defects or faulty workmanship. This warranty does not cover fuses, disposable batteries or damage from accident, neglect, misuse, alteration, contamination or abnormal conditions of operation or handling.



WEEE Directive 2012/19/EU At the end of the product life, dispose of the instrument & batteries in a corresponding recycling centre. Do not dispose of the unit with the usual domestic refuse. Do not burn the product.

1 YEAR
GUARANTEE
Made in China



EC REP

C&E Connection E-Commerce (DE) GmbH
Address: Zum Linnegraben 20, 65933, Frankfurt am Main, Germany
Email: info@ce-connection.de
Tel: +49 (0)69 27246648

UK REP

UK Authorized Representative
Address: 13 Quad Road, East Lane Business Park, Wembley HA9 7NE
Email: e2ukltd@gmail.com
Tel: +44 7429848355

Warning: Changes or modifications to this unit not expressly approved by the party responsible for compliance could void the user's authority to operate the equipment.

NOTE: This device complies with part 15 of the FCC Rules. Operation is subject to the following two conditions: (1) This device may not cause harmful interference, and (2) this device must accept any interference received, including interference that may cause undesired operation.

FCC Statement: This equipment has been tested and found to comply with the limits for a Class B digital device, pursuant to part 15 of the FCC Rules. These limits are designed to provide reasonable protection against harmful interference in a residential installation. This equipment generates, uses and can radiate radio frequency energy and, if not installed and used in accordance with the instructions, may cause harmful interference to radio communications. However, there is no guarantee that interference will not occur in a particular installation. If this equipment does cause harmful interference to radio or television reception, which can be determined by turning the equipment off and on, the user is encouraged to try to correct the interference by one or more of the following measures:

- Reorient or relocate the receiving antenna.
- Increase the separation between the equipment and receiver.
- Connect the equipment into an outlet on a circuit different from that to which the receiver is connected.
- Consult the dealer or an experienced radio/TV technician for help.