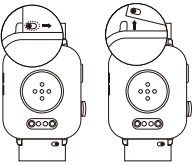


Quick Start Guide (EN)

R30Pro Smart Watch

Disassemble/assemble watchband

Please refer to the following figures, disassemble the watchband by rotating its pin button and lifting the watchband to remove it, and then release the pin button. And you can assemble a new watchband by operating in reverse procedures.



1



Charging voltage: 5V
Screen Size: 1.85 inch
Charging time: 2 hours
Battery capacity: 280 mAh
Battery life: 5-6 days
Waterproof: 10M
Bluetooth version: BLE5.2
Screen material: B0E Glass
Strap width: 20mm
Operating temperature: -10°C-40°C

2

Control Your Watch

● Power Button

Press

- Wake the screen
- Return to the home screen
- Enter the menu interface

● Sport Button

Press

- Wake the screen
- Enter/Exit the sport interface
- Pause/Resume the sport

● Touch Screen

- Hold the home screen to change the watch face
- Swipe to go to different interfaces
- Tap to enter the function
- Swipe the screen to the right to return to the previous interface

Note:

The distance between the mobile phone and the watch shall be kept less than 10 meters please. And please refresh the interface of the APP if disconnection.



3

Using Your Watch

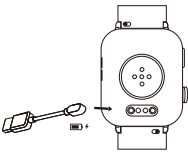
● Charging

Before using your R30Pro for the first time, charge the battery to its full capacity. It is recommended to use a conventional charger above 5V for charging, not the USB interface at the computer terminal.

Place the magnetic charger on the magnetic charging points of the watch.

While your watch is charging, the screen will show its progress.

Once the battery is fully charged, remove the charger.



4

② Install Da Fit App on your smartphone

You can download Da Fit App from Apple Store/Google Play or scan the QR codes Right to download

③ Device Binding



④ Open the app and click on "ADD A Device"



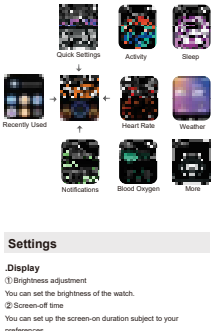
5



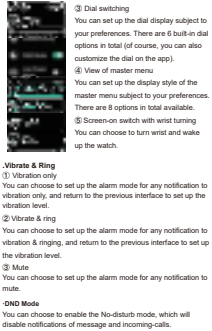
Note:

Only when your watch is connected to the Da Fit App, the App is running on your phone, and "Notification Alerts" is enabled in the app, will messages be notified.

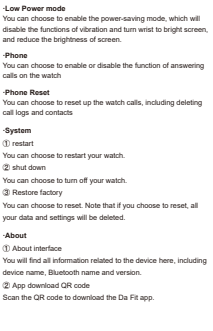
6



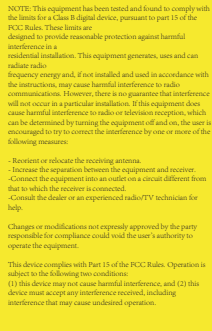
7



8



9



10