

215.9mm

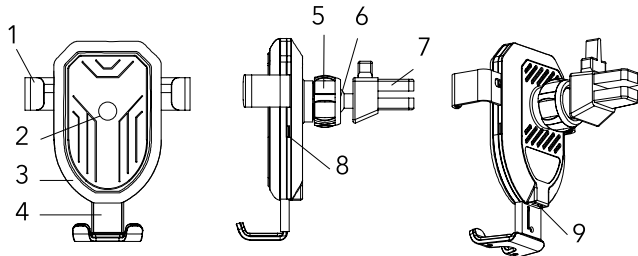


WIRELESS CAR CHARGER  
Instruction Manual

WD-234A

PARTS INCLUDED

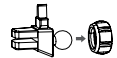
- Device holder
- Wireless charger
- Vent mount
- Suction mount



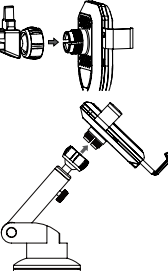
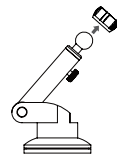
COMPONENT IDENTIFICATION

1. Clip
2. Charging coil
3. Charger
4. Bottom clip
5. Tightening knob
6. Ball joint
7. Air vent clip
8. Charging LED
9. Micro USB port

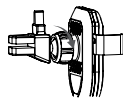
INSTALLATION



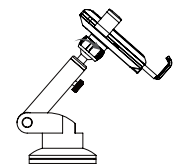
Place the screw cap (threads facing up) over the mount's ball joint.



Align the device holder over the mount's ball joint.



Snap the device holder onto the mount's joint, you will hear a "snap" when it is properly connected.

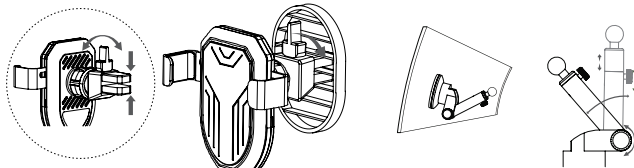


Place the holder onto the air vent or wind shield as desired.

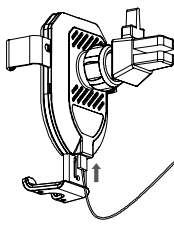
Adjust as necessary.



Adjust the bottom clip to ensure the wireless charging pad is in the correct place on your device.



Air vent clip and suction mount can be adjusted to the optimum angle for your vehicle.



Connect to charge

UNDERSTANDING THE LED LIGHTS

- Green LED ON—Charging
- Green LED OFF—Standby
- Blinking LED—Foreign object in charger
- Blinking LED—Overheat warning
- Blinking LED—Voltage too high

WARNING

- DO NOT put metal objects on charger
- Keep charger dry
- Use only as specified in this manual
- DO NOT use if damaged
- DO NOT charge with a damaged, broken or exploded battery
- DO NOT use or under 0°C or over 30°C
- DO NOT store in frigid temperatures to avoid moisture build up inside the charger
- DO NOT open or repair
- DO NOT throw, beat or shake to avoid internal damage

SPECIFICATIONS

- Charging modes: 5W/7.5W/10W
- Input: 5V/2A; 9V/1.67A
- Charging distance: <0.2" (5mm)
- Efficiency: 75%
- Size: 4.33x3.8x2.13in
- FCC ID: ZBCWD234A

Qualcomm Quick Charge is a product of Qualcomm Technologies, Inc., and/or its subsidiaries.  
Qualcomm is a trademark of Qualcomm Incorporated, registered in the United States and other countries. Quick Charge is a trademark of Qualcomm Incorporated.

NOTE: This equipment has been tested and found to comply with the limits for a Class B digital device, pursuant to part 15 of the FCC Rules. These limits are designed to provide reasonable protection against harmful interference in a residential installation. This equipment generates uses and can radiate radio frequency energy and, if not installed and used in accordance with the instructions, may cause harmful interference to radio communications. However, there is no guarantee that interference will not occur in a particular installation. If this equipment does cause harmful interference to radio or television reception, which can be determined by turning the equipment off and on, the user is encouraged to try to correct the interference by one or more of the following measures:

- Reorient or relocate the receiving antenna.
- Increase the separation between the equipment and receiver.
- Connect the equipment into an outlet on a circuit different from that to which the receiver is connected.
- Consult the dealer or an experienced radio/TV technician for help

Changes or modifications not expressly approved by the party responsible for compliance could void the user's authority to operate the equipment.

This device complies with Part 15 of the FCC Rules. Operation is subject to the following two conditions:

- (1) this device may not cause harmful interference, and
- (2) this device must accept any interference received, including interference that may cause undesired operation.

RF Exposure Warning Statements:

This equipment complies with FCC radiation exposure limits set forth for an uncontrolled environment. This equipment shall be installed and operated with minimum distance 20cm between the radiator & body.

Please Recycle

297mm