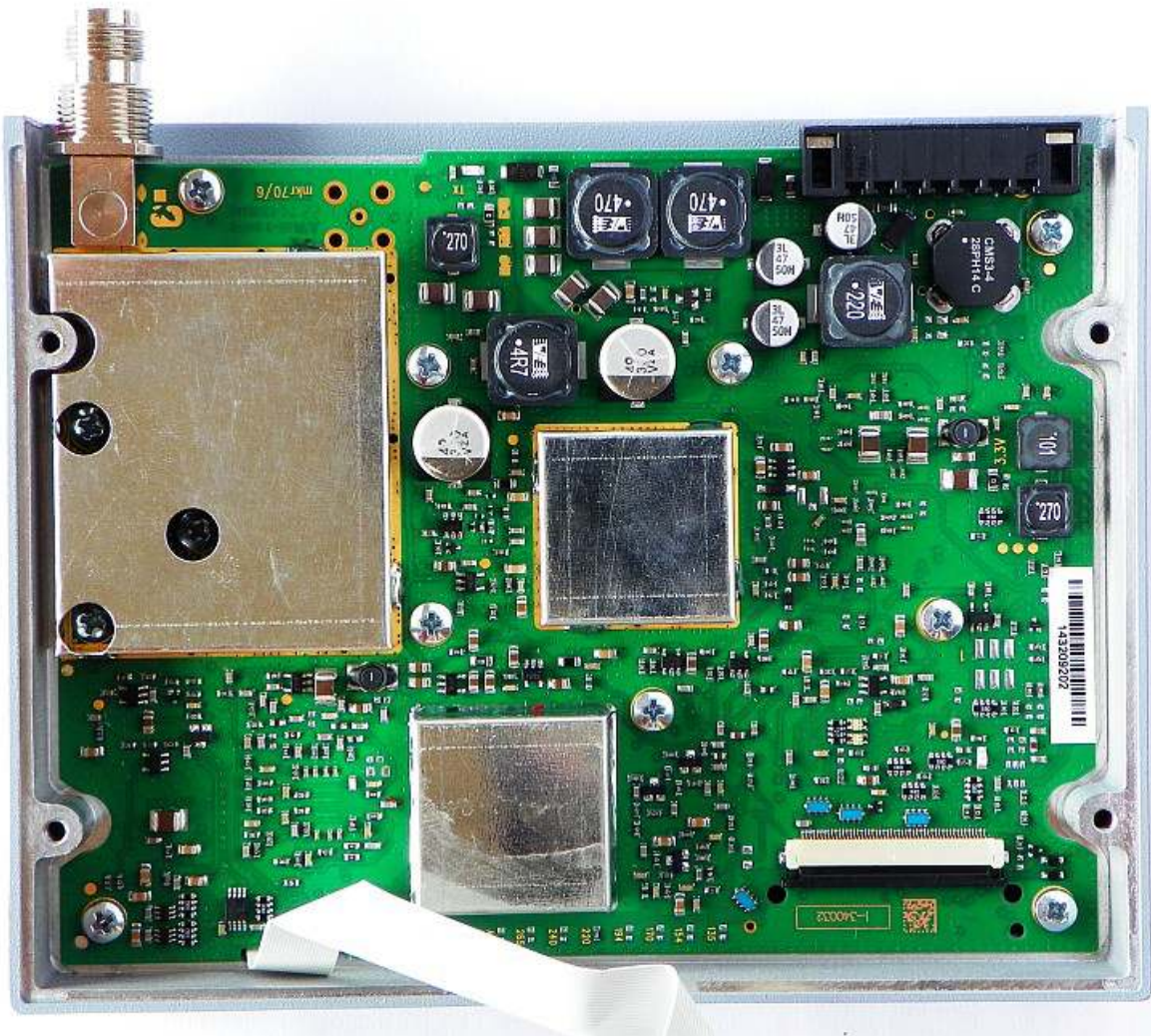


Photographs Of Equipment

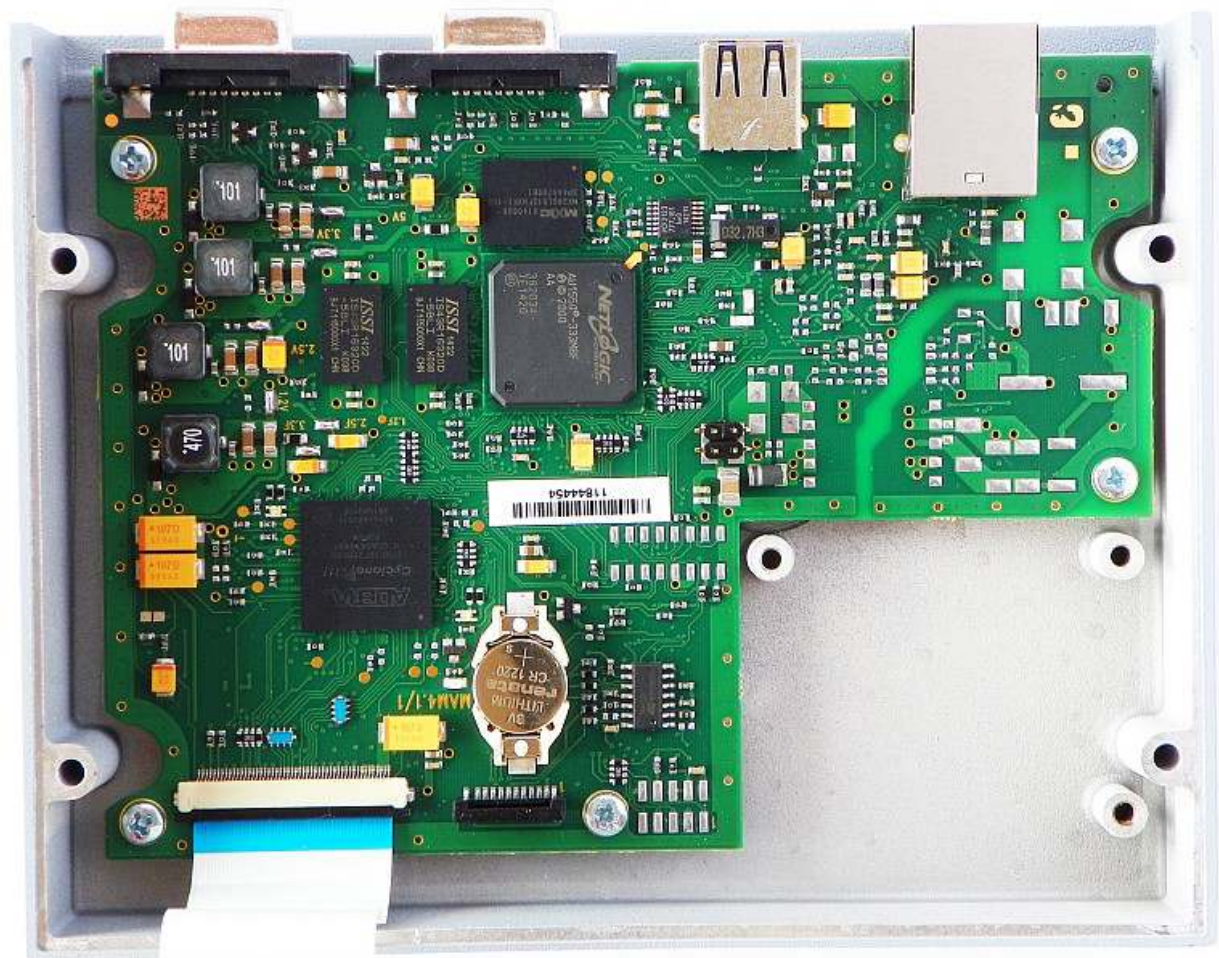
List of photographs:

PHOTOGRAPH 1: Unit No. 4 top internal view	2
PHOTOGRAPH 2: Unit No. 4 bottom internal view	3
PHOTOGRAPH 3: Unit No. 4 top view of the lower circuit board	4
PHOTOGRAPH 4: Unit No. 4 bottom view of the lower circuit board	5
PHOTOGRAPH 5: Unit No. 4 top view of the upper circuit board.....	6
PHOTOGRAPH 6: Unit No. 4 bottom view of the upper circuit board.....	7

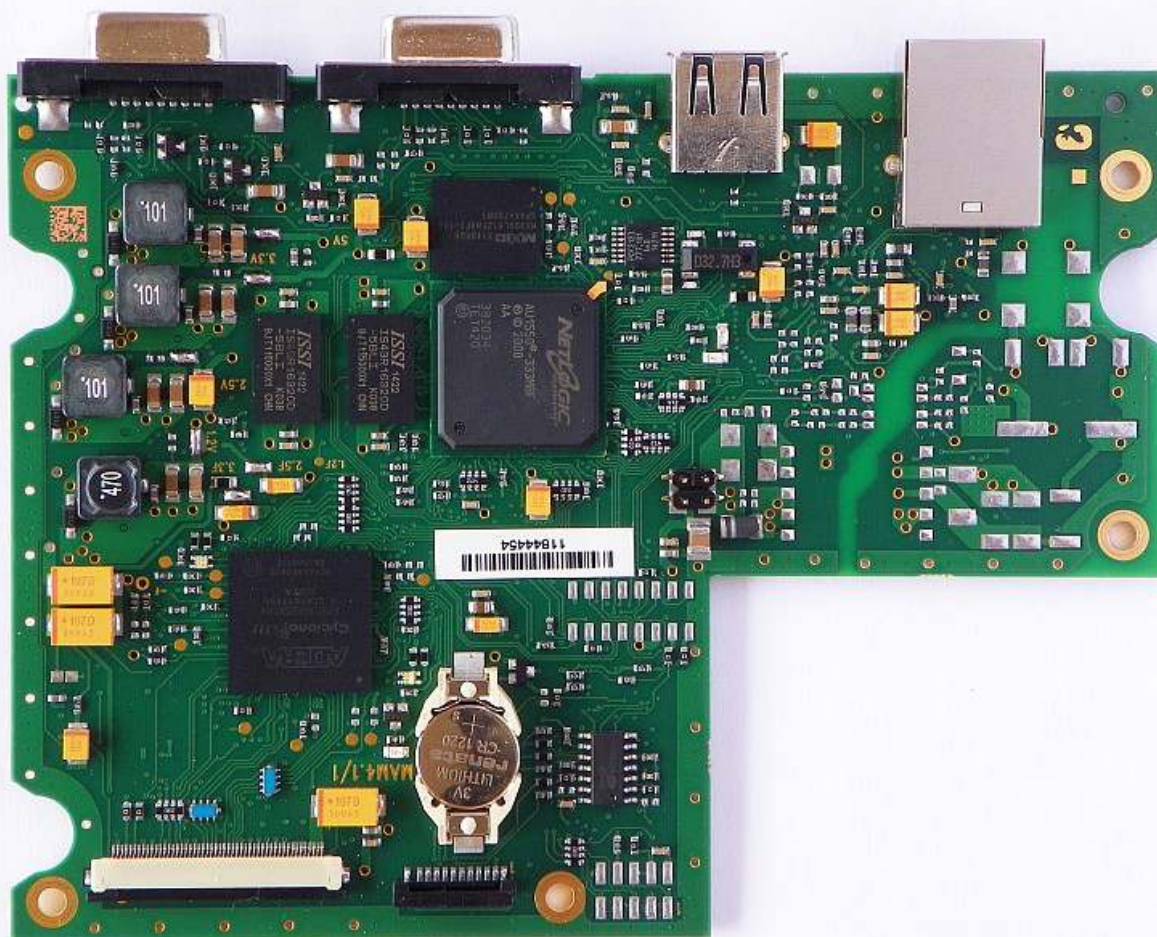
PHOTOGRAPH 1: Unit No. 4 top internal view



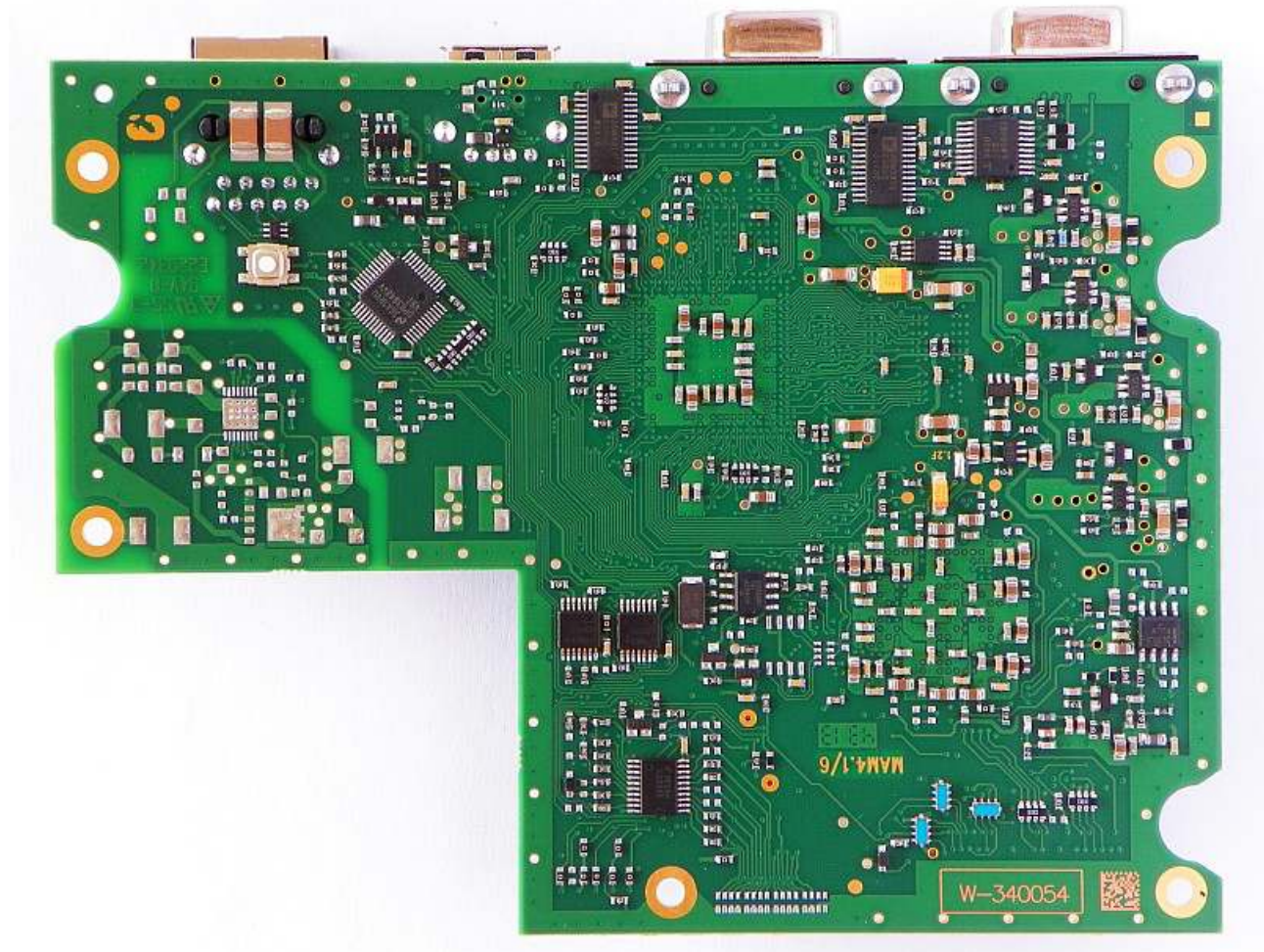
PHOTOGRAPH 2: Unit No. 4 bottom internal view



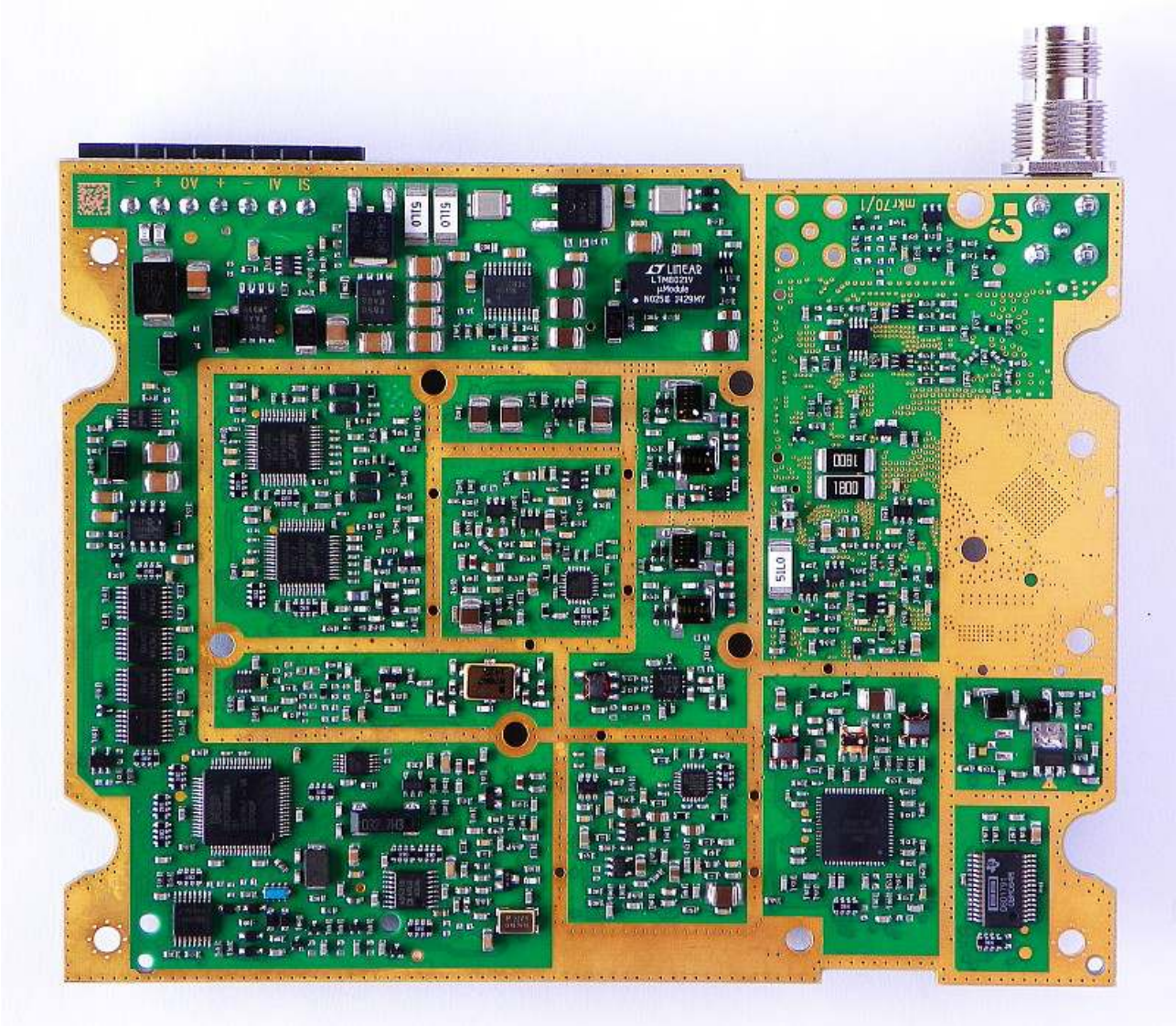
This image shows the internal mainboard of a handheld electronic device. The green printed circuit board (PCB) is populated with numerous electronic components. Key components include several integrated circuits (chips) such as the MT6800 (likely the CPU), ISSI memory chips, and MCP (Microcontroller Peripheral Component) chips. There are also various passive components like electrolytic capacitors (labeled 101, 470), resistors, and a coin-cell battery (CR1220). Connectors for external devices and a ribbon cable are visible along the edges. A barcode sticker is present near the center of the board.



PHOTOGRAPH 4: Unit No. 4 bottom view of the lower circuit board



PHOTOGRAPH 5: Unit No. 4 top view of the upper circuit board



PHOTOGRAPH 6: Unit No. 4 bottom view of the upper circuit board

