

# Host Unit Antenna Information

## 1. Antenna Assembly Overview

Note 1) 1a. *Includes all cable losses.*

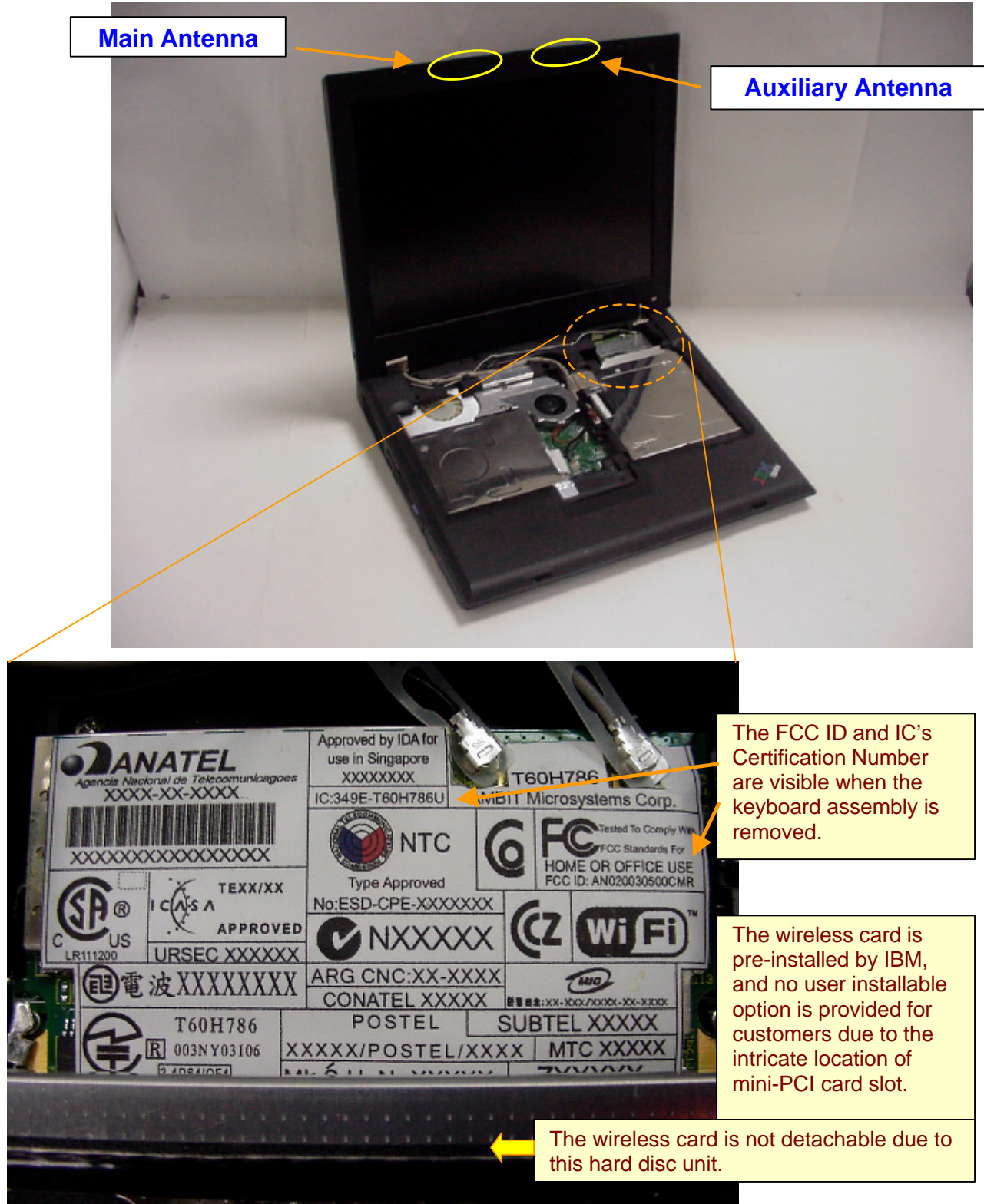
1b. *Antenna type should be Omni Directional.*

### IBM ThinkPad G40 Series

Designator	Manufacture	Antenna type	Cable type and length	Gain (dBi) Note 1)		
R0222-099 Main antenna	SmartAnt Telecom Co., Ltd. (R.O.C.)	Dual Band Meander (Inverted F) Antenna	coax 570mm	14"	2.4GHz band -0.25 dBi (peak)	
				15"	2.4GHz band 0.18 dBi (peak)	
R0222-100 Auxiliary antenna			coax 610mm	14"	2.4GHz band 0.87 dBi (peak)	
				15"	2.4GHz band 0.52 dBi (peak)	

## 2. Host PC Information

The two meander (Inverted F type) antennas are built in the top LCD bezel. Those diversity antennas are not used simultaneously. One of the antennas is selected automatically or manually to have a good quality of radio communication. The selected antenna performs transmission or receiving in half duplex alternatively.



**IBM ThinkPad G40 Series, LCD 14 inch Model**

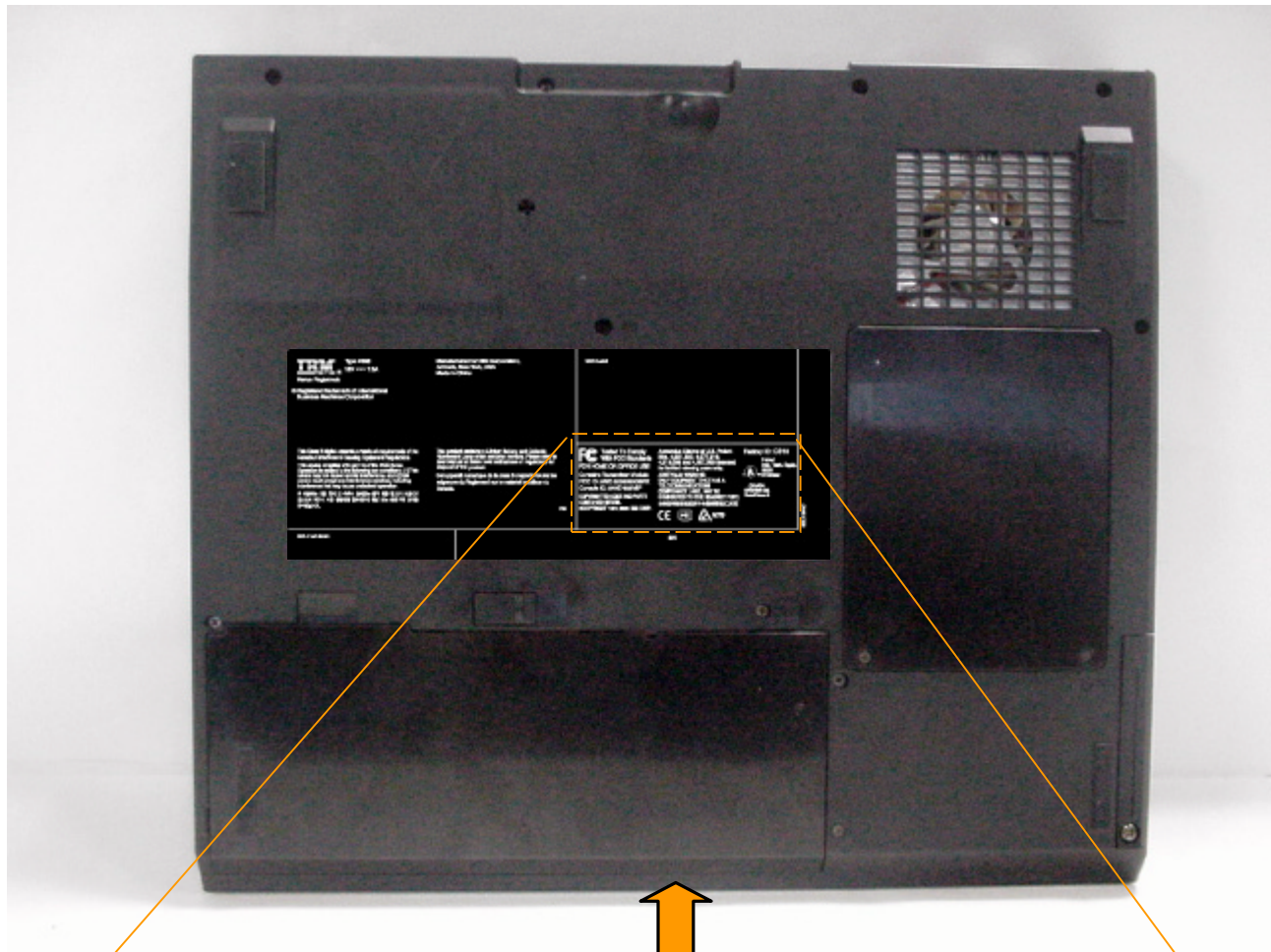


**IBM ThinkPad G40 Series, LCD 15 inch Model**





### 3. Host PC Labeling



Bottom view, Front side

**FC** Tested To Comply  
With FCC Standards  
FOR HOME OR OFFICE USE  
Contains Transmitter Module  
FCC ID: ANO20030500CMR  
Canada IC: 349E-T60H786U  
COPYRIGHTED CODE AND PARTS  
CONTAINED HEREIN.  
©COPYRIGHT 1981, 2004 IBM CORP.

Apparatus Claims of U.S. Patent  
Nos. 4,631,603, 4,577,216,  
4,819,098 and 4,907,093 licenced  
for limited viewing uses only.  
AUSTRALIA WARNING:  
ONLY EQUIPMENT THAT HAS A  
TELECOMMUNICATIONS  
COMPLIANCE LABEL MAY BE  
CONNECTED TO THE HEADSET PORT.

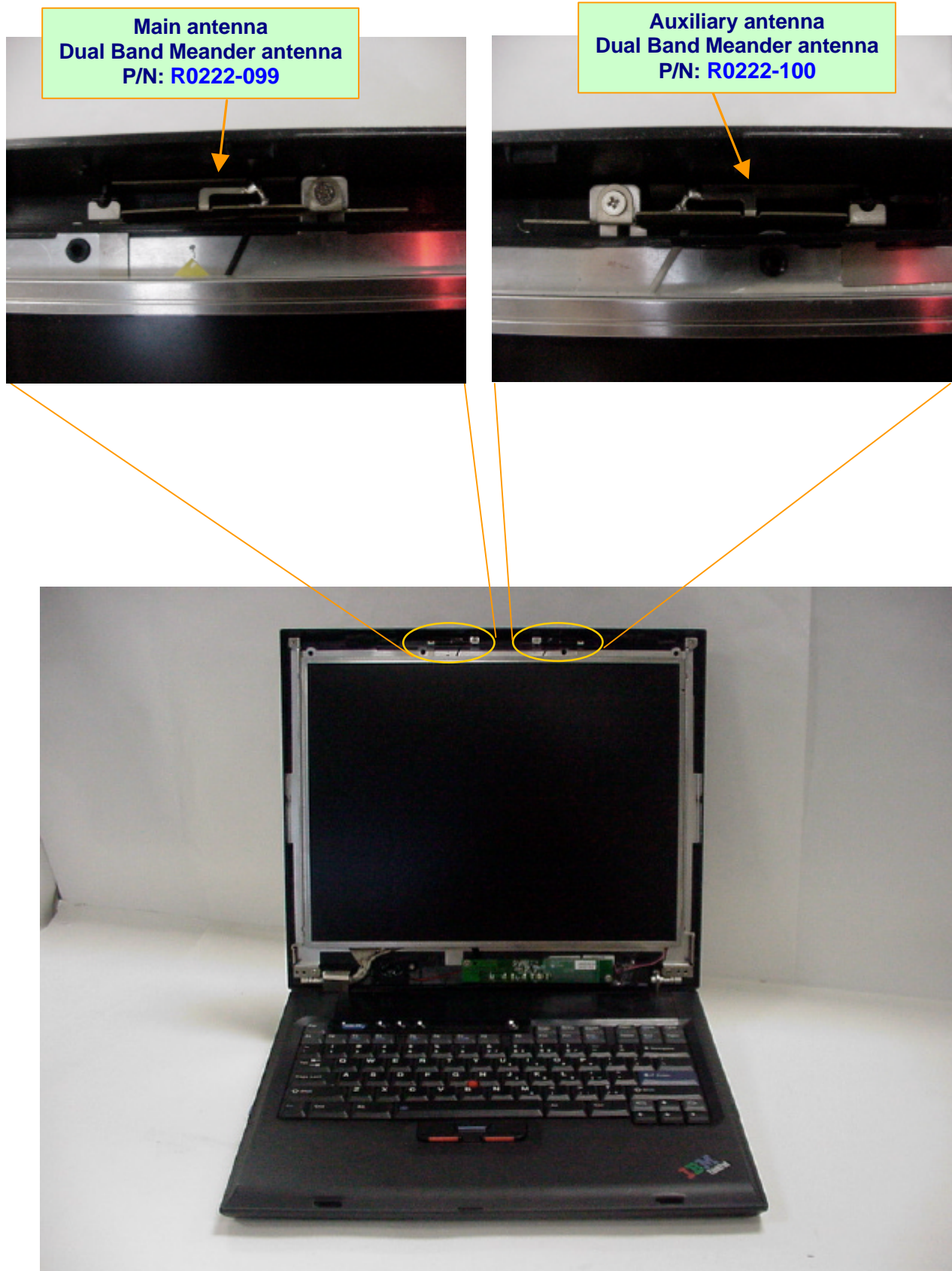


Factory ID: AF10



CANADA  
ICES/NMB-003  
Class/Classe B

## 4. Antenna Locations





## 5. Exterior Photos of Antennas

