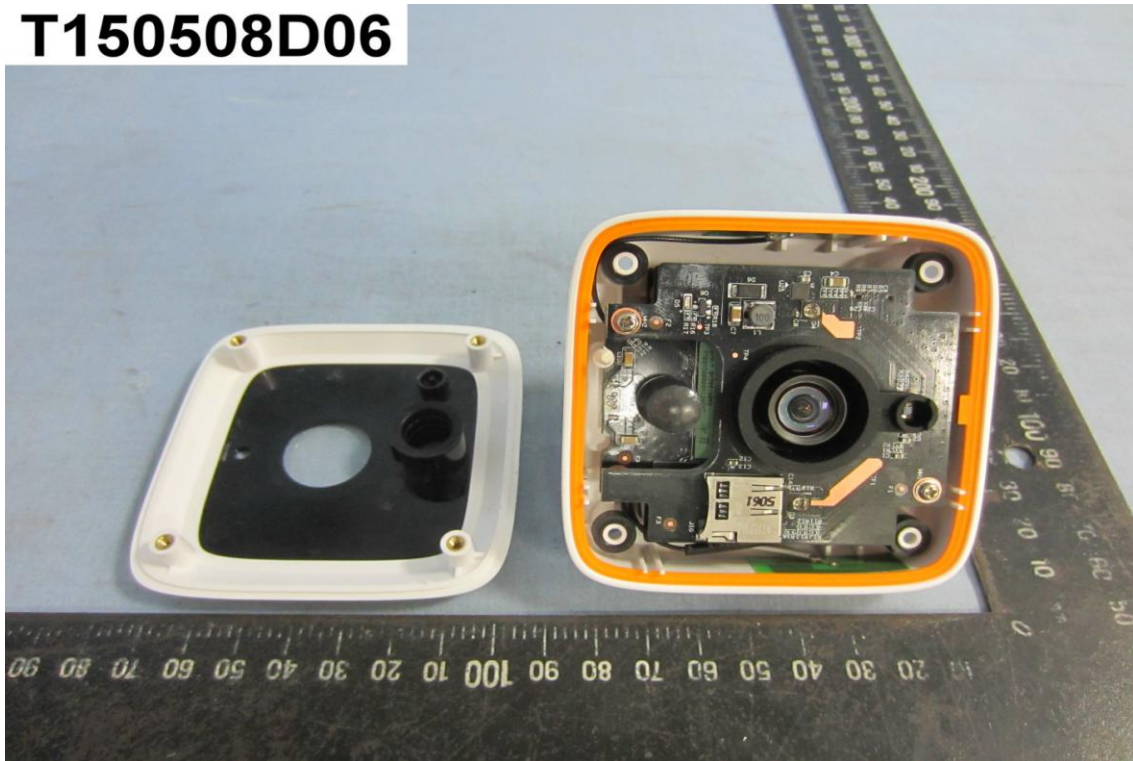
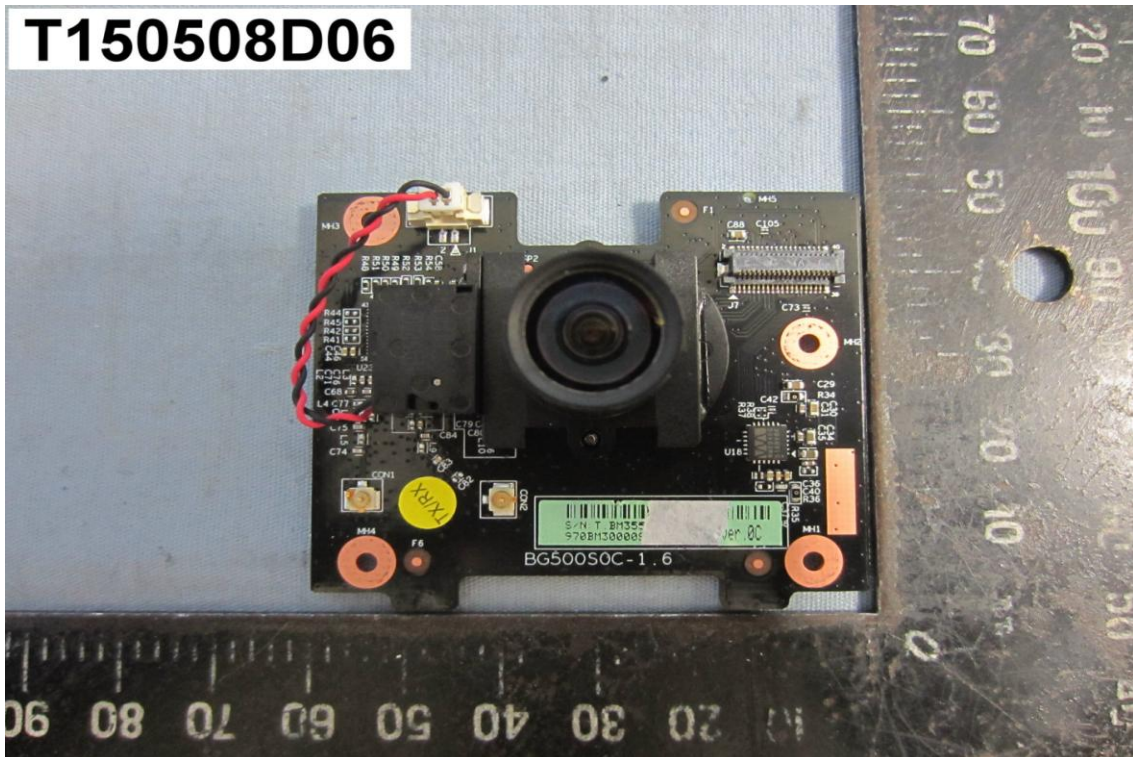


## INTERNAL PHOTOGRAPHS OF EUT

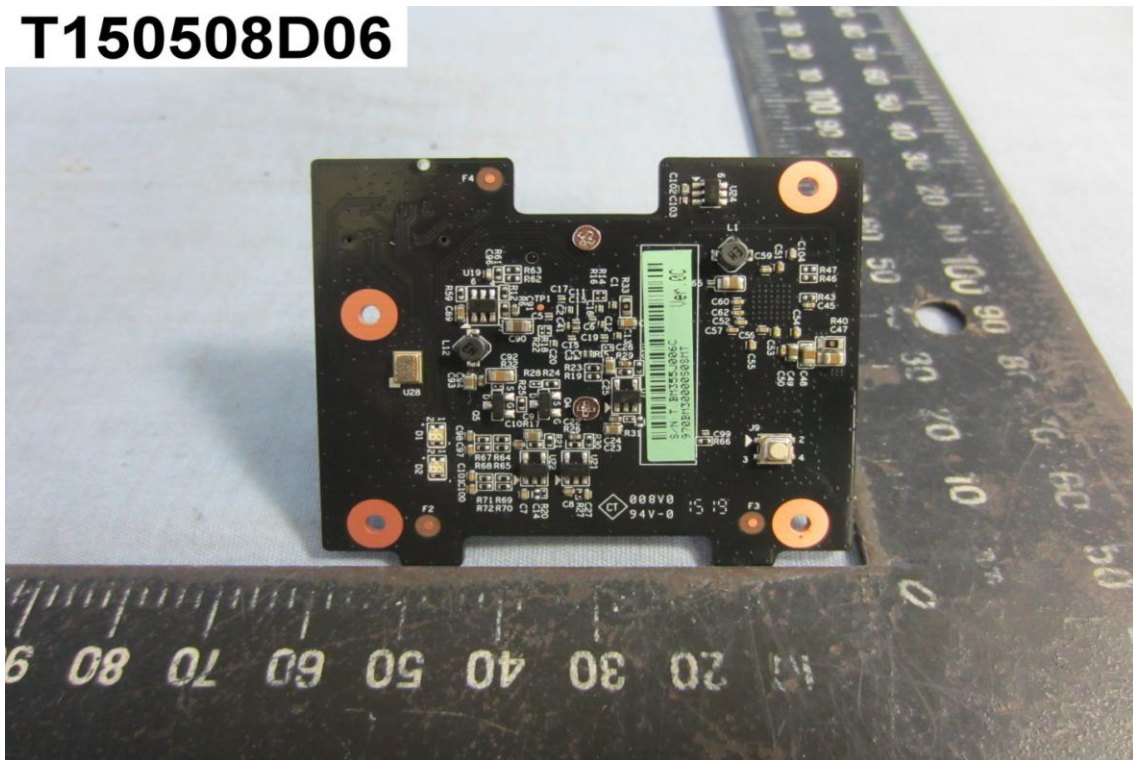
**T150508D06**



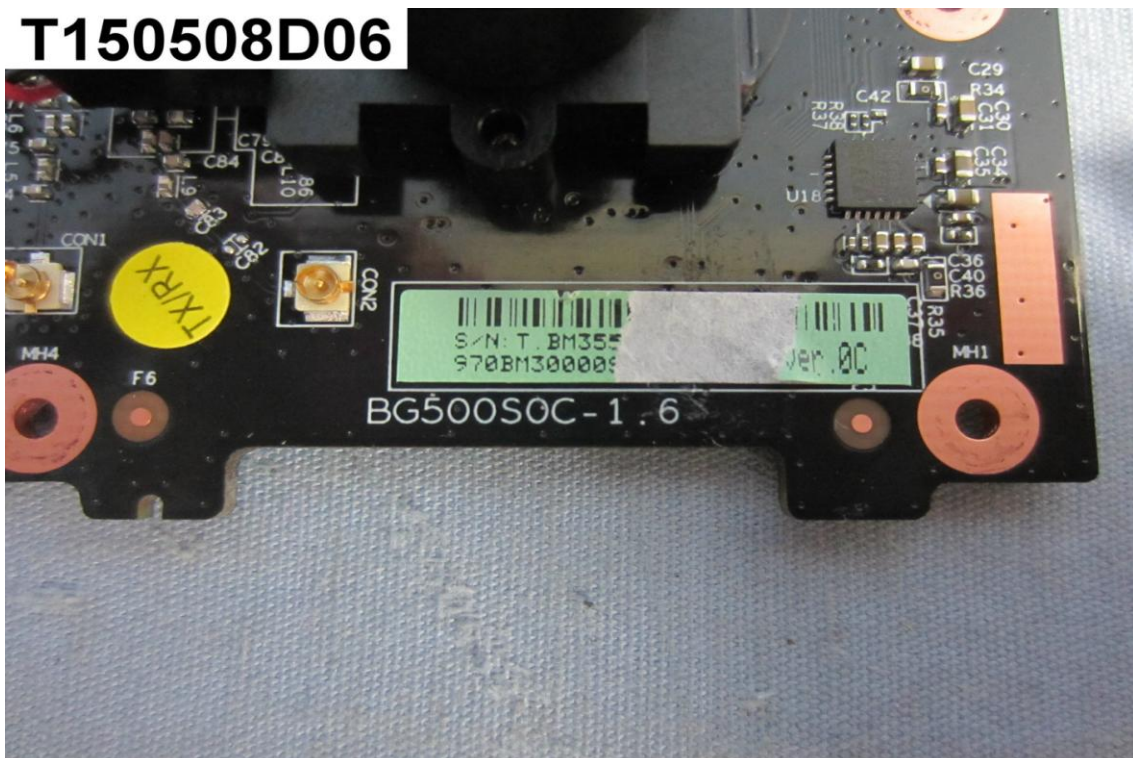
**T150508D06**



**T150508D06**

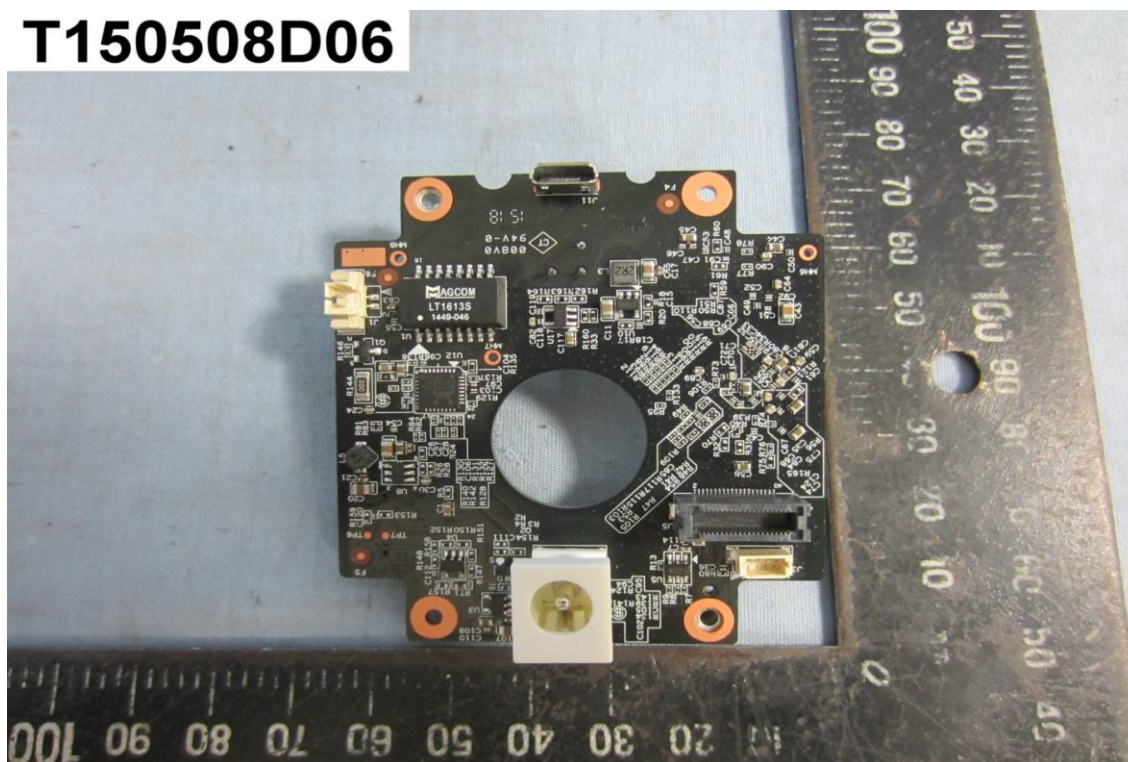


**T150508D06**

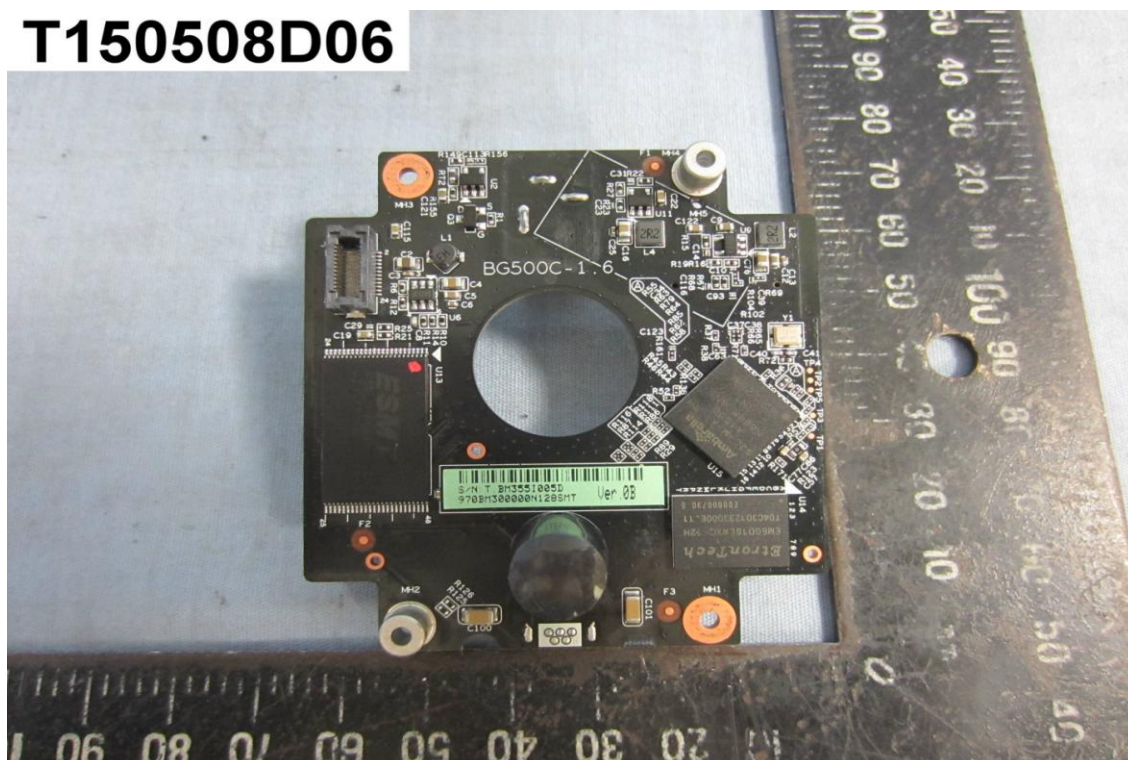




**T150508D06**

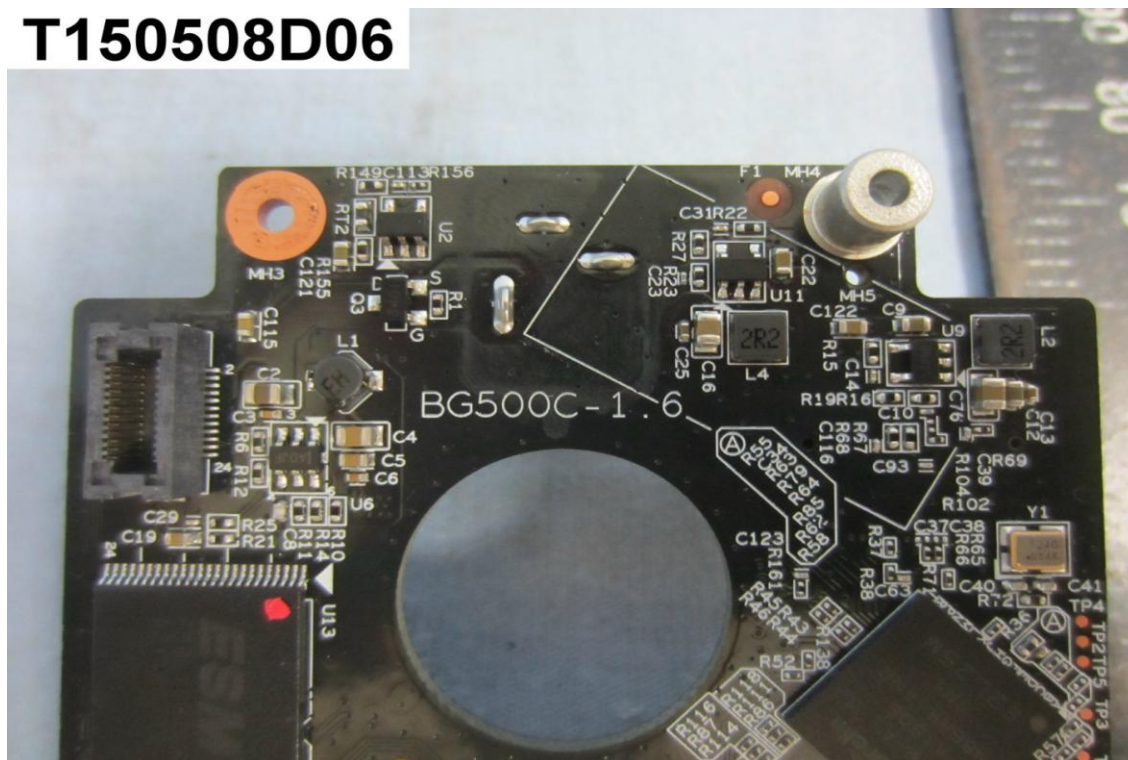


**T150508D06**

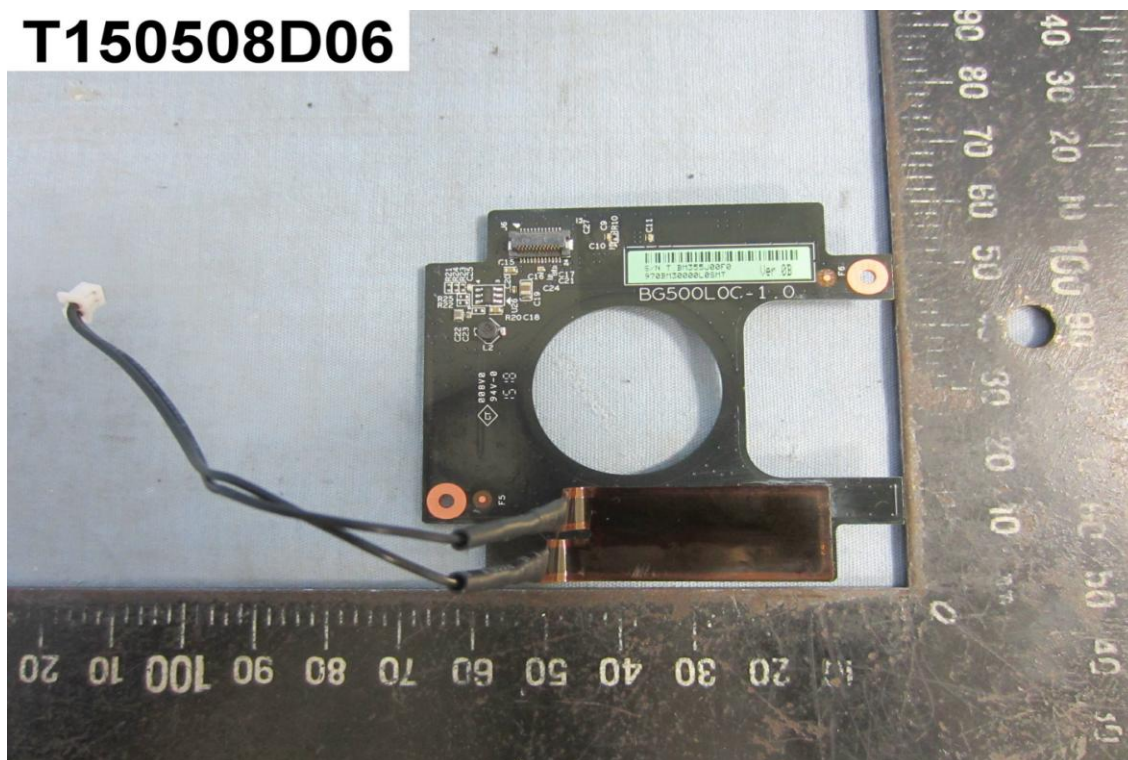




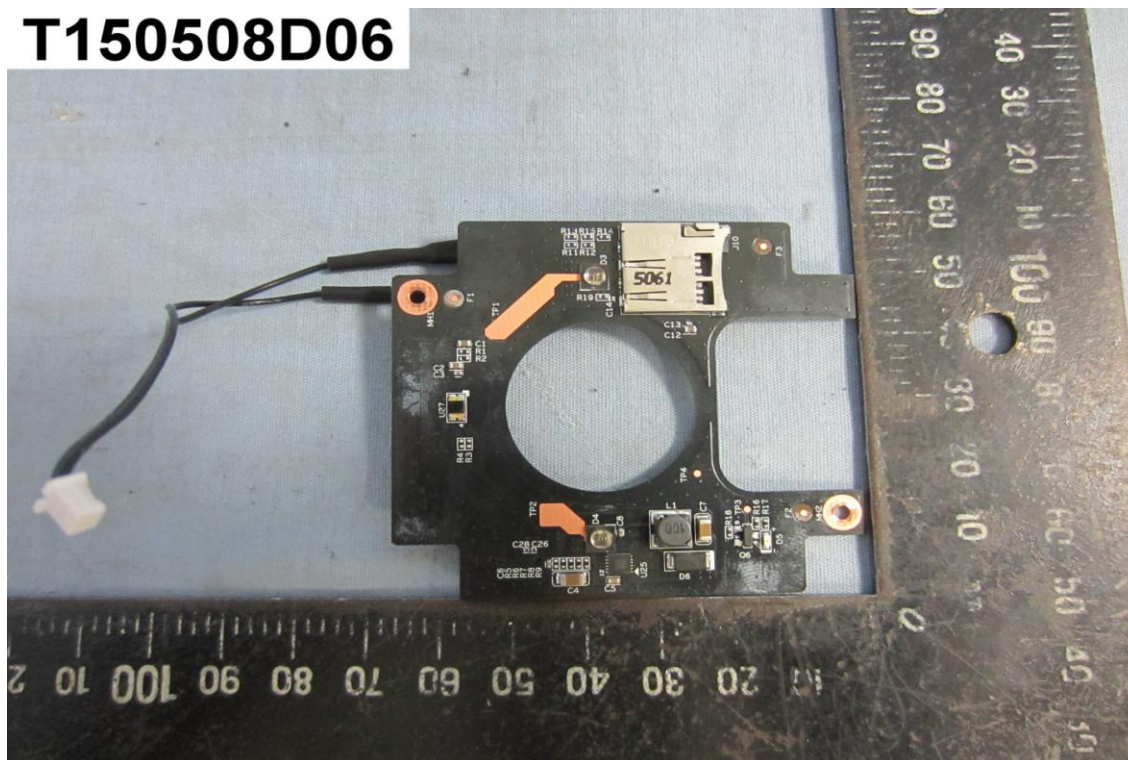
**T150508D06**



**T150508D06**



**T150508D06**



**T150508D06**







A close-up photograph of the internal components of a device, likely a medical device given the context. The main body is a white plastic housing. At the top, there's a black cylindrical component, possibly a sensor or a connector, with a white cap. To its left, a green circuit board is visible, with a black cable connected to it. Another green circuit board is on the right, with a white cable connected to it. A white plastic connector is in the center. A yellow plastic component is at the bottom right. A black rectangular component is at the bottom center. Red arrows point to the black cylindrical component and the green circuit board on the left.