



EMC Technologies Pty Ltd
ABN 82 057 105 549
57 Assembly Drive
Tullamarine Victoria Australia 3043

Ph: + 613 9335 3333
Fax: + 613 9338 9260
email: melb@emctech.com.au

To: Federal Communications Commission

Attention: Steven Dayhoff

From: Donna Cleary - EMC Technologies Pty Ltd

FCC ID: EJE-WB0007

Date: 2nd September 2004

Subject: FCC ID: EJE-WB0007 – 731 Confirmation No. EA637993

Correspondence Reference No. 27481

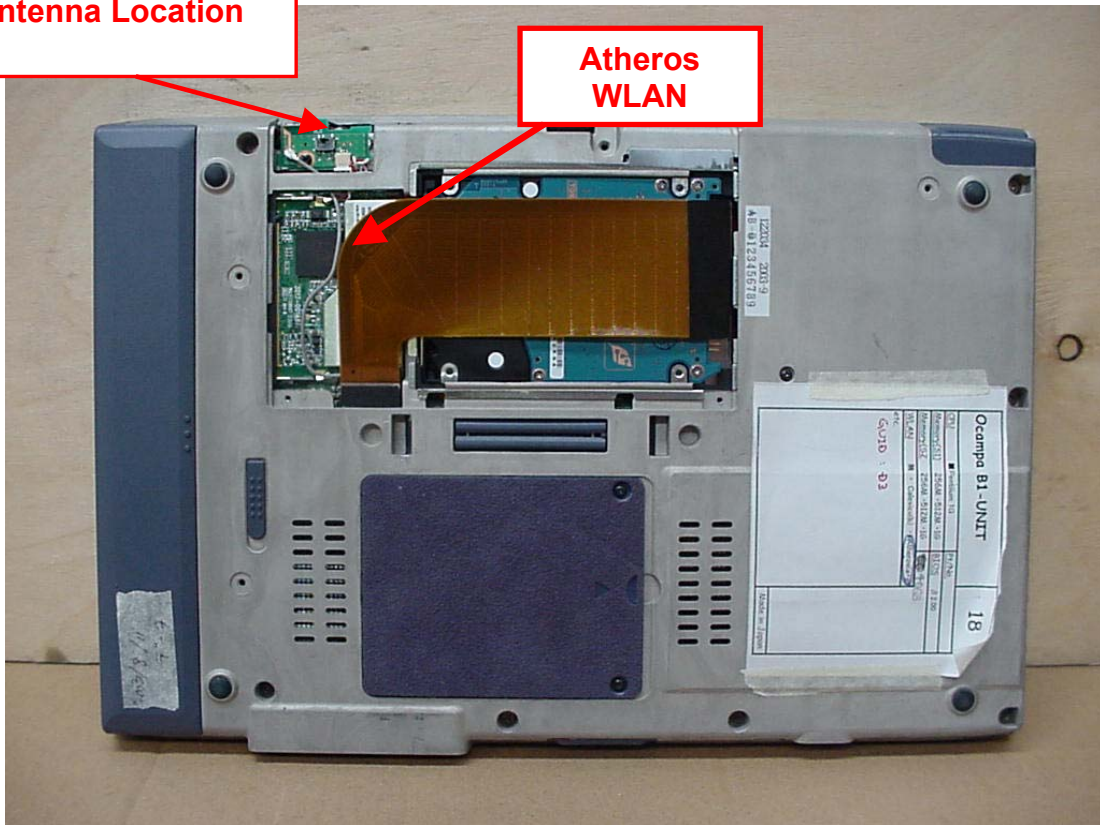
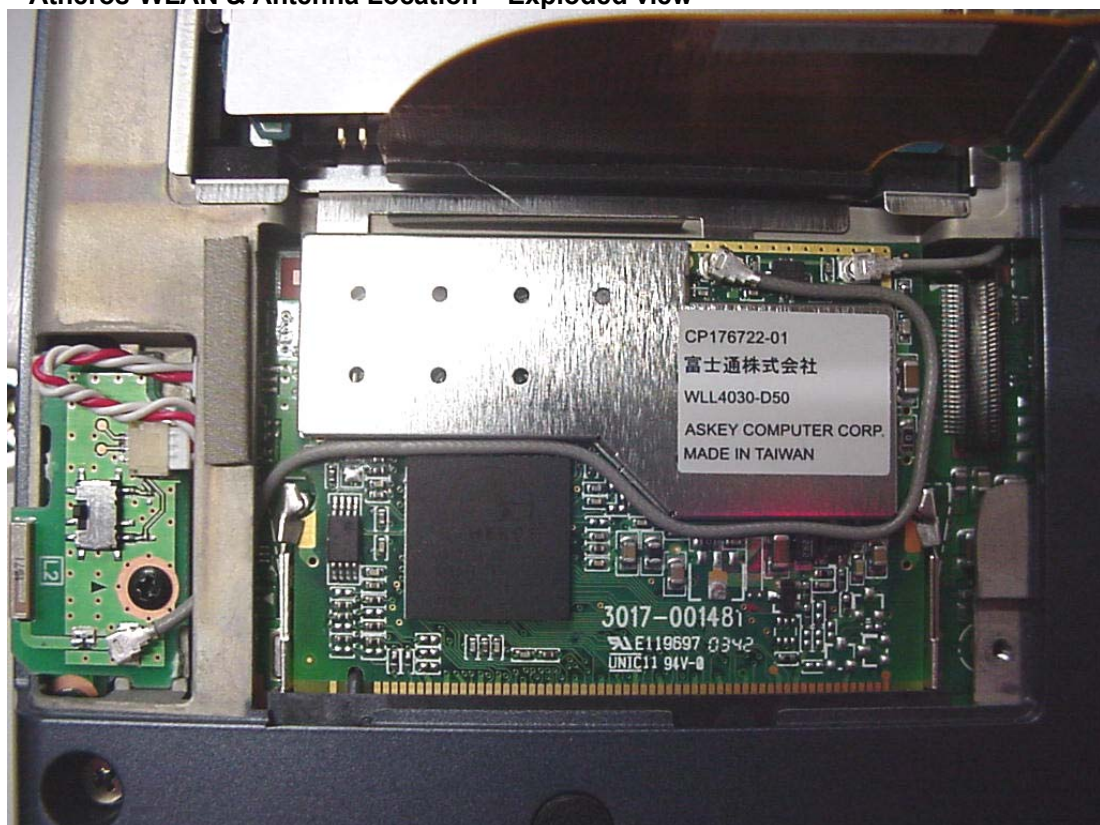
1. **SAR page 6 has 38mW NII 5.1-5.3 band, Form 731 has 43 mW**
Difference is explained as follows: Power (P) listed on Form 731 included antenna gain and cable loss, i.e (P = Recorded peak power + cable loss + antenna gain).
Recorded peak power = 15.8 dBm (38mW), Cable loss = -1.0 dB, Antenna gain = 1.51 dBi
therefore Power = 16.3 dBm (43mW).
Form 731 should state recorded peak power of 38mW
SAR Results (pg 6) use the recorded peak power as per the EMC report results.
2. **SAR page 6 has 37mW NII 5.8 band, Form 731 has 91 mW**
Difference is explained as follows: Power listed on Form 731 included antenna gain and cable loss, i.e (P = Recorded peak power + cable loss + antenna gain).
Recorded peak power = 15.7 dBm (37mW), Cable loss = -1.0 dB, Antenna gain = 4.91 dBi
therefore Power = 19.6 dBm (91mW)
Form 731 should state recorded peak power of 37mW
SAR Results (pg 6) use the recorded peak power as per the EMC report results.
3. **Please clarify whether LAN uses one or two antennas and clarify all antenna locations.**
WLAN module main antenna port is connected to WLAN mains antenna (Ae next to the WLAN as shown in the photo).The WLAN module Aux Antenna port is connected to WLAN Aux Antenna via Bluetooth circuitry. This is to disable the WLAN Aux Antenna when Bluetooth is used. Bluetooth is only connected to the Bluetooth Antenna/WLAN Aux Antenna. There are only 2 antennas in total for both WLAN and Bluetooth operation. Both antennas are shown in the attached photos (applicable photo appendices for NII & BT portions of this composite application).
4. **Please clarify whether Bluetooth was on for any LAN SAR tests, and if no why not**
Yes both WLAN modulations (DSSS and OFDM) were tested with the Bluetooth operating.
5. **Per 2.1033 (b) (3) please submit user operating (and installation, if applicable) instructions**
User Manual uploaded.

EMC Technologies Report Number: M040603_Cert_Ocampa3_Atheros_5.2_BT

APPENDIX B3

WLAN Module and Antenna Location Photographs



APPENDIX B3 – WLAN & Antenna Location**WLAN Antenna Location****Atheros
WLAN****Atheros WLAN & Antenna Location – Exploded view**

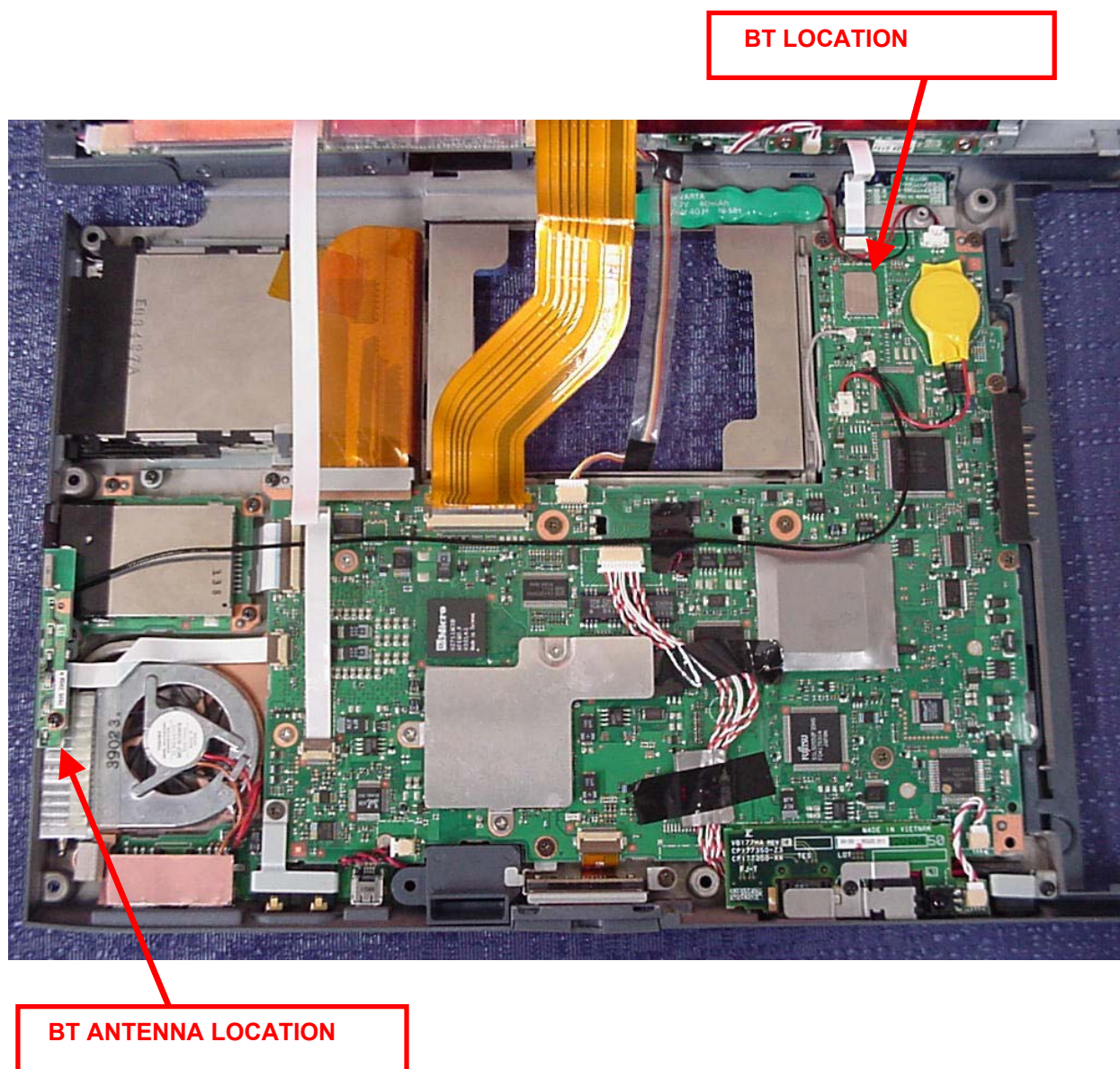
EMC Technologies Report Number: M040603_Cert_Ocampa3_BT_Atheros

APPENDIX B3

Bluetooth and Antenna Location Photographs



APPENDIX B3 – BT & Antenna Location



APPENDIX B3 – BT & Antenna Location

BT Antenna location – exploded view

