

## **EXHIBIT 9**

### **Internal Photographs**

(Pursuant to FCC Part 2.1033(b)(7) and 2.1033(c)(12) )

The following photographs are attached.

**Exhibit**

- |    |  |    |
|----|--|----|
| 1. | RF board <u>with</u> shields (Top)         | 9A |
| 2. | RF board <u>without</u> shields (Top)      | 9B |
| 3. | RF board <u>with</u> shields (Bottom)      | 9C |
| 4. | RF board <u>without</u> shields (Bottom)   | 9D |
| 5. | RF board with chassis and housing (Top)    | 9E |
| 6. | RF board with chassis and housing (Bottom) | 9F |
| 7. | Control head board (Bottom)                | 9G |
| 8. | Control head board (Top)                   | 9H |
| 9. | Exploded View of radio                     | 9I |

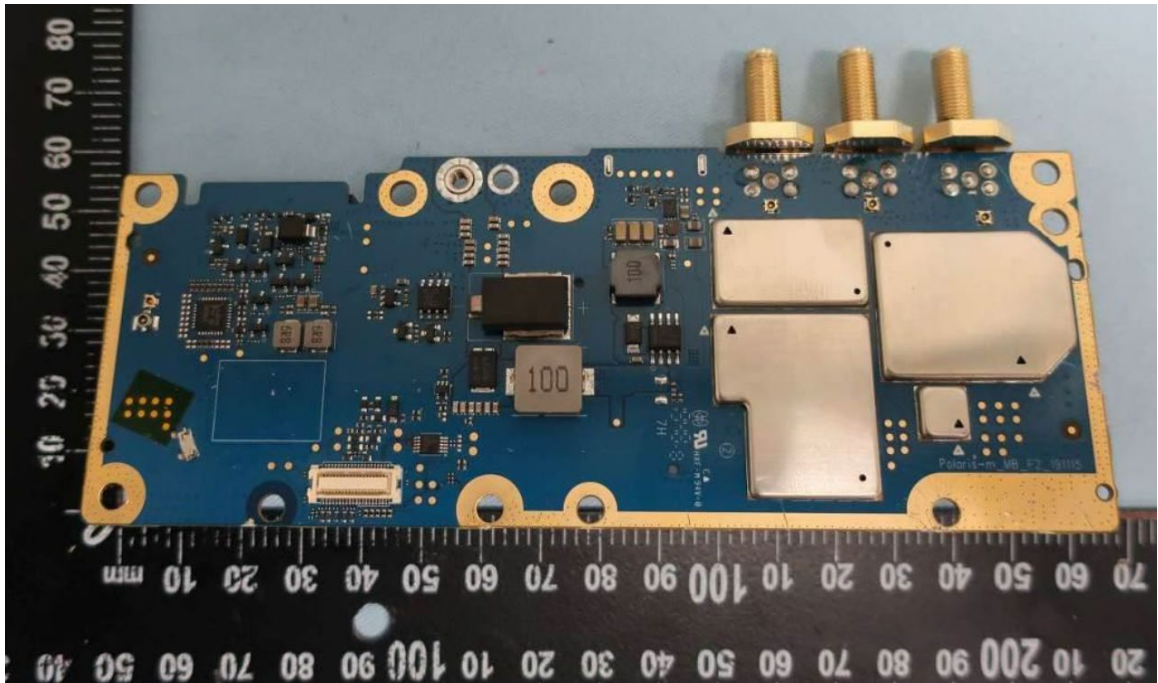


Exhibit 9A

RF board with shields (Top)

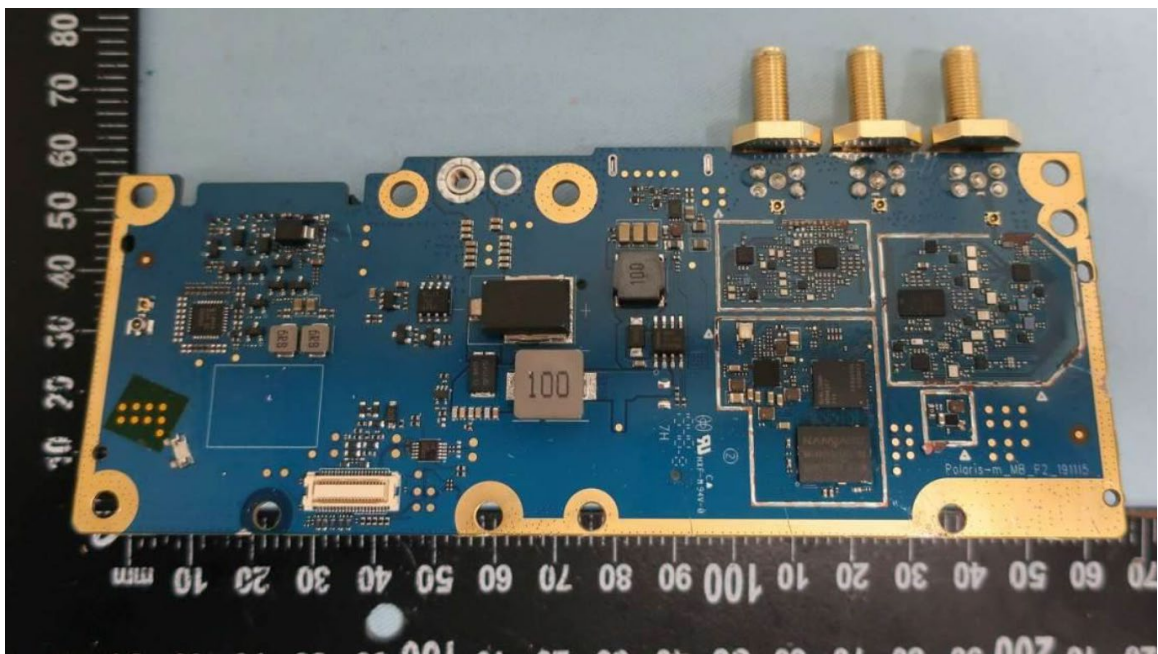


Exhibit 9A

RF board without shields (Top)

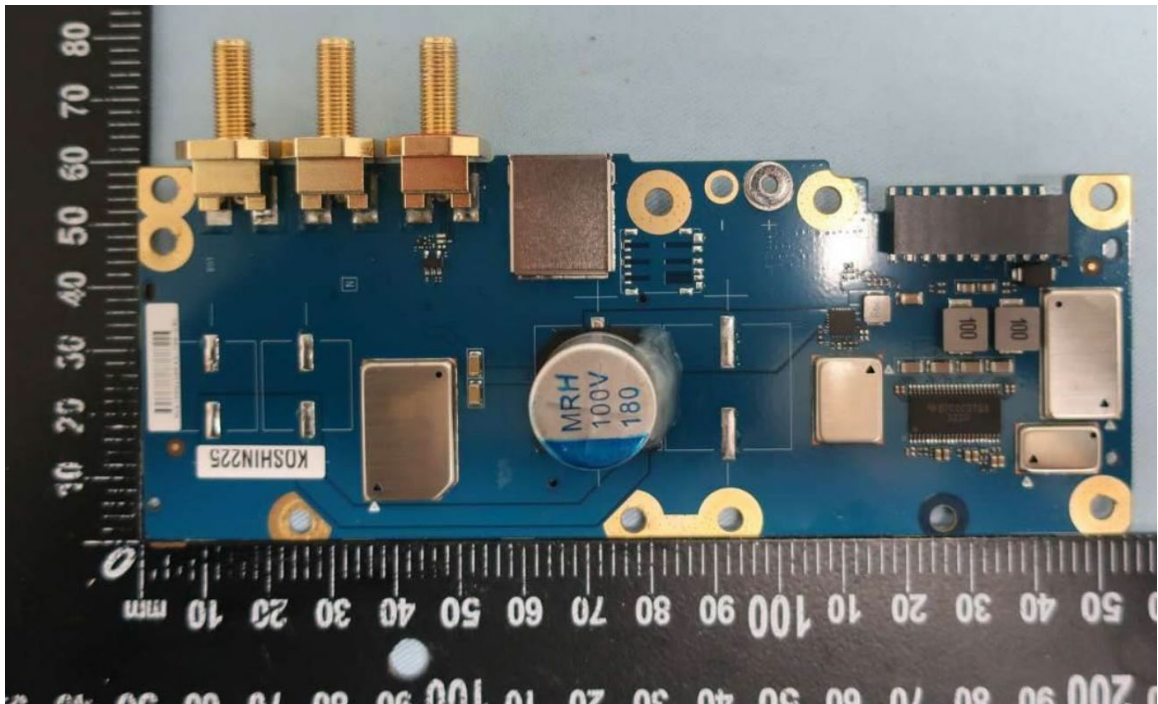


Exhibit 9B

RF board with shields (Bottom)

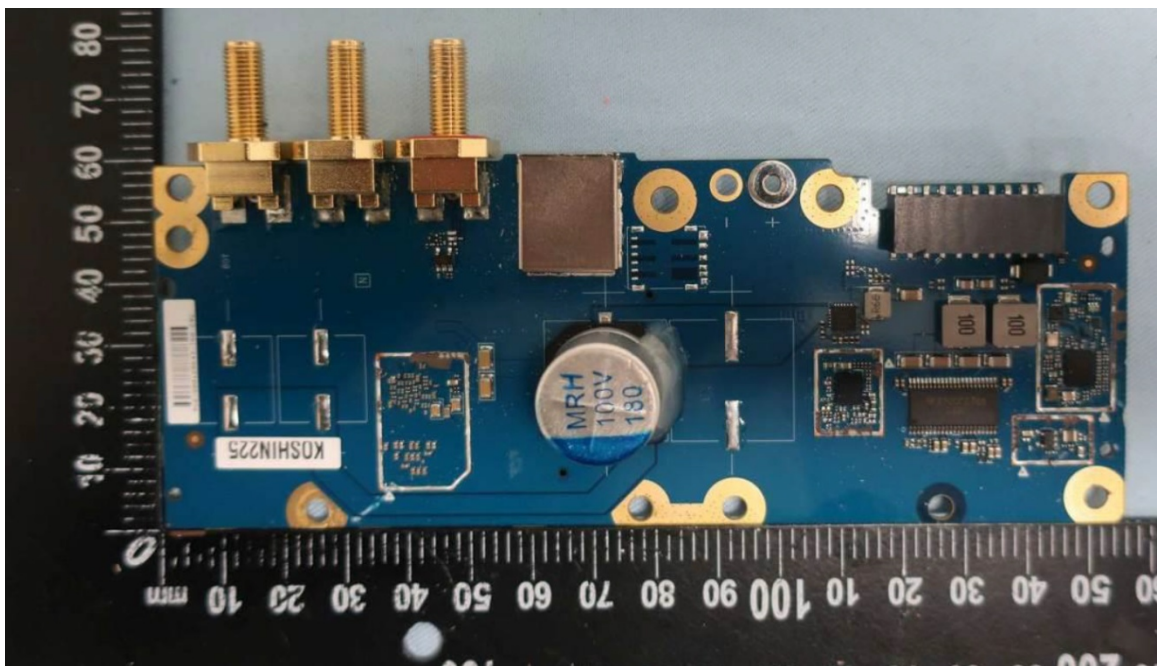


Exhibit 9C

RF board without shields (Bottom)



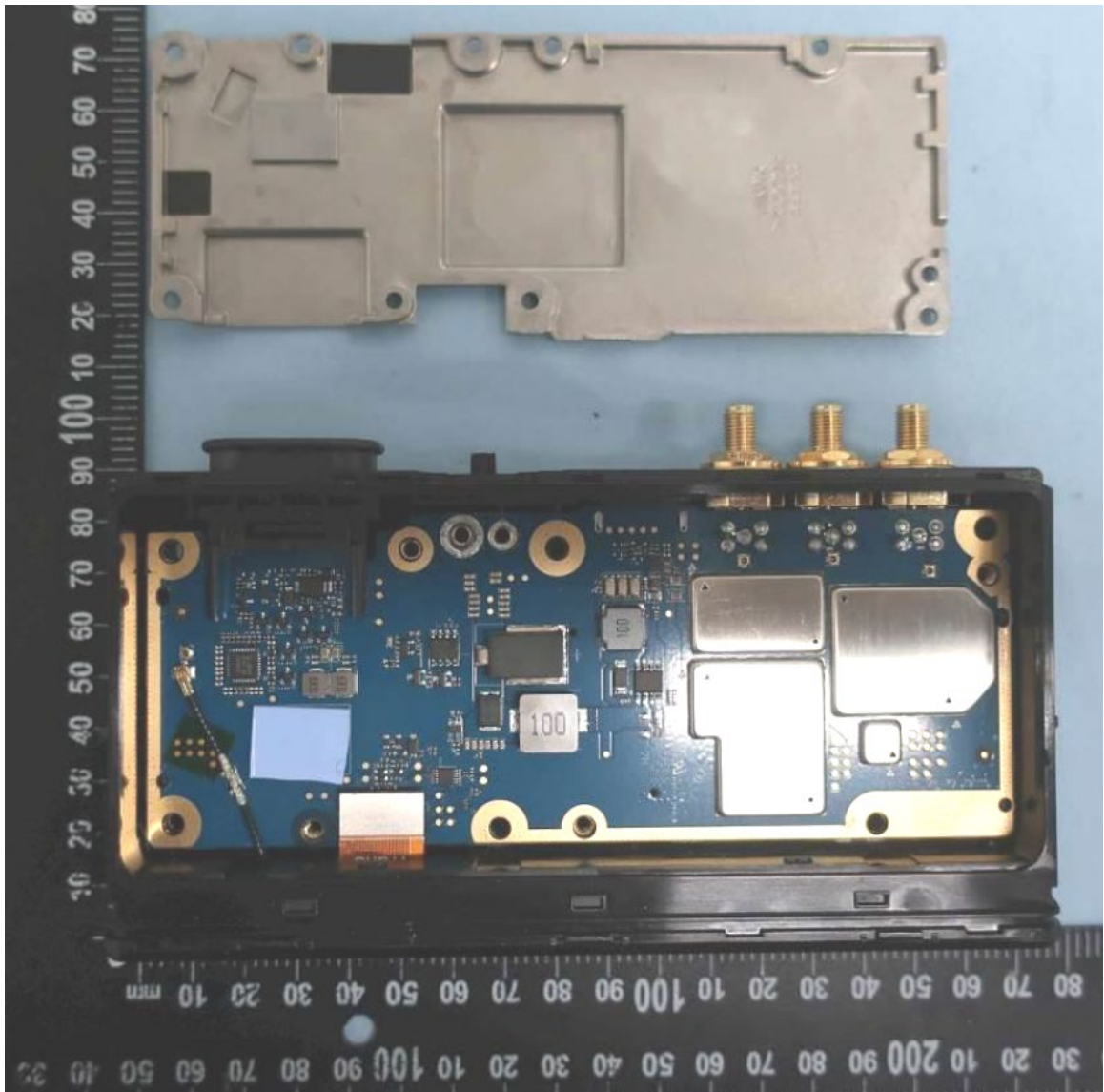


Exhibit 9E

RF board with chassis and housing (Top)

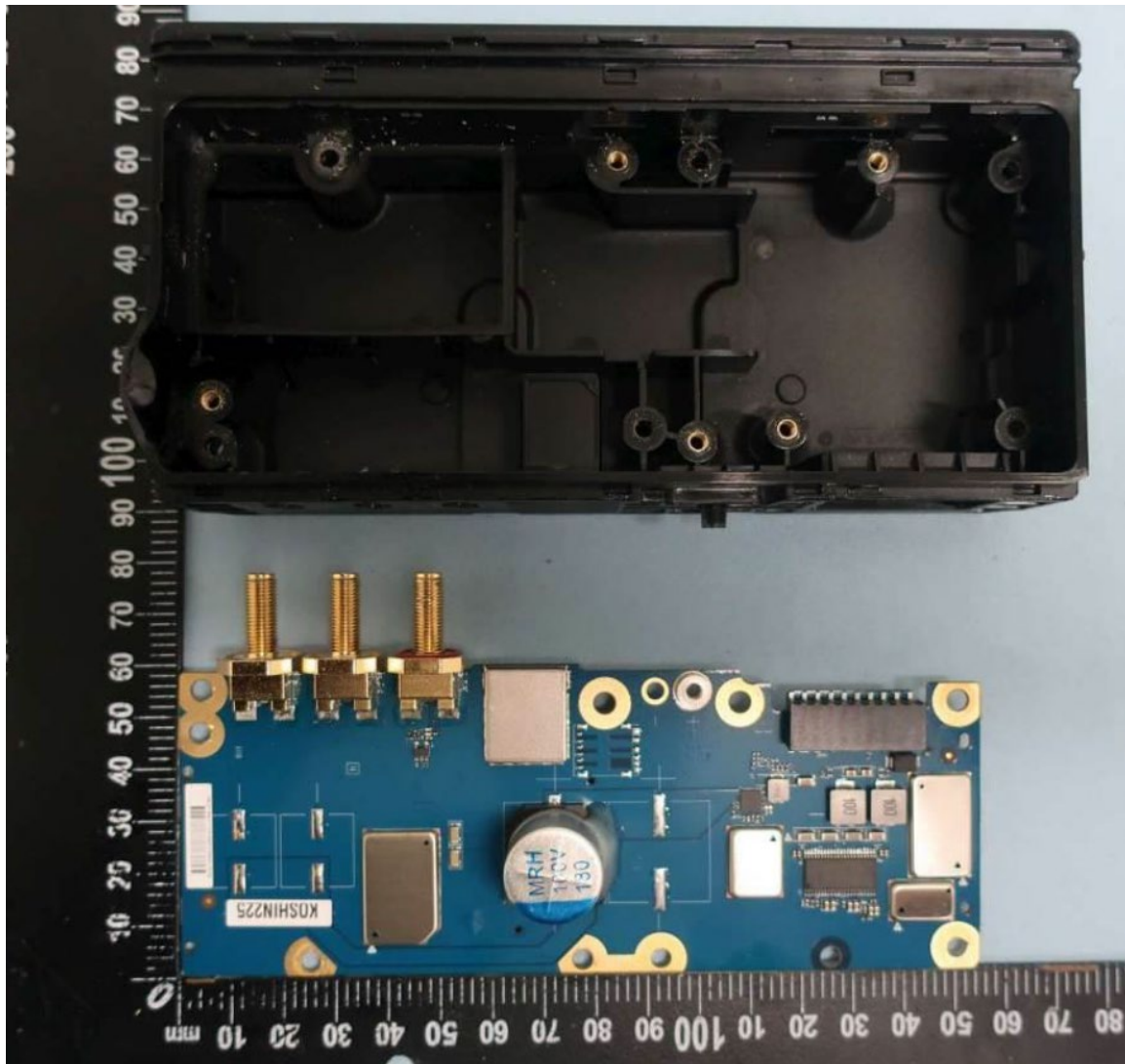


Exhibit 9F

RF board with chassis and housing (Bottom)



**Exhibit 9G**

**Control head board (Bottom)**

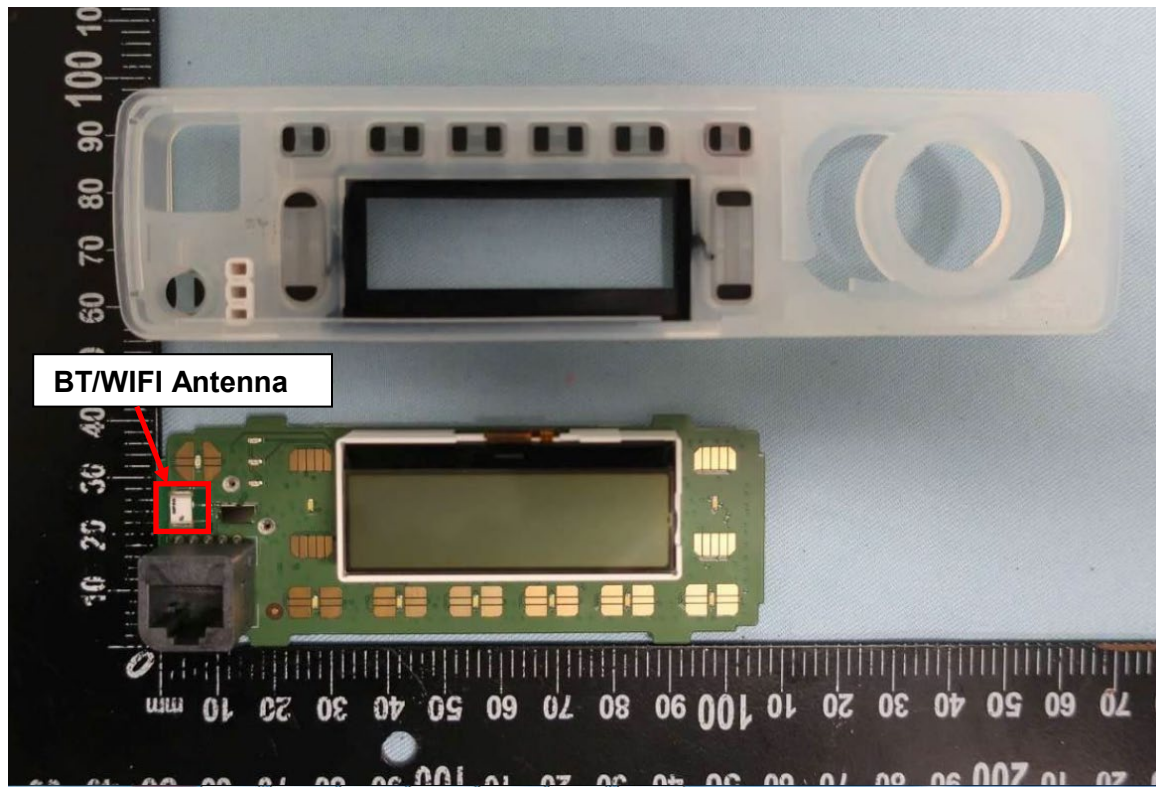


Exhibit 9H

Control head board (Top)



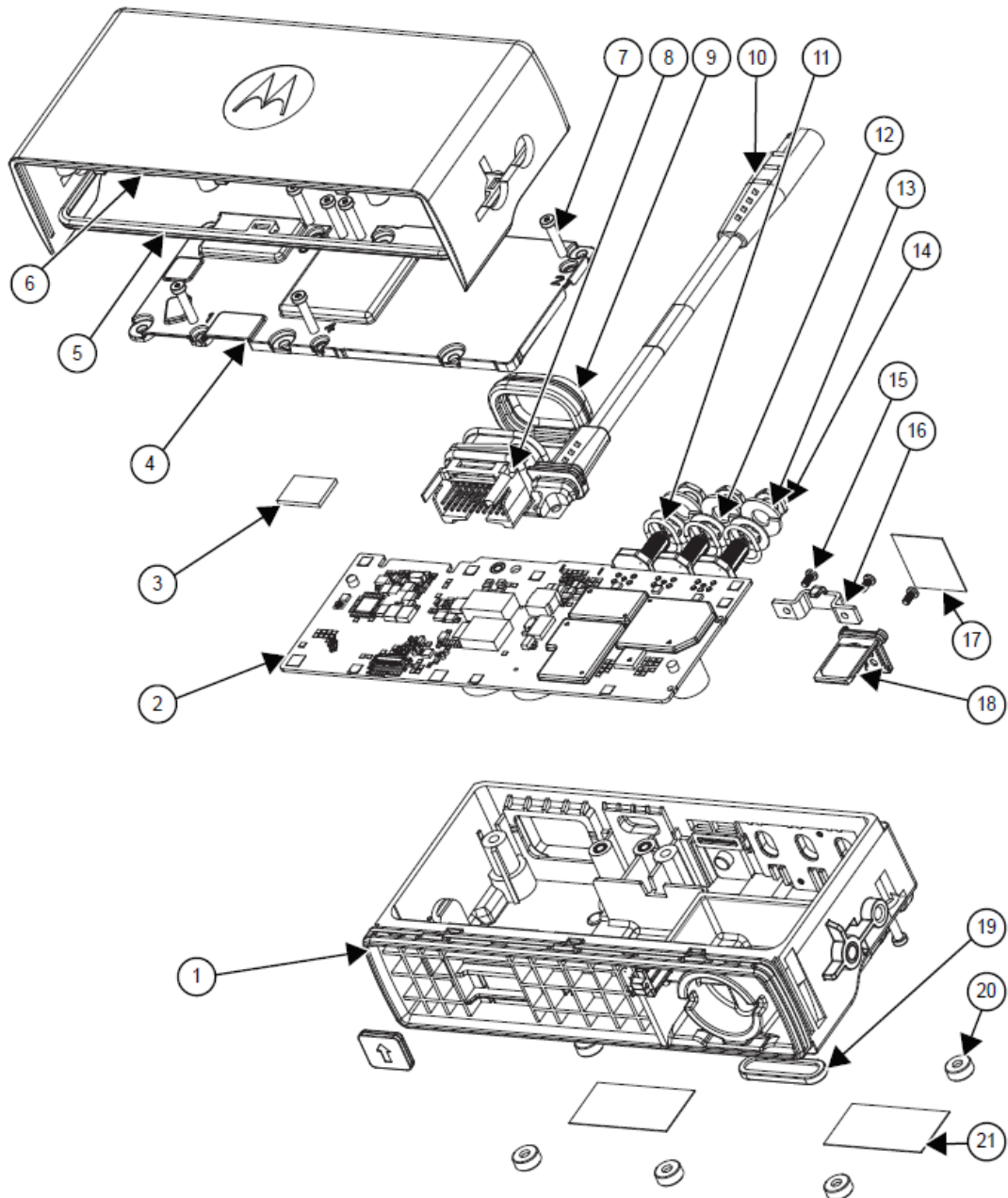


Exhibit 9I

Exploded View of radio