

User Manual

Ultrasonic Mist Humidifier

# Catalog

Attentions	1-2
Attentions & Working Principle and Characteristics	2
Humidity introduction and function	3
Operating steps	4-6
Connect to mobile client	6-8
Maintenance Instruction	9
Trouble Shooting Guide	10

## Attentions

Thank you for purchasing your new Ultrasonic Humidifier.

The humidifier helps you to restore an appropriate level of humidity and eliminate the discomfort associated with dry air. We wish you many years of healthy indoor air with this efficient and effective product.

We recommend you spend some time reading this instruction manual in order to fully understand all the operational features it offers.

**\* Read all the safety instructions carefully before use and keep this instruction manual for future reference.**

**Warning:** Please be aware of the following points or you might be in danger of high voltage charges or burn your body.

- 1). Never disassemble the base unit without consulting qualified personnel.
- 2). If the supply cord is damaged, it must be replaced by the manufacturer, its service agent or similarly qualified persons in order to avoid a hazard.
- 3). Do not add detergents, chemical solutions which are not made by our company into the unit.
- 4). Unplug appliance during filling, cleaning and maintenance.
- 5). Keep detergents and chemical solutions away from children.
- 6). Do not change attachment without definitive permission from our company otherwise you might cause a hazard.
- 7). If any abnormal smell during normal operation, please switch off and disconnect power supply and have qualified personnel amend.
- 8). If when cleaning with water, detergents & chemical solutions splash into mouth & eyes, consult a doctor to refrain from serious hazard.
- 9). Never touch water in the water basin & components in the water when the unit is in function.
- 10). Never switch on when there is no water in the water basin.
- 11). Never scrape Transducer cpl on your own.
- 12). Never clean Transducer cpl with detergents or chemical solutions that are not made by our company.
- 13). Never let water splash into inner base unit to avoid components damage.
- 14). Care should be taken when using the appliance due to emission of hot water vapor.

## Attentions & Working Principle and Characteristics

- 15). Before cleaning and maintenance, the appliance must be disconnected from the power supply.
- 16). Prior to cleaning or other maintenance, the appliance must be disconnected from the supply mains.
- 17). This appliance can be used by children aged from 8 years and above if they have been given supervision or instruction concerning use of the appliance in a safe way and if they understand the hazards involved. Cleaning and user maintenance shall not be made by children unless they are older than 8 and supervised. Keep the appliance and its cord out of reach of children aged less than 8 years. Cleaning and user maintenance shall not be made by children without supervision.
- 18). Children should be supervised to ensure that they do not play with the appliance.
- 19). Indoor use only.

### Working Principle

Ultrasonic Humidifier uses the ultrasonic high-frequency oscillator to break up water into tiny water particles with the diameter of about 1–5 $\mu$ m. The ventilation system blows out this water into the dry air where they evaporate to give the required humidity. The clearly visible smooth and even fog can be seen out of the unit.

### Features

- High efficient in humidification with large output.
- Low energy consumption, save 85–90 percent of electricity than normal stream humidifier.
- Long lifetime.
- Automatic control of humidity level, lack-of-water security protection.
- Heating Function: Touch the Heating symbol to make warm mist. Press again to stop the heating function.
- Plasma: Touch the Plasma symbol of Plasma to spread a number of Plasma elements. Press again to stop the Plasma function.
- Base with tray for the felt, to wet it with aromatic oil.

# Humidity Introduction and Function

## Correct Humidity Level

What exactly is relative humidity: Relative humidity is the amount of water vapor in the air, expressed as a percentage of the maximum amount that the air could hold at the given temperature.. We normally mark it with % RH, like 45%RH. Atmosphereic air always contains water vapor, the percentage of which depends on the meteorological conditions. The higher the temperature is the more the air keeps water vapor. Therefore, we use the concept of "relative humidity". When the cold air is heated up to the comfort temperature in winter, the relative percentage of the water vapor falls which means the relative humidity drops. In order to keep a comfortable and health environment at home, we need some artificial addition of water or water vapor to the room air– that's air humidification.

### Ideal relative humidity levels under different situations:

(The most comfortable RH for human being 45–65%RH)

- Ideal RH for prophylactic and curative purpose: 40–55%RH
- Computer and telecom apparatuses: 45–60%RH
- Furniture and musical instruments: 40–60%RH
- Library art gallery and museums: 40–60%RH
- Library art gallery and museums: 40–60%RH

## Functions

### 1: Relative Humidity

A: The percentage of water mist in a given space with a given air temperature is named as relative humidity, usually marked as %RH, i.e. 45%RH. The air contains water mist more or less. The proportion of water mist to the air varies according to different air temperatures. The higher the temperature, the more water mist inhaled in the air.

B: In the winter, the cold air outside enters the room and becomes warmer by the higher temperature in the room. As a result, the relative humidity decreases. If you want to keep the healthy environmental humidity, we need to increase the mist volume in the air. The humidifier can do that for us.

C: Relative humidity in different environments suitable for people:

Museum, exhibition hall, and library: 40–50%RH

Room with computer, experiment equipments: 45–60%RH

Bedroom, living room: 45–64%RH    Patient's room: 40–55RH    Room with piano: 40–60%RH

### 2: Water filter

A: Cation exchange resin filter can soften the hard water.

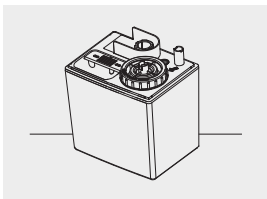
B: Cation exchange resin filter demineralize in the water.

## Operating Steps

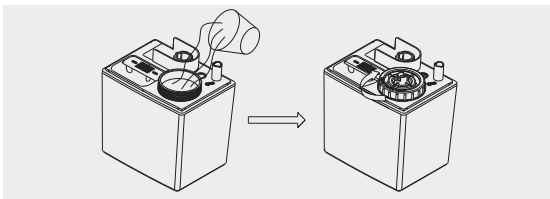
### Operation Instruction

First Operation, put unit in the room temperature for half of an hour before running.  
It is recommended to use the unit under temperature of 20 degree C, relative humidity less than 80%RH.  
Use clear water not over 40 degree C  
Check the water basin, make sure it is clear.

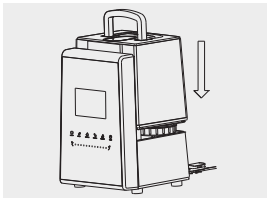
### INSTRUCTIONS FOR USAGE



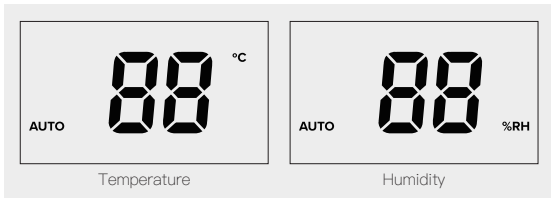
1. Put the machine on a flat surface.



2. Fill the water into the water tank, and then tighten the tank cover.




3. Put the water tank on the main base.




4. Check if the rated voltage meets the input voltage, and plug into the socket. Then display shows the current temperature and humidity.




# Operating Steps





5. Touch the symbol POWER  on the machine; the background LED light will be on. The machine will begin to work in AUTO mode. Display shows AUTO symbol. After 15 seconds without any operation, the display will become dim, press any key except power key to wake up the display.


Temperature of the air, degrees Celsius	≤19	20	21	22	23	24	25	26	27	28	29	30	31	32	33	34	35	36	≥37
Humidity(%)	65	60	58	57	55	53	50	48	45	43	40	38	36	35	34	32	31	30	25


6. Touch the symbol ANION  the anion generator works. On the LED display, it shows the shape of anion . Touch again to stop the function.

7. Touch the symbol HEATING  the warm mist will come out after 10~15 minutes. On the LED display, it shows the same symbol . Touch again to stop the function. Mist will become cool.



8. Constant humidity: Before you touch the symbol HUMIDITY , LED display shows the current humidity. You may set the humidity arranged from 30%RH to 75%RH. Touch once, AUTO mode is cancelled, it will increase by 5%RH. When it reaches 75%RH, touch again, it will show "Co" and flash for 3 seconds to exit humidity setting function. After you set the expected humidity, the machine will keep the memory and confirm after 5 seconds, 5 seconds later, the symbol %RH will blink and LED display shows the current humidity. Touch again, it shows the expected humidity setting. If the expected humidity is less than the current humidity, the machine will be in sleeping state. But if the expected humidity is 3% higher than the current humidity, the humidity function will work. Mist output speed cannot be set during the constant humidity mode. Long-press the symbol  or , to cancel auto humidity, but enter to AUTO mode.


9. Touch the symbol MODE , baby mode will be turn on (keep constant humidity at 55% with warm mist and plasma turn on). In baby mode, mist output speed cannot be set. Press symbol MODE  again to enter auto mode. Press MODE  for two seconds to enter sleep mode. In sleep mode, display and water tank indication light will turn off and  will be turn on. Humidifier will keep running. Touch any button to cancel sleep mode and display will turn on.

10. Timer setting: There are 12 timer setting: 1,2,3,4,5,6,7,8,9,10,11,12 hours. Touch the symbol TIMER , the LED display will show the desired setting timer. Touch till "Co" display on the LED, timer setting is cancelled. The timer shows the rest operation time and decreases by 1 hours, i.e., if the timer is set at 12 hours, LED display shows 11 after one hour. To know what time have been set, just to touch TIMER symbol. Touch again, to set timer again.

11. Auto Shut-Off: Once the water in the basin is too little to keep the machine working, the machine will automatically stop working. LED shows the shape of lack of water . Refill the water, and the machine will restart. If don't refill water within 15 minutes, the machine will automatically power off.

## Operating Steps & Connect To Mobile Client

12. Slide the symbol MAX-MIN “”, AUTO mode is cancelled and the mist output is in the first speed. You may select 7 desired levels of mist volume. The corresponding strip symbol will appear on the display. 5 seconds after setting mist output speed, the current room humidity will appear on the display as well. On the remote control, just to press symbol “” to select mist output level and AUTO mode in different times.

13. Auto Shut-Off: Once the water in the basin is too little to keep the machine working, the machine will automatically stop working. LED shows the shape of lack of water “”. Refill the water, and the machine will restart. If don't refill water within 15 minutes, the machine will automatically power off.

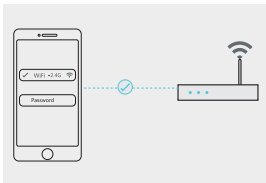
14. On the remote controller, the related symbol controls the corresponding function.

15. No matter in any working mode, if no any operation in about 15 seconds, the display will turn dim.

### Operation steps

- Take the water tank out of the unit, open the water tank cover and fill the tank with clear water. Close the cover and put the tank onto the base unit carefully.
- Put the nozzle into the socket on top of the water tank.
- Connect the power supply, switch on the unit (NEVER RUN THE UNIT WHEN THERE IS NO WATER IN WATER BASIN), the main connection lamp will on. The unit will begin working.

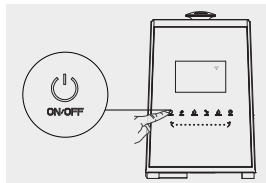
### Connect To The Mobile Client —Quick Connect mode



1. Configure the network.



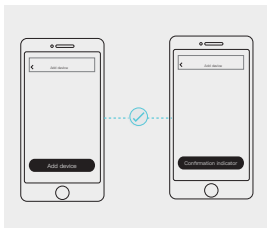
2. Scan the QR code below to download the APP, or search for “ProscenicHome” in the APP store to download the APP.



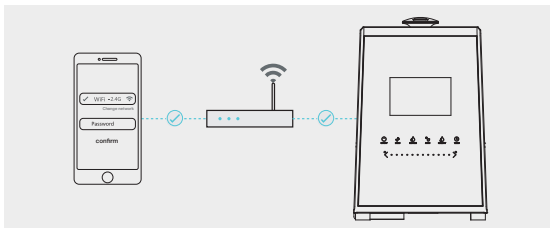
3. In the power-on state, long press the key “” 3 seconds until the WiFi indicator “” flashes quickly.



## Connect To Mobile Client



4. APP add device: turn on the APP, select add humidifier device and confirm WiFi indicator “” flash.



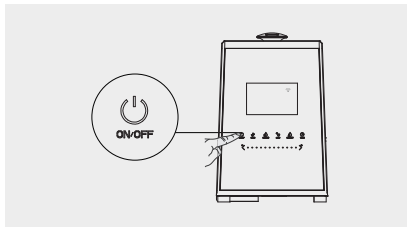
5. Perform network configuration. According to the APP page prompt, select and enter the WiFi password to make the device enter the connection state and wait for the distribution network to complete.

\* Note: the host does not support 5.8g band WiFi network.

## Connect to the mobile client — Hotspot Mode

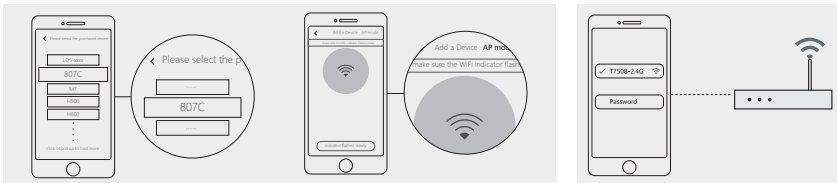


1. Connect your phone to WiFi, scan the QR code below, or search for “ProscenicHome” in the app store to download the app.



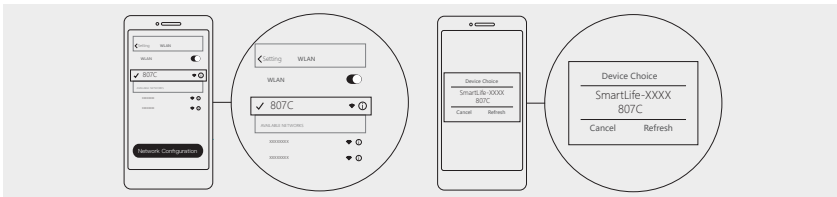
2. In the power-on state, long press the key “” 66 seconds until the WiFi indicator “” Slow flash.

## Connect To Mobile Client & Parameters



3. Add a humidifier device to the app, switch to the hotspot mode, and confirm that the WiFi indicator is in a slow flashing state.

4. According to the prompt of the APP interface, select WiFi and enter the password.



5. According to the APP interface prompt, turn on "Phone Settings – Wireless LAN(WiFi)", select "Proscenic-xxxx" network connection and return to APP. Perform network configuration and wait for the distribution network to complete.

\* Note: the host does not support 5.8g band WiFi network.

## TECHNICAL DATA

- Model: SPS-807W
- Power supply: 110-120V 50/60Hz
- Heating power: 80W
- Humidify power: 30W
- Total power: 110W
- Water tank capacity: 5.3L(1.4gal)
- Evaporation Rate: ≥300mL/h
- Noise level: ≤35dB(A)

## Maintenance Instruction

### Maintenance

In a case when the water is hard which means water contains too much calcium and magnesium, it can cause a “white powder” problem and leave heavy scales on the surface of water basin, transducer and inner surface of the water tank. Scales on the surface of transducer will let the unit work improperly.

### We recommend

- 1). Use cold boiled water or distilled water.
- 2). Clean the transducer, water tank and basin unit every week.
- 3). Change the water in water tank more often to keep it fresh.
- 4). Make sure to pull out the water from the water tank and dry the water basin before you store the unit unused for a long period of time.
- 5). Clean the whole unit and make sure that all parts of the unit are dried completely before unused for longer period of time.

### How to clean the transducer

- 1). Put 5–10 drops of cleaning abluent on the surface of the transducer, wait for 2–5 minutes.
- 2). Brush off the scale from the surface.
- 3). Rinse the transducer with clean water.

### How to clean the basin unit

- 1). Clean the water basin with soft cloth and the cleaning abluent if there is scale in it.
- 2). If the scale is covered on the security switch, drop the cleaning abluent on the scale and clean it out with the brush.
- 3). Rinse the water basin with clean water.

## Trouble Shooting Guide

### Trouble Shooting Guide

If any trouble is found in normal operation, please kindly refer to the following points:

Trouble	Possible reasons	Solution
Power lamp off, does not work	No power supply	Connect power supply, switch on
Power lamp on, no mist outlet with wind	1. No water in water tank 2. Security switch is too loose	1. Fill water into water tank 2. Tighten the switch
Abnormal smell mist	1. New unit 2. Dirty water or water sitting too long	1. Take out water tank, open cover, let it stay 12 hours in cool position 2. Clean water tank, fill with clear water
Power lamp on, unit doesn't work	Too much water in the water basin	Pull out same water from the water basin, close the cover of water tank tightly
Mist fog is too low	1. Too much scale in the water basin 2. Water is too dirty or water kept too long in the tank	1. Clean transducer 2. Clean water tank, change to fresh clear water
Abnormal noise	1. Resonant in water tank when water is too low 2. Unit is on a unstable surface	1. Fill water into water tank 2. Move the unit to a stable flat surface
Mist fog coming out from around nozzle	There are apertures between the nozzle and water tank	Dip the nozzle in water for a while and then fix it to the socket on water tank



### DISPOSAL

Do not dispose this product as unsorted municipal waste, collection of such waste separately for special treatment is necessary.

Add :

KONFOR

Foshan Samyoo Electronic Co.,Ltd  
Add : Jiangcun Industrial Zone ,Leliu ,Shunde  
Foshan, Gugnagdong , P.R.China  
Tel : 0757-28601701  
Fax : 0757-28601711

## **FCC STATEMENT :**

This device complies with Part 15 of the FCC Rules. Operation is subject to the following two conditions:

- (1) This device may not cause harmful interference, and
- (2) This device must accept any interference received, including interference that may cause undesired operation.

**Warning:** Changes or modifications not expressly approved by the party responsible for compliance could void the user's authority to operate the equipment.

NOTE: This equipment has been tested and found to comply with the limits for a Class B digital device, pursuant to Part 15 of the FCC Rules. These limits are designed to provide reasonable protection against harmful interference in a residential installation. This equipment generates uses and can radiate radio frequency energy and, if not installed and used in accordance with the instructions, may cause harmful interference to radio communications. However, there is no guarantee that interference will not occur in a particular installation. If this equipment does cause harmful interference to radio or television reception, which can be determined by turning the equipment off and on, the user is encouraged to try to correct the interference by one or more of the following measures:

- Reorient or relocate the receiving antenna.

- Increase the separation between the equipment and receiver.

- Connect the equipment into an outlet on a circuit different from that to which the receiver is connected.

- Consult the dealer or an experienced radio/TV technician for help.

## **FCC Radiation Exposure Statement:**

This equipment complies with FCC radiation exposure limits set forth for an uncontrolled environment. This equipment should be installed and operated with minimum distance 20cm between the radiator & your body.