

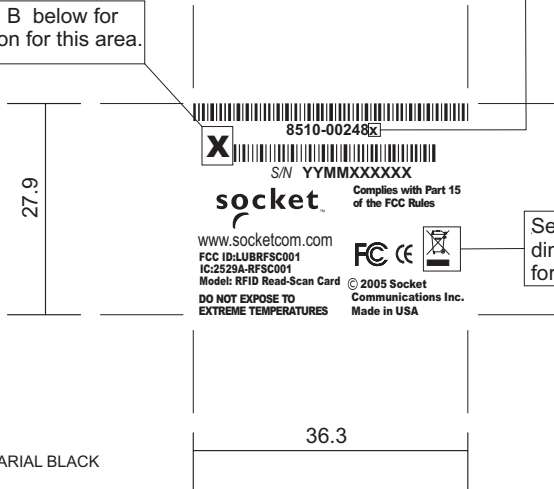
## Notes: Unless Otherwise Specified

The information contained on this document is proprietary of Socket Communication, Inc. any distribution, duplication, or manipulation of this document is prohibited with-out written consent from Socket Communications, Inc.

- 1.) Reference drawing: 6510-00024 for die cut and material specifications.
- 2.) Font size at vendor discretion. Vendor must choose a size that is clear and readable by the human eye.
- 3.) Artwork should be centered top to bottom and left to right on the label. See below for reference of placing the artwork in relationship to the label.
- 4.) Artwork of the label should be oriented and laid out like Detail A.

Part# Revision placement holder.  
**All placement holder should be replaced with the Revision letter provided on the ECO or ERO document.**  
See DETAIL B below for more information.

See Detail B below for specification for this area.



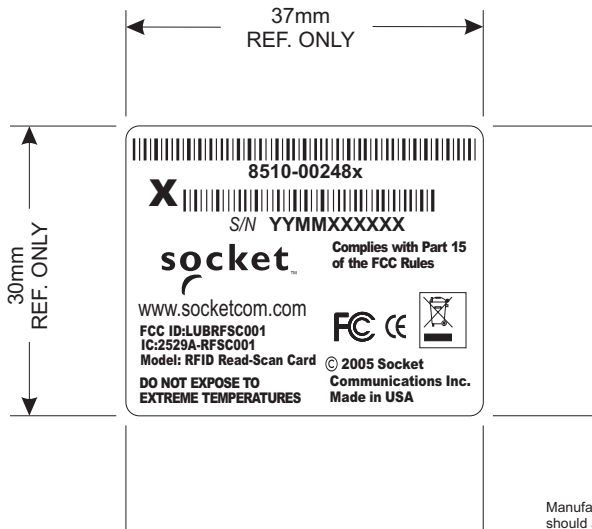
See page 2 for dimension specification for this symbol.

SEE DETAIL B FOR BARCODE INFO.



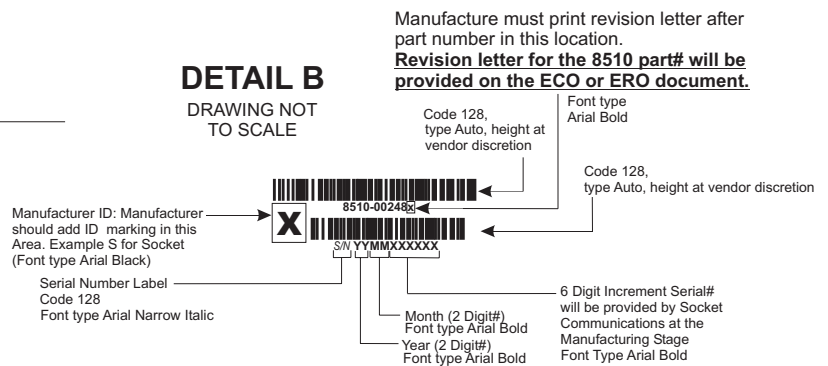
**DETAIL A**  
SCALE 1:1  
REF. ONLY

Place tolerance of the printing +/- 0.3  
using (min. 300DPI) thermal transfer printer  
To be printed in NMP production



**DRAWING**  
**NOT TO SCALE**

**DETAIL B**  
DRAWING NOT TO SCALE



ALL DIMENSION IN mm

**socket**  
Communications, Inc.

www.socketcom.com

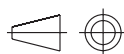
Sheet 1 of 2

Original Scale 1 to 1

Drawn

James Rebello

Date  
09/13/05



Original Size A

ENGR

NMP Code

CHK

MKTG

3740Cental Court  
Newark, CA. 94560

PN: (510)744-2700  
FX: (510)744-2727

Drawing Title

Label, Barcode, RFID/SCAN, T2, CL1

Drawing Number

6530-00190

Approved / Date

Rev

A

## Design of Marking (Alternative 2)



Crossed-out wheeled bin  
required according to Art. 10.3  
of Directive 2002/96/EC,  
described in Annex IV

Marking for identification of  
placing on the market  
as of 13 August 2005

- The bar is the symbol for marking of new waste (no place holder)
- The bar has to be used in conjunction with the crossed-out wheeled bin. Dimensional relationship shall be maintained when the size is altered. (The bar shall be  $h=0,3a$  or at least 1 mm in height)

## WEEE Symbol

DRAWING NOT  
TO SCALE