



Model No.: MOTO BUDS 450

Maximum RF power: 7dBm

Frequency Band: 2.402 - 2.480GHz

FCC ID: 2ARRB-MB450

Working temperature: 0°C - +45°C

IC: 20353-MB450



Quick Start Guide



## 1. At a glance

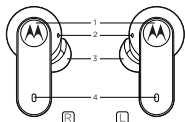


Fig. 1a

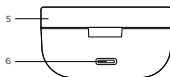


Fig. 1b

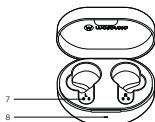


Fig. 1c

1. Multi-function buttons (MFB)
2. Microphones
3. Replaceable earcaps (size M)
4. LED indicators
5. Charging case
6. USB Type-C charging socket
7. Earbud charging contacts
8. Battery level indicator

## 2. Charge

### Charging case

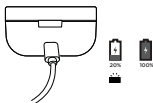


Fig. 2a

Plug the Type C cable into the USB-C charging port. The LED indicator flashes red when the battery level is <20% and flashes blue when it is >20%. It turns solid blue when charging is complete.

### Earbuds

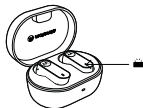


Fig. 2b

Put into the charging case. The red LEDs on both earbuds turn on until charging is complete.

### Fully charge before use

The device can be powered through a USB-C from any CE compliant power source that implement the European interface as requested by EN 301 489-52.

### 3. On/Off/Pair

1. **Turn on earbuds:** Turn on automatically when opening the charging case top lid.
2. **Turn off earbuds:** Put both earbuds into the charging case and fully close the charging case top lid. Then earbuds turn off automatically.
3. **Pairing:** Earbuds do pairing automatically when opening the charging case top lid. Select **MOTO BUDS 450** from the Bluetooth menu of your device.

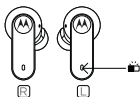


Fig. 3a



Fig. 3b

### 4. Fit and comfort

1. Choose the suitable earcap size.
2. Fit into the earbuds.

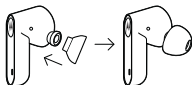
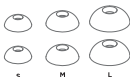


Fig. 4a

3. Insert the earbuds into ears and rotate to fit comfortably.



Fig. 4b



Fig. 4c

## 5. Operation

Call	Button
Answer/End a call	Left/right MFB: Tap once
Reject a call	Left/right MFB: Press and hold 2s
<b>3-way call</b>	
Pick up calls/Put calls on hold/switch calls	Left/right MFB: Tap once
Reject calls/Continue current call	Left/right MFB: Press and hold 2s
End current call and resume on hold calls	Left/right MFB: Tap twice
<b>Music</b>	
Play/Pause	Left/right MFB: Tap once
Previous track	Left/right MFB: Tap 3 times
Next track	Left/right MFB: Tap twice
<b>Activate voice assistant</b>	
Siri, Google	Left/right MFB: Press and hold 2s
<b>Factory reset</b>	
<ol style="list-style-type: none"><li>1. Switch off both earbuds.</li><li>2. Press and hold MFB for 5 seconds.</li><li>3. Tap MFB 4 times quickly. The LED indicator flashes purple for 2 seconds.</li><li>4. Put both earbuds into the charging case. Follow pairing instructions in section 3 to do pairing.</li></ol>	

## 6. LED status indicators

Power on	Flash blue for 1 second
Power off	Flash red for 2 seconds
Pairing	Flashes blue every 5 seconds (right earbud) Flashes red and blue alternately (left earbud)
Connected	Flashes blue every 5 seconds
Charging	Steady red
Fully charged	Off
Incoming call/on a call/call waiting	Flashes blue
Low battery level	Flashes red every 5 seconds
Factory reset	Flashes purple

Any changes or modifications not expressly approved by the party responsible for compliance could void the user's authority to operate this equipment.

This device complies with Part 15 of the FCC Rules. Operation is subject to the following two conditions:

(1) This device may not cause harmful interference, and

(2) This device must accept any interference received, including interference that may cause undesired operation. This device and its antenna(s) must not be co-located or operating in conjunction with any other antenna or transmitter.

Note:

This equipment has been tested and found to comply with the limits for a Class B digital device, pursuant to Part 15 of the FCC Rules. These limits are designed to provide reasonable protection against harmful interference in a residential installation. This equipment generates, uses and can radiate radio frequency energy and, if not installed and used in accordance with the instructions, may cause harmful interference to radio communications. However, there is no guarantee that interference will not occur in a particular installation. If this equipment does cause harmful interference to radio or television reception, which can be determined by turning the equipment off and on, the user is encouraged to try to correct the interference by one or more of the following measures:

- Reorient or relocate the receiving antenna.
  - Increase the separation between the equipment and receiver.
  - Connect the equipment into an outlet on a circuit different from that to which the receiver is connected.
  - Consult the dealer or an experienced radio/TV technician for help.
- The device has been evaluated to meet general RF exposure requirement. The device can be used in portable exposure condition without restriction

FCC ID: 2ARRB-MB450

Because the earbus is too small, the FCC ID number can only be printed on the charging box.

## IC Caution:

This device contains licence-exempt transmitter(s)/receiver(s) that comply with Innovation, Science and Economic Development Canada's licence-exempt RSS(s). Operation is subject to the following two conditions:

This device may not cause interference.

This device must accept any interference, including interference that may cause undesired operation of the device.

L'émetteur/récepteur exempt de licence contenu dans le présent appareil est conforme aux CNR d'Innovation, Sciences et Développement économique Canada applicables aux appareils radio exempts de licence. L'exploitation est autorisée aux deux conditions suivantes :

L'appareil ne doit pas produire de brouillage;

L'appareil doit accepter tout brouillage radioélectrique subi, même si le brouillage est susceptible d'en compromettre le fonctionnement.

L'appareil a été évalué pour répondre aux exigences générales d'exposition aux RF. L'appareil peut être utilisé dans des conditions d'exposition portables sans restriction

Manufactured, distributed or sold  
by Meizhou Guo Wei Electronics Co.  
LTD., official licensee for this product.  
MOTOROLA and the Stylized M Logo  
are trademarks or registered trademarks  
of Motorola Trademark Holdings, LLC.  
and are used under license. All other  
trademarks are the property of their  
respective owners. © 2022 Motorola  
Mobility LLC. All rights reserved.

Version 2.0 (EN\_EU&NA)



This TRUE WIRELESS EARBUDS meets the government's requirements for exposure to radio waves. The guidelines are based on standards that were developed by independent scientific organizations through periodic and thorough evaluation of scientific studies. The standards include a substantial safety margin designed to assure the safety of all persons regardless of age or health.

**FCC RF Exposure Information and Statement** The SAR limit of USA (FCC) is 1.6 W/kg averaged over one gram of tissue. This device was tested for typical body-worn operations with the back of the handset kept 0cm from the body. To maintain compliance with FCC RF exposure requirements, use accessories that maintain a 0cm separation distance between the user's body and the back of the handset. The use of belt clips, holsters and similar accessories should not contain metallic components in its assembly. The use of accessories that do not satisfy these requirements may not comply with FCC RF exposure requirements, and should be avoided.

#### **Body-worn Operation**

This device was tested for typical body-worn operations. To comply with RF exposure requirements, a minimum separation distance of 0 cm must be maintained between the user's body and the handset, including the antenna. Third-party belt-clips, holsters, and similar accessories used by this device should not contain any metallic components. Body-worn accessories that do not meet these requirements may not comply with RF exposure requirements and should be avoided. Use only the supplied or an approved antenna.