

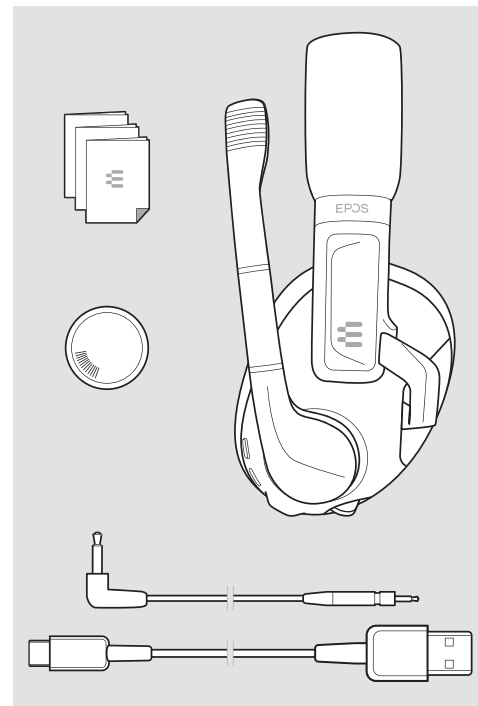
EPOS

H3 Hybrid
Bluetooth® Gaming headset

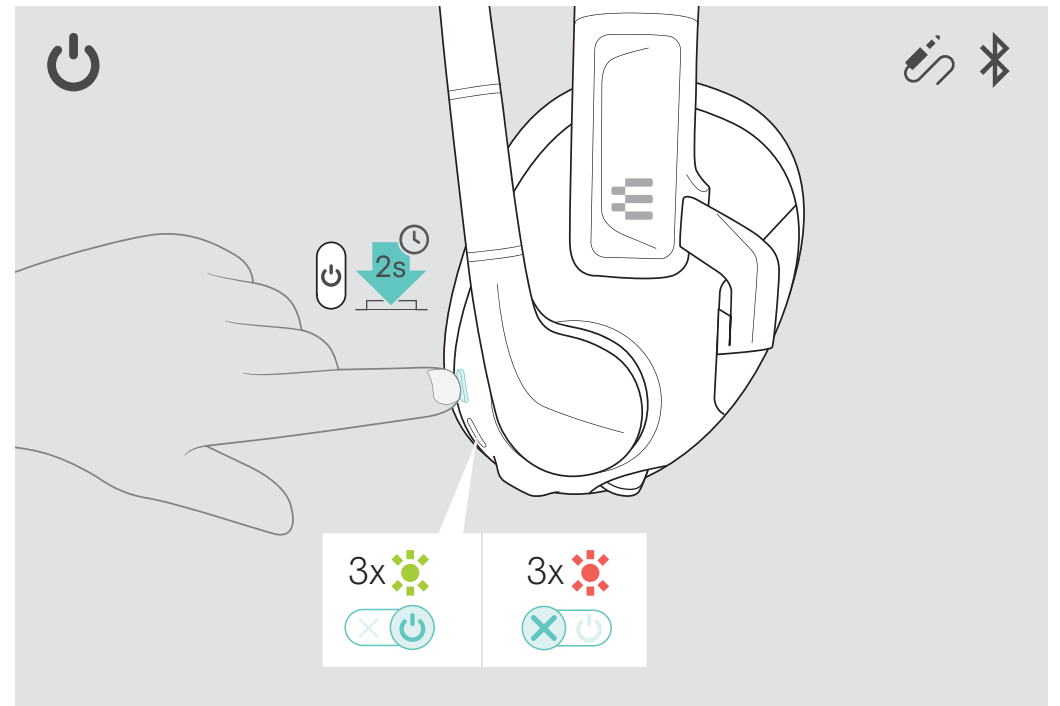
Quick Guide

Model: SCBT25

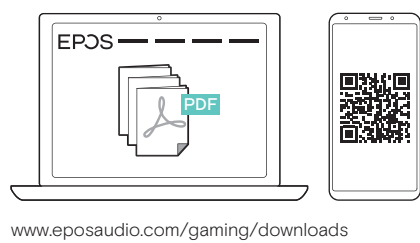
Package contents



Switching the headset on/off



More features: User Guide

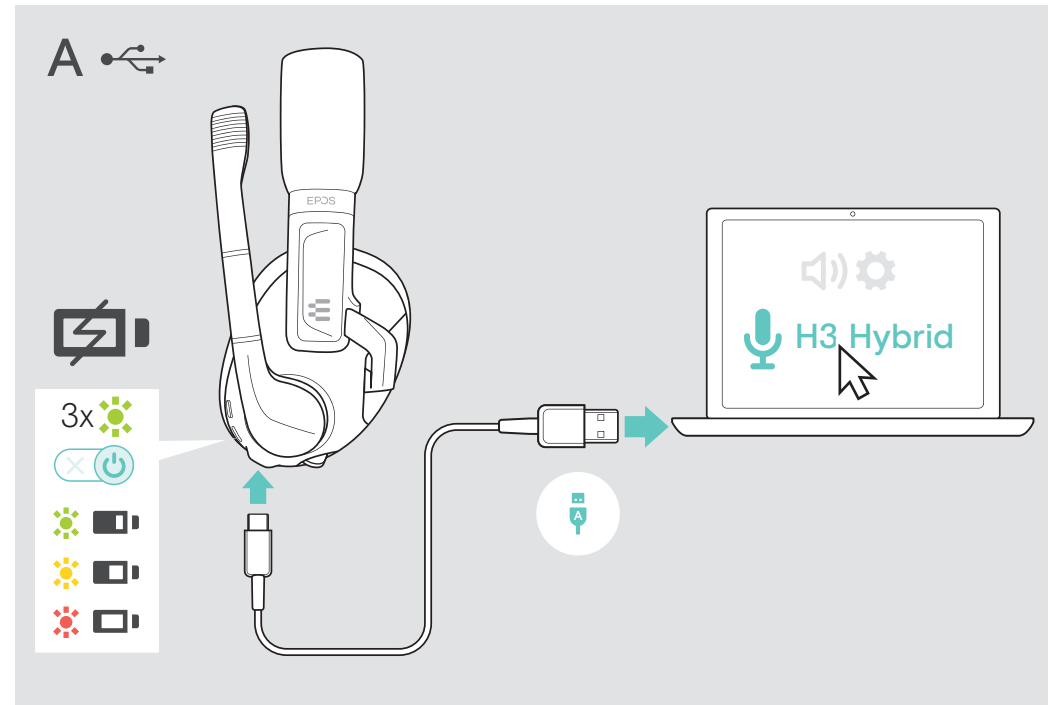


FAQs & support:
www.eposaudio.com/gaming/support

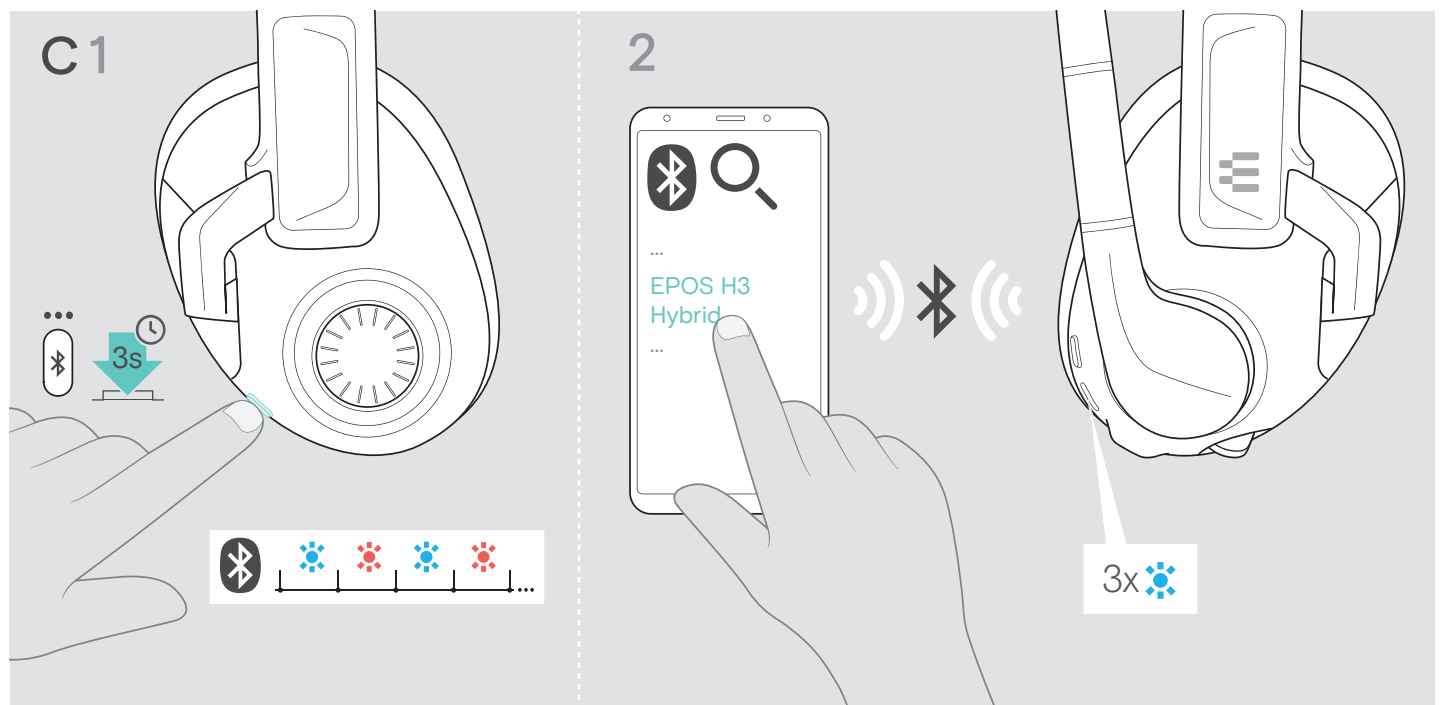
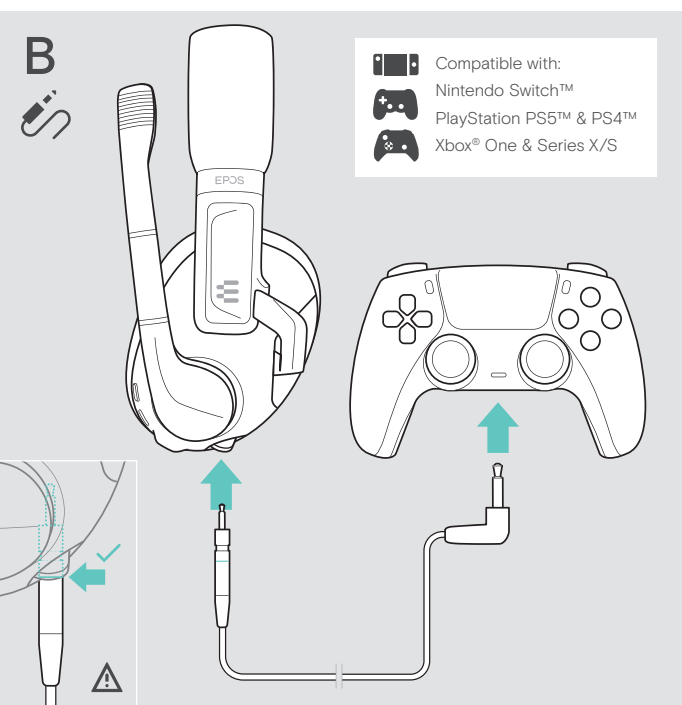
Connection possibilities



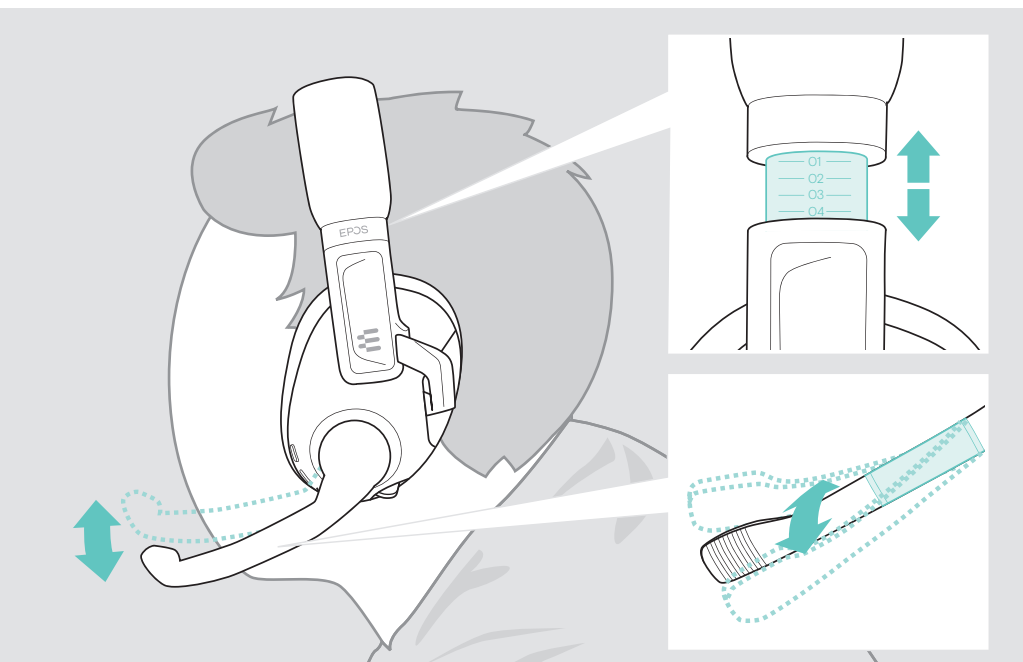
Connecting to PC via USB & charging the battery



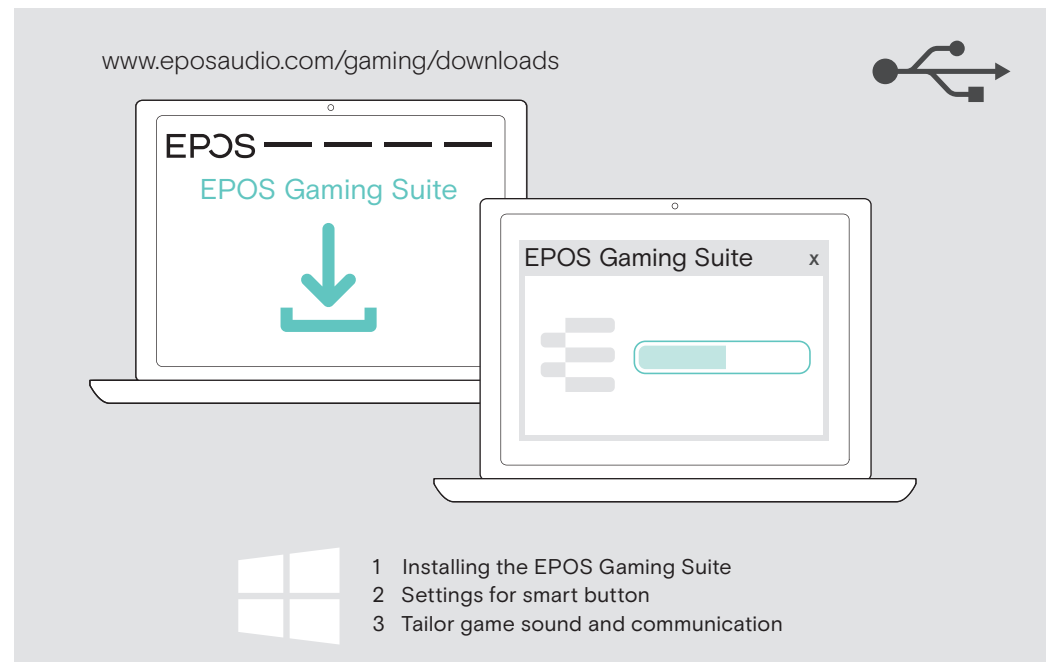
Connecting the headset via console cable or Bluetooth



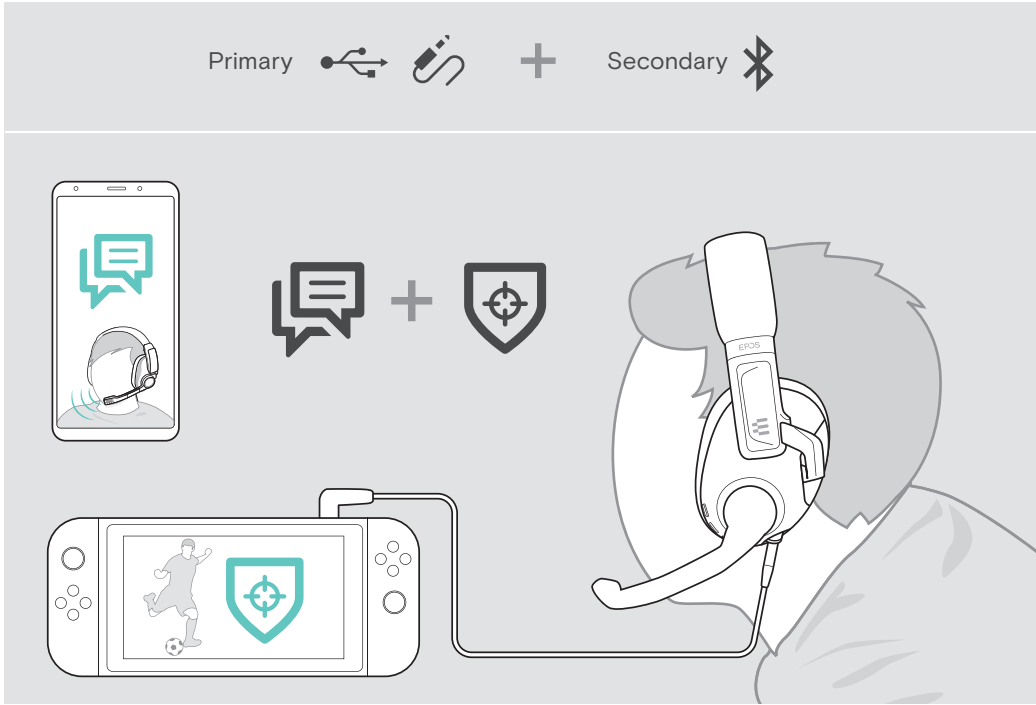
Adjusting and wearing the headset



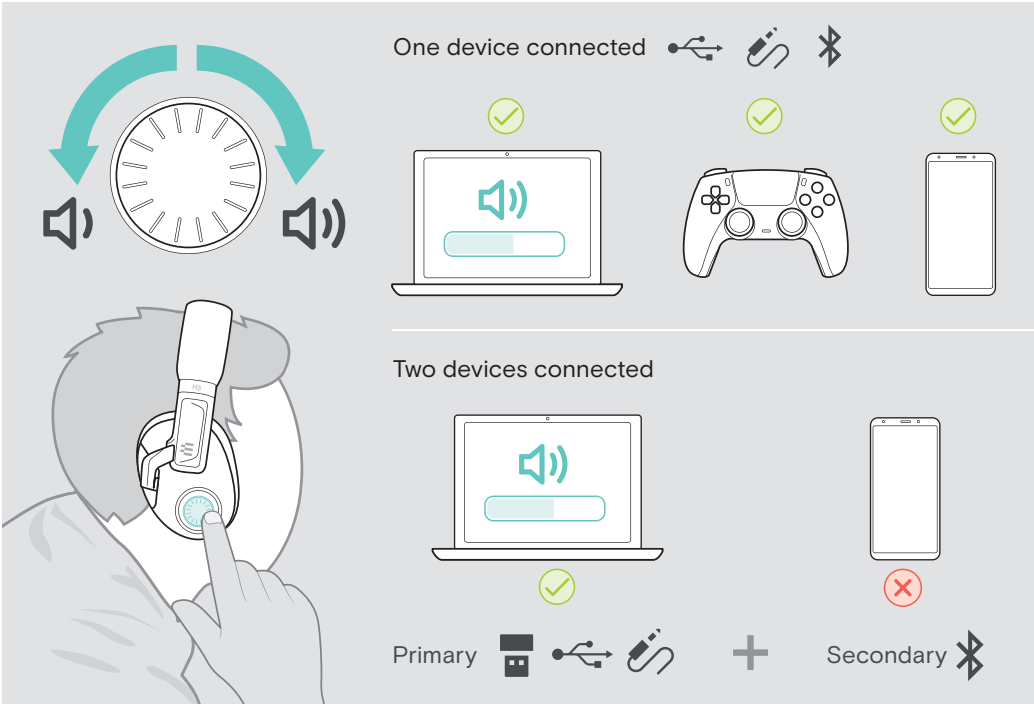
Enhance your audio experience



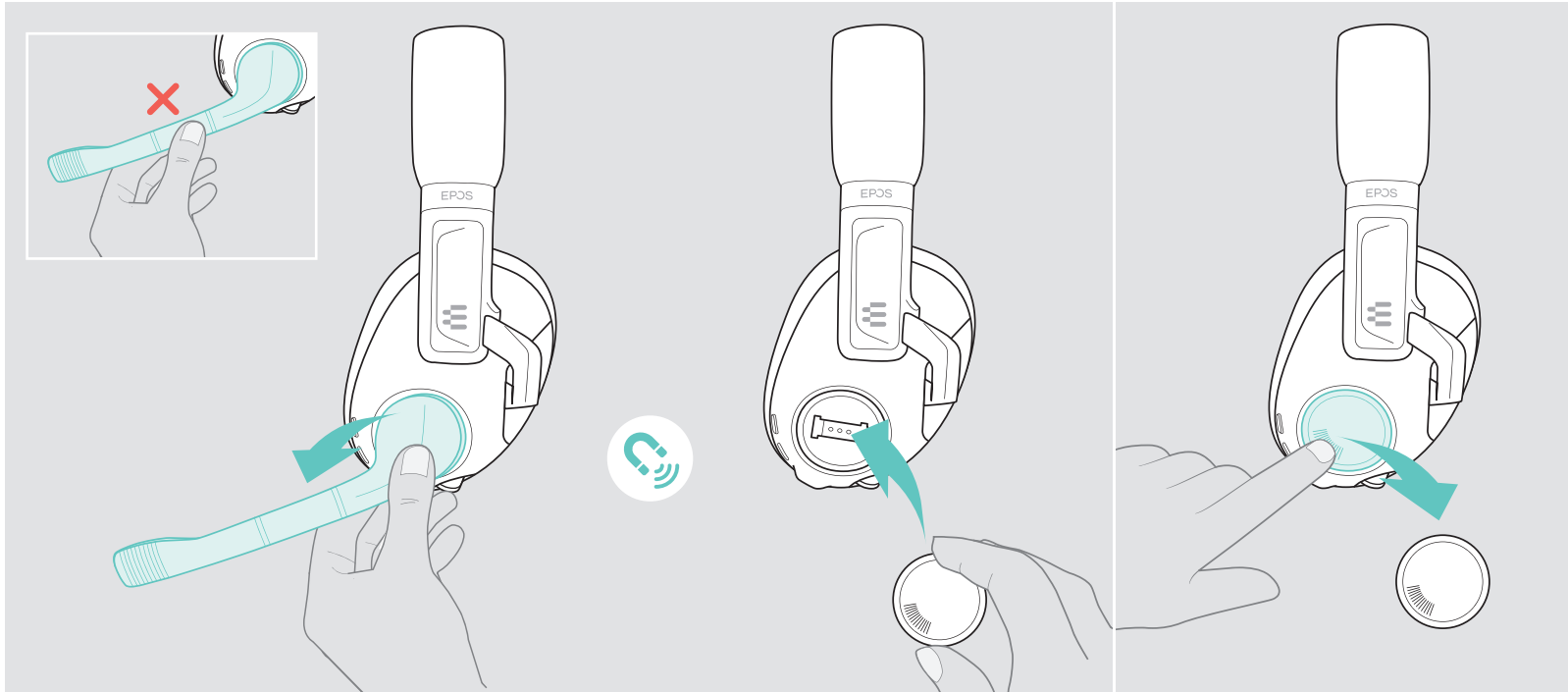
Mixing audio: two devices connected



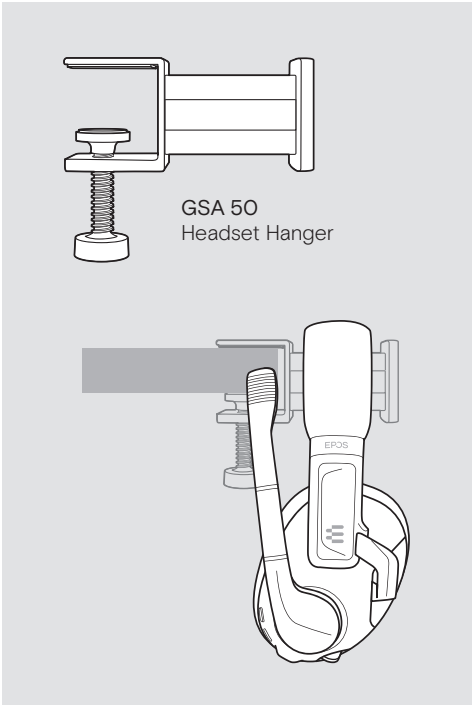
Adjusting the volume



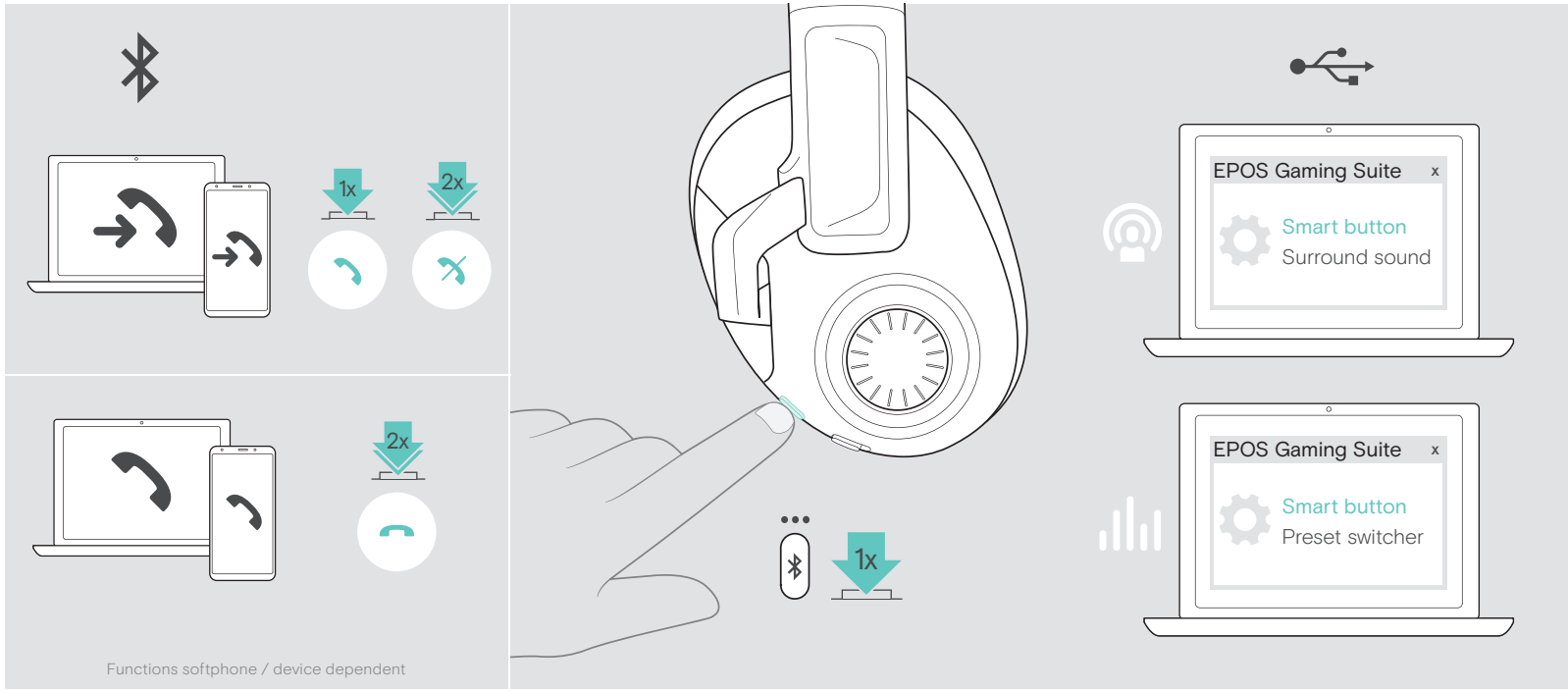
Using the headset on the go



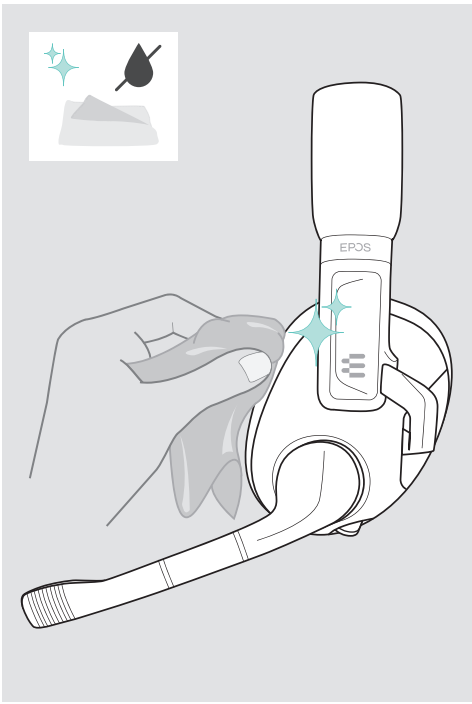
Accessories



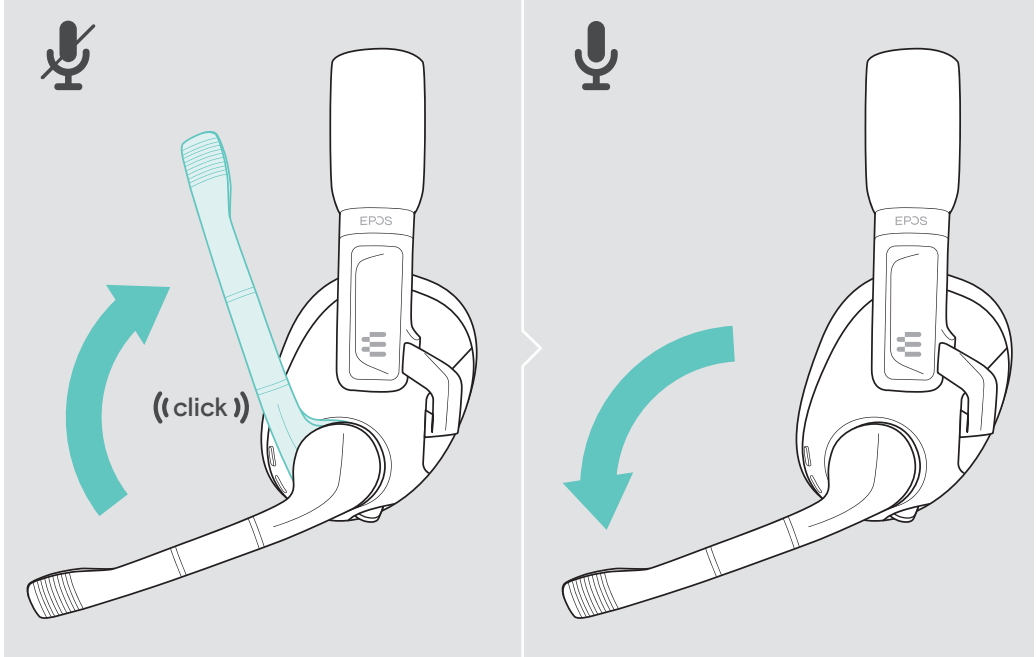
Using the Smart button



Cleaning the product



Muting the microphone



Replacing the ear pads

