

Date: 2021/10/8

Right ear headset BT 3DH5 2402 Back 0mm

Communication System: UID 0, BT(0) (0); Communication System Band: BT; Frequency: 2402 MHz;

Medium parameters used (interpolated): $f = 2402$ MHz; $\sigma = 1.812$ S/m; $\epsilon_r = 40.766$; $\rho = 1000$ kg/m³

Phantom section: Flat Section

DASY Configuration:

- Probe: EX3DV4 - SN7383; ConvF(7.75, 7.75, 7.75); Calibrated: 2020/11/30;
- Sensor-Surface: 1.4mm (Mechanical Surface Detection), $z = -9.0, 31.0$
- Electronics: DAE3 Sn427; Calibrated: 2021/4/9
- Phantom: ELI v5.0; Type: QDOVA002AA; Serial: 1235
- DASY52 52.8.8(1222); SEMCAD X 14.6.10(7331)

Configuration/Body/Area Scan (7x8x1): Measurement grid: $dx=12$ mm, $dy=12$ mm

Maximum value of SAR (measured) = 0.0602 W/kg

Configuration/Body/Zoom Scan (5x5x5mm, graded), dist=1.4mm (7x7x5)/Cube 0:

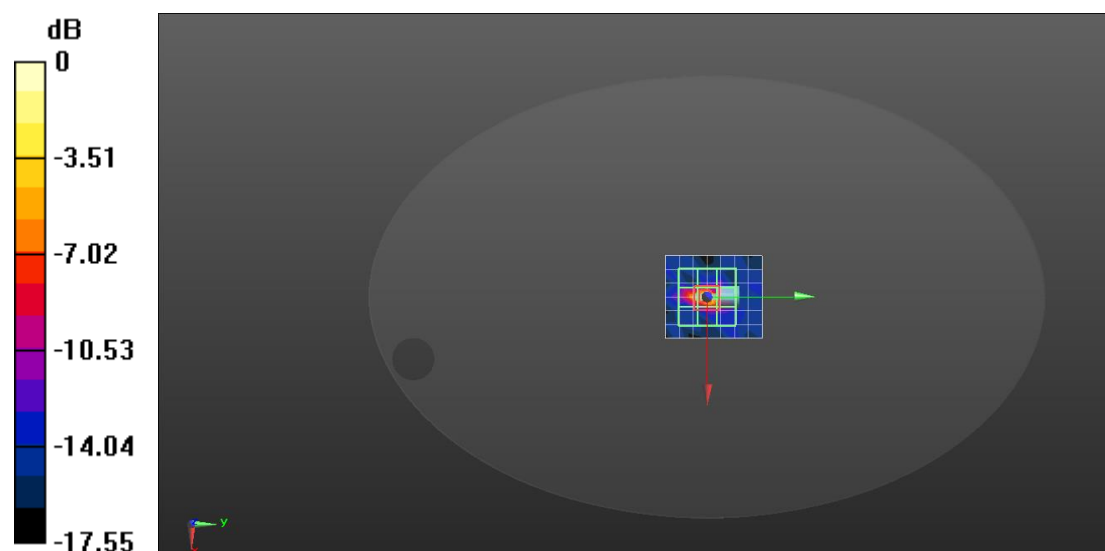
Measurement grid: $dx=5$ mm, $dy=5$ mm, $dz=5$ mm

Reference Value = 4.576 V/m; Power Drift = 0.13 dB

Peak SAR (extrapolated) = 0.243 W/kg

SAR(1 g) = 0.025 W/kg; SAR(10 g) = 0.00538 W/kg

Maximum value of SAR (measured) = 0.0612 W/kg



0 dB = 0.0602 W/kg = -12.20 dBW/kg

Right ear headset BLE 2440 Back Side 0mm

Communication System: UID 0, BLE (0); Communication System Band: BLE; Frequency: 2440 MHz;

Medium parameters used (interpolated): $f = 2440$ MHz; $\sigma = 1.812$ S/m; $\epsilon_r = 40.41$; $\rho = 1000$ kg/m³

Phantom section: Flat Section

DASY Configuration:

- Probe: EX3DV4 - SN7383; ConvF(7.75, 7.75, 7.75); Calibrated: 2020/11/30;
- Sensor-Surface: 1.4mm (Mechanical Surface Detection), $z = -9.0, 31.0$
- Electronics: DAE3 Sn427; Calibrated: 2021/4/9
- Phantom: ELI v5.0; Type: QDOVA002AA; Serial: 1235
- DASY52 52.8.8(1222); SEMCAD X 14.6.10(7331)

Configuration/Body/Area Scan (6x6x1): Measurement grid: $dx=12$ mm, $dy=12$ mm

Maximum value of SAR (measured) = 0.0595 W/kg

Configuration/Body/Zoom Scan (5x5x5mm, graded), dist=1.4mm (7x7x5)/Cube 0:

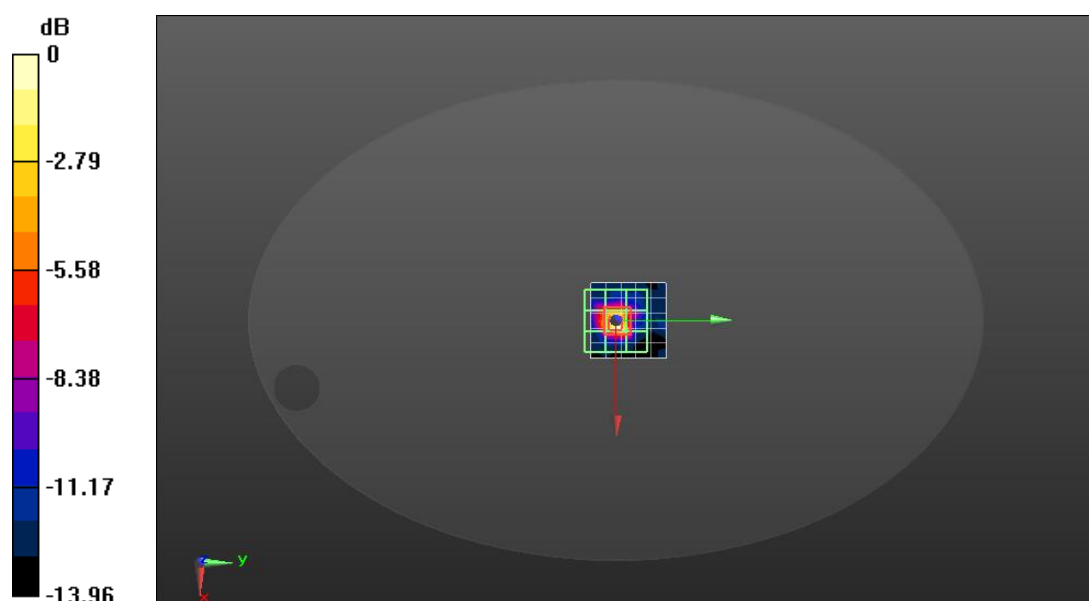
Measurement grid: $dx=5$ mm, $dy=5$ mm, $dz=5$ mm

Reference Value = 5.692 V/m; Power Drift = -0.18 dB

Peak SAR (extrapolated) = 0.454 W/kg

SAR(1 g) = 0.051 W/kg; SAR(10 g) = 0.013 W/kg

Maximum value of SAR (measured) = 0.222 W/kg



0 dB = 0.0595 W/kg = -12.25 dBW/kg