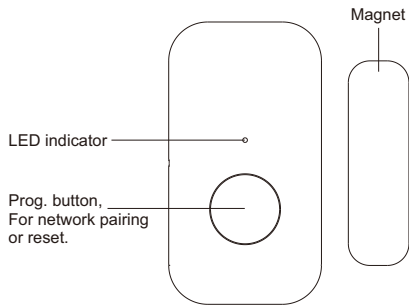


# Zigbee Door/Window Sensor



**Important:** Read All Instructions Prior to Installation

## Function introduction



## Product Data

Radio Frequency	2.4GHz
Power Supply	3VDC (CR2032 Batteries)
Operating temperature	0 to 40°C
Relative humidity	8% to 80%
Dimensions	Transmitter: 49x26.5x10mm, Magnet: 35.5x10.5x10mm

## Safety & Warnings

- This device contains button lithium batteries that shall be stored and disposed properly
- DO NOT expose the device to moisture.

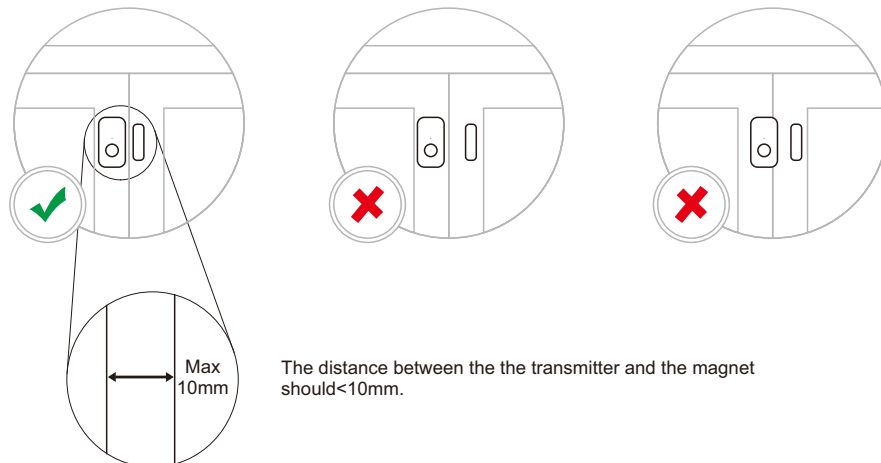
## Product Description

The Zigbee Door Window sensor is a wireless, battery powered contact sensor, compatible with the Zigbee 3.0 standard. The device can be operated intelligently via working with a Zigbee gateway to communicate with other devices. It is a zigbee low-energy wireless door/window sensor that makes you know the opening/closing status of door and window by separating the magnet from the transmitter. Connect it with the gateway which supports automation function and you can create a smart scene to trigger other devices.

## Physical Installation

1. Peel off the protective layer from the sticker on the sensor.
2. Stick the sensor onto the door/window frame.
3. Peel off the protective layer from the sticker on the magnet.
4. Stick the magnet onto the moving part of the door/window, no further than 10mm from the sensor.

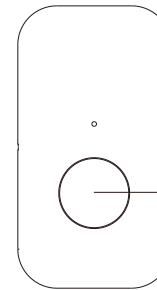
## Positioning of the Sensor and the magnet:



The distance between the the transmitter and the magnet should<10mm.

## Operations

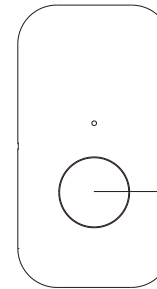
### 1. Added the device to a Zigbee gateway



**Step 1:** From your ZigBee gateway or hub interface, choose to add device and enter Pairing mode as instructed by the gateway.

**Step 2:** Press and hold the Prog. button on the device for 5s until the LED indicator flashes three times, which means the device has entered the pairing mode, then the indicator will flash rapidly to indicate successful pairing.

### 2. Factory reset the device

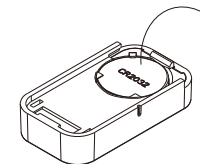
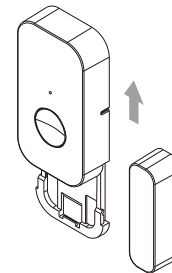


Press and hold the Prog. button on the device for 5s until the LED indicator flashes three times, which means the device is reset to factory default and then enter network pairing mode.

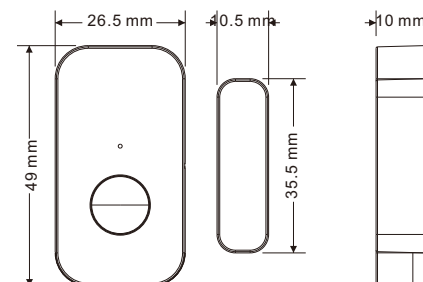
## How to replace a battery

1. Pull up the main part of the transmitter

2. Replace the battery and then insert the transmitter back into the bracket



## Product Size



Battery Warnings & Safty

Warnings and Statements:

This product contains a CR Coin Cell Lithium Battery and meets the requirements of the **16 CFR Part 1263**. For your safety and to ensure proper operation, please carefully read and understand the following warnings and statements.

**⚠ WARNING**

- **INGESTION HAZARD:** This product contains a button cell or coin battery.
- **DEATH** or serious injury can occur if ingested.
- A swallowed button cell or coin battery can cause **Internal Chemical Burns** in as little as **2 hours**.
- **KEEP** new and used batteries **OUT OF REACH of CHILDREN**
- **Seek immediate medical attention** if a battery is suspected to be swallowed or inserted inside any part of the body.

Statements:

- INDOOR USE ONLY
- Remove and immediately recycle or dispose of used batteries according to local regulations and keep away from children. Do NOT dispose of batteries in household trash or incinerate.
- Even used batteries may cause severe injury or death.
- Call a local poison control center for treatment information.
- Do not install any battery other than CR2032 or its equivalent.
- Ensure the CR2032 operates at the nominal battery voltage (3VDC).
- Non-rechargeable batteries are not to be recharged.
- Do not force discharge, recharge, disassemble, heat above (manufacturer's specified temperature rating) or incinerate. Doing so may result in injury due to venting, leakage or explosion resulting in chemical burns.
- Ensure the batteries are installed correctly according to polarity (+ and -).
- Do not mix old and new batteries, different brands or types of batteries, such as alkaline, carbon-zinc, or rechargeable batteries.
- Remove and immediately recycle or dispose of batteries from equipment not used for an extended period of time according to local regulations.
- Always completely secure the battery compartment. If the battery compartment does not close securely, stop using the product, remove the batteries, and keep them away from children.
- If the battery leaks, do not touch or smell it, wipe the leakage from the battery compartment, and thenreplace the battery with a new one.
- If a battery leaks and the material contacts your skin or clothing, flush the exposed area thoroughly withrunning water. In case of eye contact, flush thoroughly with copious amounts of clean running water andseek immediate medical assistance.

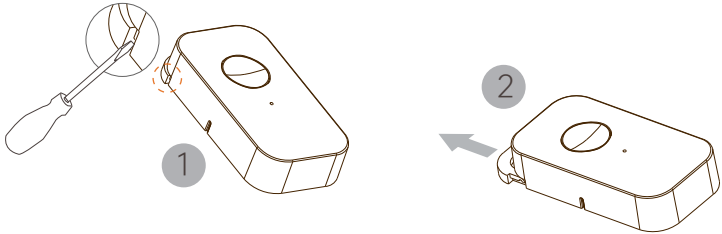
Battery information:

Battery	Battery Type	Operation Voltage	Diameter
CR2032	Button Cell	3VDC	20mm(0.787inch)

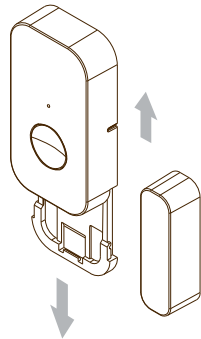
How to install or replace a battery:

This product is designed with a battery compartment that is secured to prevent unauthorized access, especially by children.This safety feature ensures that the battery remains safely enclosed, minimizing the risk of accidental removal or exposure.

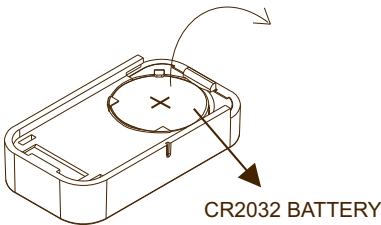
1. Use a suitable tool or your hand, push the notch to loosen the rear cover, then push it out further.



2.Slide down the rear cover to open the battery compartment.



3.Take out the battery.



BATTERY	Description
+	Note to distinguish between the + or - of the battery.
-	

5.Note to distinguish between the + or - of the battery, install the new battery in the battery compartment correctly, and push the compartment into the sensor, then check and make sure that the battery compartment got locked and secured.

Disposing of used batteries:

- When disposing of used batteries, please comply with governmental regulations or environmental public institutions' rules that apply in your country/area.
- Note and follow the **STATEMENTS** in **WARNINGS AND STATEMENTS**.

FCC Statement

This equipment has been tested and found to comply with the limits for a Class B digital device, pursuant to Part 15 of the FCC Rules. These limits are designed to provide reasonable protection against harmful interference in a residential installation. This equipment generates uses and can radiate radio frequency energy and, if not installed and used in accordance with the instructions, may cause harmful interference to radio communications. However, there is no guarantee that interference will not occur in a particular installation. If this equipment does cause harmful interference to radio or television reception, which can be determined by turning the equipment off and on, the user is encouraged to try to correct the interference by one or more of the following measures:

- Reorient or relocate the receiving antenna.
- Increase the separation between the equipment and receiver.
- Connect the equipment into an outlet on a circuit different from that to which the receiver is connected.
- Consult the dealer or an experienced radio/TV technician for help.

This device complies with part 15 of the FCC Rules. Operation is subject to the following two conditions: (1)This device may not cause harmf errence, and (2) this device must accept any interference received, including interference that may cause undesired operation. Changes or modifications not expressly approved by the party responsible for compliance could void the user's authority to operate the equipment.The distance between user and products should be no less than 20cm