

Go to www.vtechphones.com to register your product for enhanced warranty support and the latest Vtech product news.

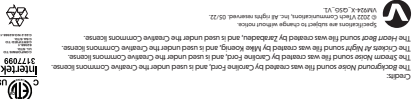


Pan and Tilt Video Baby Monitor

For more support information



vttech® Quick start guide



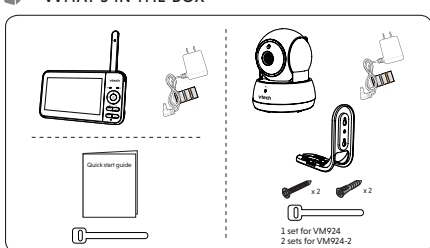
Power requirements	Parent unit: 3.6V, 2600mAh, 9.36Wh Li-ion battery Baby unit power adapter: Output: 5V DC 1A
Maximum effective range	Maximum power delivered by FCC and IC. Actual operating range may vary according to environmental conditions at the time of use.
LCD	5" Color LED (270°)
Channels	32
Transmit frequency	Parent unit: 2405 - 2425 MHz Baby unit: 2405 - 2425 MHz
Frequency control	CPSA controlled PLL synthesizer

TECHNICAL SPECIFICATIONS

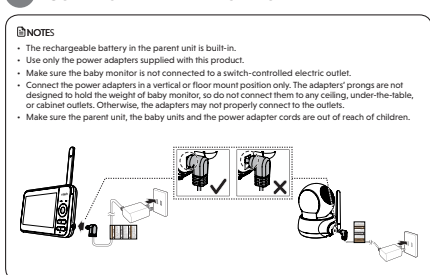
IMPORTANT SAFETY INSTRUCTIONS

- The applied nameplate is located at the bottom of the baby unit's base.
- When using your equipment, basic safety precautions should be followed to reduce the risk of fire, electric shock and injury, including the following:
- Follow all warnings and instructions marked on the product.
 - Do not use the product if you are not familiar with its use.
 - CAUTION:** Do not install the baby unit at a height where it may be reached by children.
 - This product is not a substitute for adult supervision of the infant. Always keep the infant in your sight and under your control at all times. This product is not to be used as a substitute for proper supervision for any given period of time. Further, this is not a medical device and should not be used as such. This product is intended to assist you in supervising your baby.
 - Do not use this product near water, for example, in a bathroom, laundry tub or swimming pool, or in a wet basement or shower.
 - CAUTION:** Use only the battery provided. There may be a risk of explosion if a wrong type of battery is used for the parent unit. The battery cannot be subjected to high or low extreme temperatures and low air pressure at high altitude during use, storage or transportation. Dispose of battery properly in a hot, dry, or mechanically crushing or cutting, or the battery can result in an explosion. Leaving the battery in an extremely high temperature surrounding environment can result in an explosion or the leakage of flammable liquid or gas. Battery subjected to extremely low air pressure may result in an explosion or the leakage of flammable liquid or gas. Dispose of used battery according to the information in the user manual.
 - Use only the adapter included with this product. Incorrect adapter polarity or voltage can seriously damage the product.
 - Power adapter information:**
Parent unit output: 5V DC 1A
Flick-Tite Communications, Inc. Ltd.
Model: VT05UE1050000
Baby unit output: 5V DC 1A
Model: VT05UE1050000
 - Rechargeable battery information:**
Overload Power Energy Co., Ltd.
Li-ion battery, 3.6V, 2600mAh, 9.36Wh
Model: IC05UE1050000
The power adapters are intended to be correctly oriented in a vertical or floor mount position. (Other prongs are not designed to hold the plug in place if it is plugged into a ceiling, under the table or cabinet).
 - For replaceable equipment, the user manual shall be installed near this equipment and shall be easily accessible.
 - Imply the product from the wall outlet (daisy chain) or do not use the plug into a power outlet.
 - Do not cut off the power adapters to replace them with other plugs, as this causes a hazardous situation.
 - Do not allow anything to rest on the power cords. Do not install this product where the cords may be walked on or tripped over.
 - This product should be inspected only from the type of power source indicated on the marking label. If you are not sure of the type of power supply in your home, consult your dealer or local power company.
 - Do not overload wall outlets or use an extension cord.
 - Do not place this product on an unstable table, shelf, stand or other unstable surface.
 - This product should not be placed in any area where proper ventilation is not provided. Slots and openings in the back or bottom of the product are provided for ventilation. To protect from overheating, these openings must not be blocked by placing the product on a soft surface such as a bed, sofa or rug. The product should never be placed near or over a radiator or heat register.
 - Never push objects of any kind into this product. Doing so may damage the internal parts. Never spill liquid of any kind on the product.
 - To reduce the risk of electric shock, do not disassemble this product. Do not take it to an authorized service facility. Opening or removing parts of the product other than specified areas may void the warranty. Do not use the product if you are not familiar with its use.
 - You should test the sound reception every time you turn on the unit or the battery.
 - Periodically examine all components for damage.
 - There is a very low risk of injury when using certain electronic devices, such as baby monitors, cordless telephones, etc. To protect your privacy, please make sure this product has never been used before purchase, use the baby monitor periodically by powering off and then powering on the unit, and power off the baby monitor if you will not use it for some time.
 - Children should be supervised to ensure that they do not play with the product.
 - The product is not intended for use by persons (including children) with reduced physical, sensory or mental capabilities, or lack of experience and knowledge, unless they have been given supervision or instruction concerning use of the appliance by a person responsible for their safety.
- SAVE THESE INSTRUCTIONS**
- Warnings:**
- Use and store the product at a temperature between 32°F and 104°F.
 - Do not expose the product to extreme cold, heat or direct sunlight. Do not put the product close to a heating source.
 - Batteries should not be exposed to excessive heat such as bright sunlight or fire.
 - Warning—Strangulation Hazard:**
Children have STRANGLER in cords.
Keep this cord out of the reach of children (more than 3 ft (0.9m) away). Do not remove this tag.
 - Never place the baby unit(s) inside the baby's crib or playpen. Move over the baby unit(s) or parts on the floor when sleeping.
 - Other electronic products may cause interference with your baby monitor. By placing your baby monitor as far away from these electronic devices as possible: wireless routers, radios, cellular telephones, intercoms, room monitors, televisions, personal computers, kitchen appliances and other electronic devices.
- Precautions for users of implanted cardiac pacemakers:**
- Cardiac pacemakers applies only to digital cordless devices. Wireless Technology Research, LLC (WTR), an independent research entity, led a multidisciplinary evaluation of the interference between wireless devices and implanted cardiac pacemakers. Supported by the U.S. Food and Drug Administration, WTR's recommendations to physicians are:
- Pacemaker patients**
- Should keep wireless devices at least six inches from the pacemaker.
 - Should NOT place wireless devices directly over the pacemaker. Such as in a breast pocket, when it is turned on.
- WTR's evaluation did not identify any risk to bystanders with this Vtech product carrying with all standards regarding electromagnetic fields (EMF). If handled properly and according to the instruction in the user's manual, the product is safe to be used based on scientific evidence available today.

WHAT'S IN THE BOX



1 CONNECT THE BABY MONITOR

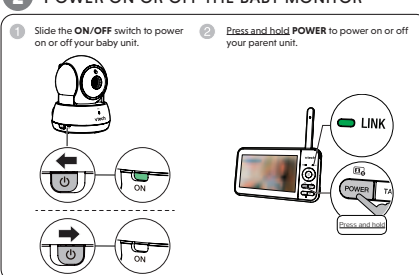


1 CONNECT THE BABY MONITOR (CONT'D)

- Charge the parent unit battery**
When you have connected and turned on the parent unit, the battery will be charged automatically.
- NOTES**
- Before using the baby monitor for the first time, charge the parent unit battery for 12 hours. When the parent unit battery is fully charged, the battery icon becomes solid.
 - It takes longer to charge the battery when the parent unit is turned on. To shorten the charging time, turn the parent unit off while charging.
 - The standby time varies depending on the sensitivity level you set, your actual use and the age of the battery.

BATTERY INDICATORS	BATTERY STATUS	ACTION
The screen displays light flashes.	The battery has very little power and can only be used for a short time.	Charge without interruption (about 30 minutes).
The battery icon becomes solid .	The battery is fully charged.	To keep the battery charged, connect the unit to AC power when not in use.

2 POWER ON OR OFF THE BABY MONITOR



3 POSITIONING THE BABY MONITOR

- CAUTION**
- Keep the baby unit out of the reach of your baby. Never place or mount the baby unit inside the baby's crib or playpen.
- NOTES**
- Before using the baby monitor for the first time, charge the parent unit battery for 12 hours. When the parent unit battery is fully charged, the battery icon becomes solid.
 - It takes longer to charge the battery when the parent unit is turned on. To shorten the charging time, turn the parent unit off while charging.
 - The standby time varies depending on the sensitivity level you set, your actual use and the age of the battery.
- CAUTION**
- The default volume of your parent unit is level 3, and the maximum volume is level 5. If you repeatedly hear high-pitched screaming noise from your baby monitor while positioning:
 - Make sure your baby unit and parent unit are more than 3 feet (1 meter) apart, OR
 - Turn down the volume of your parent unit.
- NOTE**
- To avoid interference from other electronic devices, place your baby monitor at least 3 feet (1 meter) away from devices such as wireless routers, microwaves, cell phones and computers.

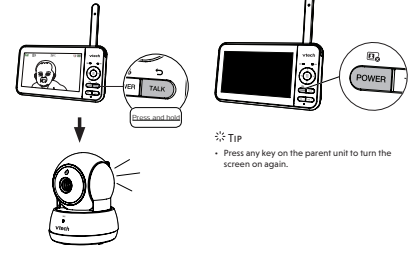
4 STATUS CHECK

- Once you power on both your baby unit and parent unit, your parent unit displays image from the baby unit, and the LINK LED light turns on.
- The baby unit's POWER LED light turns on.

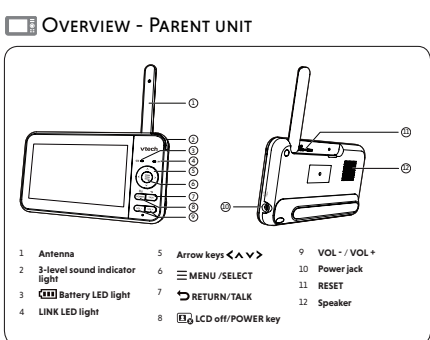
BASIC OPERATION - PARENT UNIT

- Use the menu**
Press to enter the menu, choose a menu item, or save a setting. You can use the parent unit for advanced settings or operations, such as to play or stop the baby unit lullaby, or to adjust the baby unit sound sensitivity.
- While in the menu:
- Press or to scroll among the menu options.
 - Press to select an item, or to save a setting.
 - Press or to scroll among the sub-menus, or to adjust a setting.
 - Press to return to the previous menu options without changing the current setting.
 - Press to return to live video.

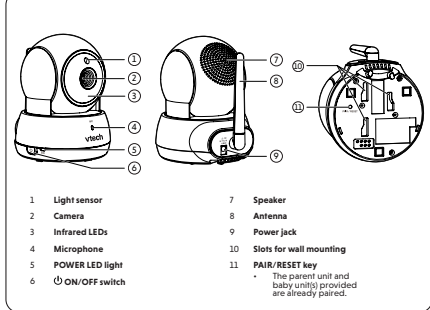
- Talk to your baby unit**
Press and hold TALK and speak to your parent unit. Your voice is transmitted to the baby unit. Release TALK when finish talking and hear your baby again.
- Turn off the screen**
Press POWER to put the monitor to sleep. The screen will be switched off, and you will still hear sounds from the baby unit.



- Adjust parent unit volume**
Press VOL- / VOL+ to adjust your parent unit speaker volume.
- Zoom**
- Press to enter the menu.
 - Press or to select , then press to confirm.
 - Press or to choose either or , depending on how many times you want to zoom in, then press to confirm.



OVERVIEW - BABY UNIT



- NEED HELP?**
- For operations and guides to help you use your video monitor, and for the latest information and support, check out our online help topics and online FAQs.
- Use your smartphone or mobile device to access our online help.
- Go to <https://help.vtechphones.com/vm924-2> or <https://help.vtechphones.com/vm924-2-qr>
 - Scan the QR code on the right. Launch the camera app on your smartphone or tablet. Hold the device's camera up to the QR code and frame it. Tap the notification to be redirected to the online help page.
 - If the QR code is not clearly displayed, adjust your camera's focus by moving your device closer or further away until it is clear.
- You can also call our Customer Support at 1 (800) 595-9511 (in US) or 1 (800) 267-7377 (in Canada) for help.

PARENT UNIT ICONS

- Main menu icons**
- Main menu Sub-menu**
- Brightness**
- Adjust the parent unit's LCD brightness.
- Lullaby**
- Play/Stop lullaby
 - Select one of the soothing sounds, or white noise.
 - Select one of the five melodies.
 - Play all melodies.
 - Set timer to stop playing the selected melody or soothing sound.
- VOX (Voice Activated Alert) Settings**
- VOX sound sensitivity level**
- You can adjust VOX sensitivity levels to activate the parent unit when the baby unit detects sounds that exceed a certain volume. See **Sound sensitivity and sound activation** section.

- Main menu Sub-menu**
- VOX (Voice Activated Alert) Settings (continued)**
- ON / OFF Turn on/off sound activation**
- Set sound activation on or off.
 - When it is on, and the baby unit does not detect sound, the parent unit screen stays off to save power. Once a sound is detected, the parent unit screen and speaker automatically turn on, and you will be able to see and hear your baby. The parent unit will turn off again after 50 seconds of no sound detection.
- NOTE**
- When the parent unit screen is off and it receives alerts, for example, link lost between parent unit and baby unit, or battery is low, the parent unit screen and speaker will turn on for 10 seconds.
- Alert Tone Settings**
- Set the parent unit to beep when the battery is low.
 - Set the parent unit to beep when the link between the parent unit and the baby unit is lost.
 - Set the confirmation tone on or off when selecting an option in the menu.
 - Set the parent unit to beep when the baby unit detects sounds while in Split mode (For pairing with VM924-2 only).
- Main menu Sub-menu**
- Temperature**
- ON / OFF**
- Turn on/off temperature alert tone.
 - Set the parent unit to beep whenever the room temperature detected by the baby unit falls outside of the set temperature range.
 - Set the minimum temperature.
 - Set the maximum temperature.
 - Set temperature display in Fahrenheit (°F) or Celsius (°C).
- Baby Unit Settings**
- Baby unit speaker volume**
- Adjust the baby unit's speaker volume.
- Monitoring Mode (For pairing with VM924-2 only)**
- 1 2 2 2**
- Single CAM mode**
The screen displays images only from the selected baby unit in full screen.
 - Split mode**
The screen displays images from all the paired baby units at the same time in split view.
 - Patrol mode**
The screen displays a single cam view that transitions to a different baby unit every 10 seconds.

