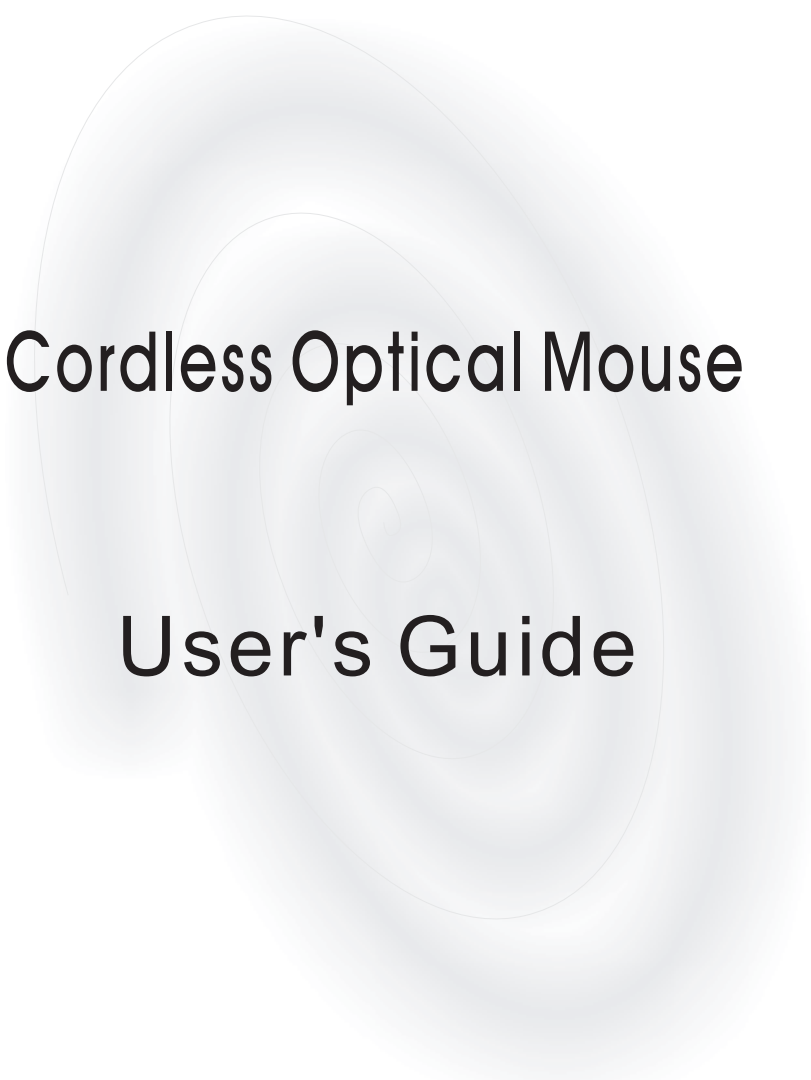


---

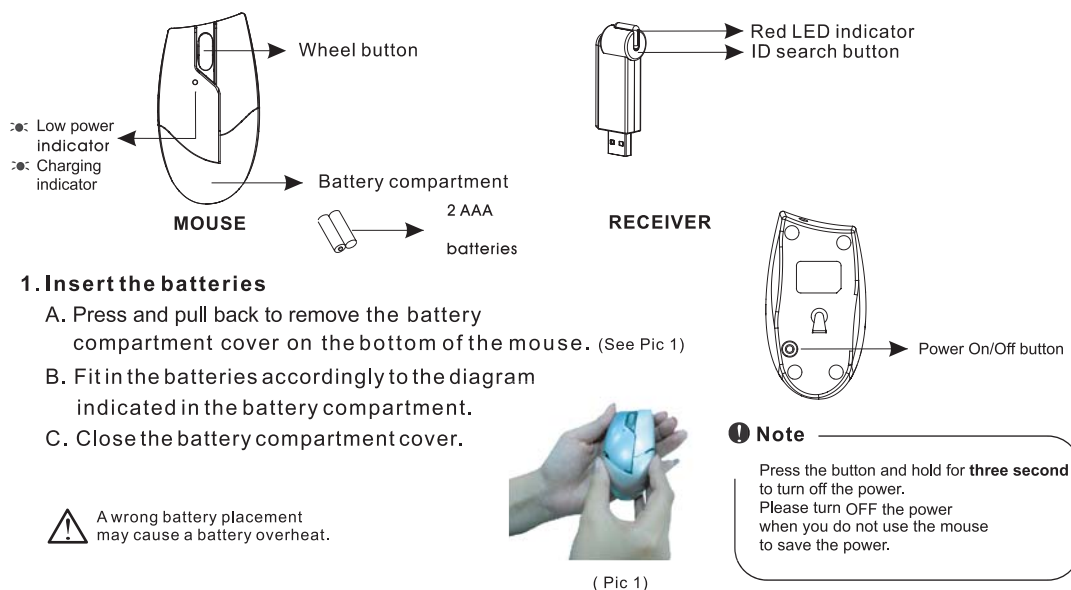


# Cordless Optical Mouse

## User's Guide

All other brands and trademarks are the properties of their respective owners.  
The product specifications are subject to change without notice.

---



### 1. Insert the batteries

- Press and pull back to remove the battery compartment cover on the bottom of the mouse. (See Pic 1)
- Fit in the batteries accordingly to the diagram indicated in the battery compartment.
- Close the battery compartment cover.

**!** A wrong battery placement may cause a battery overheat.

### **Note**

- For a supreme battery performance, it is a **MUST** to fully charge the **batteries contained in this package** at the first-time use.
- The Cordless Optical Mouse unit offers a strong power saving management function. Once the mouse accesses the sleeping mode, "to click any button of the mouse" is compulsory to wake it up.

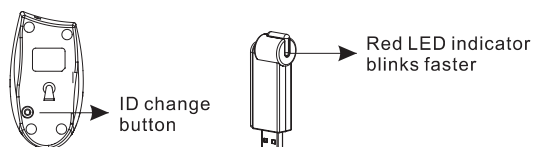
### 2. Connect the receiver

- Turn off your PC.
- Connect the receiver cable to PS2 or USB port on PC
- Turn on your PC.

### 3. Establish communication between the mouse and receiver

- Press the ID search button on the receiver, and note the red LED will blink slowly.

- Press the ID change button on the bottom of the mouse to set a new ID. The red LED indicator will blink at a faster rate until an identical ID is located.



**NOTE**

An appropriate environment setting can ensure the wireless device performance of a minimum **1 m** transmission distance.

- The red LED indicator on the receiver will blink any time the mouse sends it a signal.

**4. Install the software**

- A. Before installing the driver, we suggest you check if any other mouse driver is installed in your system. If yes, in order to avoid any conflicts, please un-install or remove that driver before installing the new driver.
- B. Insert the driver diskette into drive A or B, choose the "Start" menu, and select "Run". Type "  
( drive ) : Setup" in the command line box, and select "OK". Then, follow the instructions on the screen, and RESTART the PC when the installation is completed.

**5. Customizing the mouse functions**

With the software provided, eight commonly-used tasks can be assigned to the programmable wheel button.

- A. Double click the "Wheel Mouse" icon  at the lower right corner of Windows control panel.
- B. Select the "Programmable Button" to assign many frequently-used Windows and the Web functions as below:



**Auto Scroll**  
Move the documents in the direction with just moving the mouse



**Third Button**  
The programmable button can be assigned to perform special functions in certain applications.



**Magic Jump**  
Magic Jump lets you open eight special functions quickly



**Double Click**  
You can assign the "Double Click" function to reduce extra clicks



**Switch AP**  
Quickly switch from one open application to another without moving the mouse



**Back**  
Return to the last page in the Internet



**Data Zoom**  
Magnify or de-magnify the data view



**Forward**  
Go to the next page in the Internet

#### ❖ Troubleshooting

- (1) Make sure you have connected the receiver correctly to the computer's USB or PS2 port.
- (2) For the supreme performance, we suggest you locate the receiver with a distance from other electrical devices, such as the computer, the computer monitor or external storage drives.
- (3) Make sure you have set the communication between the receiver and the mouse. Refer to the channel setting instruction in this manual.
- (4) Some system devices might conflict with the mouse. Confirm the IRQ/address settings of these devices for conflicts, and change the settings as required.
- (5) Make sure that you are not working the mouse on glossy or reflective surfaces.
- (6) Try unplugging then reconnecting the receiver cable to your computer.

#### ❖ Battery use reminders

- (1) Please make sure when you charging the mouse, please turn the power switch to OFF.
- (2) Please make sure the batteries used for recharging are "Rechargeable batteries".
- (3) Avoid reverse charging. Check battery polarity before charging.
- (4) Keep all batteries (used or new) out of the reach of children.
- (5) To have the batteries with a regular check and replace new batteries if not used for a long time.
- (6) Remove batteries from the electrical device if the device is not going to be used for a long time.
- (7) If the performance of the batteries decrease substantially, it is time to replace the batteries.
- (8) Do not mix different types of batteries (e.g. NiMH, NiCd, alkaline, etc) in the mouse.

## Information to User

### Notice 1

You are cautioned that changes or modifications not expressly approved by the part responsible for compliance could void the user's authority to operate the equipment.

### Notice 2

This equipment has been tested and found to comply with the limits for a Class B digital device, pursuant to part 15 of the FCC rules. These limits are designed to provide reasonable protection against harmful interference in a residential installation. This equipment generates, uses and can radiate radio frequency energy and, if not installed and used in accordance with the instructions, may cause harmful interference to radio communications.

### Notice 3

FCC ID: P5A001

This device complies with Part 15 FCC Rules. Operation is subject to the following two conditions:

- (1) This device may not cause harmful interference.
- (2) This device must accept any interference received including interference that may cause undesired operation."

## CE Declaration of Conformity

For the following equipment: WIRELESS MOUSE & RECEIVER

**CE 0678**

Is herewith confirmed to comply with the requirements set out in the Council Directive on the Approximation of the Laws of the Member States relating to Electromagnetic Compatibility (89/336/EEC), Low-voltage Directive (73/23/EEC) and the Amendment Directive (93/68/EEC), the procedures given in European Council Directive 99/5/EC and 89/3360EEC.

The equipment was passed. The test was performed according to the following European standards:

- EN 300 220
- EN 301 489-3
- EN 60950: 2000