

Smart LED Curtain Light

User Manual



01.Introduction

The Smart Curtain Screen is an innovative and intelligent home automation device designed to bring convenience, comfort, and style to your living space.

Key Features

Remote Control

Operate your curtains from anywhere, whether you're in another room or even away from home, through a dedicated mobile app or voice commands via popular smart assistants like Amazon Alexa or Google Assistant. (Voice assistant is only supported by wifi version)

Scheduling Function

Set custom schedules to automatically open or close your curtains at specific times, such as letting in natural light in the morning or closing them for privacy at night, helping you maintain a consistent routine and save energy.

Multiple Control Modes

In addition to remote control and scheduling, you can also manually control the curtains using the physical buttons on the device itself, providing flexibility and convenience in different situations.

Design and Aesthetics

The design of the smart curtain and screen is fashionable and modern, complementing a variety of interior styles. The connected app provides a wide range of patterns for you to choose from based on your preferred style, and it also supports DIY Function.

Installation and Setup

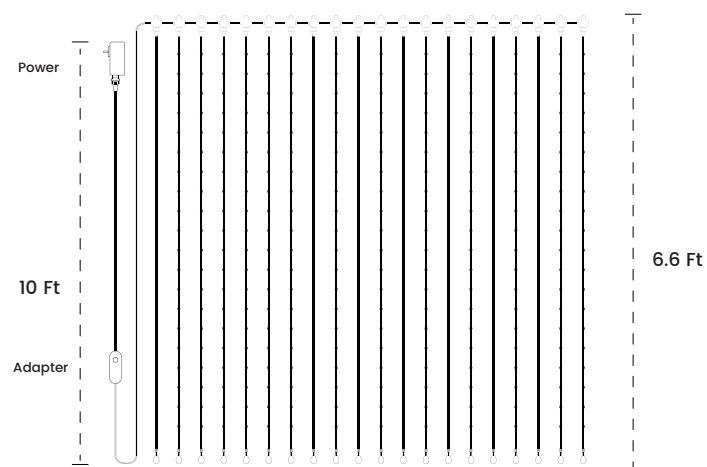
Installation is quick and easy, with clear instructions provided. Simply attach the device to your curtain rail, connect it to your home Wi-Fi network(WiFi Model Only) or bluetooth. Within minutes, you'll be able to start enjoying the benefits of your new Smart Curtain Screen.

Upgrade your home with the Smart Curtain Screen and experience the perfect blend of technology and comfort. It's not just a curtain control device; it's a smart solution that enhances your daily life and adds a touch of sophistication to your home.

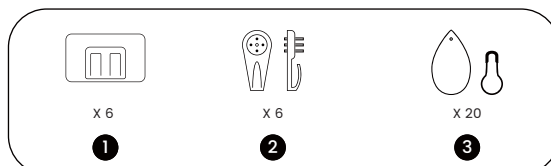
02. What you get

Item	Quantity
1.Curtain String lights	1
2.Power Adapter	1
3.User Manual	1
4.Remote	1
5.Concrete Wall Hooks	6
6.Sticky Hooks	6
7.ornament Hooks	20
8.ornament	20

03. At a Glance



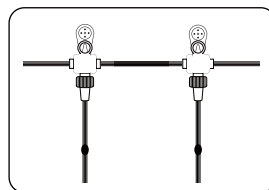
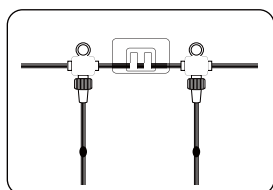
04. Installation Method



This package will provide two kinds of hanging tools, you can choose different tools according to the location of the product placement.

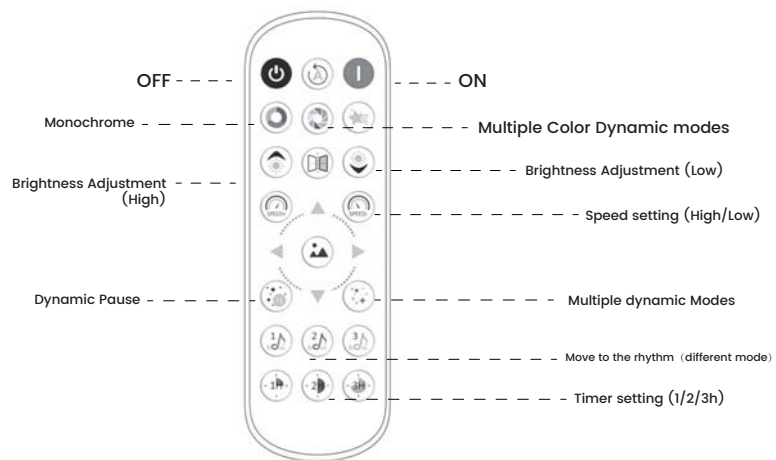
- ❶ Distribute the sticky hooks evenly and attach them to where they need to be hung; it is recommended to use one sticky hook in the middle of every two curtain lights to ensure a better balance of the curtain screen;
- ❷ This product also includes 6 concrete wall hooks, which provide a more secure and sturdy function but may cause some damage to the wall. When using Option 2, please carefully calculate the spacing of the concrete wall hooks to ensure the curtain screen is displayed optimally.

③ Please use ornamnet hooks to string the orament and hang it on the end of the window screen. The weight of the ornaments on the curtain screen allows the string light to fall naturally and is more aesthetically pleasing;

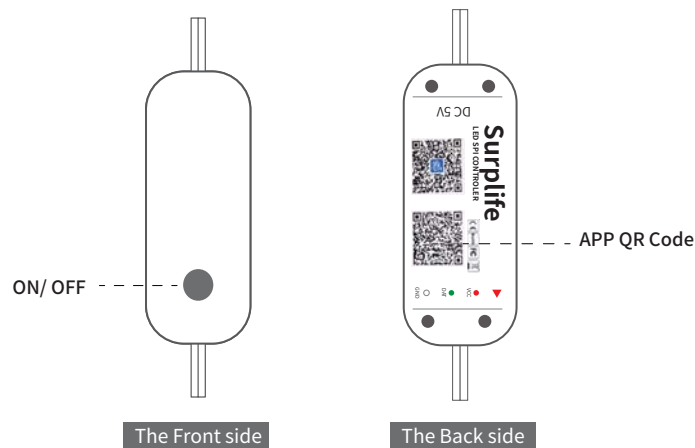


Installation Diagram*

05.Remote Description



06 . Controller instructions



This instruction manual is designed to guide users in understanding and operating the product controller. The controller plays a crucial role in ensuring the proper functioning of the product by receiving signals and facilitating signal transmission.

1.Front Panel Features

Power Switch Button with Memory Function : On the front of the controller, there is a button that serves as the power switch. This button allows users to turn the controller on and off. What makes it special is the product's memory function. Even after the controller is turned off and then turned on again, it will remember the previous settings.

2.Rear Panel Features

App QR Code : On the rear panel of the controller, there is a QR code for the app. Users can easily scan this QR code to download the app. The app offers a wealth of additional content and features.

3.Operation Instructions

Powering On/Off : Locate the power switch button on the front of the controller. Press it to turn the controller on or off. Thanks to the memory function, the product will recall the previous settings when powered on again.

Using the App: Turn on the controller, take out your mobile device, open a QR code scanning app or use the built-in camera app's QR code scanning feature. Scan the QR code on the rear panel of the controller to download and install the app. Once installed, open the app to explore the various content and features it offers.

07 . Safety Instruction

Read and follow the safety instructions below:

1.General Safety Guidelines

Inspect Before Use Before installation, check the product for any visible damage (e.g., broken wires, cracked components). Do not use if damaged.

Power Supply: Use only the provided power adapter or a compatible one with the correct voltage and current rating (as specified in the product manual).

Avoid Overloading: Do not connect multiple devices to the same power outlet to prevent overheating or fire hazards.

2. Installation Safety

Mounting Surface: Ensure the mounting surface (e.g., wall, ceiling) is clean, dry, and sturdy enough to support the weight of the curtain light.

Secure Installation: Use the included hooks or clips to securely hang the curtain light. Avoid placing it near flammable materials (e.g., curtains, paper).

Height Consideration: Install the curtain light at a safe height to prevent tripping hazards or accidental contact.

Ventilation: Ensure proper ventilation around the power adapter and control unit to prevent overheating.

3. Operation Safety

Temperature Control: Do not touch the LEDs or power adapter during or immediately after operation, as they may become hot.

Modify: Do not disassemble, modify, or attempt to repair the product yourself. Contact customer support for assistance.

4. Warranty and Support

The Smart LED Curtain Light comes with a 1 year limited warranty. Misuse or failure to follow safety instructions may void the warranty.

For technical support or warranty claims, contact [\[baizexservice@gmail.com\]](mailto:baizexservice@gmail.com).



The curtain Light has a waterproof function, but the controller and power supply are not waterproof. Please avoid product damage caused by water ingress .

08 . Product Parameters

The number of LEDS	400
Light Source	RGBIC
Light Spacing	0.33FT
Waterproof	IP67
Power Input(Adapter)	100-240V 50/60Hz
Power Input(Curtain Light)	5V DC, 3A
Curtain Light Dimensions	6.6FT x 6.6FT

09 . How to Deal with Situations

1. Fails to connect to Wi-Fi (WiFi Model Only)

- Ensure the distance between the device and the router is less than 100 ft.
- Keep obstructions (e.g., walls, windows) to a minimum between the device and the router.
- Check the Wi-Fi name and password.
- Ensure the Wi-Fi you connect to is 2.4GHz; Please note that 5GHz is not supported

2. App Fails to connect to your device.

- Check the power supply of the equipment.
- Exit the app and reopen it.
- Disconnect and reconnect the power supply to the device.
- Move the phone closer to the device and rescan.

FCC and IC Radiation Exposure Statement

This device complies with Part 15 of the FCC Rules and Industry Canada's licence-exempt RSS standards. Operation is subject to the following two conditions:

- 1) This device may not cause harmful interference.
- 2) This device must accept any interference received, including interference that may cause undesired operation.

Warning: Changes or modifications not expressly approved by the party responsible for compliance could void the user's authority to operate the equipment.

NOTE: This equipment has been tested and found to comply with the limits for a Class B digital device, pursuant to Part 15 of the FCC Rules.

These limits are designed to provide reasonable protection against harmful interference in a residential installation. This equipment generates, uses, and can radiate radio frequency energy and, if not installed and used in accordance with the instructions, may cause harmful interference to radio communications.

However, there is no guarantee that interference will not occur in a particular installation.

If this equipment does cause harmful interference to radio or television reception, which can be determined by turning the equipment off and on, the user is encouraged to try to correct the interference by one or more of the following measures:

- 1) Reorient or relocate the receiving antenna.
- 2) Increase the separation between the equipment and receiver.
- 3) Connect the equipment into an outlet on a circuit different from that to which the receiver is connected.
- 4) Consult the dealer or an experienced radio/TV technician for help.

Pairing Your Light with Surp life App

Pairing Your Light with Surp life App

What You Need


- A Wi-Fi router supporting the 2.4GHz and 802.11 b/g/n bands. 5GHz is not supported.
- A smartphone or tablet running iOS or Android.(WiFi Model Only)

1. Download Surplife app from the App Store (IOS devices) or Google Play (Android devices).
2. Turn on the Bluetooth on your smart phone.
3. Open the app, tap the "+" icon in the top right corner and search for "curtain light icon".
4. Tap the device icon and follow the on-screen instructions to complete pairing.
5. A successful pairing will display a "white" color icon, while an unsuccessful one will be gray.

Website: <https://surplife.cc>



Customer service

 E-mail: baizexservice@qmail.com