



## Conducted Emission Method

## Test Result

TestMode	Antenna	Frequency[MHz]	FreqRange [MHz]	RefLevel [dBm]	Result [dBm]	Limit [dBm]	Verdict
DH5	Ant1	2402	0~Reference	1.91	1.91	---	PASS
DH5	Ant1	2402	30~1000	1.91	-57.54	≤-18.09	PASS
DH5	Ant1	2402	1000~26500	1.91	-42.56	≤-18.09	PASS
DH5	Ant1	2441	0~Reference	2.14	2.14	---	PASS
DH5	Ant1	2441	30~1000	2.14	-57.26	≤-17.86	PASS
DH5	Ant1	2441	1000~26500	2.14	-42.16	≤-17.86	PASS
DH5	Ant1	2480	0~Reference	3.21	3.21	---	PASS
DH5	Ant1	2480	30~1000	3.21	-57.8	≤-16.79	PASS
DH5	Ant1	2480	1000~26500	3.21	-42.1	≤-16.79	PASS
2DH5	Ant1	2402	0~Reference	-4.69	-4.69	---	PASS
2DH5	Ant1	2402	30~1000	-4.69	-57.48	≤-24.69	PASS
2DH5	Ant1	2402	1000~26500	-4.69	-41.3	≤-24.69	PASS
2DH5	Ant1	2441	0~Reference	-3.68	-3.68	---	PASS
2DH5	Ant1	2441	30~1000	-3.68	-57.96	≤-23.68	PASS
2DH5	Ant1	2441	1000~26500	-3.68	-42.12	≤-23.68	PASS
2DH5	Ant1	2480	0~Reference	-2.33	-2.33	---	PASS
2DH5	Ant1	2480	30~1000	-2.33	-57.24	≤-22.33	PASS
2DH5	Ant1	2480	1000~26500	-2.33	-42.53	≤-22.33	PASS
3DH5	Ant1	2402	0~Reference	-3.74	-3.74	---	PASS
3DH5	Ant1	2402	30~1000	-3.74	-57.15	≤-23.74	PASS
3DH5	Ant1	2402	1000~26500	-3.74	-42.53	≤-23.74	PASS
3DH5	Ant1	2441	0~Reference	-3.90	-3.90	---	PASS
3DH5	Ant1	2441	30~1000	-3.90	-57.72	≤-23.9	PASS
3DH5	Ant1	2441	1000~26500	-3.90	-41.41	≤-23.9	PASS
3DH5	Ant1	2480	0~Reference	-0.74	-0.74	---	PASS
3DH5	Ant1	2480	30~1000	-0.74	-57.89	≤-20.74	PASS
3DH5	Ant1	2480	1000~26500	-0.74	-42.25	≤-20.74	PASS



## Test Graphs:

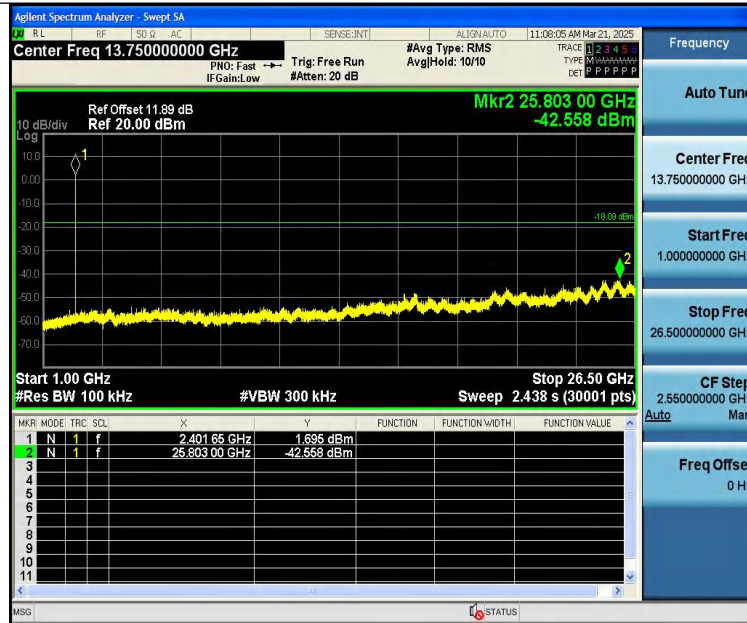
DH5-Ant1-2402-0~Reference-PASS



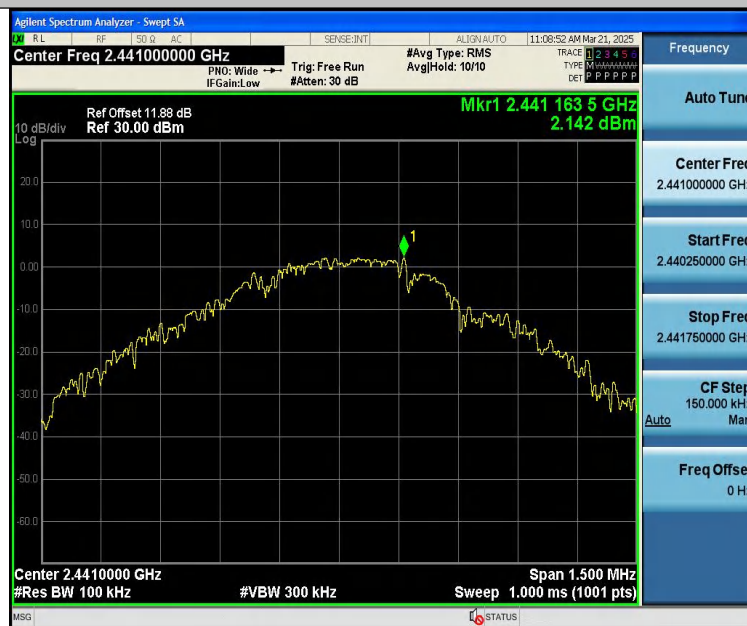
DH5-Ant1-2402-30~1000-PASS



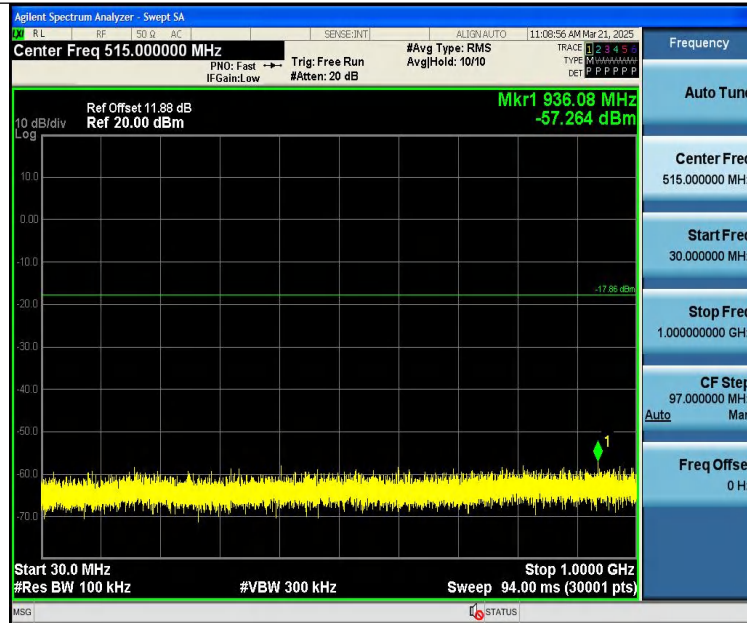
DH5-Ant1-2402-1000~26500-PASS



DH5-Ant1-2441-0~Reference-PASS



DH5-Ant1-2441-30~1000-PASS



## DH5-Ant1-2441-1000~26500-PASS



## DH5-Ant1-2480-0~Reference-PASS



DH5-Ant1-2480-30~1000-PASS



DH5-Ant1-2480-1000~26500-PASS

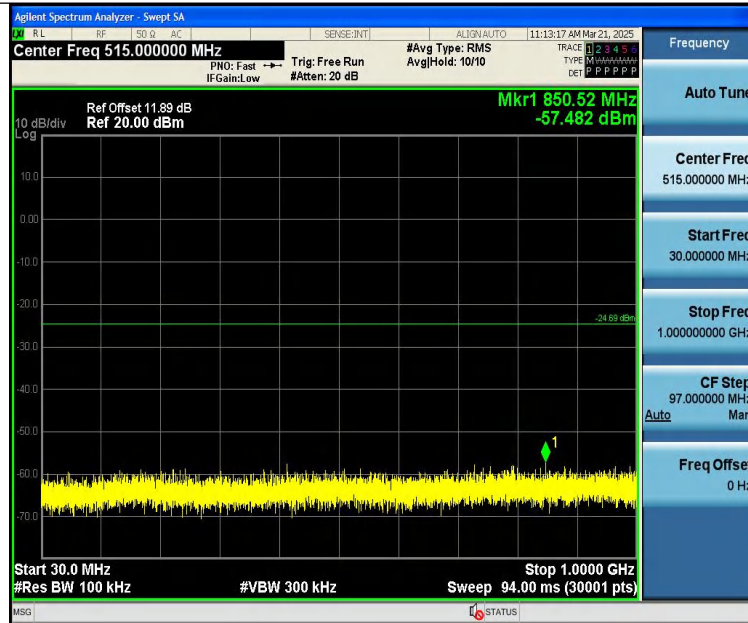


2DH5-Ant1-2402-0~Reference-PASS



2DH5-Ant1-2402-30~1000-PASS





2DH5-Ant1-2402-1000~26500-PASS



2DH5-Ant1-2441-0~Reference-PASS

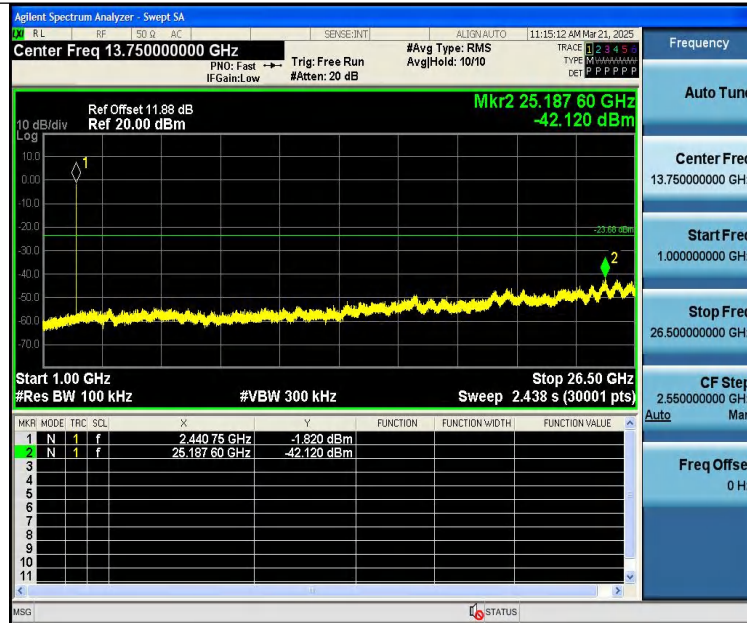


2DH5-Ant1-2441-30~1000-PASS



2DH5-Ant1-2441-1000~26500-PASS

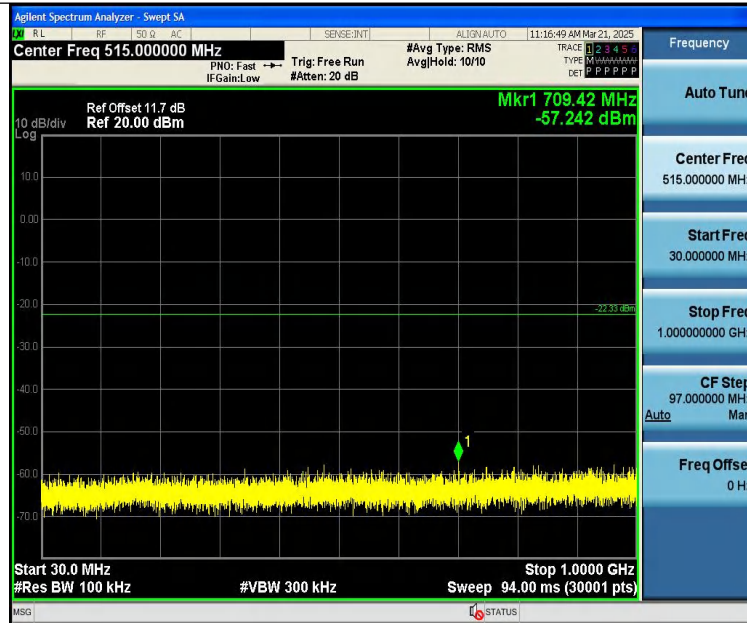




2DH5-Ant1-2480-0~Reference-PASS



2DH5-Ant1-2480-30~1000-PASS



2DH5-Ant1-2480-1000~26500-PASS



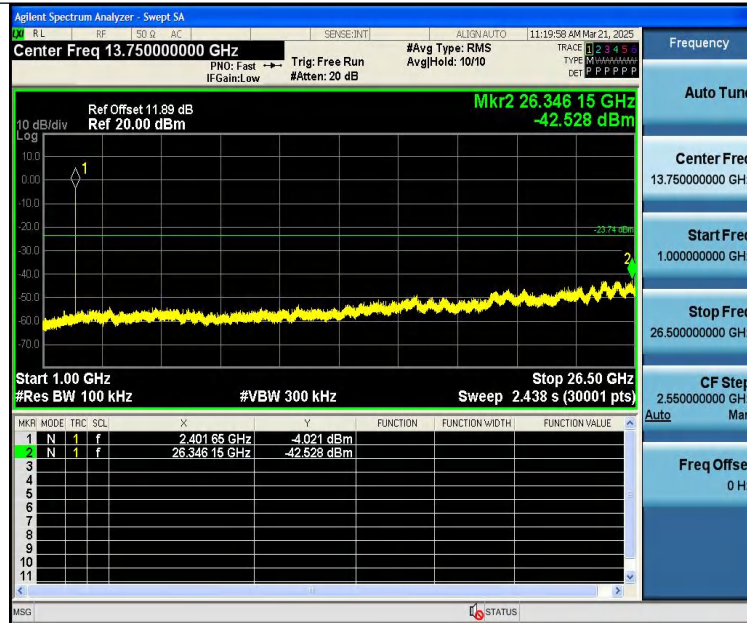
3DH5-Ant1-2402-0~Reference-PASS



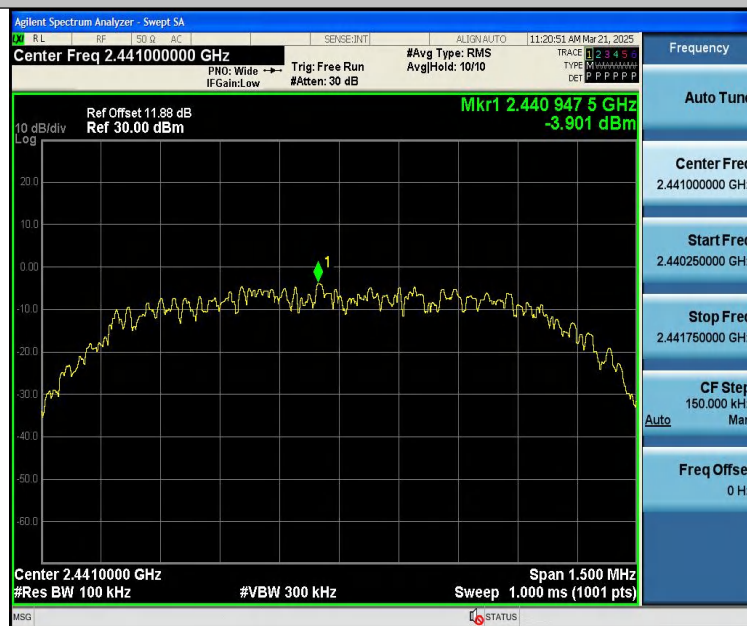
3DH5-Ant1-2402-30~1000-PASS



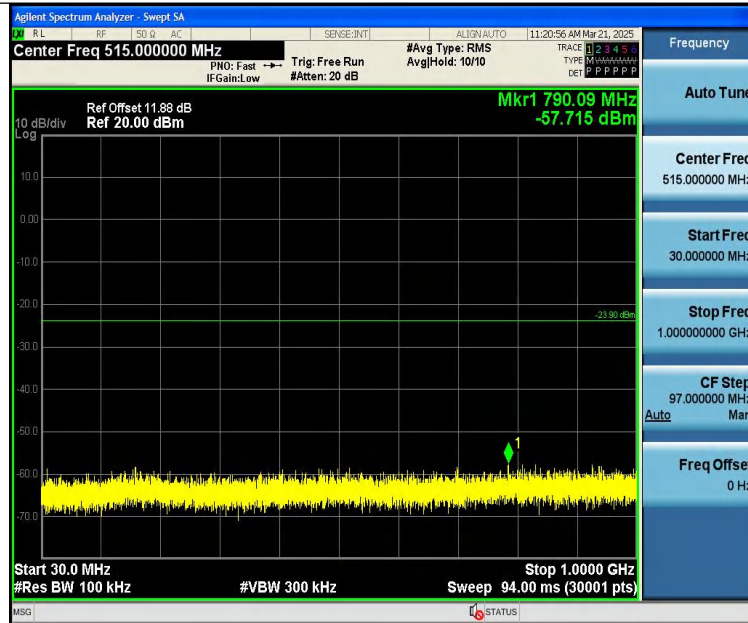
3DH5-Ant1-2402-1000~26500-PASS



3DH5-Ant1-2441-0~Reference-PASS



3DH5-Ant1-2441-30~1000-PASS



3DH5-Ant1-2441-1000~26500-PASS

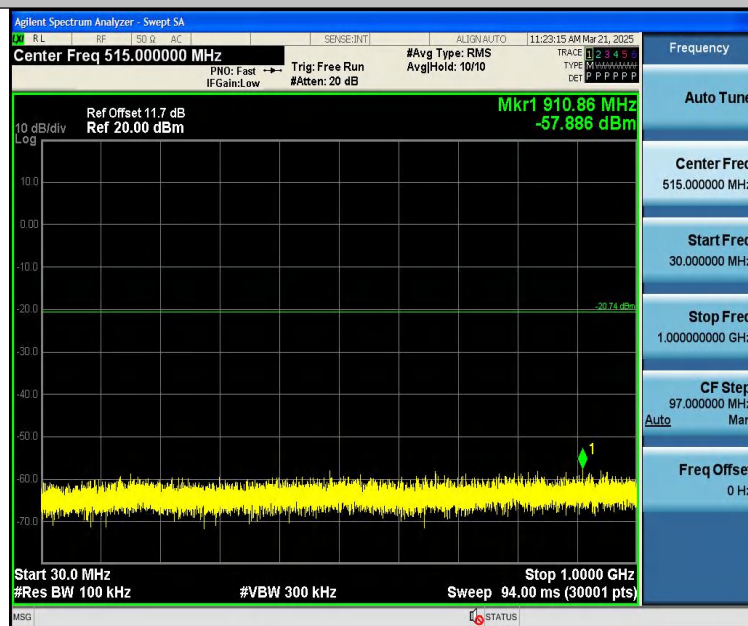


3DH5-Ant1-2480-0~Reference-PASS



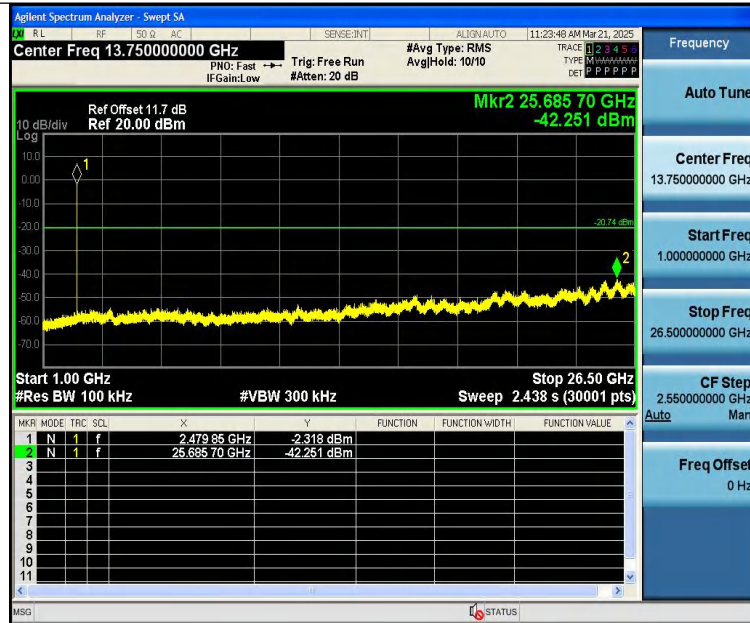


3DH5-Ant1-2480-30~1000-PASS



3DH5-Ant1-2480-1000~26500-PASS







## 14 Antenna Requirement

### 14.1 Test Standard and Requirement

Test Standard	FCC Part15 Section 15.203 /247(c)
Requirement	<p>1) 15.203 requirement:</p> <p>An intentional radiator shall be designed to ensure that no antenna other than that furnished by the responsible party shall be used with the device. The use of a permanently attached antenna or of an antenna that uses a unique coupling to the intentional radiator, the manufacturer may design the unit so that a broken antenna can be replaced by the user, but the use of a standard antenna jack or electrical connector is prohibited.</p> <p>2) 15.247(c) (1)(i) requirement:</p> <p>Systems operating in the 2400-2483.5 MHz band that is used exclusively for fixed. Point-to-point operations may employ transmitting antennas with directional gain greater than 6dBi provided the maximum conducted output power of the intentional radiator is reduced by 1 dB for every 3 dB that the directional gain of the antenna exceeds 6 dBi.</p>

### 14.2 Antenna Connected Construction

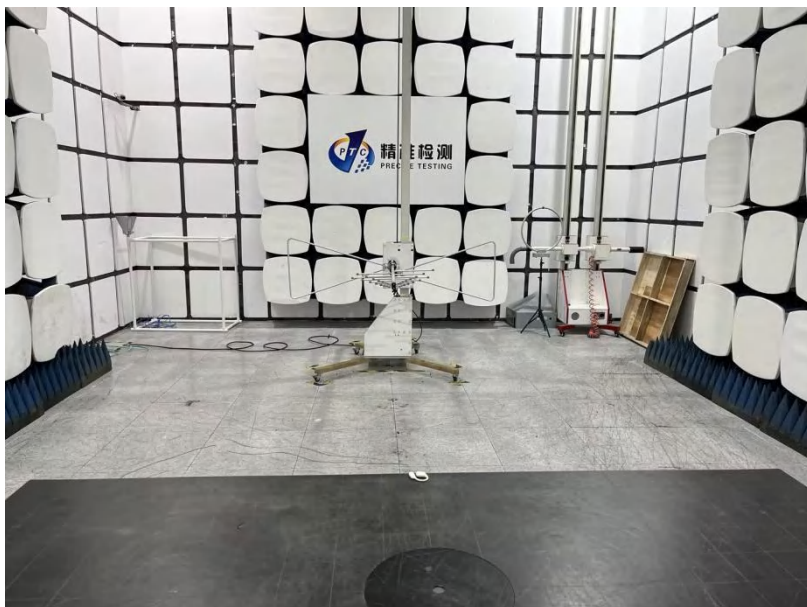
The antenna is Ceramic Antenna which permanently attached, and the best case gain of the antenna is 2.7 dBi. It complies with the standard requirement.

## 15 APPENDIX I -- TEST SETUP PHOTOGRAPH

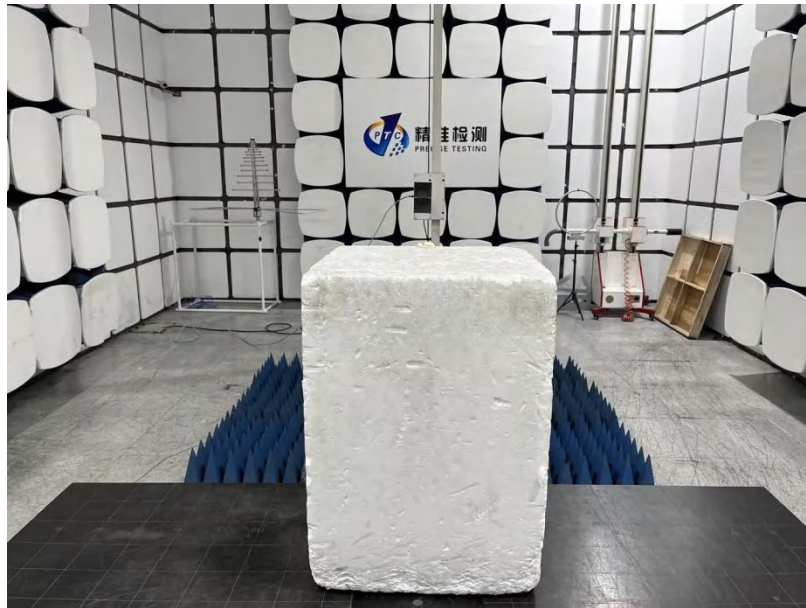
### Conducted Emissions



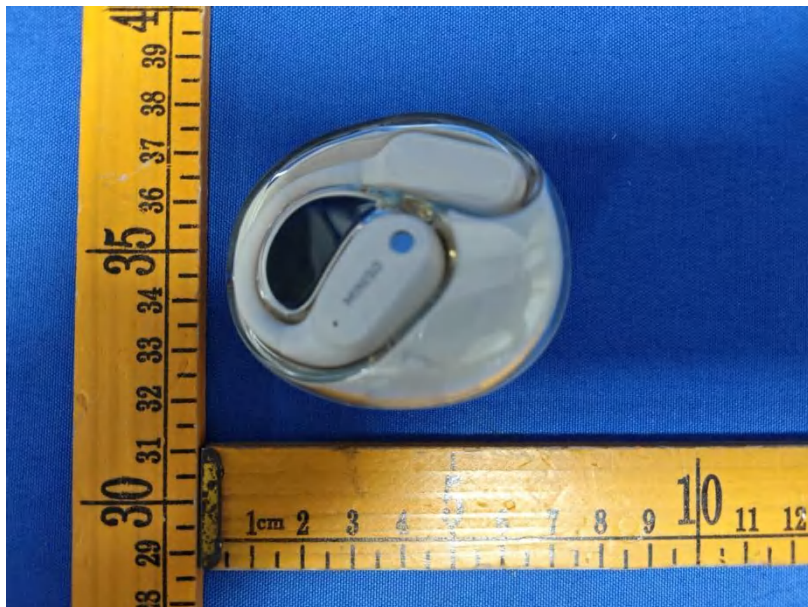
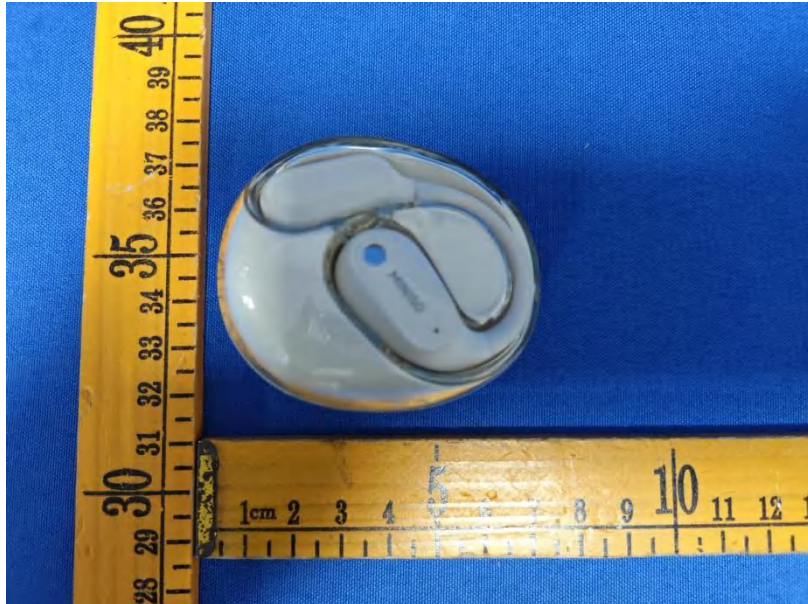
### Radiated Emissions From 30M-1GHz



Above 1GHz



## 16 APPENDIX II -- EUT PHOTOGRAPH









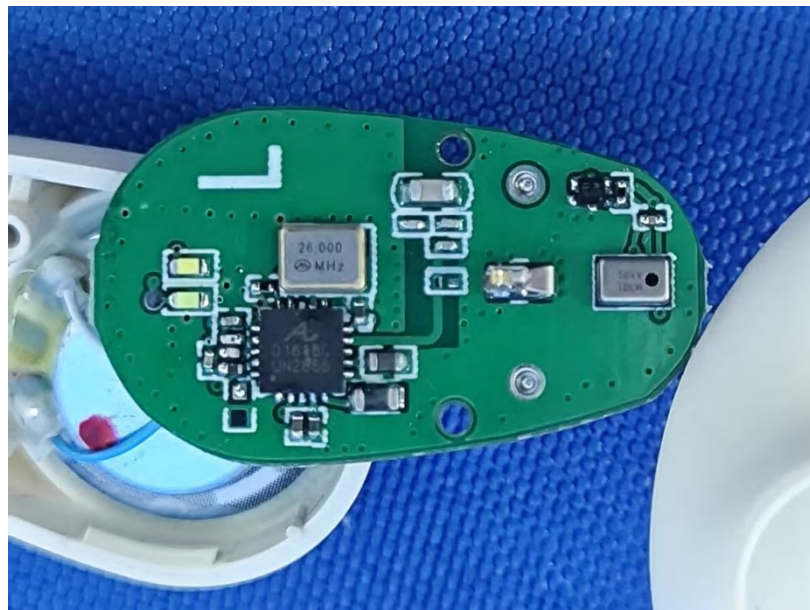
L:

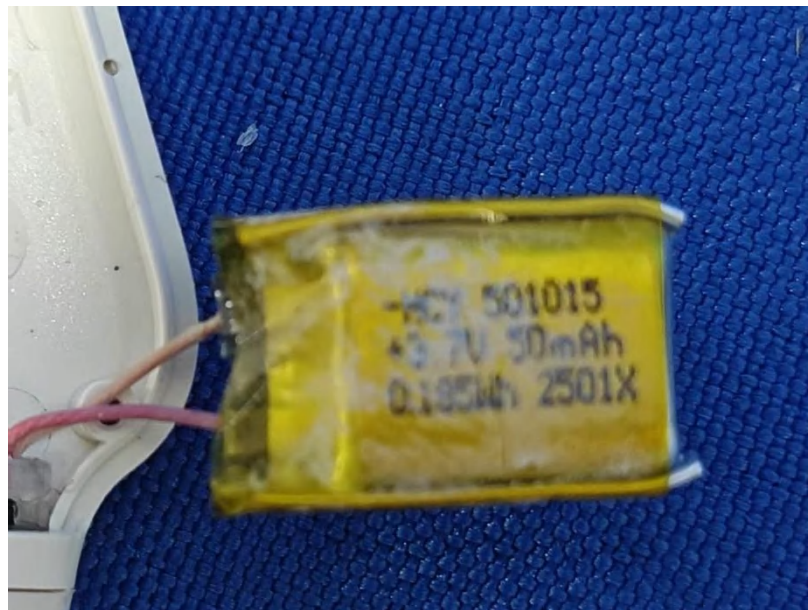
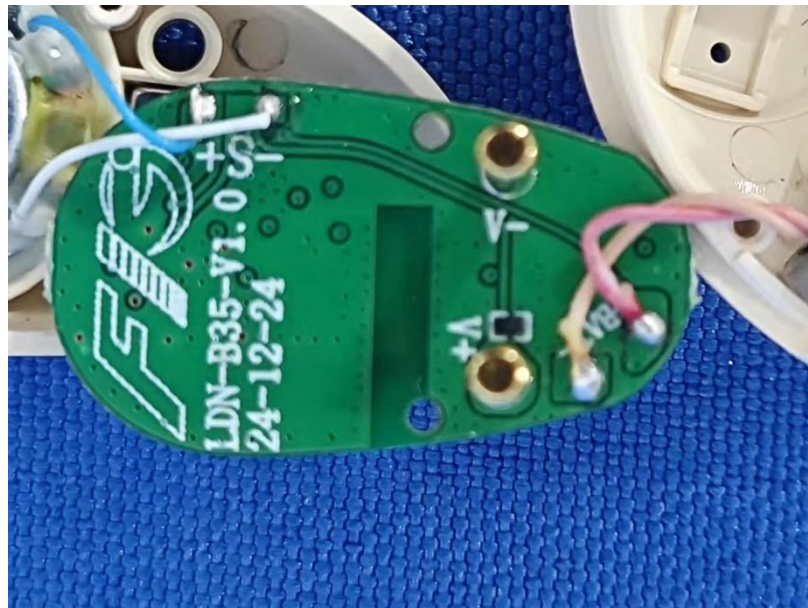








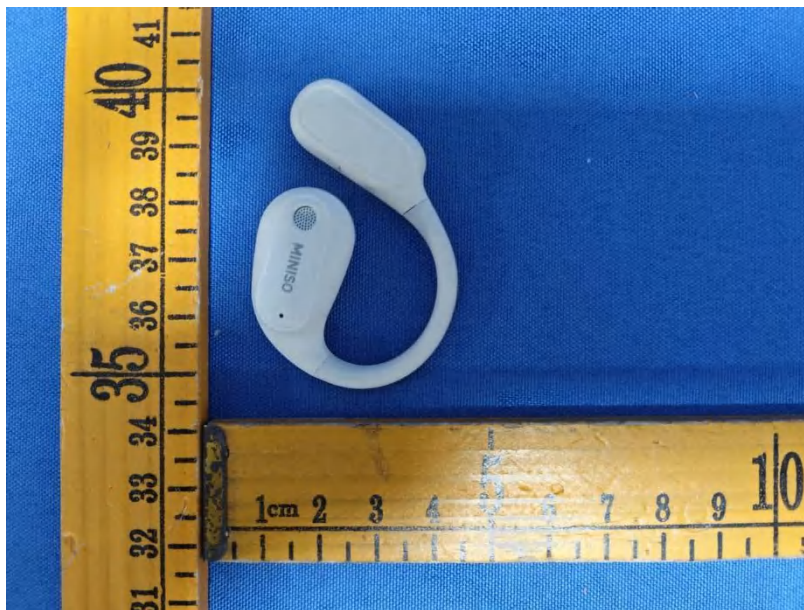




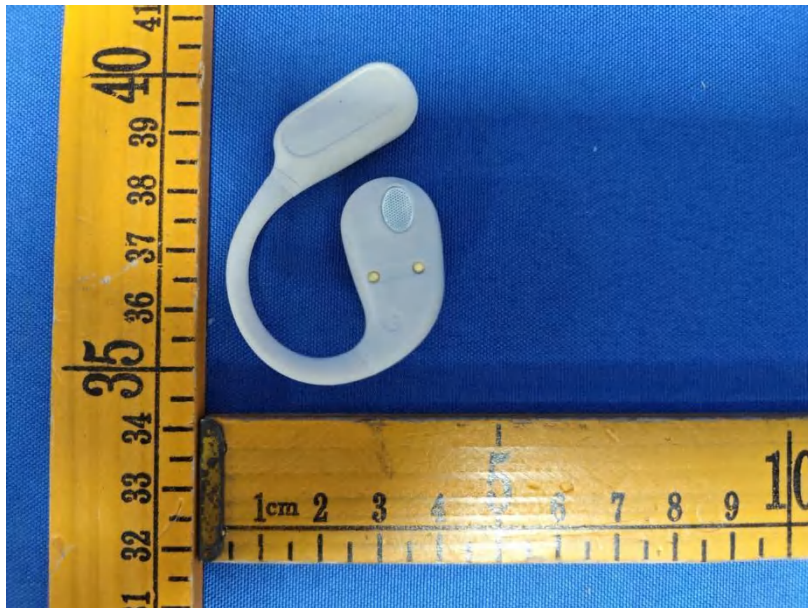




R:





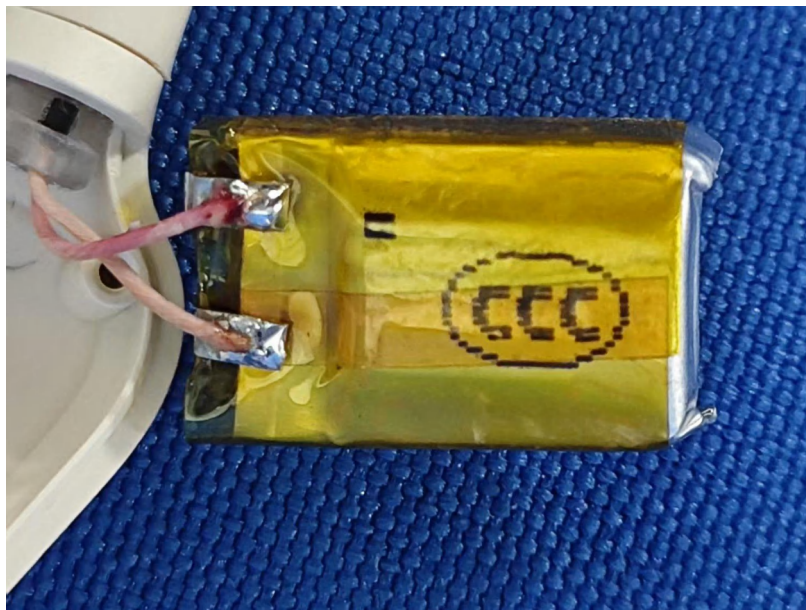












\*\*\*\*\*THE END REPORT\*\*\*\*\*