



ThinkPad X1 Wireless Touch Mouse User Guide

 <http://www.lenovo.com/safety>

Note: Before installing the product, be sure to read the warranty information in Appendix B “Lenovo Limited Warranty” on page 11.

First Edition (December 2015)

© Copyright Lenovo 2015.

LIMITED AND RESTRICTED RIGHTS NOTICE: If data or software is delivered pursuant a General Services Administration “GSA” contract, use, reproduction, or disclosure is subject to restrictions set forth in Contract No. GS-35F-05925.

Contents

Safety information	iii	Appendix C. Electronic emission notices	19
About this user guide	1	Federal Communications Commission Declaration of Conformity	19
Product description	1	Appendix D. Notices	23
Installing the mouse	2	Recycling and environmental information	23
Using the mouse and the software	3	Recycling information for China	23
Using the mouse	3	Recycling information for Brazil	24
Installing the software and advanced functions	4	Important WEEE information	24
Charging the mouse	4	Export Classification Notice	24
Troubleshooting	5	Trademarks	24
Appendix A. Service and Support	9	Appendix E. Restriction of Hazardous Substances Directive (RoHS)	27
Online technical support	9	European Union RoHS	27
Telephone technical support	9	China RoHS	27
Accessibility information	9	Turkish RoHS	27
Appendix B. Lenovo Limited Warranty.	11	Ukraine RoHS	27
Part 1 - General Terms	11	India RoHS	28
Part 2 - Country-specific Terms	13		
Part 3 - Warranty Service Information	16		
Suplemento de Garantía para México	17		

Safety information

Before using the product, be sure to read the safety documentation that comes with the product.

Antes de usar o produto, certifique-se de ler a documentação de segurança incluída.

Prije korištenja proizvoda svakako pročitajte priloženu dokumentaciju koja se tiče sigurnosti.

Před použitím produktu je třeba si přečíst bezpečnostní dokumentaci, která je dodávána s produktem.

Før du bruger produktet, skal du sørge for at læse de sikkerhedsforskrifter, der følger med produktet.

Lue tuotteen mukana toimitetut turvaohjeet ennen tämän tuotteen käyttöä.

Avant d'utiliser le produit, veuillez à bien lire la documentation relative à la sécurité fournie avec le produit.

Πριν να χρησιμοποιήσετε το προϊόν, διαβάστε τα έγγραφα για την ασφάλεια που το συνοδεύουν.

Vor Verwendung des Produkts sollten Sie unbedingt die Sicherheitsdokumentation lesen, die im Lieferumfang des Produkts enthalten ist.

A termék használatá elött mindenképpen olvassa el a termékhez kapott biztonsági előírásokat.

Prima di utilizzare il prodotto, accertarsi di leggere la documentazione sulla sicurezza fornita con il prodotto.

Lees, voordat u het product gebruikt, de veiligheidsdocumentatie die met het product is meegeleverd.

Før du bruker produktet, må du lese sikkerhetsdokumentasjonen som følger med produktet.

Przed skorzystaniem z produktu należy zapoznać się z dokumentacją na temat bezpieczeństwa dostarczoną wraz z produktem.

Antes de utilizar o produto, certifique-se de que lê a documentação de segurança fornecida com o produto.

Прежде чем использовать этот продукт, ознакомьтесь с документацией по технике безопасности, входящей в комплект поставки продукта.

Pred používaním produktu si prečítajte bezpečnostnú dokumentáciu dodanú s produktom.

Preden začnete uporabljati izdelek, preberite varnostno dokumentacijo, ki ste jo prejeli skupaj z izdelkom.

Antes de utilizar el producto, asegúrese de leer la documentación de seguridad que se entrega junto con este.

Läs säkerhetsinstruktionerna som följer med produkten innan du börjar använda den.

قبل استخدام المنتج، تأكد من قراءة مستندات السلامة المرفقة مع المنتج.

לפני השימוש במוצר, הקפידו לקרוא את הוראות הבטיחות המצורפות למוצר.

製品をご使用になる前に、製品に付属の安全に関する資料をお読みください。

제품을 사용하기 전에 제품과 함께 제공되는 안전 문서를 반드시 읽어 주십시오.

使用产品前，务必先阅读产品附带的安全文档。

使用本產品之前，請務必閱讀產品隨附的安全文件。

Пред користење на производот, прочитајте ја документацијата за безбедност што се доставува со него.

About this user guide

This user guide provides information about the ThinkPad® X1 Wireless Touch Mouse.

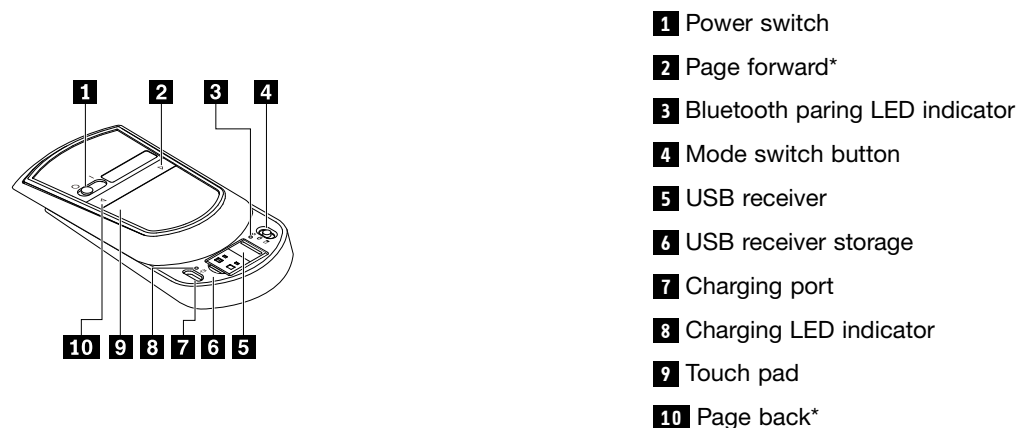
Product description

The ThinkPad X1 Wireless Touch Mouse features in slim design, optimized for travel use. You to use it as a mouse in either 2.4Ghz wireless mode or Bluetooth mode. This mouse can also be used as a touch pad presenter when presenting by Microsoft® PowerPoint®.

The following figures show the front view and the rear view of the mouse.



Figure 1. Mouse front view



Note: * Page forward and page back only work when presenting with the Microsoft Power Point application.

Figure 2. Mouse rear view

The following table describes the ThinkPad X1 Wireless Touch Mouse specifications:

Color	Black
Dimensions (Length x Width x Height)	95 mm x 56.8 mm x 20.4 mm
Weight	58 g (including the dongle)
PC interface	Bluetooth4.0, USB2.0
Operating voltage	3.3 V (Typical)

Battery capability	380 mA (Typical)
Power consumption	40 mA maximum for mouse
Power consumption	100mA for USB receiver
Cable length	1m (3.28 feet)

The mouse is supported on the following operating systems:

- Microsoft® Windows® 7 (for 2.4Ghz wireless mode only)
- Microsoft Windows 8 (for 2.4Ghz wireless mode and Bluetooth mode)
- Microsoft Windows 8.1 (for 2.4Ghz wireless mode and Bluetooth mode)
- Microsoft Windows 10 (for 2.4Ghz wireless mode and Bluetooth mode)

Your option package includes the following:

- ThinkPad X1 Wireless Touch Mouse (including a USB (Universal Serial Bus) receiver)
- USB charging cable
- Setup and warranty poster

Installing the mouse

To use the mouse in 2.4Ghz wireless mode, do the following:

Slide the bottom of the mouse forward to take the receiver out of the mouse. Connect the receiver to an available USB connector on the computer. Move the power switch to the on position. Slide the bottom of the mouse down until it clicks into place. The mouse is ready to use.

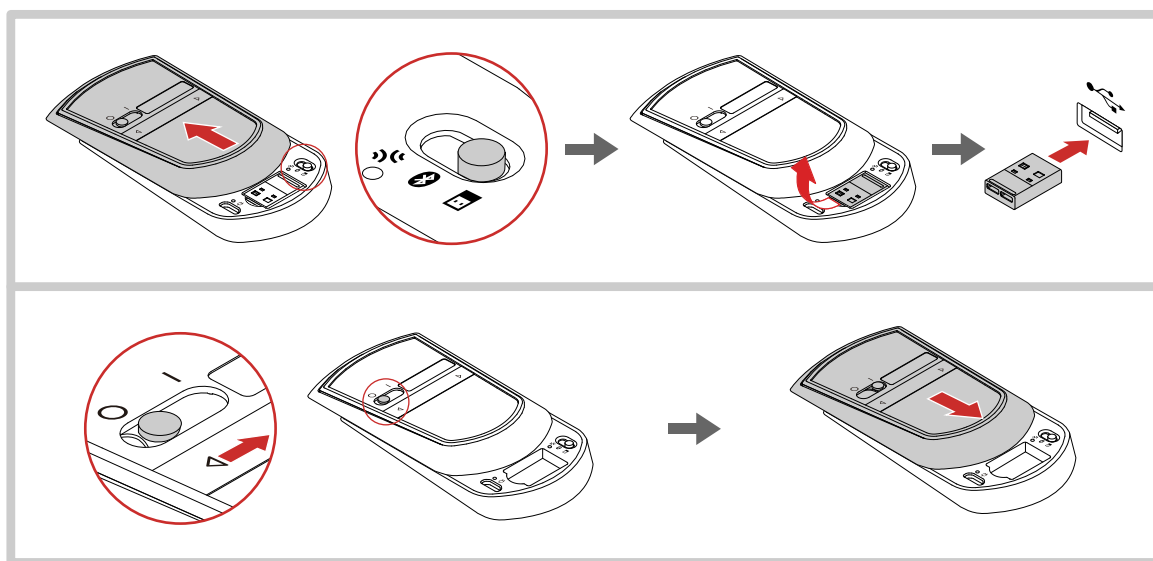


Figure 3. Using the mouse in 2.4Ghz wireless mode

To use the mouse in Bluetooth mode, do the following:

Slide the bottom of the mouse forward, and push the mode switch button to the Bluetooth position. Enable the Bluetooth function of your computer. Move the power switch to the on position. Push and hold the mode switch to the Bluetooth Pairing position until the Bluetooth pairing LED indicator is blinking. Select

ThinkPad X1 mouse in the available device list on your computer. Slide the bottom of the mouse down until it clicks into place. The mouse is ready to use.

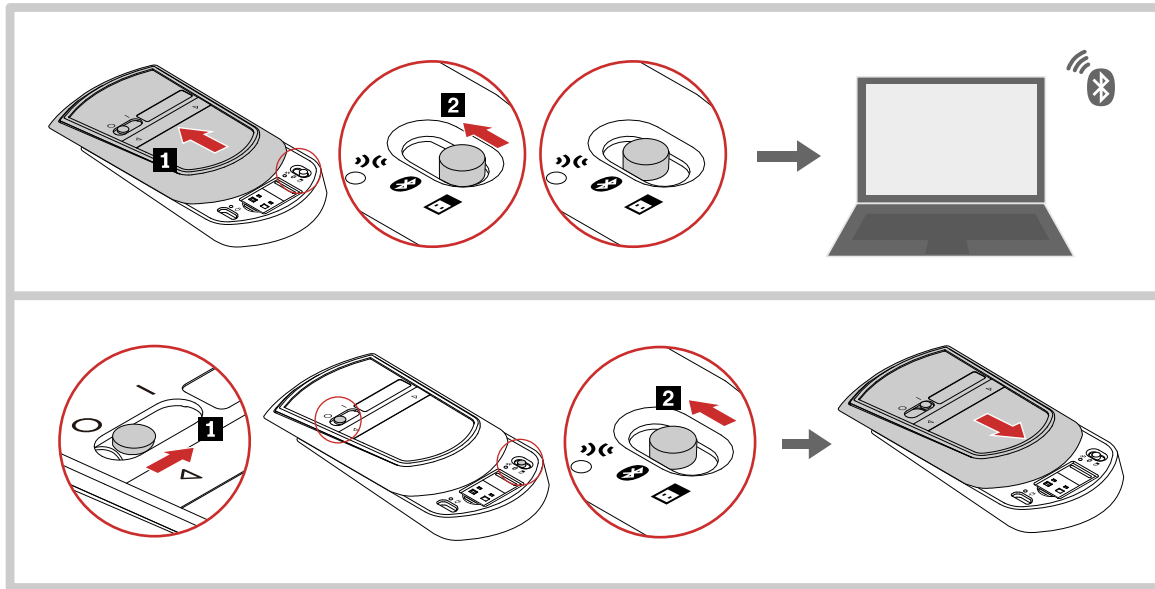


Figure 4. Using the mouse in Bluetooth mode

Note: Both Bluetooth pairing LED indicator at the back of the mouse and LED indicators in the front flashing when searching for Bluetooth connection.

Using the mouse and the software

The ThinkPad X1 Wireless Touch Mouse has multiple functions and features which help you increase your productivity. You also can assign frequently used functions or shortcuts to the mouse buttons using the Lenovo Mouse Suite software.

Using the mouse

Components	Support functions
Capacitive scroll strip	Scroll up and down
Touch buttons	Click the touch buttons to make page forward and back*
Touch pad	Turn the mouse upside down to enable the Touch pad function*. Single finger tap to click; two fingers-tap to right click; no gestures and zooming.

Notes:

- To maximize battery life, move the power switch on the mouse to the off position when you are not using the mouse.
- The touch buttons and touch pad support Microsoft PowerPoint only.

Installing the software and advanced functions

It is recommended that you install the Lenovo Mouse Suite software to customize advanced settings before you use the ThinkPad X1 Wireless Touch Mouse .

Note: It is recommended that you uninstall any previously installed mouse software before installing the Lenovo Mouse Suite software.

To install the Lenovo Mouse Suite software, do the following:

1. Go to <http://www.lenovo.com/support/mice>.
2. Locate ThinkPad X1 Wireless Touch mouse in the product list and click and download the installation file of the Lenovo Mouse Suite software.
3. Double-click the installation file. Select **Dual Mode (USB + Bluetooth) Interface** in the **Hardware Interface Selection** window, and then follow the instructions on the screen to complete the installation.
4. The software provides option to enable the virtual laser pointer for touchpad when presenting through Microsoft Power Point.

Note: Ensure you have selected **Enable Virtual Laser Pointer for Touchpad (supported in Powerpoint)** before using the function.

Note: The Virtual Laser Pointer only works when using the Microsoft PowerPoint application.

Charging the mouse

Connect one end of the USB charging cable to the charging port on the mouse and the other end to an available USB connector on the computer to charge the mouse.

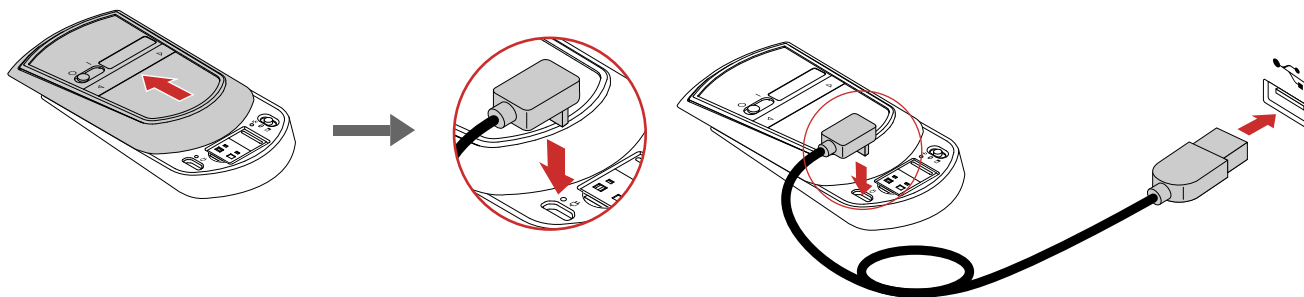


Figure 5. Charging the mouse

Note: The power cable is only for charging the mouse. Do not use it to transmit data.

Turn on the mouse and then check battery power remaining.

LED indicators	Battery power remaining
Four indicators are lit.	75%–100%
Three indicators are lit.	50%–75%
Two indicators are lit.	25%–50%

LED indicators	Battery power remaining
Only one indicator is lit.	≤ 25%
No indicator is lit or only one is blinking.	Depleted. Charge the mouse.

Turn on the mouse and then check the LED indicators.

LED indicators	Mouse status
Each LED indicator blinking one by one	The mouse is in Bluetooth pairing mode
Bluetooth pairing LED indicator is blinking	The mouse is in Bluetooth pairing mode
Charging LED indicator is blinking	The mouse is under charging
Charging LED indicator is lit	The mouse is fully charged

Troubleshooting

This topic provides basic troubleshooting information when you encounter problems with your mouse.

Problem: The mouse is not recognized by the operating system.

Solution: To solve the problem, perform one of the following procedures:

Procedure A:

For the Windows 7 operating system:

1. Click **Start** → **Control Panel**.
2. Depending on your Control Panel mode, double-click **System** or click **Performance and Maintenance** → **System**.
3. Click the **Hardware** tab.
4. Click **Device Manager**.
5. Scroll down until you find **Mice and other pointing devices**. Then, expand the **Mice and other pointing devices** category.
6. Right-click **HID-compliant mouse**, and then select **Uninstall**. A warning will be displayed, prompting you that you are going to remove a device from the operating system.
7. Click **OK**.
8. Right-click **Mice and other pointing devices**, and then select **Scan for hardware changes** to re-detect the hardware.

Note: If a yellow exclamation mark is displayed in front of the mouse or receiver name after re-detection, it indicates that the mouse or receiver driver is not successfully installed. Right-click the mouse or receiver name, and then select **Update Driver** or **Update Driver Software** to install the mouse or receiver driver again.

For the Windows 8 or Windows 8.1 operating system:

1. From the desktop, move the pointer to the top-right or bottom-right corner of the screen to display the charms, and then click **Settings** → **Control Panel**.
2. Depending on your Control Panel mode, click **Device Manager** or click **Hardware and Sound** → **Device Manager**.

3. Scroll down until you find **Mice and other pointing devices**. Then, expand the **Mice and other pointing devices** category.
4. Right-click **HID-compliant mouse**, and then select **Uninstall**. A warning will be displayed, prompting you that you are going to remove a device from the operating system.
5. Click **OK**.
6. Right-click **Mice and other pointing devices**, and then select **Scan for hardware changes** to re-detect the hardware.

Note: If a yellow exclamation mark is displayed in front of the mouse name after re-detection, it indicates that the mouse driver is not successfully installed. Right-click the mouse name, and then select **Update Driver** or **Update Driver Software** to install the mouse driver again.

For the Windows 10 operating system:

1. From the desktop, move the pointer to bottom-left corner of the screen, and then search **Device Manager** in the search box.
2. Open **Device Manager**, scroll down until you find **Mice and other pointing devices**, and then expand the **Mice and other pointing devices** category.
3. Right-click **HID-compliant mouse**, and then select **Uninstall**. A warning message will be displayed, prompting you that you are going to remove a device from the operating system.
4. Click **OK** to remove the device.
5. After you remove the device, right-click **Mice and other pointing devices**, and then select **Scan for hardware changes** to re-detect the hardware.

Note: If a yellow exclamation mark is displayed in front of the mouse name after re-detection, it indicates that the mouse driver is not successfully installed. Right-click the mouse name, and then select **Update Driver** or **Update Driver Software** to install the mouse driver again.

Problem: The mouse pointer cannot move.

Solution: To solve the problem, do the following:

- Ensure that you have followed all installation procedures.
- Reinstall the Lenovo Mouse Suite software.
- Clean the mouse lens with a soft cotton swab. Do not use any other liquid or solvent to clean the mouse lens because such item might damage the lens.
- Put a mouse pad under the mouse. If the mouse is moving on a highly reflective surface, especially a glass or mirror surface, the mouse might not be able to work.

Problem: The horizontal scrolling speed cannot be changed on the **Wheel** tab in the Mouse Properties window.

Solution: To solve the problem, customize the horizontal scrolling speed setting by doing the following:

1. In the Mouse Properties window, click the **Lenovo** tab. Then, click **Advanced Properties**.
2. In the Advanced Properties window, click the **Wheel** tab.
3. In the **Horizontal Scrolling** area, move the slider right to increase or left to decrease the horizontal scrolling speed.

Problem: The Lenovo Mouse Suite software cannot be automatically installed when I connect the ThinkPad X1 Wireless Touch Mouse to my computer for the first time.

Solution: To solve the problem, do the following:

1. Ensure that you are using the Windows 7, Windows 8, or Windows 8.1 operating system.
2. Ensure that your computer has been connected to the Internet.
3. Ensure that you have installed all Windows updates by doing the following:
 - a. For the Windows 7, Windows 8, or Windows 8.1 operating system, enter the control panel interface. Then, depending on your control panel mode, do one of the following:
 - Click **System and Security → Windows Update**.
 - Click **Windows Update**.

For the Windows 10 operating system, click the Start button to open the quick-access menu and then click **Settings**. Then click **Update & recovery → Windows Update**
 - b. Click **Check for updates** to install Windows updates.
4. Ensure that you have enabled the automatic Windows update feature by doing the following:
 - a. Enter the control panel interface.
 - b. Depending on your control panel mode, do one of the following:
 - Click **Hardware and Sound → Devices and Printers**.
 - Click **Devices and Printers**.
 - c. Right-click your computer icon under the **Devices** menu, and then select **Device installation settings**.
 - d. Follow the instructions on the screen to enable the automatic Windows update feature.
5. Connect the Lenovo USB Receiver to another USB connector which has not connected with it before.
6. Manually install the Lenovo Mouse Suite software by doing the following:
 - a. Go to <http://support.lenovo.com/mousesuite>.
 - b. Locate and download the installation file of the Lenovo Mouse Suite software.
 - c. Double-click the installation file, and then follow the instructions on the screen to complete the installation.

Note: In the Hardware Interface Selection window, select **Dual mode Interface (2.4Ghz+BT)**.

Problem: When connecting the USB receiver to a USB port on the side of a ThinkCentre AIO computer, and let the mouse work under 2.4Ghz wireless mode, the mouse is interrupted and the mouse pointer lags or it cannot move.

Solution:

- It is recommended that you connect your mouse receiver to a rear USB Port.
- Use you mouse in the Bluetooth mode.

Problem: When connecting the USB receiver to a USB connector on a pro dock, and let the mouse work under the 2.4Ghz wireless mode, the mouse is interrupted and the mouse pointer lags or it cannot move.

Solution:

- It is recommended that you connect your mouse receiver to a front USB 3.0 connector on the pro dock and avoid connecting another USB 3.0 device next to the connector with the receiver attached.
- Use you mouse in the Bluetooth mode.

Problem: The mouse is not recognized by your computer when using it in Bluetooth mode.

Solution: To solve the problem, do either of the following:

- Ensure to enable Bluetooth function on your computer.
- Restart your system
- Upgrade your Bluetooth driver to the latest manually or by the ThinkVantage System Upgrade application..
- Ensure that you have follow the instruction in “Installing the mouse” on page 2 to use the mouse in Bluetooth mode.
- Ensure that the mouse is within the maximum Bluetooth range (10 m).

Problem: Mouse working under Bluetooth mode may lose the connection with ThinkPad or ThinkCentre AIO randomly.

Solution:

- Ensure that the operating system is Micorsoft Windows 8 or later.
- To solve the problem, do the following:
 1. Click **Computer → Manage → Bluetooth** .
 2. Right-click the Bluetooth host you use. The Properties window is displayed.
 3. Click the **Power Management** tab, and then unselect **Allow the computer to turn off this device to save power** to disable the selective suspend function.

Problem: The mouse pointer cannot move smoothly.

Solution: Do not use the mouse on a highly reflective surface such as a glass or mirror surface or Regular Pattern, such as Nova surface and Printing Doc Surface. The mouse might not work properly on them. Use a mouse mat or white paper under the mouse when using it on a highly reflective surface.

Problem: The laser pointer is not shown after virtual Laser Pointer is enabled.

Solution: The laser pointer support only in Micorsoft PowerPiont. It might not work in other applications.

Appendix A. Service and Support

The following information describes the technical support that is available for your product, during the warranty period or throughout the life of your product. Refer to the Lenovo Limited Warranty for a full explanation of Lenovo warranty terms.

Online technical support

Online technical support is available during the lifetime of a product at:
<http://www.lenovo.com/support>

Product replacement assistance or exchange of defective components also is available during the warranty period. In addition, if your option is installed in a Lenovo computer, you might be entitled to service at your location. A Lenovo technical support representative can help you determine the best alternative.

Telephone technical support

Installation and configuration support through the Customer Support Center will be available until 90 days after the option has been withdrawn from marketing. After that time, the support is canceled, or made available for a fee, at Lenovo's discretion. Additional support is also available for a nominal fee.

Before contacting a Lenovo technical support representative, please have the following information available: option name and number, proof of purchase, computer manufacturer, model, serial number and manual, the exact wording of any error message, description of the problem, and the hardware and software configuration information for your system.

Your technical support representative might want to walk you through the problem while you are at your computer during the call.

Telephone numbers are subject to change without notice. The most up-to-date telephone list for Lenovo Support is always available at <http://www.lenovo.com/support/phone>. If the telephone number for your country or region is not listed, contact your Lenovo reseller or Lenovo marketing representative.

Accessibility information

Documentation in accessible formats

Lenovo provides electronic documentation in accessible formats, such as properly tagged PDF files or HyperText Markup Language (HTML) files. Lenovo electronic documentation is developed to ensure that visually impaired users can read the documentation through a screen reader. Each image in the documentation also includes adequate alternative text to explain the image so that visually impaired users can understand the image when they use a screen reader.

To open and view PDF files, your computer must have the Adobe Reader program installed. The Adobe Reader program also is available for download at:
<http://www.adobe.com>

Appendix B. Lenovo Limited Warranty

L505-0010-02 08/2011

This Lenovo Limited Warranty consists of the following parts:

Part 1 - General Terms

Part 2 - Country-specific Terms

Part 3 - Warranty Service Information

The terms of **Part 2** replace or modify terms of **Part 1** as specified for a particular country.

Part 1 - General Terms

This Lenovo Limited Warranty applies only to Lenovo hardware products you purchased for your own use and not for resale. This Lenovo Limited Warranty is available in other languages at www.lenovo.com/warranty.

What this Warranty Covers

Lenovo warrants that each Lenovo hardware product that you purchase is free from defects in materials and workmanship under normal use during the warranty period. The warranty period for the product starts on the original date of purchase as shown on your sales receipt or invoice or as may be otherwise specified by Lenovo. The warranty period and type of warranty service that apply to your product are as specified in “**Part 3 - Warranty Service Information**” below. This warranty only applies to products in the country or region of purchase.

THIS WARRANTY IS YOUR EXCLUSIVE WARRANTY AND REPLACES ALL OTHER WARRANTIES OR CONDITIONS, EXPRESS OR IMPLIED, INCLUDING, BUT NOT LIMITED TO, ANY IMPLIED WARRANTIES OR CONDITIONS OF MERCHANTABILITY OR FITNESS FOR A PARTICULAR PURPOSE. AS SOME STATES OR JURISDICTIONS DO NOT ALLOW THE EXCLUSION OF EXPRESS OR IMPLIED WARRANTIES, THE ABOVE EXCLUSION MAY NOT APPLY TO YOU. IN THAT EVENT, SUCH WARRANTIES APPLY ONLY TO THE EXTENT AND FOR SUCH DURATION AS REQUIRED BY LAW AND ARE LIMITED IN DURATION TO THE WARRANTY PERIOD. AS SOME STATES OR JURISDICTIONS DO NOT ALLOW LIMITATIONS ON THE DURATION OF AN IMPLIED WARRANTY, THE ABOVE LIMITATION ON DURATION MAY NOT APPLY TO YOU.

How to Obtain Warranty Service

If the product does not function as warranted during the warranty period, you may obtain warranty service by contacting Lenovo or a Lenovo approved Service Provider. A list of approved Service Providers and their telephone numbers is available at: www.lenovo.com/support/phone.

Warranty service may not be available in all locations and may differ from location to location. Charges may apply outside a Service Provider’s normal service area. Contact a local Service Provider for information specific to your location.

Customer Responsibilities for Warranty Service

Before warranty service is provided, you must take the following steps:

- follow the service request procedures specified by the Service Provider;

- backup or secure all programs and data contained in the product;
- provide the Service Provider with all system keys or passwords;
- provide the Service Provider with sufficient, free, and safe access to your facilities to perform service;
- remove all data, including confidential information, proprietary information and personal information, from the product or, if you are unable to remove any such information, modify the information to prevent its access by another party or so that it is not personal data under applicable law. The Service Provider shall not be responsible for the loss or disclosure of any data, including confidential information, proprietary information, or personal information, on a product returned or accessed for warranty service;
- remove all features, parts, options, alterations, and attachments not covered by the warranty;
- ensure that the product or part is free of any legal restrictions that prevent its replacement;
- if you are not the owner of a product or part, obtain authorization from the owner for the Service Provider to provide warranty service.

What Your Service Provider Will Do to Correct Problems

When you contact a Service Provider, you must follow the specified problem determination and resolution procedures.

The Service Provider will attempt to diagnose and resolve your problem by telephone, e-mail or remote assistance. The Service Provider may direct you to download and install designated software updates.

Some problems may be resolved with a replacement part that you install yourself called a “Customer Replaceable Unit” or “CRU.” If so, the Service Provider will ship the CRU to you for you to install.

If your problem cannot be resolved over the telephone; through the application of software updates or the installation of a CRU, the Service Provider will arrange for service under the type of warranty service designated for the product under “**Part 3 - Warranty Service Information**” below.

If the Service Provider determines that it is unable to repair your product, the Service Provider will replace it with one that is at least functionally equivalent.

If the Service Provider determines that it is unable to either repair or replace your product, your sole remedy under this Limited Warranty is to return the product to your place of purchase or to Lenovo for a refund of your purchase price.

Replacement Products and Parts

When warranty service involves the replacement of a product or part, the replaced product or part becomes Lenovo’s property and the replacement product or part becomes your property. Only unaltered Lenovo products and parts are eligible for replacement. The replacement product or part provided by Lenovo may not be new, but it will be in good working order and at least functionally equivalent to the original product or part. The replacement product or part shall be warranted for the balance of the period remaining on the original product.

Use of Personal Contact Information

If you obtain service under this warranty, you authorize Lenovo to store, use and process information about your warranty service and your contact information, including name, phone numbers, address, and e-mail address. Lenovo may use this information to perform service under this warranty. We may contact you to inquire about your satisfaction with our warranty service or to notify you about any product recalls or safety issues. In accomplishing these purposes, you authorize Lenovo to transfer your information to any country where we do business and to provide it to entities acting on our behalf. We may also disclose it where required by law. Lenovo’s privacy policy is available at www.lenovo.com/.

What this Warranty Does not Cover

This warranty does not cover the following:

- uninterrupted or error-free operation of a product;
- loss of, or damage to, your data by a product;
- any software programs, whether provided with the product or installed subsequently;
- failure or damage resulting from misuse, abuse, accident, modification, unsuitable physical or operating environment, natural disasters, power surges, improper maintenance, or use not in accordance with product information materials;
- damage caused by a non-authorized service provider;
- failure of, or damage caused by, any third party products, including those that Lenovo may provide or integrate into the Lenovo product at your request;
- any technical or other support, such as assistance with “how-to” questions and those regarding product set-up and installation;
- products or parts with an altered identification label or from which the identification label has been removed.

Limitation of Liability

Lenovo is responsible for loss or damage to your product only while it is in the Service Provider’s possession or in transit, if the Service Provider is responsible for the transportation.

Neither Lenovo nor the Service Provider is responsible for loss or disclosure of any data, including confidential information, proprietary information, or personal information, contained in a product.

UNDER NO CIRCUMSTANCES, AND NOTWITHSTANDING THE FAILURE OF ESSENTIAL PURPOSE OF ANY REMEDY SET FORTH HEREIN, SHALL LENOVO, ITS AFFILIATES, SUPPLIERS, RESELLERS, OR SERVICE PROVIDERS BE LIABLE FOR ANY OF THE FOLLOWING EVEN IF INFORMED OF THEIR POSSIBILITY AND REGARDLESS OF WHETHER THE CLAIM IS BASED IN CONTRACT, WARRANTY, NEGLIGENCE, STRICT LIABILITY OR OTHER THEORY OF LIABILITY: 1) THIRD PARTY CLAIMS AGAINST YOU FOR DAMAGES; 2) LOSS, DAMAGE OR DISCLOSURE OF YOUR DATA; 3) SPECIAL, INCIDENTAL, PUNITIVE, INDIRECT OR CONSEQUENTIAL DAMAGES, INCLUDING BUT NOT LIMITED TO LOST PROFITS, BUSINESS REVENUE, GOODWILL OR ANTICIPATED SAVINGS. IN NO CASE SHALL THE TOTAL LIABILITY OF LENOVO, ITS AFFILIATES, SUPPLIERS, RESELLERS OR SERVICE PROVIDERS FOR DAMAGES FROM ANY CAUSE EXCEED THE AMOUNT OF ACTUAL DIRECT DAMAGES, NOT TO EXCEED THE AMOUNT PAID FOR THE PRODUCT.

THE FOREGOING LIMITATIONS DO NOT APPLY TO DAMAGES FOR BODILY INJURY (INCLUDING DEATH), DAMAGE TO REAL PROPERTY OR DAMAGE TO TANGIBLE PERSONAL PROPERTY FOR WHICH LENOVO IS LIABLE UNDER LAW. AS SOME STATES OR JURISDICTIONS DO NOT ALLOW THE EXCLUSION OR LIMITATION OF INCIDENTAL OR CONSEQUENTIAL DAMAGES, THE ABOVE LIMITATION OR EXCLUSION MAY NOT APPLY TO YOU.

Your Other Rights

THIS WARRANTY GIVES YOU SPECIFIC LEGAL RIGHTS. YOU MAY HAVE OTHER RIGHTS ACCORDING TO THE APPLICABLE LAWS OF YOUR STATE OR JURISDICTION. YOU MAY ALSO HAVE OTHER RIGHTS UNDER A WRITTEN AGREEMENT WITH LENOVO. NOTHING IN THIS WARRANTY AFFECTS STATUTORY RIGHTS, INCLUDING RIGHTS OF CONSUMERS UNDER LAWS OR REGULATIONS GOVERNING THE SALE OF CONSUMER GOODS THAT CANNOT BE WAIVED OR LIMITED BY CONTRACT.

Part 2 - Country-specific Terms

Australia

“Lenovo” means Lenovo (Australia & New Zealand) Pty Limited ABN 70 112 394 411. Address: Level 10, North Tower, 1-5 Railway Street, Chatswood, NSW, 2067. Telephone: +61 2 8003 8200. Email: lensyd_au@lenovo.com

The following replaces the same section in Part 1:

What this Warranty Covers:

Lenovo warrants that each hardware product that you purchase is free from defects in materials and workmanship under normal use and conditions during the warranty period. If the product fails due to a covered defect during the warranty period, Lenovo will provide you a remedy under this Limited Warranty. The warranty period for the product starts on the original date of purchase specified on your sales receipt or invoice unless Lenovo informs you otherwise in writing. The warranty period and type of warranty service that apply to your product are set forth below in **Part 3 - Warranty Service Information**.

THE BENEFITS GIVEN BY THIS WARRANTY ARE IN ADDITION TO YOUR RIGHTS AND REMEDIES AT LAW, INCLUDING THOSE UNDER THE AUSTRALIAN CONSUMER LAW.

The following replaces the same section in Part 1:

Replacement Products and Parts:

When warranty service involves the replacement of a product or part, the replaced product or part becomes Lenovo’s property and the replacement product or part becomes your property. Only unaltered Lenovo products and parts are eligible for replacement. The replacement product or part provided by Lenovo may not be new, but it will be in good working order and at least functionally equivalent to the original product or part. The replacement product or part shall be warranted for the balance of the period remaining on the original product. Products and parts presented for repair may be replaced by refurbished products or parts of the same type rather than being repaired. Refurbished parts may be used to repair the product; and repair of the product may result in loss of data, if the product is capable of retaining user-generated data.

The following is added to the same section in Part 1:

Use of Personal Contact Information:

Lenovo will not be able to perform our service under this warranty if you refuse to provide your information or do not wish us to transfer your information to our agent or contractor. You have the right to access your personal contact information and request correction of any errors in it pursuant to the Privacy Act 1988 by contacting Lenovo.

The following replaces the same section in Part 1:

Limitation of Liability:

Lenovo is responsible for loss or damage to your product only while it is in the Service Provider’s possession or in transit, if the Service Provider is responsible for the transportation.

Neither Lenovo nor the Service Provider is responsible for loss or disclosure of any data, including confidential information, proprietary information, or personal information, contained in a product.

TO THE EXTENT PERMITTED BY LAW, UNDER NO CIRCUMSTANCES AND NOTWITHSTANDING THE FAILURE OF ESSENTIAL PURPOSE OF ANY REMEDY SET FORTH HEREIN, SHALL LENOVO, ITS AFFILIATES, SUPPLIERS, RESELLERS, OR SERVICE PROVIDERS BE LIABLE FOR ANY OF THE FOLLOWING EVEN IF INFORMED OF THEIR POSSIBILITY AND REGARDLESS OF WHETHER THE CLAIM IS BASED IN CONTRACT, WARRANTY, NEGLIGENCE, STRICT LIABILITY OR OTHER THEORY

OF LIABILITY: 1) THIRD PARTY CLAIMS AGAINST YOU FOR DAMAGES; 2) LOSS, DAMAGE OR DISCLOSURE OF YOUR DATA; 3) SPECIAL, INCIDENTAL, PUNITIVE, INDIRECT OR CONSEQUENTIAL DAMAGES, INCLUDING BUT NOT LIMITED TO LOST PROFITS, BUSINESS REVENUE, GOODWILL OR ANTICIPATED SAVINGS. IN NO CASE SHALL THE TOTAL LIABILITY OF LENOVO, ITS AFFILIATES, SUPPLIERS, RESELLERS OR SERVICE PROVIDERS FOR DAMAGES FROM ANY CAUSE EXCEED THE AMOUNT OF ACTUAL DIRECT DAMAGES, NOT TO EXCEED THE AMOUNT PAID FOR THE PRODUCT.

THE FOREGOING LIMITATIONS DO NOT APPLY TO DAMAGES FOR BODILY INJURY (INCLUDING DEATH), DAMAGE TO REAL PROPERTY OR DAMAGE TO TANGIBLE PERSONAL PROPERTY FOR WHICH LENOVO IS LIABLE UNDER LAW.

The following replaces the same section in Part 1:

Your Other Rights:

THIS WARRANTY GIVES YOU SPECIFIC LEGAL RIGHTS. YOU ALSO HAVE OTHER RIGHTS AT LAW, INCLUDING UNDER THE AUSTRALIAN CONSUMER LAW. NOTHING IN THIS WARRANTY AFFECTS STATUTORY RIGHTS OR RIGHTS AT LAW, INCLUDING RIGHTS THAT CANNOT BE WAIVED OR LIMITED BY CONTRACT.

For example, our products come with guarantees that cannot be excluded under the Australian Consumer Law. You are entitled to a replacement or refund for a major failure and compensation for any other reasonably foreseeable loss or damage. You are also entitled to have the products repaired or replaced if the products fail to be of acceptable quality and the failure does not amount to a major failure.

New Zealand

The following is added to the same section in Part 1:

Use of Personal Information:

Lenovo will not be able to perform our service under this warranty if you refuse to provide your information or do not wish us to transfer your information to our agent or contractor. You have the right to access your personal information and request correction of any errors in it pursuant to the Privacy Act 1993 by contacting Lenovo (Australia & New Zealand) Pty Limited ABN 70 112 394 411. Address: Level 10, North Tower, 1-5 Railway Street, Chatswood, NSW, 2067. Telephone: 61 2 8003 8200. Email: lensyd_au@lenovo.com

Bangladesh, Cambodia, India, Indonesia, Nepal, Philippines, Vietnam and Sri Lanka

The following is added to Part 1:

Dispute Resolution

Disputes arising out of or in connection with this warranty shall be finally settled by arbitration held in Singapore. This warranty shall be governed, construed and enforced in accordance with the laws of Singapore, without regard to conflict of laws. If you acquired the product in **India**, disputes arising out of or in connection with this warranty shall be finally settled by arbitration held in Bangalore, India. Arbitration in Singapore shall be held in accordance with the Arbitration Rules of Singapore International Arbitration Center ("SIAC Rules") then in effect. Arbitration in India shall be held in accordance with the laws of India then in effect. The arbitration award shall be final and binding on the parties without appeal. Any award shall be in writing and set forth the findings of fact and the conclusions of law. All arbitration proceedings, including all documents presented in such proceedings shall be conducted in the English language. The English language version of this warranty prevails over any other language version in such proceedings.

European Economic Area (EEA)

The following is added to Part 1:

Customers in the EEA may contact Lenovo at the following address: EMEA Service Organisation, Lenovo (International) B.V., Floor 2, Einsteinova 21, 851 01, Bratislava, Slovakia. Service under this warranty for Lenovo hardware products purchased in EEA countries may be obtained in any EEA country in which the product has been announced and made available by Lenovo.

Russia

The following is added to Part 1:

Product Service Life

The product service life is four (4) years from the original date of purchase.

Part 3 - Warranty Service Information

Product Type	Country or Region of Purchase	Warranty Period	Type of Warranty Service
ThinkPad X1 Wireless Touch Mouse	Worldwide	1 year	1, 4

If required, your Service Provider will provide repair or exchange service depending on the type of warranty service specified for your product and the available service. Scheduling of service will depend upon the time of your call, parts availability, and other factors.

Types of Warranty Service

1. Customer Replaceable Unit (“CRU”) Service

Under CRU Service, the Service Provider will ship CRUs to you at its cost for installation by you. CRU information and replacement instructions are shipped with your product and are available from Lenovo at any time upon request. CRUs that are easily installed by you are called “Self-service CRUs”. “Optional-service CRUs” are CRUs that may require some technical skill and tools. Installation of Self-service CRUs is your responsibility. You may request that a Service Provider install Optional-service CRUs under one of the other types of warranty service designated for your product. An optional service offering may be available for purchase from a Service Provider or Lenovo under which Self-service CRUs would be installed for you. You may find a list of CRUs and their designation in the publication that was shipped with your product or at www.lenovo.com/CRUs. The requirement to return a defective CRU, if any, will be specified in the instructions shipped with a replacement CRU. When return is required: 1) return instructions, a prepaid return shipping label, and a container will be included with the replacement CRU; and 2) you may be charged for the replacement CRU if the Service Provider does not receive the defective CRU from you within thirty (30) days of your receipt of the replacement CRU.

2. On-site Service

Under On-Site Service, a Service Provider will either repair or exchange the product at your location. You must provide a suitable working area to allow disassembly and reassembly of the product. Some repairs may need to be completed at a service center. If so, the Service Provider will send the product to the service center at its expense.

3. Courier or Depot Service

Under Courier or Depot Service, your product will be repaired or exchanged at a designated service center, with shipping at the expense of the Service Provider. You are responsible for disconnecting the product and

packing it in a shipping container provided to you to return your product to a designated service center. A courier will pick up your product and deliver it to the designated service center. The service center will return the product to you at its expense.

4. Customer Carry-In Service

Under Customer Carry-In Service, your product will be repaired or exchanged after you deliver it to a designated service center at your risk and expense. After the product has been repaired or exchanged, it will be made available to you for collection. If you fail to collect the product, the Service Provider may dispose of the product as it sees fit, with no liability to you.

5. Mail-In Service

Under Mail-In Service, your product will be repaired or exchanged at a designated service center after you deliver it at your risk and expense. After the product has been repaired or exchanged, it will be returned to you at Lenovo's risk and expense, unless the Service Provider specifies otherwise.

6. Customer Two-Way Mail-In Service

Under Customer Two-Way Mail-In Service, your product will be repaired or exchanged after you deliver it to a designated service center at your risk and expense. After the product has been repaired or exchanged, it will be made available to you for return shipping at your risk and expense. If you fail to arrange return shipment, the Service Provider may dispose of the product as it sees fit, with no liability to you.

7. Product Exchange Service

Under Product Exchange Service, Lenovo will ship a replacement product to your location. You are responsible for its installation and verification of its operation. The replacement product becomes your property in exchange for the failed product, which becomes the property of Lenovo. You must pack the failed product in the shipping carton in which you received the replacement product and return it to Lenovo. Transportation charges, both ways, shall be at Lenovo's expense. If you fail to use the carton in which the replacement product was received, you may be responsible for any damage to the failed product occurring during shipment. You may be charged for the replacement product if Lenovo does not receive the failed product within thirty (30) days of your receipt of the replacement product.

Suplemento de Garantía para México

Este Suplemento de Garantía se considera parte integrante de la Garantía Limitada de Lenovo y será efectivo única y exclusivamente para los productos distribuidos y comercializados dentro del Territorio de los Estados Unidos Mexicanos. En caso de conflicto, se aplicarán los términos de este Suplemento.

El comercializador responsable del producto es Lenovo México S de R L de CV y para efectos de esta garantía en la República Mexicana su domicilio es Paseo de Tamarindos No.400-A Piso 27 Arcos Torre Poniente, Bosques de Las Lomas, Delegación Miguel Hidalgo, C.P. 05120 México, D.F. En el caso de que se precise una reparación cubierta por la garantía o precise de partes, componentes, consumibles o accesorios diríjase a este domicilio.

Si no existiese ningún Centro de servicio autorizado en su ciudad, población o en un radio de 70 kilómetros de su ciudad o población, la garantía incluirá cualquier gasto de entrega razonable relacionado con el transporte del producto a su Centro de servicio autorizado más cercano. Por favor, llame al Centro de servicio autorizado más cercano para obtener las aprobaciones necesarias o la información relacionada con el envío del producto y la dirección de envío.

Esta garantía ampara todas las piezas de hardware del producto e incluye mano de obra.

El procedimiento para hacer efectiva la garantía consiste en la presentación del producto, acompañado de la póliza correspondiente, debidamente sellada por el establecimiento que lo vendió, o la factura, o recibo o comprobante, en el que consten los datos específicos del producto objeto de la compraventa.

Lenovo sólo pueden eximirse de hacer efectiva la garantía en los siguientes casos: a) Cuando el producto se hubiese utilizado en condiciones distintas a las normales. b) Cuando el producto no hubiese sido operado de acuerdo con el instructivo de uso que se le acompaña. c) Cuando el producto hubiese sido alterado o reparado por personas no autorizadas por el fabricante nacional, importador o comercializador responsable respectivo.

Todos los programas de software precargados en el equipo sólo tendrán una garantía de noventa (90) días por defectos de instalación desde la fecha de compra. Lenovo no es responsable de la información incluida en dichos programas de software y /o cualquier programa de software adicional instalado por Usted o instalado después de la compra del producto.

La garantía cubre la atención, revisión y corrección de errores, defectos o inconsistencias que impidan el desempeño normal de un equipo de cómputo en cuanto a su hardware y software. Los servicios no cubiertos por la garantía se cargarán al usuario final, previa obtención de una autorización.

Esta garantía tiene una duración de un año a partir del momento de la compra e incluye la mano de obra, por lo que en caso de aplicarse la garantía, esta no causara ningún gasto o costo para el cliente.

Centros de Servicios autorizados para hacer efectiva la garantía:

- Lenovo México con domicilio en Paseo de Tamarindos No.400-A Piso 27 Arcos, Torre Poniente, Bosques de Las Lomas, Delegación Miguel Hidalgo, C.P. 05120 México, D.F. Teléfono 01800- 083-4916, http://support.lenovo.com/es_MX/product-service/service-provider/default.page
- Lenovo Monterrey con domicilio en Boulevard Escobedo No.316, Apodaca Technology Park, Apodaca, C.P. 66601, Nuevo León, México. Teléfono 01800- 083-4916, http://support.lenovo.com/es_MX/product-service/service-provider/default.page

Importado por:

Lenovo México S. de R.L. de C.V.

Av. Santa Fe 505, Piso 15

Col. Cruz Manca

Cuajimalpa, D.F., México

C.P. 05349

Tel. (55) 5000 8500

Appendix C. Electronic emission notices

The following information refers to:

- ThinkPad X1 Wireless Touch Mouse

Federal Communications Commission Declaration of Conformity

ThinkPad X1 Wireless Touch Mouse - MOBTJNL

This equipment has been tested and found to comply with the limits for a Class B digital device, pursuant to Part 15 of the FCC Rules. These limits are designed to provide reasonable protection against harmful interference in a residential installation. This equipment generates, uses, and can radiate radio frequency energy and, if not installed and used in accordance with the instructions, may cause harmful interference to radio communications. However, there is no guarantee that interference will not occur in a particular installation. If this equipment does cause harmful interference to radio or television reception, which can be determined by turning the equipment off and on, the user is encouraged to try to correct the interference by one or more of the following measures:

- Reorient or relocate the receiving antenna.
- Increase the separation between the equipment and receiver.
- Connect the equipment into an outlet on a circuit different from that to which the receiver is connected.
- Consult an authorized dealer or service representative for help.

Lenovo is not responsible for any radio or television interference caused by using other than specified or recommended cables and connectors or by unauthorized changes or modifications to this equipment. Unauthorized changes or modifications could void the user's authority to operate the equipment.

This device complies with Part 15 of the FCC Rules. Operation is subject to the following two conditions: (1) this device may not cause harmful interference, and (2) this device must accept any interference received, including interference that may cause undesired operation.

Responsible Party:
Lenovo (United States) Incorporated
1009 Think Place - Building One
Morrisville, NC 27560
Phone Number: 919-294-5900



RF Exposure Statement

The radiated energy from the ThinkPad X1 Wireless Touch Mouse conforms to the FCC limit of the SAR (Specific Absorption Rate) requirement set forth in 47 CFR Part 2 section 1093.

Industry Canada Compliance Statement

CAN ICES-3(B)/NMB-3(B)

European Union - Compliance to the Electromagnetic Compatibility Directive

This product is in conformity with the protection requirements of EU Council Directive 2004/108/EC on the approximation of the laws of the Member States relating to electromagnetic compatibility. Lenovo cannot accept responsibility for any failure to satisfy the protection requirements resulting from a non-recommended modification of the product, including the installation of option cards from other manufacturers.

This product has been tested and found to comply with the limits for Class B Information Technology Equipment according to European Standard EN 55022. The limits for Class B equipment were derived for typical residential environments to provide reasonable protection against interference with licensed communication devices.

Lenovo, Einsteinova 21, 851 01 Bratislava, Slovakia



German Class B compliance statement

Deutschsprachiger EU Hinweis:

Hinweis für Geräte der Klasse B EU-Richtlinie zur Elektromagnetischen Verträglichkeit

Dieses Produkt entspricht den Schutzanforderungen der EU-Richtlinie 2004/108/EG (früher 89/336/EWG) zur Angleichung der Rechtsvorschriften über die elektromagnetische Verträglichkeit in den EU-Mitgliedsstaaten und hält die Grenzwerte der EN 55022 Klasse B ein.

Um dieses sicherzustellen, sind die Geräte wie in den Handbüchern beschrieben zu installieren und zu betreiben. Des Weiteren dürfen auch nur von der Lenovo empfohlene Kabel angeschlossen werden. Lenovo übernimmt keine Verantwortung für die Einhaltung der Schutzanforderungen, wenn das Produkt ohne Zustimmung der Lenovo verändert bzw. wenn Erweiterungskomponenten von Fremdherstellern ohne Empfehlung der Lenovo gesteckt/eingebaut werden.

Deutschland:

Einhaltung des Gesetzes über die elektromagnetische Verträglichkeit von Betriebsmitteln

Dieses Produkt entspricht dem „Gesetz über die elektromagnetische Verträglichkeit von Betriebsmitteln“ EMVG (früher „Gesetz über die elektromagnetische Verträglichkeit von Geräten“). Dies ist die Umsetzung der EU-Richtlinie 2004/108/EG (früher 89/336/EWG) in der Bundesrepublik Deutschland.

Zulassungsbescheinigung laut dem Deutschen Gesetz über die elektromagnetische Verträglichkeit von Betriebsmitteln, EMVG vom 20. Juli 2007 (früher Gesetz über die elektromagnetische Verträglichkeit von Geräten), bzw. der EMV EG Richtlinie 2004/108/EC (früher 89/336/EWG), für Geräte der Klasse B.

Dieses Gerät ist berechtigt, in Übereinstimmung mit dem Deutschen EMVG das EG-Konformitätszeichen - CE - zu führen. Verantwortlich für die Konformitätserklärung nach Paragraf 5 des EMVG ist die Lenovo (Deutschland) GmbH, Meitnerstr. 9, D-70563 Stuttgart.

Informationen in Hinsicht EMVG Paragraf 4 Abs. (1) 4:

Das Gerät erfüllt die Schutzanforderungen nach EN 55024 und EN 55022 Klasse B.

Korea Class B compliance statement

B급 기기(가정용 방송통신기자재)
이 기기는 가정용(B급) 전자파적합기기로서 주로 가정에서 사용하는 것을 목적으로 하며, 모든 지역에서 사용할 수 있습니다.

Lenovo product service information for Taiwan

台灣 Lenovo 產品服務資訊如下：
荷蘭商聯想股份有限公司台灣分公司
台北市內湖區堤頂大道二段89號5樓
服務電話：0800-000-702

Notice for users in Taiwan

根據NCC低功率電波輻射性電機管理辦法規定：

- 第十二條 經型式認證合格之低功率射頻電機，非經許可，公司、商號或使用者均不得擅自變更頻率、加大功率或變更原設計之特性及功能。
- 第十四條 低功率射頻電機之使用不得影響飛航安全及干擾合法通信；經發現有干擾現象時，應立即停用，並改善到無干擾時方得繼續使用。
- 前項合法通信，指依電信法規定作業之無線電通信。
- 低功率射頻電機須忍受合法通信或工業、科學及醫療用電波輻射性電機設備之干擾。

Eurasian compliance mark - For ThinkPad X1 Wireless Touch Mouse



Mexico regulatory notice

Advertencia: En Mexico la operación de este equipo está sujeta a las siguientes dos condiciones: (1) es posible que este equipo o dispositivo no cause interferencia perjudicial y (2) este equipo o dispositivo debe aceptar cualquier interferencia, incluyendo la que pueda causar su operación no deseada.

Appendix D. Notices

Lenovo may not offer the products, services, or features discussed in this document in all countries. Consult your local Lenovo representative for information on the products and services currently available in your area. Any reference to a Lenovo product, program, or service is not intended to state or imply that only that Lenovo product, program, or service may be used. Any functionally equivalent product, program, or service that does not infringe any Lenovo intellectual property right may be used instead. However, it is the user's responsibility to evaluate and verify the operation of any other product, program, or service.

Lenovo may have patents or pending patent applications covering subject matter described in this document. The furnishing of this document does not give you any license to these patents. You can send license inquiries, in writing, to:

*Lenovo (United States), Inc.
1009 Think Place - Building One
Morrisville, NC 27560
U.S.A.
Attention: Lenovo Director of Licensing*

LENOVO PROVIDES THIS PUBLICATION "AS IS" WITHOUT WARRANTY OF ANY KIND, EITHER EXPRESS OR IMPLIED, INCLUDING, BUT NOT LIMITED TO, THE IMPLIED WARRANTIES OF NON-INFRINGEMENT, MERCHANTABILITY OR FITNESS FOR A PARTICULAR PURPOSE. Some jurisdictions do not allow disclaimer of express or implied warranties in certain transactions, therefore, this statement may not apply to you.

This information could include technical inaccuracies or typographical errors. Changes are periodically made to the information herein; these changes will be incorporated in new editions of the publication. Lenovo may make improvements and/or changes in the product(s) and/or the program(s) described in this publication at any time without notice.

Recycling and environmental information

Lenovo encourages owners of information technology (IT) equipment to responsibly recycle their equipment when it is no longer needed. Lenovo offers a variety of programs and services to assist equipment owners in recycling their IT products. For information on recycling Lenovo products, go to:
<http://www.lenovo.com/recycling>

Recycling and disposal information for Japan is available at:
<http://www.lenovo.com/recycling/japan>

The latest environmental information about our products is available at:
<http://www.lenovo.com/ecodeclaration>

Recycling information for China

《废弃电器电子产品回收处理管理条例》提示性说明

联想鼓励拥有联想品牌产品的用户当不再需要此类产品时，遵守国家废弃电器电子产品回收处理相关法律法规，将其交给当地具有国家认可的回收处理资质的厂商进行回收处理。更多回收服务信息，请点击进入
<http://support.lenovo.com.cn/activity/551.htm>

Recycling information for Brazil

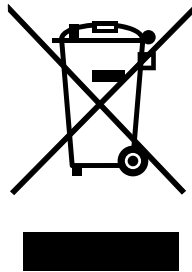
Declarações de Reciclagem no Brasil

Descarte de um Produto Lenovo Fora de Uso

Equipamentos elétricos e eletrônicos não devem ser descartados em lixo comum, mas enviados à pontos de coleta, autorizados pelo fabricante do produto para que sejam encaminhados e processados por empresas especializadas no manuseio de resíduos industriais, devidamente certificadas pelos órgãos ambientais, de acordo com a legislação local.

A Lenovo possui um canal específico para auxiliá-lo no descarte desses produtos. Caso você possua um produto Lenovo em situação de descarte, ligue para o nosso SAC ou encaminhe um e-mail para: reciclar@lenovo.com, informando o modelo, número de série e cidade, a fim de enviarmos as instruções para o correto descarte do seu produto Lenovo.

Important WEEE information



The WEEE marking on Lenovo products applies to countries with WEEE and e-waste regulations (for example, the European WEEE Directive, India E-Waste Management & Handling Rules, 2011). Appliances are labeled in accordance with local regulations concerning waste electrical and electronic equipment (WEEE). These regulations determine the framework for the return and recycling of used appliances as applicable within each geography. This label is applied to various products to indicate that the product is not to be thrown away, but rather put in the established collection systems for reclaiming these end of life products.

Users of electrical and electronic equipment (EEE) with the WEEE marking must not dispose of end of life EEE as unsorted municipal waste, but use the collection framework available to them for the return, recycle, and recovery of WEEE and to minimize any potential effects of EEE on the environment and human health due to the presence of hazardous substances. For additional WEEE information go to: <http://www.lenovo.com/recycling>

Export Classification Notice

This product is subject to the United States Export Administration regulations (EAR) and has an Export Classification Control Number (ECCN) of 5A992.c. It can be re-exported except to any of the embargoed countries in the EAR E1 country list.

Trademarks

The following terms are trademarks of Lenovo in the United States, other countries, or both:

Lenovo

The Lenovo logo

ThinkPad

Microsoft, Windows, and Windows Vista are trademarks of the Microsoft group of companies.

Other company, product, or service names may be trademarks or service marks of others.

Appendix E. Restriction of Hazardous Substances Directive (RoHS)

European Union RoHS

This Lenovo product, with included parts (cables, cords, and so on) meets the requirements of Directive 2011/65/EU on the restriction of the use of certain hazardous substances in electrical and electronic equipment ("RoHS recast" or "RoHS 2").

For more information about Lenovo worldwide compliance on RoHS, go to:
http://www.lenovo.com/social_responsibility/us/en/RoHS_Communication.pdf


China RoHS

为满足中国电子电气产品有害物质限制相关的法律法规和其他要求，联想公司对本产品中有害物质，按部件分类，声明如下。

部件名称	有害物质					
	铅 (Pb)	汞 (Hg)	镉 (Cd)	六价铬 (Cr (VI))	多溴联苯 (PBB)	多溴二苯醚 (PBDE)
印刷电路板组件*	X	O	O	O	O	O
外壳及附件	X	O	O	O	O	O

本表格依据SJ/T 11364的规定编制。
O：表示该有害物质在该部件所有均质材料中的含量均在GB/T 26572规定的限量要求以下。
X：表示该有害物质至少在该部件的某一均质材料中的含量超出GB/T 26572规定的限量要求。
表中标记“X”的部件，皆因全球技术发展水平限制而无法实现有害物质的替代。

印刷电路板组件*：包括印刷电路板及其零部件，电子元器件等
根据产品型号不同，您所购买的产品可能不会含有以上所有部件

 在中华人民共和国境内销售的电子电气产品上将印有“环保使用期”(EPuP)符号。
圆圈中的数字代表产品的正常环保使用年限。

Turkish RoHS

The Lenovo product meets the requirements of the Republic of Turkey Directive on the Restriction of the Use of Certain Hazardous Substances in Waste Electrical and Electronic Equipment (WEEE).

Türkiye AEEE Yönetmeliğine Uygunluk Beyanı

Bu Lenovo ürünü, T.C. Çevre ve Orman Bakanlığı'nın "Atık Elektrik ve Elektronik Eşyalarda Bazı Zararlı Maddelerin Kullanımının Sınırlandırılmasına Dair Yönetmelik (AEEE)" direktiflerine uygundur.

AEEE Yönetmeliğine Uygundur.

Ukraine RoHS

Цим підтверджуємо, що продукція Леново відповідає вимогам нормативних актів України, які обмежують вміст небезпечних речовин

India RoHS

RoHS compliant as per E-Waste (Management & Handling) Rules, 2011.



Part Number: SP40K57909

Printed in China

(1P) P/N: SP40K57909



About this document

This document provides regulatory information about ThinkPad® X1 Wireless Touch Mouse.

Federal Communications Commission Declaration of Conformity

ThinkPad X1 Wireless Touch Mouse - MOBTJNL(FCC ID: A5MMOBTJNL)

Dongle for ThinkPad X1 Wireless Touch Mouse - DGRFG4 (FCC ID: EMJDDGRFG4)

Note:

The ThinkPad X1 Wireless Touch Mouse (Model: MOBTJNL) and the ThinkPad dongle (Model: DGRFG4) underwent certification process for the FCC Part 15 Subpart B compliance under its FCC ID number.

This equipment has been tested and found to comply with the limits for a Class B digital device, pursuant to Part 15 of the FCC Rules. These limits are designed to provide reasonable protection against harmful interference in a residential installation. This equipment generates, uses, and can radiate radio frequency energy and, if not installed and used in accordance with the instructions, may cause harmful interference to radio communications. However, there is no guarantee that interference will not occur in a particular installation. If this equipment does cause harmful interference to radio or television reception, which can be determined by turning the equipment off and on, the user is encouraged to try to correct the interference by one or more of the following measures:

- Reorient or relocate the receiving antenna.
- Increase the separation between the equipment and receiver.
- Connect the equipment into an outlet on a circuit different from that to which the receiver is connected.
- Consult an authorized dealer or service representative for help.

Lenovo is not responsible for any radio or television interference caused by using other than specified or recommended cables and connectors or by unauthorized changes or modifications to this equipment. Unauthorized changes or modifications could void the user's authority to operate the equipment. This device complies with Part 15 of the FCC Rules. Operation is subject to the following two conditions:(1) this device may not cause harmful interference, and (2) this device must accept any interference received, including interference that may cause undesired operation.

Responsible Party:
Lenovo (United States) Incorporated
1009 Think Place - Building One
Morrisville, NC 27560
Phone Number: 919-294-5900



RF Exposure compliance

The radiated energy from the ThinkPad X1 Wireless Touch Mouse and the ThinkPad dongle conforms to the FCC limit of the SAR (Specific Absorption Rate) requirement set forth in 47 CFR Part 2 section 1093.

Canada — Industry Canada (IC)

IC Number

ThinkPad X1 Wireless Touch Mouse - MOBTJNL(IC ID: 5903G-MOBTJNL)

Dongle for ThinkPad X1 Wireless Touch Mouse - DGRFG4(IC ID: 4251A-DDGRFG4)

Low power license-exempt radio communication devices

This device complies with Industry Canada's licence-exempt RSSs. Operation is subject to the following two conditions:

1. This device may not cause interference; and
2. This device must accept any interference, including interference that may cause undesired operation of the device.

Exposure of humans to RF fields (RSS-102)

The device employs low gain integral antennas that do not emit RF field in excess of Health Canada limits for the general population; consult Safety Code 6, obtainable from Health Canada's Web site at <http://www.hc-sc.gc.ca/>.

The radiated energy from the antennas connected to the wireless adapters conforms to the IC limit of the RF exposure requirement regarding IC RSS-102, Issue 5.

Numéro d'homologation IC

ThinkPad X1 Wireless Touch Mouse - MOBTJNL(IC ID: 5903G-MOBTJNL)

Dongle for ThinkPad X1 Wireless Touch Mouse - DGRFG4(IC ID: 4251A-DDGRFG4)

Remarque relative aux appareils de communication radio de faible puissance sans licence

Le présent appareil est conforme aux CNR d'Industrie Canada applicables aux appareils radio exempts de licence. L'exploitation est autorisée aux deux conditions suivantes :

1. l'appareil ne doit pas produire de brouillage;
2. l'utilisateur de l'appareil doit accepter tout brouillage radioélectrique subi, même si le brouillage est susceptible d'en compromettre le fonctionnement.

Exposition des êtres humains aux champs radioélectriques (RF) (CNR-102)

Cet équipement utilise des antennes intégrales à faible gain qui n'émettent pas un champ électromagnétique supérieur aux normes imposées par le Ministère de la santé canadien pour la population. Consultez le Safety Code 6 sur le site Web du Ministère de la santé canadien à l'adresse <http://www.hc-sc.gc.ca>.

Cet appareil émise par les antennes reliées aux adaptateurs sans fil respecte la limite d'exposition aux radiofréquences telle que définie par Industrie Canada dans la document CNR-102, version 5.

Europe – EU Declaration of Conformity

Products intended for sale within the European Union are marked with the Conformité Européenne (CE) Marking, which indicates compliance with the applicable Directives and European Norms, and amendments, identified below.

For model: MOBTJNL and DGRFG4

Lenovo, Digital Park, Einsteinova 21, 851 01 Bratislava, Slovakia



English

Hereby, Lenovo (Singapore) Pte. Ltd., declares that the wireless equipment listed in this section are in compliance with the essential requirements and other relevant provisions of Directive 1999/5/EC.

Bulgarian

С настоящето Lenovo (Singapore) Pte. Ltd. декларира, че модемът и безжичното оборудване, посочени в този раздел, са в съответствие с основните изисквания и другите уместни условия на Директива 1999/5/EC.

Croatia

Ovime, Lenovo (Singapore) Pte. Ltd., izjavljuje da oprema za bežičnu komunikaciju koja je navedena u ovom odjelu, sukladna je sa nužnim zahtjevima i drugim ograničenjima Direktive 1995/5/EC.

Czech

Lenovo (Singapore) Pte. Ltd. tímto prohlašuje, že modem a bezdrátová zařízení uvedené v této části jsou ve shodě se základními požadavky a dalšími relevantními ustanoveními směrnice 1999/5/EC.

Danish

Lenovo (Singapore) Pte. Ltd. erklærer hermed, at det trådløst udstyr, der er nævnt i dette afsnit, overholder de væsentlige krav og andre relevante bestemmelser i EU-direktiv 1999/5/EC.

Dutch

Hierbij verklaart Lenovo (Singapore) Pte. Ltd., dat de draadloze apparatuur die in dit gedeelte worden genoemd, voldoen aan de essentiële vereisten en andere relevante bepalingen van Directive 1999/5/EC.

Estonian

Lenovo (Singapore) Pte. Ltd. kinnitab selles jaotises nimetatud traadita side seadmete vastavust direktiivi 1999/5/EÜ põhinõuetele ja nimetatud direktiivist tulenevatele muudele asjakohastele sätetele.

Finnish

Lenovo (Singapore) Pte. Ltd. ilmoittaa täten, että tässä jaksossa mainittu langaton laitteisto ovat direktiivin 1999/5/EY pakollisten vaatimusten ja direktiivin muiden asiaankuuluvien määräysten mukaiset.

French

Par la présente, Lenovo (Singapore) Pte. Ltd. déclare que le matériel sans fil répertoriés dans cette section sont conformes aux exigences essentielles ainsi qu'aux autres dispositions applicables de la Directive 1999/5/CE.

German

Hiermit erklärt Lenovo (Singapur) Pte. Ltd., dass die drahtlosen Geräte, die in diesem Abschnitt aufgeführt sind, die Voraussetzungen und andere relevanten Richtlinien der Direktive 1999/5/EC erfüllen.

Greek

H Lenovo (Singapore) Pte. Ltd. δηλώνει με την παρούσα ότι το modem και ο εξοπλισμός ασύρματης σύνδεσης που αναφέρονται σε αυτή την ενότητα συμμορφώνονται με τις ουσιώδεις απαιτήσεις και άλλες σχετικές διατάξεις της Οδηγίας 1999/5/EC της Ευρωπαϊκής Ένωσης.

Hungarian

A Lenovo (Szingapúr) Pte. Ltd. ezúton is kijelenti, hogy a modem és az itt feltüntetett rádiós eszköz megfelel az 1999/5/EC direktívában megfogalmazott alapvető követelményeknek és vonatkozó ajánlásoknak.

Icelandic

Hér með lýsir Lenovo (Singapore) Pte. Ltd. því yfir að þráðlausí búnaðurinn sem getið er í þessum hluta uppfylla allar kröfur og önnur viðkomandi ákvæði tilskipunar 1999/5/EC.

Italian

Con la presente, Lenovo (Singapore) Pte. Ltd., dichiara che l'equipaggiamento wireless elencato in questa sezione è conforme ai requisiti essenziali e ad altre disposizioni rilevanti della direttiva 1999/5/EC.

Latvian

Ar šo uzņēmums Lenovo (Singapūra) Pte. Ltd. paziņo, ka modems un bezvadu aparatūra, kas minēta šajā sadaļā, atbilst Direktīvas 1999/5/EK pamatprasībām un citiem ar to saistītajiem noteikumiem.

Lithuaninan

Šiuo, „Lenovo (Singapore) Pte. Ltd.“, pareiškia, kad šiame skyriuje nurodytas modemas ir belaidė įranga atitinka svarbiausius 1999/5/EB direktyvos reikalavimus ir kitas susijusias nuostatas.

Norwegian

Lenovo (Singapore) Pte. Ltd. erklærer herved at det trådløse utstyret er i samsvar med de viktigste kravene og andre relevante bestemmelser i EU-direktiv 1999/5/EØF.

Polish

Lenovo (Singapore) Pte. Ltd. deklaruje niniejszym, że modem i urządzenia bezprzewodowe wymienione w tej sekcji są zgodne z zasadniczymi wymaganiami i postanowieniami dyrektywy 1999/5/EC.

Portuguese

Pelo presente, Lenovo (Singapore) Pte. Ltd., declara que o equipamento sem fios listado nesta secção está em conformidade com os requisitos essenciais e outras provisões relevantes da Directiva 1999/5/EC.

Romanian

Prin aceasta, Lenovo (Singapore) Pte. Ltd., declară că modemul și echipamentul wireless prezentate în această secțiune respectă cerințele esențiale și celelalte prevederi pertinente ale Directivei 1999/5/EC.

Slovakian

Týmto spoločnosť Lenovo (Singapore) Pte. Ltd. prehlasuje, že modem a bezdrôtové zariadenia uvedené v tejto časti sú v súlade s nevyhnutnými kritériami a inými príslušnými požiadavkami Smernice 1999/5/EC.

Slovenian

S tem Lenovo (Singapore) Pte. Ltd., izjavlja, da modem in brezžična oprema, opisana v tem razdelku, ustrezata bistvenim zahtevam in drugim določbam smernice 1999/5/EC.

Spanish

En este documento, Lenovo (Singapore) Pte. Ltd., declara que el equipo inalámbrico que aparecen en esta sección cumplen los requisitos esenciales y otras exigencias relevantes de la Directiva 1999/5/EC.

Swedish

Härmed intygar Lenovo (Singapore) Pte. Ltd att den trådlösa utrustning som anges i detta avsnitt överensstämmer med väsentliga krav och andra relevanta bestämmelser i direktiv 1999/5/EG.





Notice for users in Japan

以下の Lenovo®製品に関する情報が記載されています。

日本国内で無線 LAN アダプターをご使用になる場合の注意

本製品が装備する無線アダプターは、電波法および電気通信事業法により技術基準認証を下記のとおり取得しています。本製品に組み込まれた無線設備を他の機器で使用する場合は、当該機器が上記と同じく認証を受けていることをご確認ください。認証されていない機器での使用は、電波法の規定により認められていません。

表 1. 無線

認証申請者名	認証製品名	認証番号
LENOVO (BEIJING) LIMITED	MOBTJNL	  005-101159
LENOVO (BEIJING) LIMITED	DGRFG4	  005-101151

(2.4 GHz の場合)

この機器の使用周波数帯では、電子レンジ等の産業・科学・医療用機器のほか工場の製造ライン等で使用されている移動体識別用の構内無線局 (免許を要する無線局) および特定小電力無線局 (免許を要しない無線局) 並びにアマチュア無線局 (免許を要する無線局) が運用されています。

1. この機器を使用する前に、近くで移動体識別用の構内無線局及び特定小電力無線局並びにアマチュア無線局が運用されていないことを確認してください。
2. 万一、この機器から移動体識別用の構内無線局に対して電波干渉の事例が発生した場合には、速やかに使用周波数を変更するかまたは電波の発射を停止した上で、下記連絡先にご連絡頂き、混信回避のための処置等についてご相談ください。
3. その他、この機器からの移動体識別用の特定小電力無線局あるいはアマチュア無線局に対して有害な電波干渉の事例が発生した場合など何かお困りのことが起きたときには、次の連絡先にお問い合わせください。

連絡先: スマートセンター (スマートセンターのご利用方法は、次のホームページでご確認頂けます。 <http://www.lenovo.com/jp/lsmartctr>)

無線 LAN 製品ご使用時におけるセキュリティに関するご注意

無線 LAN では、LAN ケーブルを使用する代わりに、電波を利用してパソコン等と無線アクセスポイント間で情報のやり取りを行うため、電波の届く範囲であれば自由に LAN 接続が可能であるという利点があります。その反

面、電波はある範囲内であれば障害物 (壁等) を越えてすべての場所に届くため、セキュリティに関する設定を行っていない場合、以下のような問題が発生する可能性があります。

- 通信内容を盗み見られる 悪意ある第三者が、電波を故意に傍受し、
 - ID やパスワード又はクレジットカード番号等の個人情報
 - メールの内容等の通信内容を盗み見られる可能性があります。
- 不正に侵入される 悪意ある第三者が、無断で個人や会社内のネットワークへアクセスし、
 - 個人情報や機密情報を取り出す (情報漏洩)
 - 特定の人物になりすまして通信し、不正な情報を流す (なりすまし)
 - 傍受した通信内容を書き換えて発信する (改ざん)
 - コンピュータウイルスなどを流しデータやシステムを破壊する (破壊)などの行為をされてしまう可能性があります。

本来、無線 LAN カードや無線アクセスポイントは、これらの問題に対応するためのセキュリティの仕組みを持っていますので、無線 LAN 製品のセキュリティに関する設定を行って製品を使用することで、その問題が発生する可能性は少なくなります。

セキュリティの設定を行わないで使用した場合の問題を充分理解した上で、お客様自身の判断と責任においてセキュリティに関する設定を行い、製品を使用することをお奨めします。

使用環境および快適に使用するために

ワイヤレス LAN カードおよび *Bluetooth* デバイスは、ほかの無線装置のように無線周波数電磁波を発します。しかしながら、これらの無線装置が発する電磁波が人体へ与える影響は、頭部等へ直接接触して使用される携帯電話などの機器とは異なり、とても弱いレベルのものです。

ワイヤレス LAN カードおよび *Bluetooth* デバイスは、無線周波数に関する安全基準や勧告などのガイドラインに従って動作するもので、Lenovo® は、消費者が内蔵ワイヤレス・カードを使用しても安全であると考えます。これらの標準およ

び勧告は、科学者団体の合意や広範な研究文献を頻繁に検討、調査している科学者のパネルや委員会の審議の結果を反映しています。

状況や環境によって、建物の所有者や組織の代表責任者がワイヤレス LAN カードまたは *Bluetooth* デバイスの使用を制限することがあります。たとえば、次のような場合や場所です。

- 飛行機の搭乗中、病院内、あるいはガソリンスタンド、(電気式発火装置のある) 爆発の危険のある場所、医療用インプラント、またはペースメーカーなどの装着式医療用電子機器の近くで、内蔵ワイヤレス・カードを使用すること。
- 他の装置や機能に対して有害と認識または確認されている妨害を起こす危険性がある場合。

特定の場所で (たとえば空港や病院など) ワイヤレス・デバイスの使用が許可されているかどうか分からない場合は、ThinkPad の電源を入れる前に、ワイヤレス LAN カードまたは *Bluetooth* デバイスを使用してもよいかどうかをお尋ねください。

Notice for users in Thailand

For models: MOBTJNL and DGRFG4

เครื่องโทรคมนาคมและอุปกรณ์นี้ มีความสอดคล้องตามข้อกำหนดของ กทช./กสทช.

Trademarks

Lenovo, the Lenovo logo, and ThinkPad are trademarks of Lenovo in the United States, other countries, or both.

Other company, product, or service names may be trademarks or service marks of others.

First Edition (January 2016)

© Copyright Lenovo 2016.

LIMITED AND RESTRICTED RIGHTS NOTICE: If data or software is delivered pursuant a General Services Administration "GSA" contract, use, reproduction, or disclosure is subject to restrictions set forth in Contract No. GS-35F-05925.

Printed in China

(1P) P/N: SP40K80754

