



DCS-8525LH

**Full HD Pan & Tilt Wi-Fi
Camera**

User's Manual

Version 1.0

March 12th, 2018

Table of Contents

1. PRODUCT INTRODUCTION.....3

2. HARDWARE OVERVIEW.....3

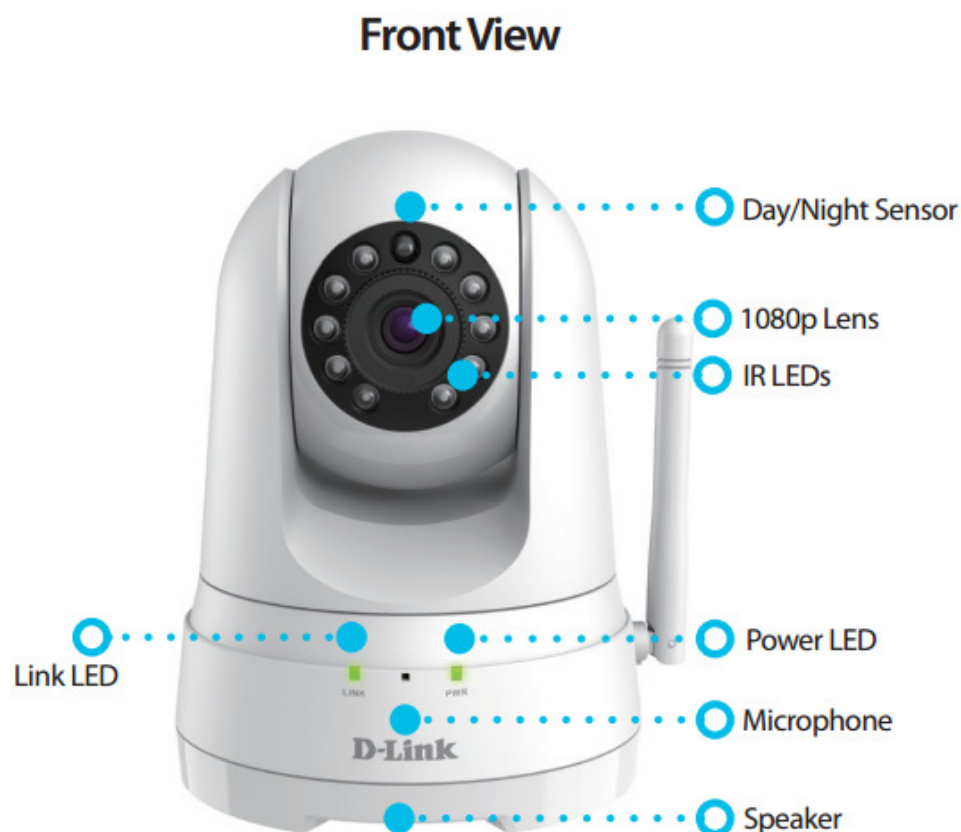
4. INSTALLATIONS.....5

1. PRODUCT INTRODUCTION

The DCS-8525 Full HD Pan & Tilt Wi-Fi Camera provides a range of features to help you effectively monitor large areas of your home or small office at all hours of the day. The pan/tilt function allows the camera to patrol a wide area, while the built-in IR LEDs provide around the clock surveillance in all lighting conditions. Extra details are captured in 1080p high-definition resolution and H.264 compression saves space without sacrificing performance. An integrated microSD card slot¹ allows you to record videos directly onto the camera, without the need of a computer. You can set up the camera to record only when motion or sound is detected.

Wireless connectivity means that there is no need for additional cabling and Micro-USB input lets you power the device using universal cables and power adapters, making setup quick and hassle-free.

2. HARDWARE OVERVIEW



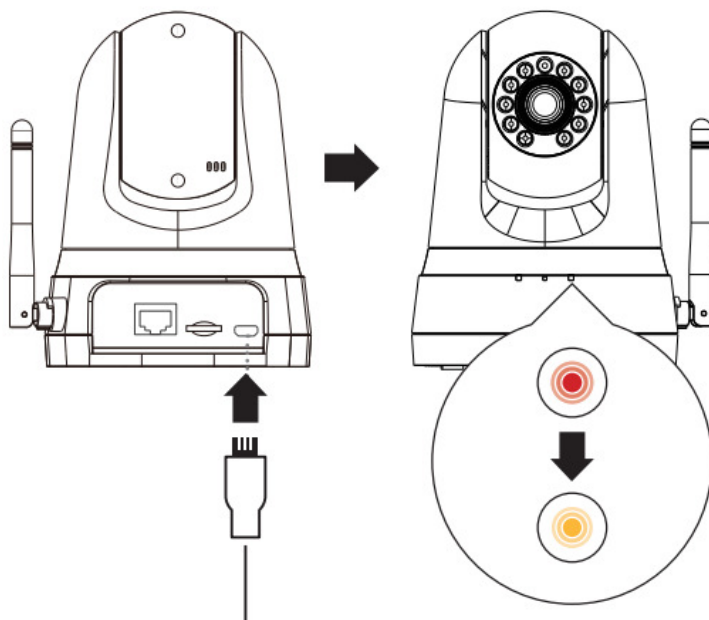
Back View



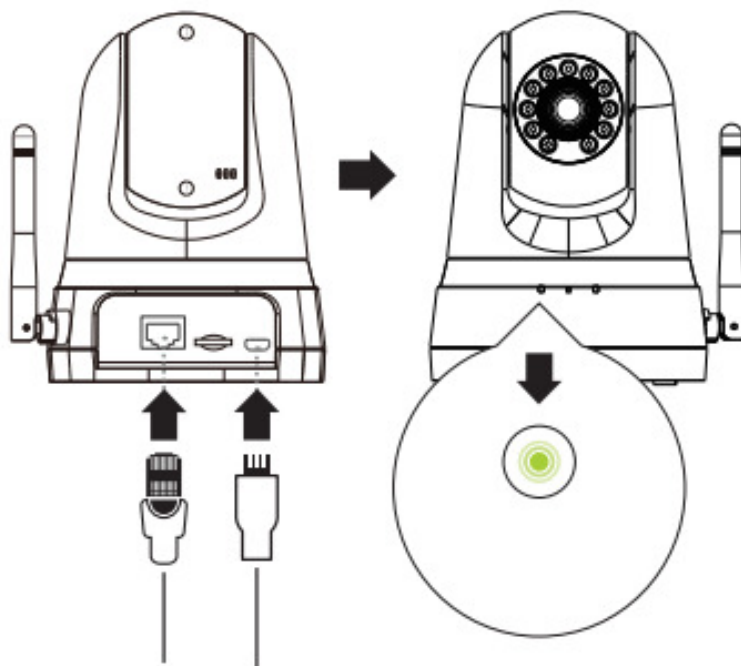
3. INSTALLATIONS

3-1

Wireless set-up: Plug the included USB Power Adapter into the back of the camera. Wait until the PWR LED changes from red to blinking orange.



Wired set-up: Plug the included USB Power Adapter and Ethernet cable into the back of the camera. Wait until the red PWR LED turns off and the green LINK LED turns on.

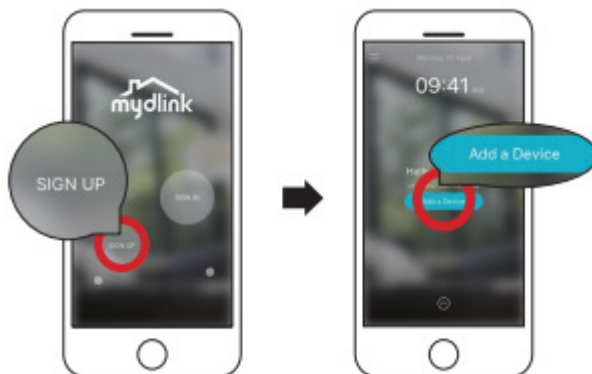


3-2

To download and install the mydlink app on your mobile device, scan the QR code above for your Android or iOS device.

**3-3**

New users: Tap Sign Up to register for a mydlink account, then tap Add a Device to install your camera.

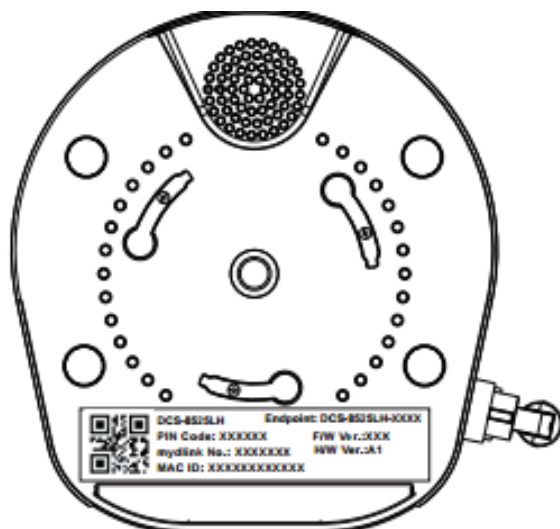


Existing users: Sign In using your mydlink account and tap the icon at the top left, then tap Add a Device to start the setup wizard.



3-4

When asked to scan the QR code, use the code found on the bottom of the camera.



Regulatory Statements

Federal Communication Commission Interference Statement

This device complies with Part 15 of the FCC Rules. Operation is subject to the following two conditions: (1) This device may not cause harmful interference, and (2) this device must accept any interference received, including interference that may cause undesired operation.

This equipment has been tested and found to comply with the limits for a Class B digital device, pursuant to Part 15 of the FCC Rules. These limits are designed to provide reasonable protection against harmful interference in a residential installation. This equipment generates, uses and can radiate radio frequency energy and, if not installed and used in accordance with the instructions, may cause harmful interference to radio communications. However, there is no guarantee that interference will not occur in a particular installation. If this equipment does cause harmful interference to radio or television reception, which can be determined by turning the equipment off and on, the user is encouraged to try to correct the interference by one of the following measures:

- Reorient or relocate the receiving antenna.
- Increase the separation between the equipment and receiver.
- Connect the equipment into an outlet on a circuit different from that to which the receiver is connected.
- Consult the dealer or an experienced radio/TV technician for help.

FCC Caution:

- Any changes or modifications not expressly approved by the party responsible for compliance could void the user's authority to operate this equipment.
- This transmitter must not be co-located or operating in conjunction with any other antenna or transmitter.

Radiation Exposure Statement:

This equipment complies with FCC radiation exposure limits set forth for an uncontrolled environment. This equipment should be installed and operated with minimum distance 20cm between the radiator & your body.

Note: The country code selection is for non-US model only and is not available to all US model. Per FCC regulation, all WiFi product marketed in US must fixed to US operation channels only.

Industry Canada statement:

This device complies with ISED's licence-exempt RSSs. Operation is subject to the following two conditions: (1) This device may not cause harmful interference, and (2) this device must accept any interference received, including interference that may cause undesired operation.

Le présent appareil est conforme aux CNR d'ISED applicables aux appareils radio exempts de licence. L'exploitation est autorisée aux deux conditions suivantes : (1) le dispositif ne doit pas produire de brouillage préjudiciable, et (2) ce dispositif doit accepter tout brouillage reçu, y compris un brouillage susceptible de provoquer un fonctionnement indésirable.

Radiation Exposure Statement:

This equipment complies with ISED radiation exposure limits set forth for an uncontrolled environment. This equipment should be installed and operated with minimum distance 20cm between the radiator & your body.

Déclaration d'exposition aux radiations:

Cet équipement est conforme aux limites d'exposition aux rayonnements ISED établies pour un environnement non contrôlé. Cet équipement doit être installé et utilisé avec un minimum de 20 cm de distance entre la source de rayonnement et votre corps.

低功率電波輻射性電機管理辦法

第十二條 經型式認證合格之低功率射頻電機，非經許可，公司、商號或使用者均不得擅自變更頻率、加大功率或變更原設計之特性及功能。

第十四條 低功率射頻電機之使用不得影響飛航安全及干擾合法通信；經發現有干擾現象時，應立即停用，並改善至無干擾時方得繼續使用。前項合法通信，指依電信法規定作業之無線電通信。低功率射頻電機須忍受合法通信或工業、科學及醫療用電波輻射性電機設備之干擾。

CE(LVD)警語更新：



IMPORTANT : " This unit to be used with the power supply provided by manufacturer " or equivalent.