

EXHIBIT 9

Internal Photographs

(Pursuant to FCC Part 2.1033(b)(7), 2.1033(c)(12) and RSP 100 Annex C)

The following photographs are attached.

Exhibit

- | | | |
|----|--|----|
| 1. | RF board <u>with</u> Shields (Top) | 9A |
| 2. | RF board <u>without</u> Shields (Top) | 9B |
| 3. | RF board (Bottom) | 9C |
| 4. | RF boards <u>with</u> chassis and housing for (Front Side) | 9D |
| 5. | Chassis and housing (Back Side) | 9E |



RMU2080d



RMU2040 / RMU2043

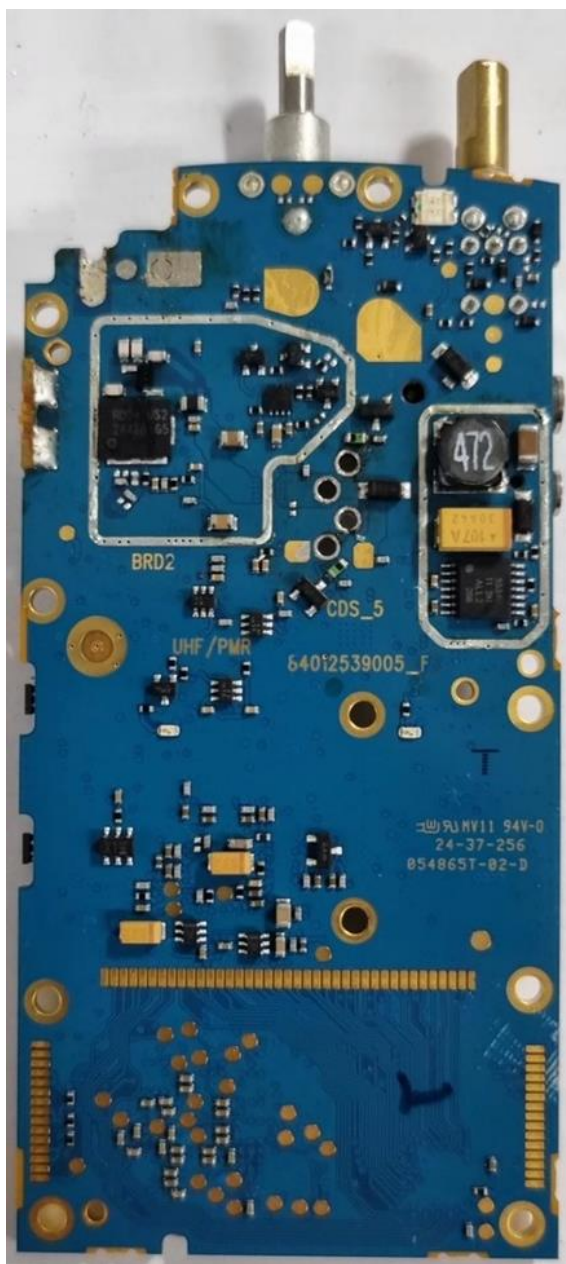
Exhibit 9A RF board with Shields (Top)



RMU2080

**** RMU2080 Radio is not in production. The photo will be taken when the radio is in production. Similar to RMU2080d except the circled components is not placed.**

Exhibit 9A RF board with Shields (Top)

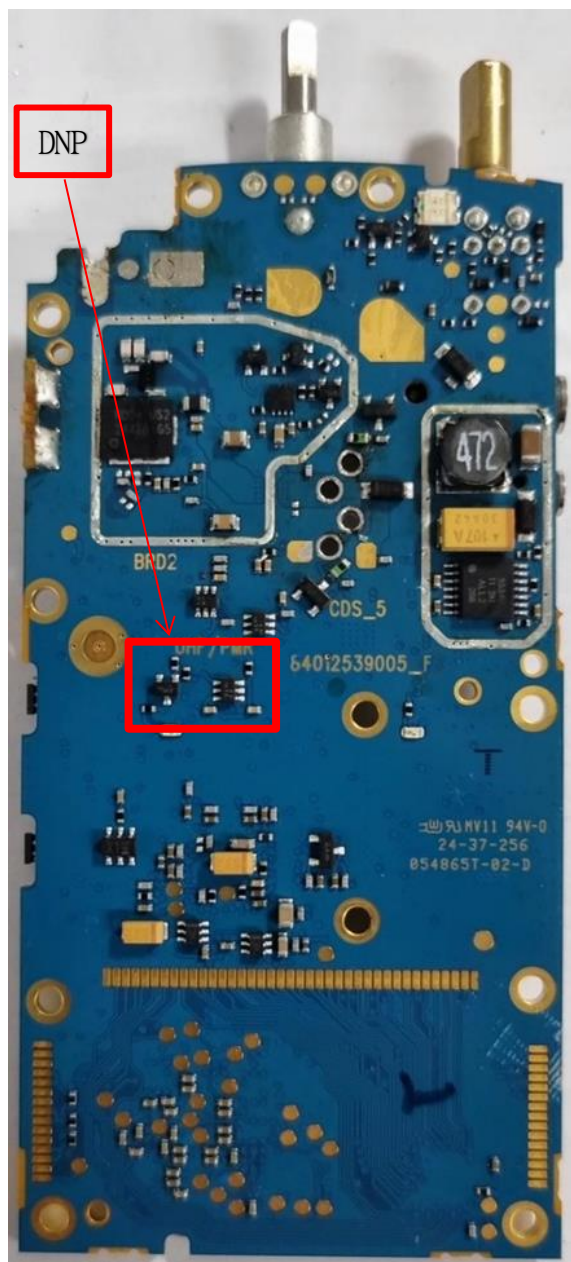


RMU2080d



RMU2040 / RMU2043

Exhibit 9B RF board without Shields (Top)



RMU2080

**** RMU2080 Radio is not in production. The photo will be taken when the radio is in production. Similar to RMU2080d except the circled components is not placed.**

Exhibit 9B RF board without Shields (Top)



RMU2080 / RMU2080d



RMU2040 / RMU2043

Exhibit 9C RF board (Bottom)



RMU2080 / RMU2080d



RMU2040 / RMU2043

Exhibit 9D RF boards with chassis and housing for (Front Side)



RMU2080 / RMU2080d



RMU2040 / RMU2043

Exhibit 9E Chassis and housing (Back Side)

***** END *****