

System Validation - D1800V2 S/N: 294

(Antenna input power: 250 mW)

SAM-1; Flat

Probe: ET3DV6 - SN1578; ConvF(5.50,5.50,5.50); Crest factor: 1.0

Head 1800 MHz: $\sigma = 1.42$ mho/m $\epsilon_r = 38.7$ $\rho = 1.00$ g/cm³

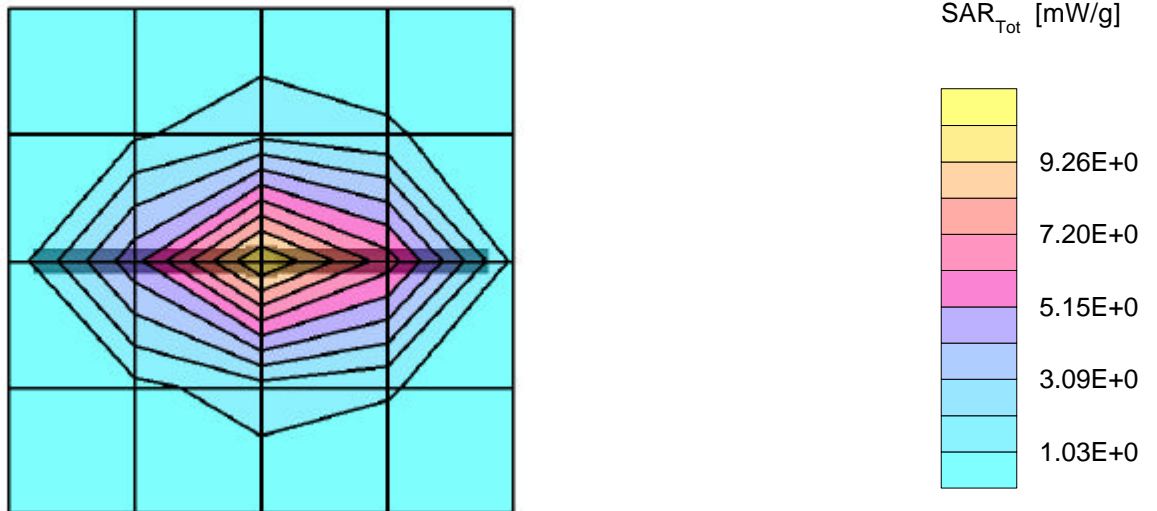
Cube 5x5x7: Peak: 17.7 mW/g, SAR (1g): 9.47 mW/g, SAR (10g): 4.92 mW/g, (Worst-case extrapolation)

Penetration depth: 8.2 (7.8, 9.0) [mm]

Powerdrift: 0.01 dB

Ambient Temperature (degree C): 22.0

Liquid Temperature (degree C): 20.0



System Validation - D1800V2 S/N: 294

(Antenna input power: 250 mW)

SAM-1;

Probe: ET3DV6 - SN1578; ConvF(5.50,5.50,5.50); Crest factor: 1.0

Head 1800 MHz: $\sigma = 1.42 \text{ mho/m}$ $\epsilon_r = 38.7$ $\rho = 1.00 \text{ g/cm}^3$

: , , ()

Penetration depth: 8.2 (7.8, 9.1) [mm]

Ambient Temperature (degree C): 22.0

Liquid Temperature (degree C): 20.0

