

1. Antenna Description:

Antenna type	PIFA antenna
Model	XZX-W6-WIFI
Frequency range	2400-2500MHz, 5180-5240MHz
Manufacturer	XZX Video Technology shenzhen Co., LTD
Address	3rd Floor, Building A, Henghai Industrial Zone, No. 16, Guangming Avenue, Fenghuang Street, Guangming District, Shenzhen, China
ANT Peak Gain	2400-2500MHz: 2.00 dBi 5180-5240MHz: 1.75 dBi

2. Antenna Photo:

Length: 22.47mm
Width: 7.83mm



3. Test Equipment & Conditions

3.1 Test instrument

VSWR is tested using Agilent E5071B connected to a hand mechanism, and the status is free space.

3.2 Test environment and methods

Dark room specifications: ETS-743

TD-SCDMA test equipment: StarPoint SP6010/Agilent 8960

LTE-TDD/FDD-SCDMA test equipment: StarPoint SP8011/CMW500

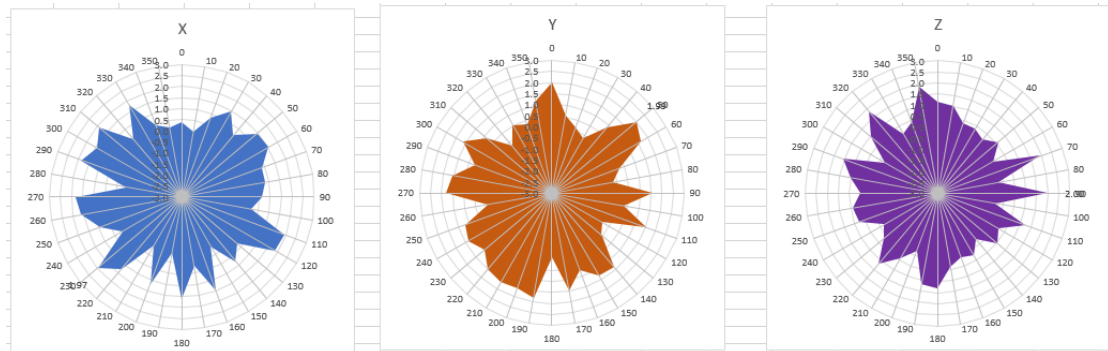
WCDMA/GSM/CDMA test equipment: Agilent 8960

Passive efficiency testing equipment: Agilent Technologies E5071B

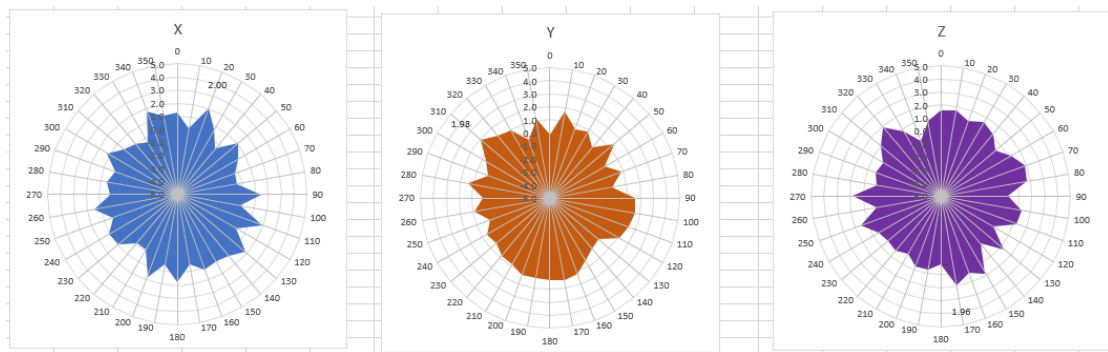


4 . Antenna Radiation Pattern

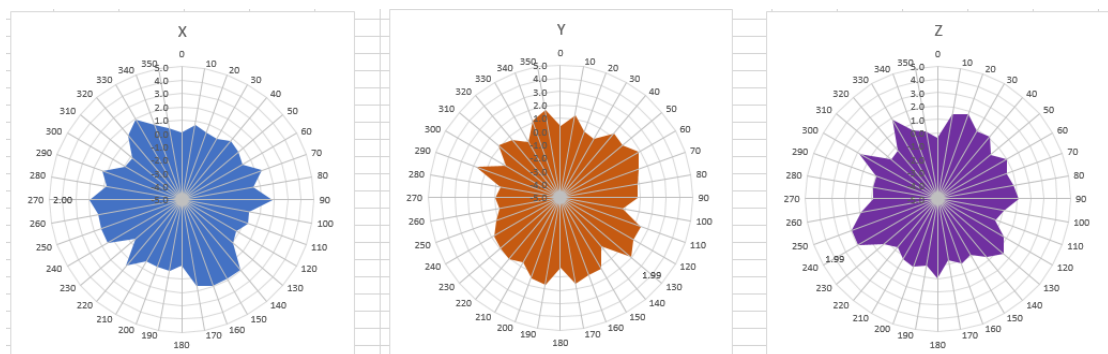
2400MHz



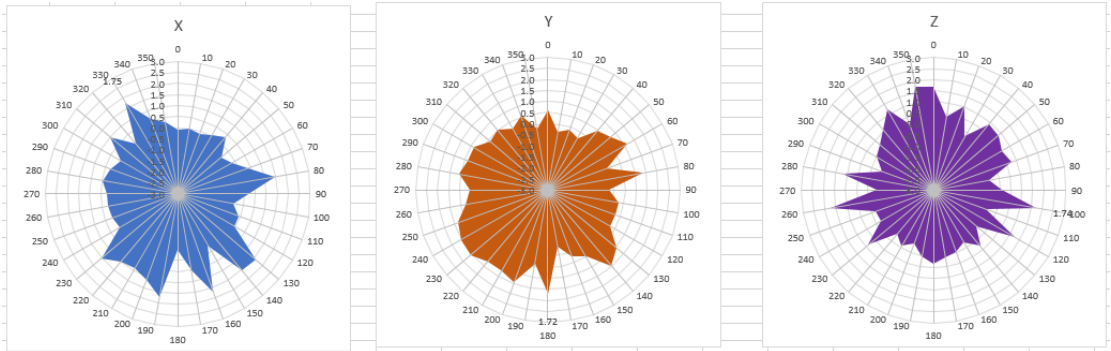
2450MHz



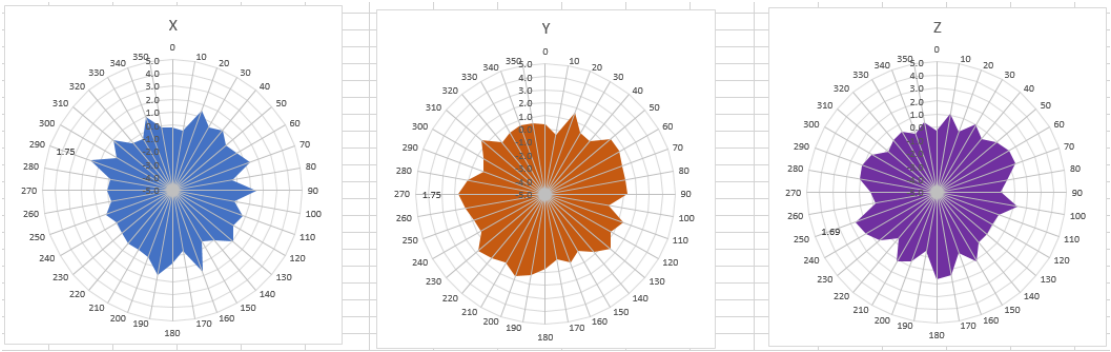
2500MHz



5180MHz



5220MHz



5240MHz

