

DASY

Dipole Validation Kit

Type: D1800V2

Serial: 269

Manufactured: August 21, 2000

Calibrated: July 16, 2003

1. Measurement Conditions

The measurements were performed in the flat section of the SAM twin phantom filled with **head simulating solution** of the following electrical parameters at 1800 MHz:

Relative Dielectricity	40.6	$\pm 5\%$
Conductivity	1.36 mho/m	$\pm 5\%$

The DASY4 System with a dosimetric E-field probe ET3DV6 (SN:1507, Conversion factor 5.3 at 1800 MHz) was used for the measurements.

The dipole was mounted on the small tripod so that the dipole feedpoint was positioned below the center marking of the flat phantom section and the dipole was oriented parallel to the body axis (the long side of the phantom). The standard measuring distance was 10mm from dipole center to the solution surface. The included distance spacer was used during measurements for accurate distance positioning.

The coarse grid with a grid spacing of 15mm was aligned with the dipole. The 7x7x7 fine cube was chosen for cube integration.

The dipole input power (forward power) was $250 \text{ mW} \pm 3 \%$. The results are normalized to 1W input power.

2. SAR Measurement with DASY4 System

Standard SAR-measurements were performed according to the measurement conditions described in section 1. The results (see figure supplied) have been normalized to a dipole input power of 1W (forward power). The resulting averaged SAR-values measured with the dosimetric probe ET3DV6 SN:1507 and applying the advanced extrapolation are:

averaged over 1 cm^3 (1 g) of tissue:	38.1 mW/g $\pm 16.8 \%$ (k=2)¹
averaged over 10 cm^3 (10 g) of tissue:	20.5 mW/g $\pm 16.2 \%$ (k=2)¹

¹ validation uncertainty

3. Dipole Impedance and Return Loss

The impedance was measured at the SMA-connector with a network analyzer and numerically transformed to the dipole feedpoint. The transformation parameters from the SMA-connector to the dipole feedpoint are:

Electrical delay:	1.187 ns	(one direction)
Transmission factor:	0.995	(voltage transmission, one direction)

The dipole was positioned at the flat phantom sections according to section 1 and the distance spacer was in place during impedance measurements.

Feedpoint impedance at 1800 MHz: $\text{Re}\{Z\} = 45.9 \Omega$

$\text{Im}\{Z\} = -8.3 \Omega$

Return Loss at 1800 MHz **-20.4 dB**

4. Measurement Conditions

The measurements were performed in the flat section of the SAM twin phantom filled with **body simulating solution** of the following electrical parameters at 1800 MHz:

Relative Dielectricity	51.2	$\pm 5\%$
Conductivity	1.49 mho/m	$\pm 5\%$

The DASY4 System with a dosimetric E-field probe ET3DV6 (SN:1507, Conversion factor 5.0 at 1800 MHz) was used for the measurements.

The dipole was mounted on the small tripod so that the dipole feedpoint was positioned below the center marking of the flat phantom section and the dipole was oriented parallel to the body axis (the long side of the phantom). The standard measuring distance was 10mm from dipole center to the solution surface. The included distance spacer was used during measurements for accurate distance positioning.

The coarse grid with a grid spacing of 15mm was aligned with the dipole. The 7x7x7 fine cube was chosen for cube integration.

The dipole input power (forward power) was $250 \text{ mW} \pm 3 \%$. The results are normalized to 1W input power.

5. SAR Measurement with DASY4 System

Standard SAR-measurements were performed according to the measurement conditions described in section 4. The results (see figure supplied) have been normalized to a dipole input power of 1W (forward power). The resulting averaged SAR-values measured with the dosimetric probe ET3DV6 SN:1507 and applying the advanced extrapolation are:

averaged over 1 cm³ (1 g) of tissue: **40.4 mW/g ± 16.8 % (k=2)²**

averaged over 10 cm³ (10 g) of tissue: **21.7 mW/g ± 16.2 % (k=2)²**

6. Dipole Impedance and Return Loss

The dipole was positioned at the flat phantom sections according to section 4 and the distance spacer was in place during impedance measurements.

Feedpoint impedance at 1800 MHz: **Re{Z} = 44.2 Ω**

Im {Z} = -8.9 Ω

Return Loss at 1800 MHz **-19.0 dB**

7. Handling

Do not apply excessive force to the dipole arms, because they might bend. Bending of the dipole arms stresses the soldered connections near the feedpoint leading to a damage of the dipole.

8. Design

The dipole is made of standard semirigid coaxial cable. The center conductor of the feeding line is directly connected to the second arm of the dipole. The antenna is therefore short-circuited for DC-signals.

9. Power Test

After long term use with 40W radiated power, only a slight warming of the dipole near the feedpoint can be measured.

² validation uncertainty

Date/Time: 07/16/03 14:07:56

Test Laboratory: SPEAG, Zurich, Switzerland

File Name: SN269_SN1507_HSL1800_160703.da4

DUT: Dipole 1800 MHz; Type: D1800V2; Serial: D1800V2 - SN269
Program: Dipole Calibration

Communication System: CW-1800; Frequency: 1800 MHz; Duty Cycle: 1:1

Medium: HSL 1800 MHz ($\sigma = 1.36$ mho/m, $\epsilon_r = 40.59$, $\rho = 1000$ kg/m³)

Phantom section: Flat Section

Measurement Standard: DASY4 (High Precision Assessment)

DASY4 Configuration:

- Probe: ET3DV6 - SN1507; ConvF(5.3, 5.3, 5.3); Calibrated: 1/18/2003
- Sensor-Surface: 4mm (Mechanical Surface Detection)
- Electronics: DAE3 - SN411; Calibrated: 1/16/2003
- Phantom: SAM with CRP - TP1006; Type: SAM 4.0; Serial: TP:1006
- Measurement SW: DASY4, V4.1 Build 47; Postprocessing SW: SEMCAD, V1.6 Build 115

Pin = 250 mW; d = 10 mm/Area Scan (81x81x1): Measurement grid: dx=15mm, dy=15mm

Reference Value = 92 V/m

Power Drift = 0.02 dB

Maximum value of SAR = 10.7 mW/g

Pin = 250 mW; d = 10 mm/Zoom Scan (7x7x7)/Cube 0: Measurement grid: dx=5mm, dy=5mm, dz=5mm

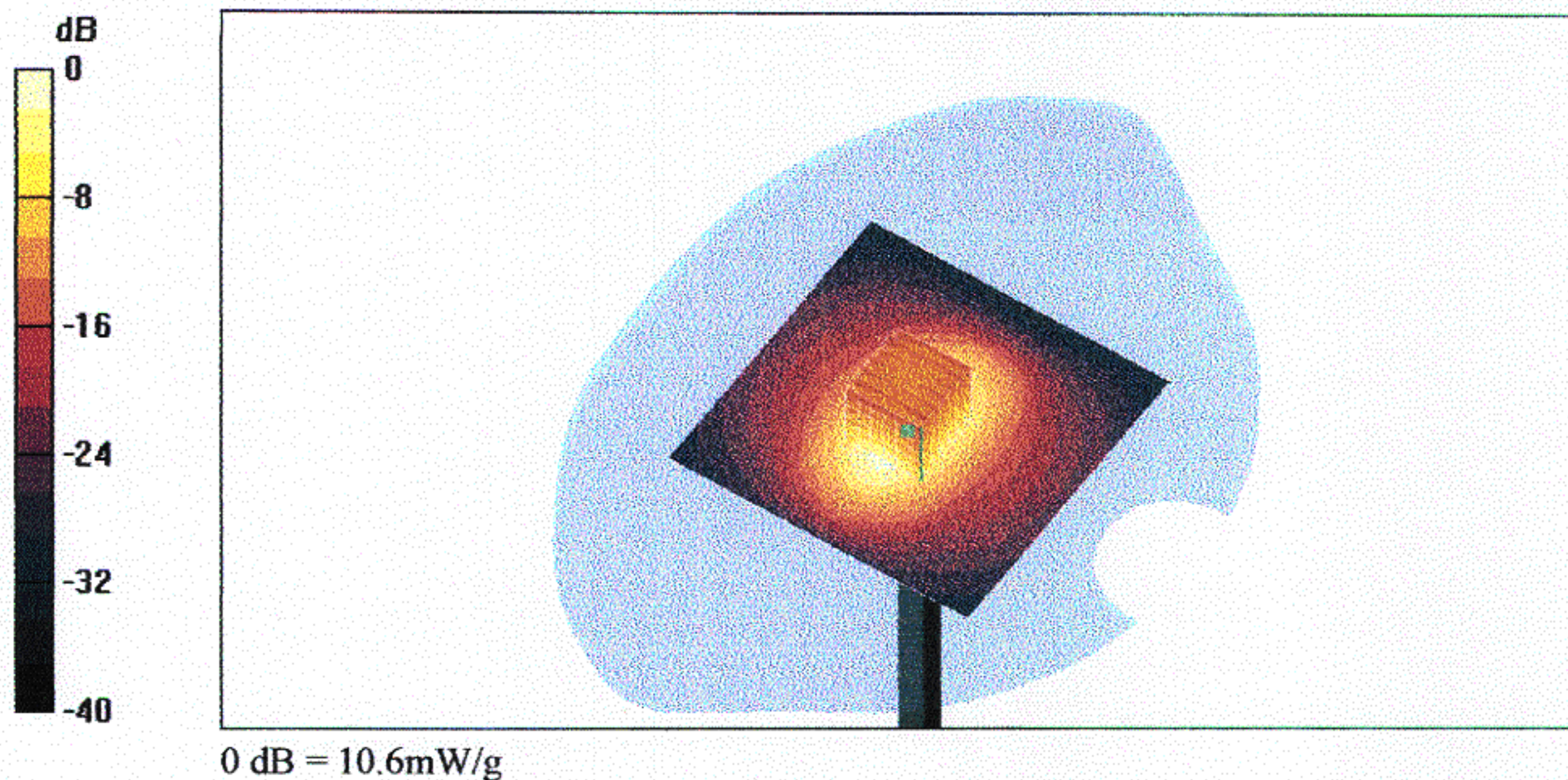
Peak SAR (extrapolated) = 15.8 W/kg

SAR(1 g) = 9.53 mW/g; SAR(10 g) = 5.13 mW/g

Reference Value = 92 V/m

Power Drift = 0.02 dB

Maximum value of SAR = 10.6 mW/g



16 Jul 2003 12:05:39

CH1 S11 985.7 mV FS 1: 45.906 Ω -8.2598 Ω 10.705 pF 1 800.000 000 MHz

↑

De1

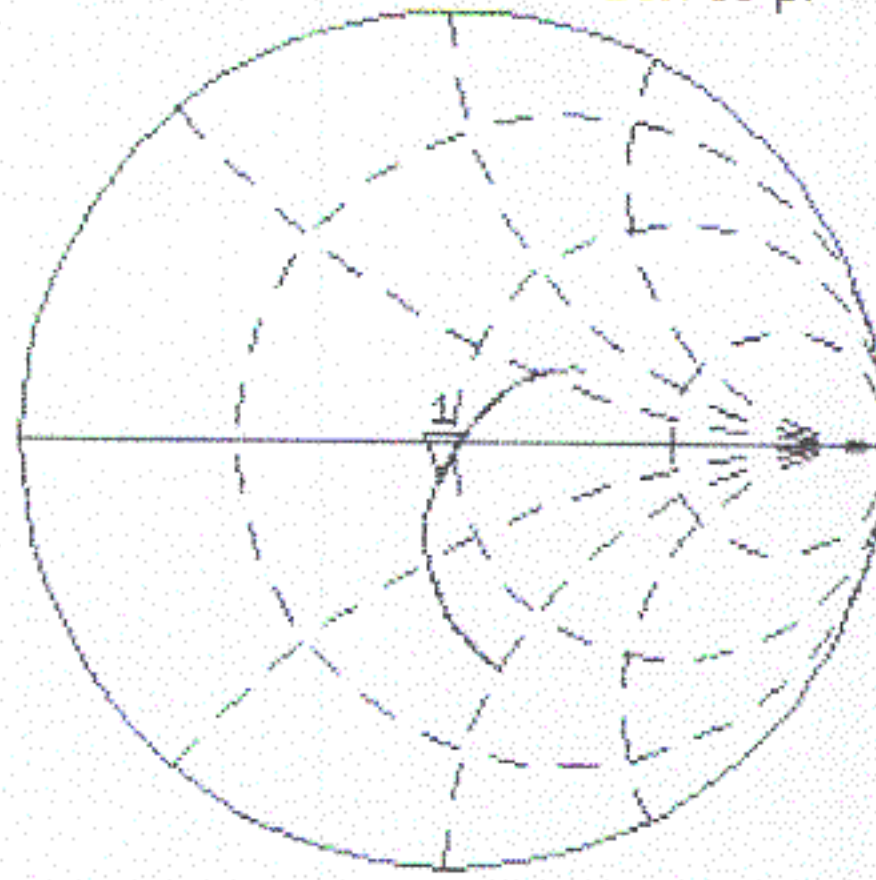
PRm

Cor

Avg

16

↑

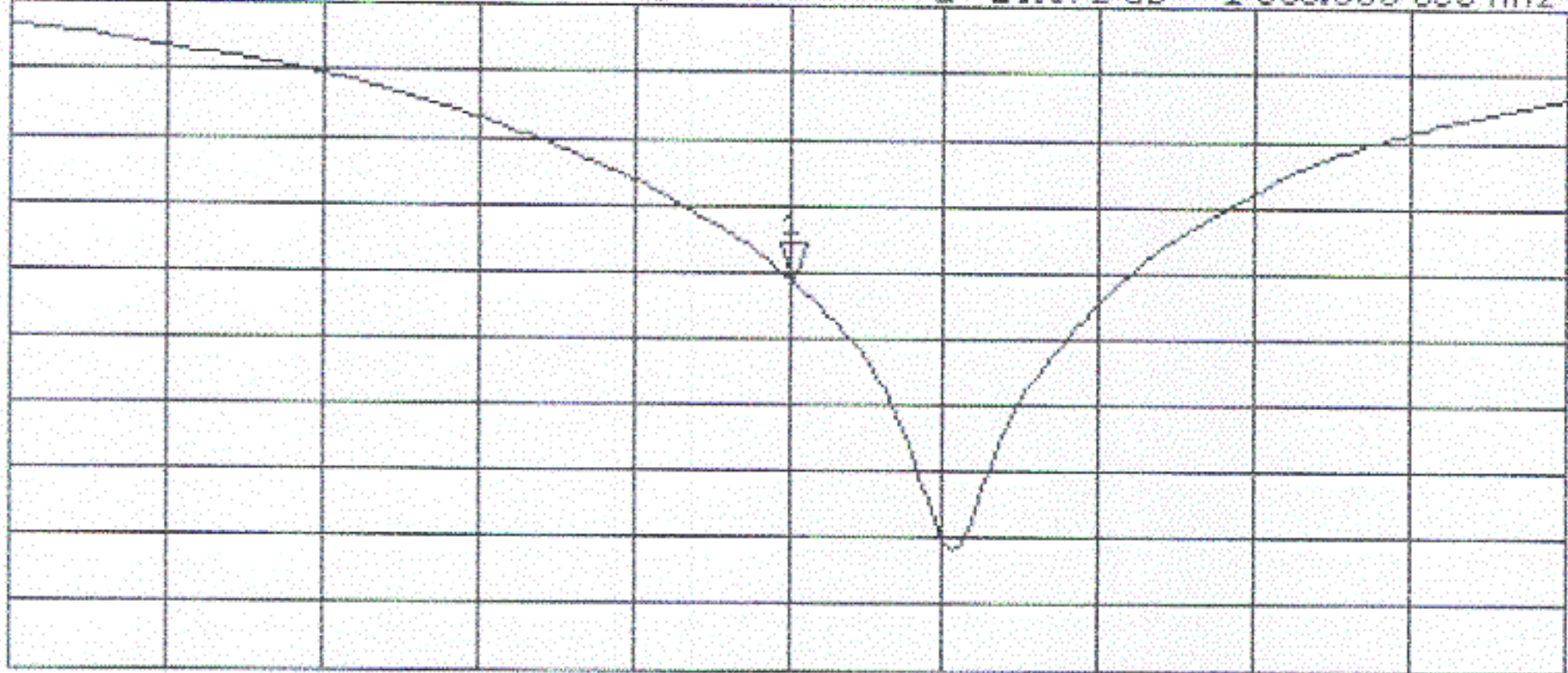


CH2 S11 LOG 4 dB/REF -20 dB 1: -20.372 dB 1 800.000 000 MHz

PRm

Cor

↑



CENTER 1 800.000 000 MHz

SPAN 400.000 000 MHz

Date/Time: 07/16/03 09:26:49

Test Laboratory: SPEAG, Zurich, Switzerland

File Name: SN269 SN1507 M1800 160703da4.da4**DUT: Dipole 1800 MHz; Type: D1800V2; Serial: D1800V2 - SN269****Program: Dipole Calibration**

Communication System: CW-1800; Frequency: 1800 MHz; Duty Cycle: 1:1

Medium: Muscle 1800 MHz ($\sigma = 1.49$ mho/m, $\epsilon_r = 51.24$, $\rho = 1000$ kg/m³)

Phantom section: Flat Section

Measurement Standard: DASY4 (High Precision Assessment)

DASY4 Configuration:

- Probe: ET3DV6 - SN1507; ConvF(5, 5, 5); Calibrated: 1/18/2003
- Sensor-Surface: 4mm (Mechanical Surface Detection)
- Electronics: DAE3 - SN411; Calibrated: 1/16/2003
- Phantom: SAM with CRP - TP1006; Type: SAM 4.0; Serial: TP:1006
- Measurement SW: DASY4, V4.1 Build 47; Postprocessing SW: SEMCAD, V1.6 Build 115

Pin = 250 mW; d = 10 mm/Area Scan (81x81x1): Measurement grid: dx=15mm, dy=15mm

Reference Value = 93.3 V/m

Power Drift = -0.002 dB

Maximum value of SAR = 11.3 mW/g

Pin = 250 mW; d = 10 mm/Zoom Scan (7x7x7)/Cube 0: Measurement grid: dx=5mm, dy=5mm, dz=5mm

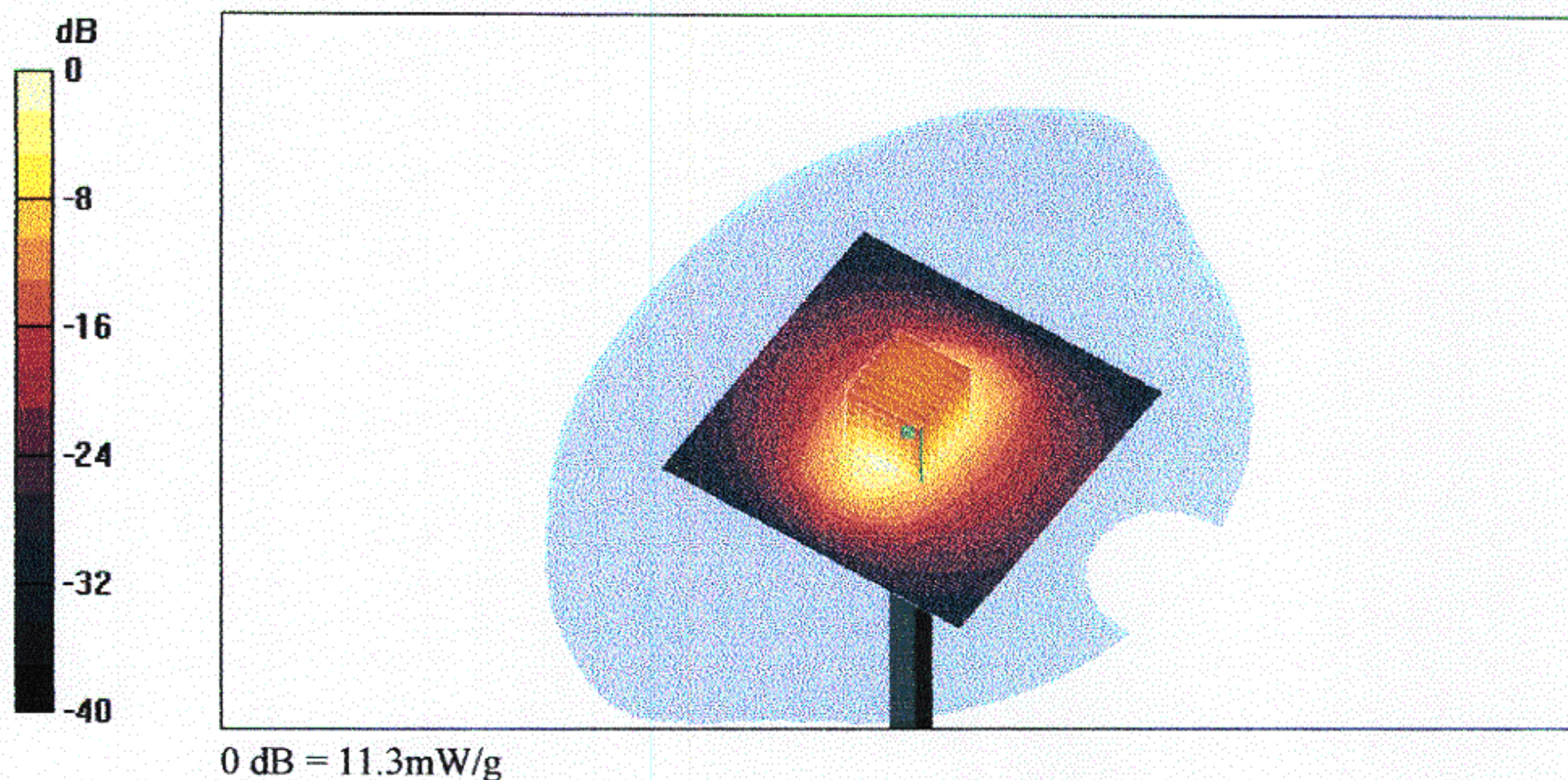
Peak SAR (extrapolated) = 16.5 W/kg

SAR(1 g) = 10.1 mW/g; SAR(10 g) = 5.43 mW/g

Reference Value = 93.3 V/m

Power Drift = -0.002 dB

Maximum value of SAR = 11.3 mW/g



269
Body

16 Jul 2003 07:44:42
CH1 S11 1 U FS 1: 44.227 Ω -8.9199 Ω 9.9126 pF 1 800.000 000 MHz

De1

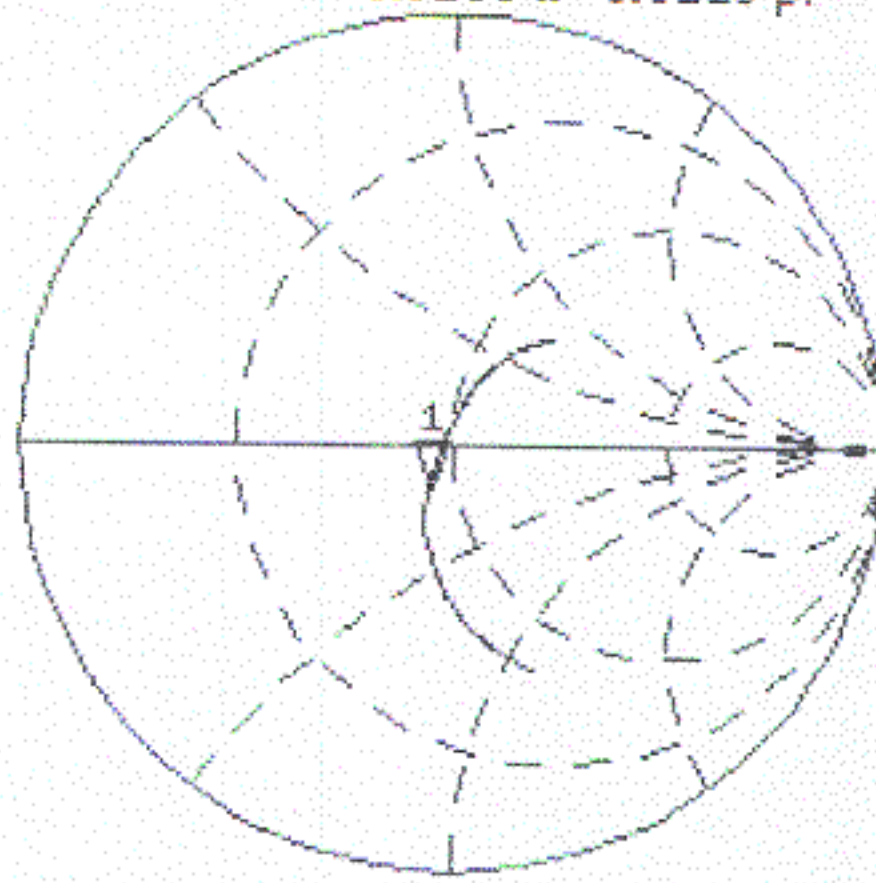
PRm

CA

Avg

16

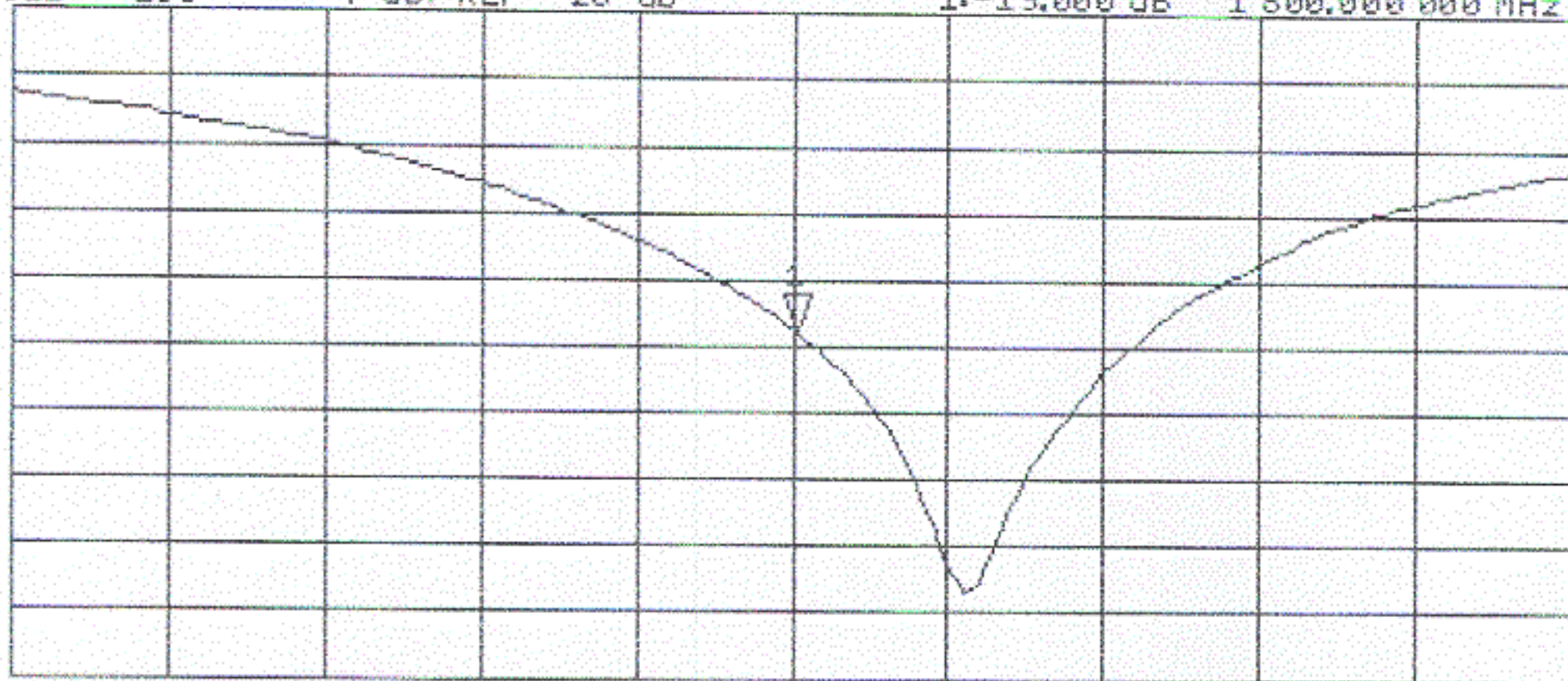
↑



CH2 S11 LOG 4 dB/REF -20 dB 1: -19.000 dB 1 800.000 000 MHz

PRm
CA

↑



CENTER 1 800.000 000 MHz

SPAN 400.000 000 MHz