

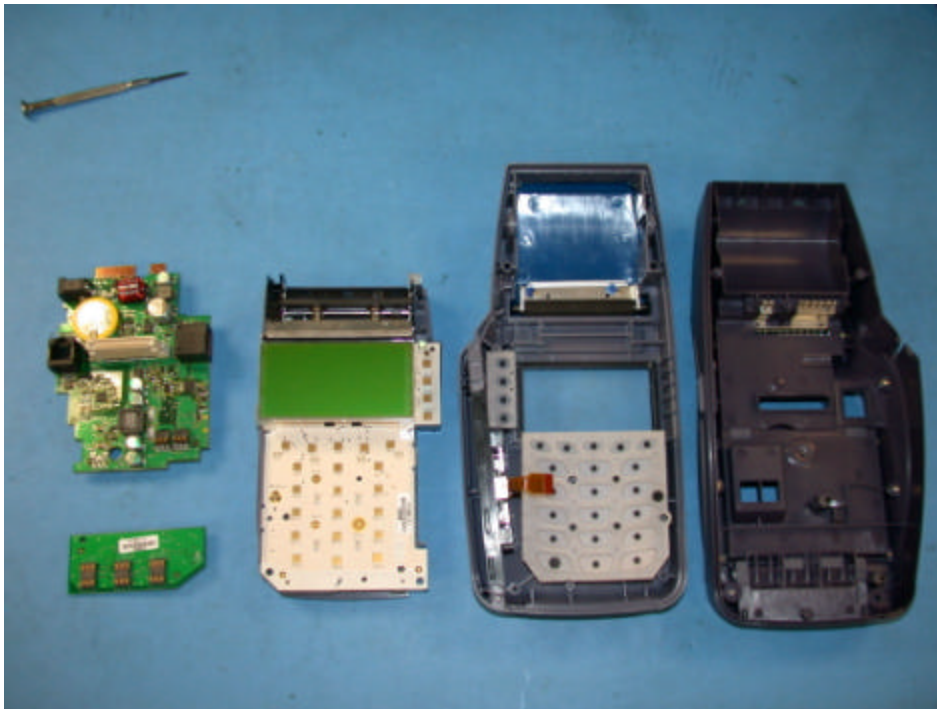
EUT Cover Off View



EUT Component View



EUT Solder View



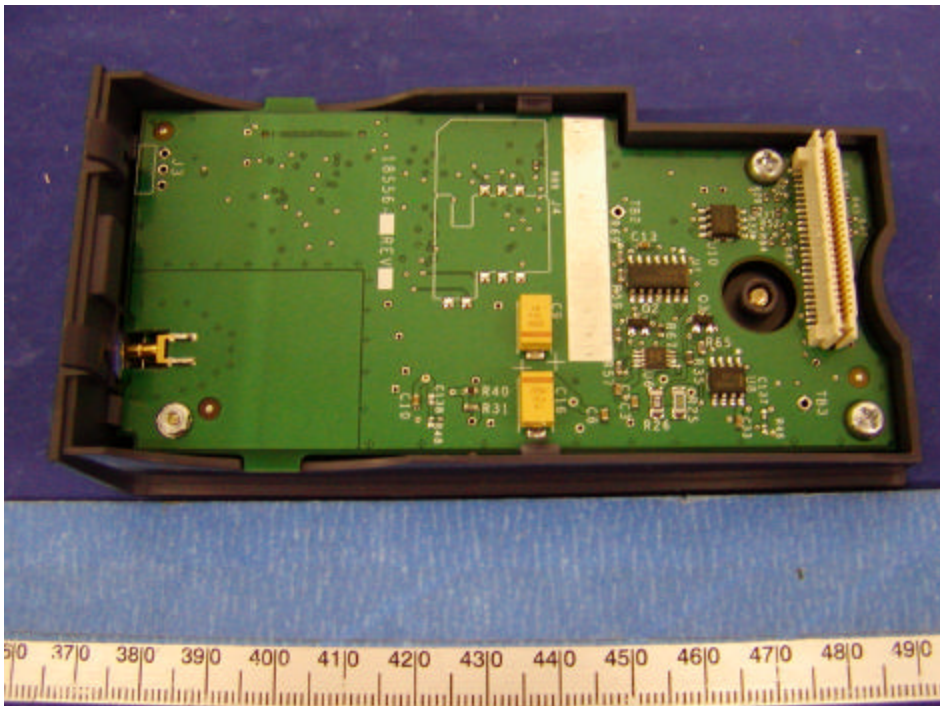
Battery View



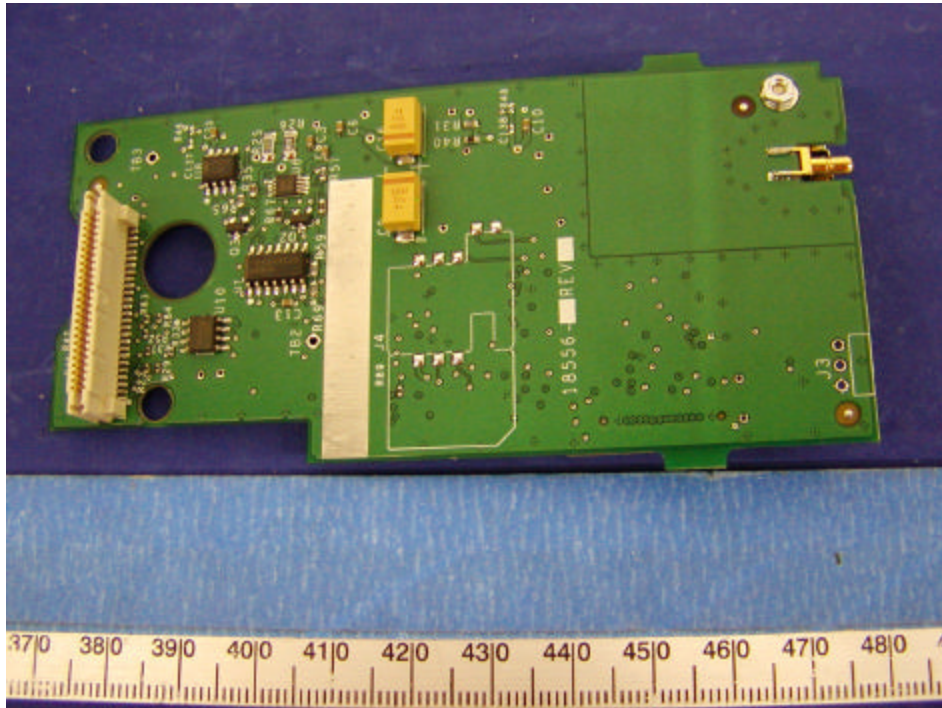
Antenna 1 View



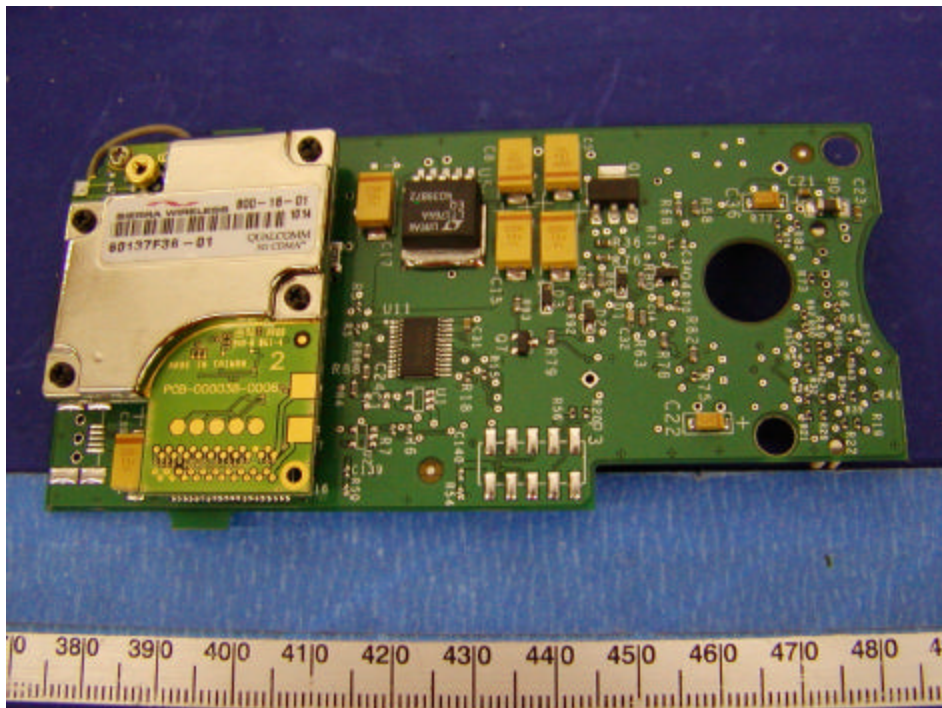
Interface Board View (For Antenna 1 Connector)



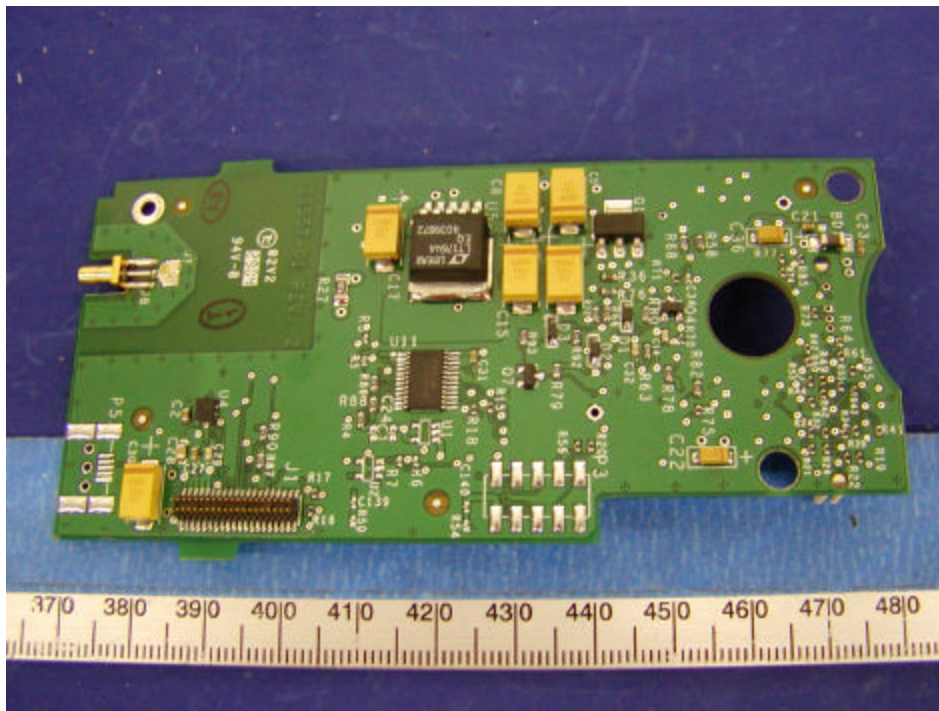
Interface Board Solder View (For Antenna 1 Connector)



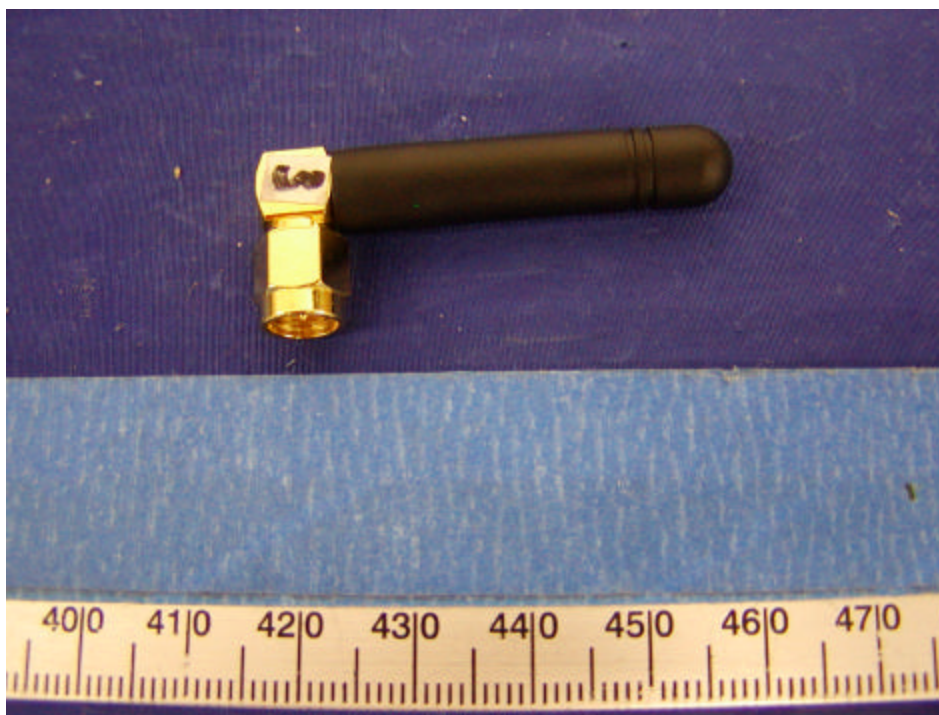
Interface Board with CDMA Module Component (For Antenna 1 Connector)



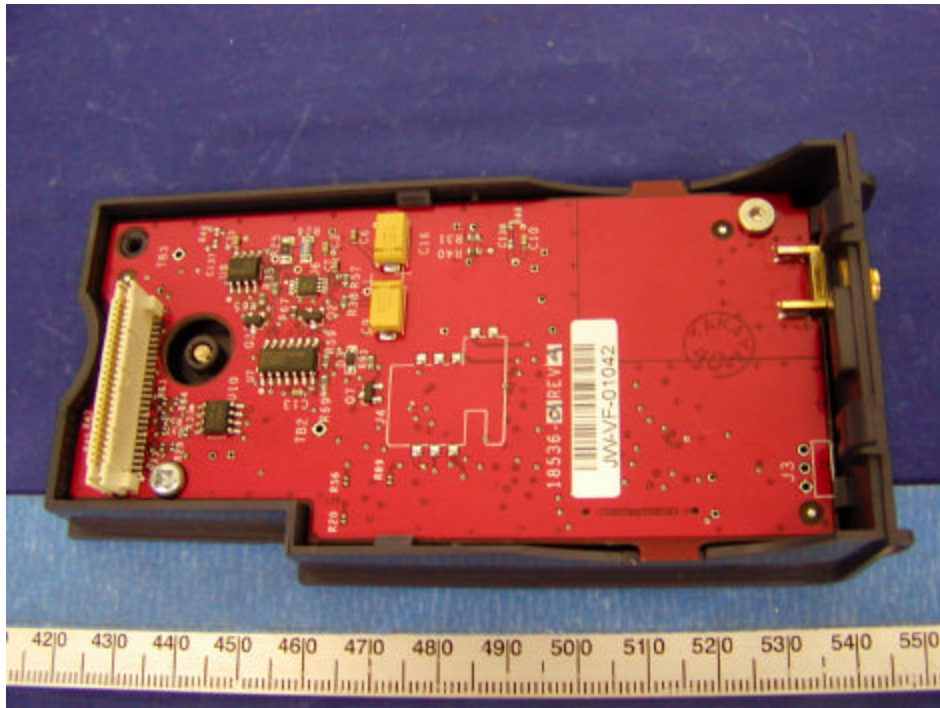
Interface Board without CDMA Module Component (For Antenna 1 Connector)



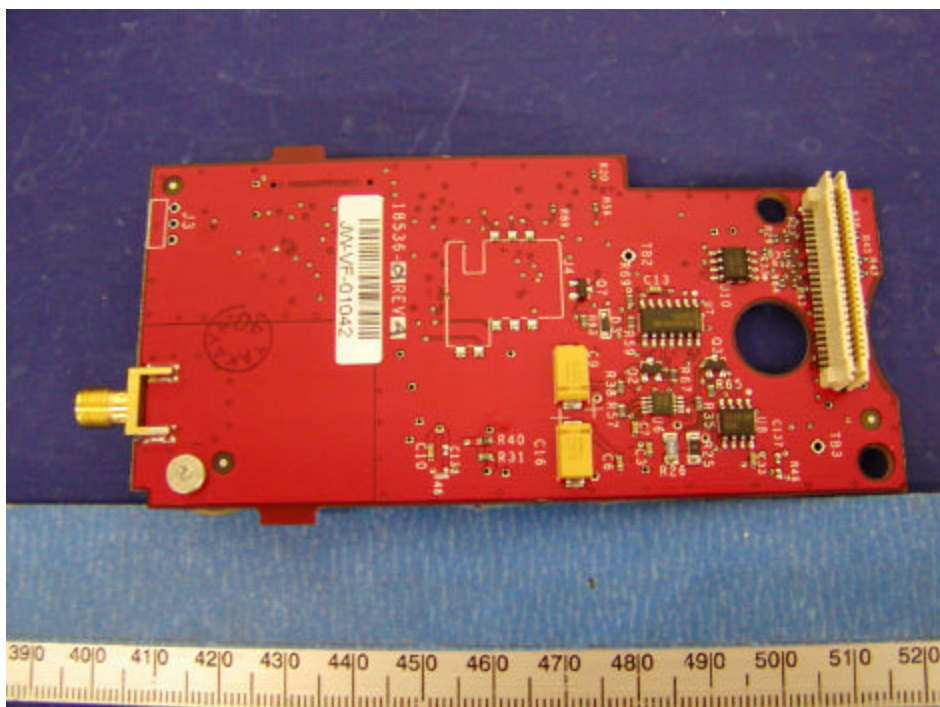
Antenna 2 View



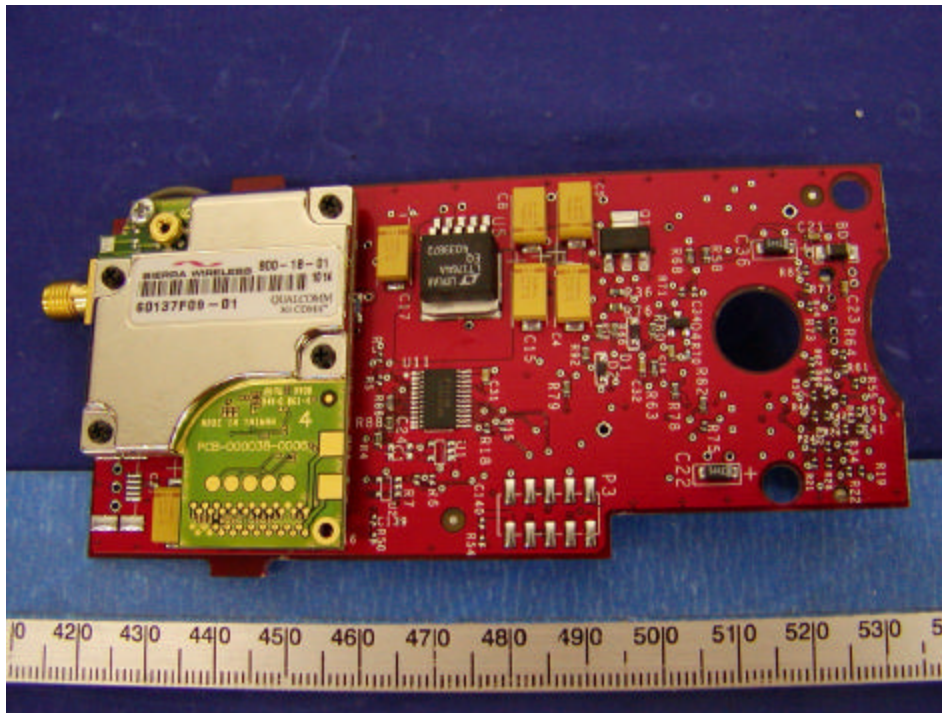
Interface Board View (For Antenna 2 Connector)



Interface Board Solder View (For Antenna 2 Connector)



Interface Board with CDMA Module Component (For Antenna 2 Connector)



Interface Board without CDMA Module Component (For Antenna 2 Connector)

