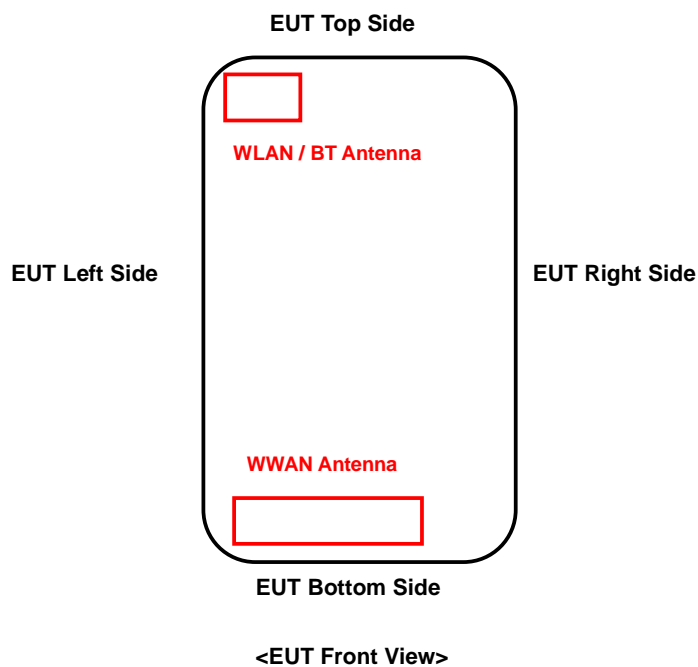


FCC SAR Test Report

<Photographs of EUT>



<Antenna Location>



The separation distance for antenna to edge:

Antenna	overall diagonal	overall diagonal	To Left Side (mm)	To Right Side (mm)	To Top Side (mm)	To Bottom Side (mm)
WWAN	148	130	7	26	132	5
WLAN / BT			5	55	5	125

FCC SAR Test Report

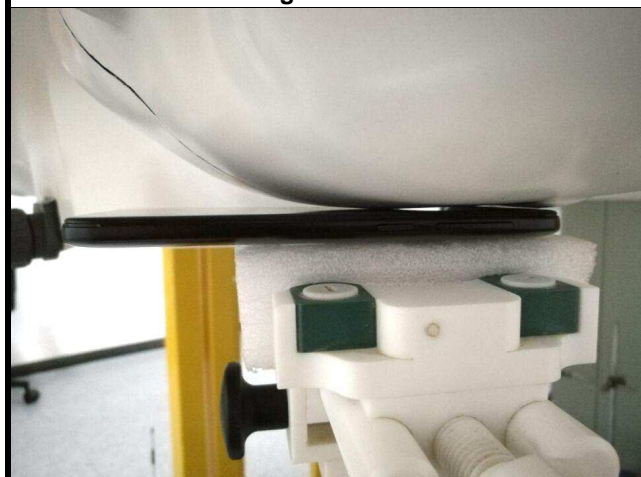
<Photographs of SAR Setup>



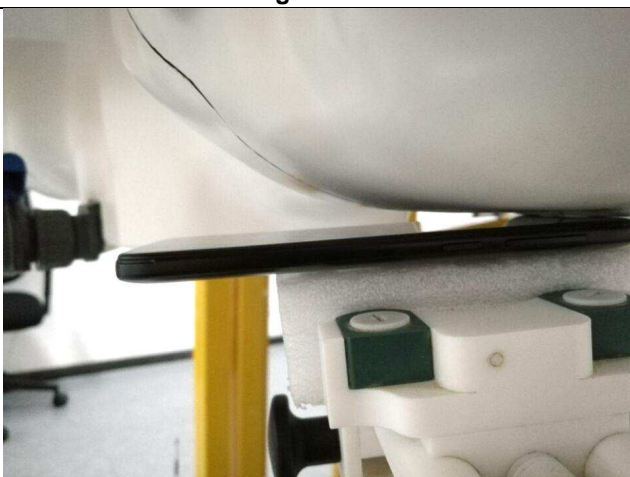
Right Cheek



Right Tilted



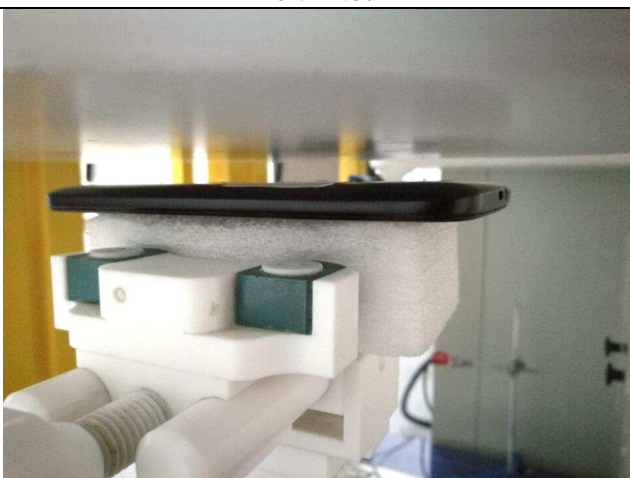
Left Cheek



Left Tilted

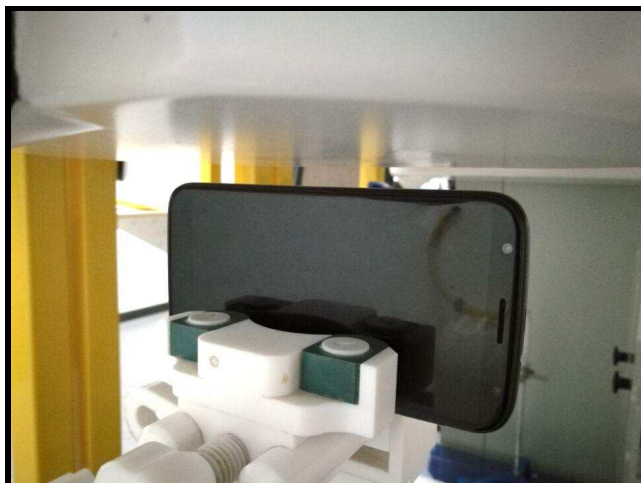


Front Face of EUT with 1.0 cm Gap

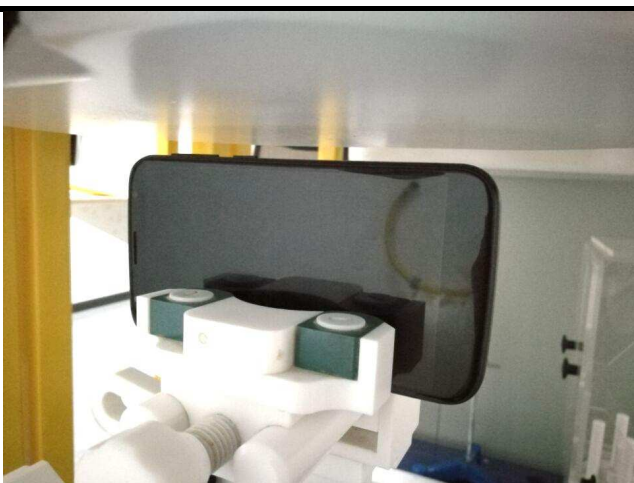


Rear Face of EUT with 1.0 cm Gap

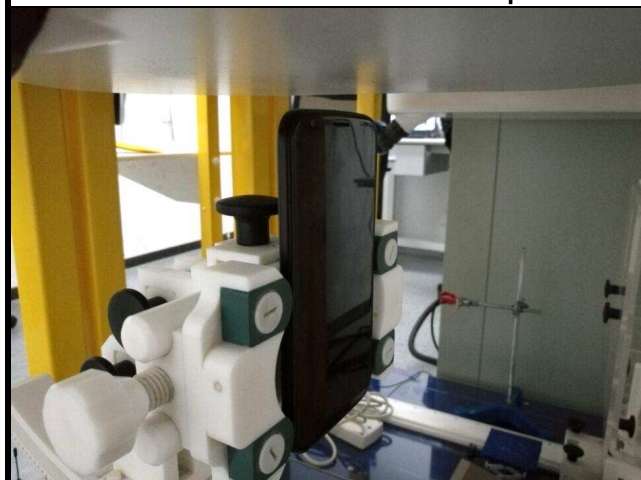
FCC SAR Test Report



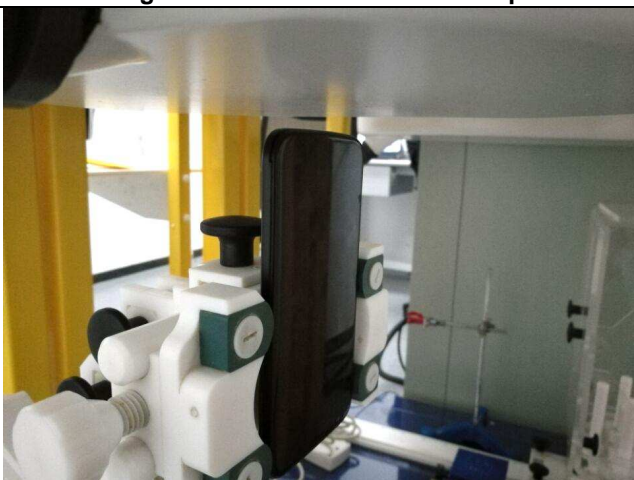
Left Side of EUT with 1.0 cm Gap



Right Side of EUT with 1.0 cm Gap



Top Side of EUT with 1.0 cm Gap



Bottom Side of EUT with 1.0 cm Gap