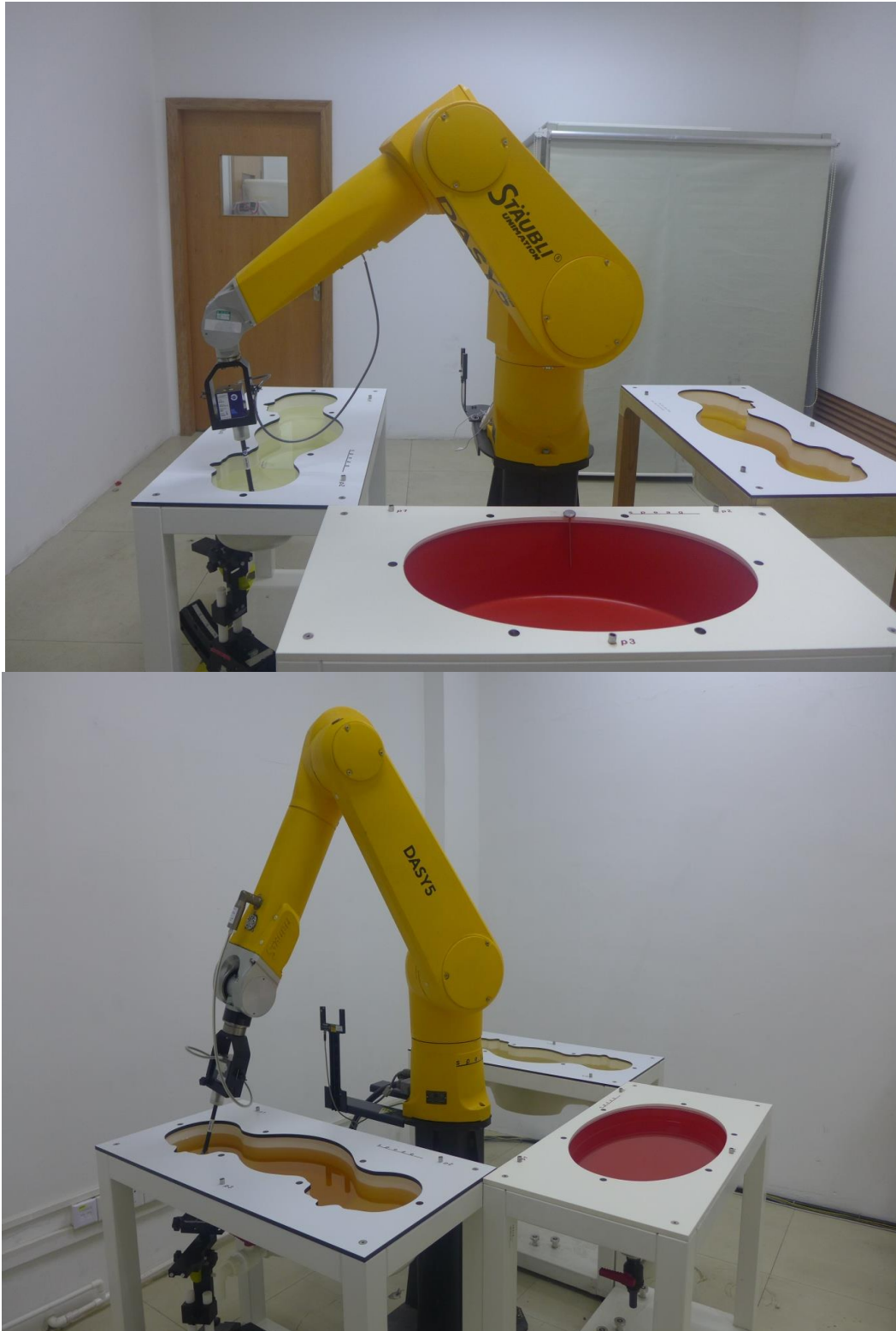


Appendix D

Photographs

1. SAR measurement System
2. Photographs of Tissue Simulate Liquid
3. Photographs of EUT test position
4. EUT Constructional Details

1. SAR measurement System



2. Photographs of Tissue Simulate Liquid

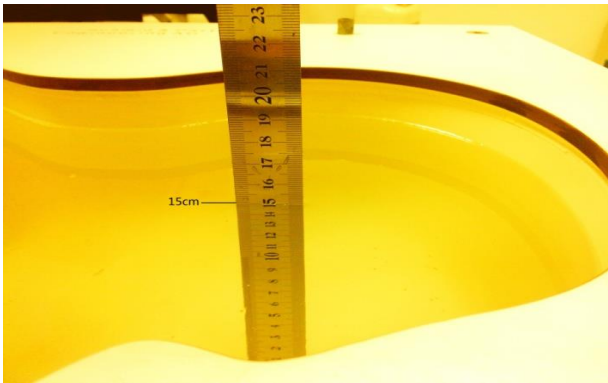
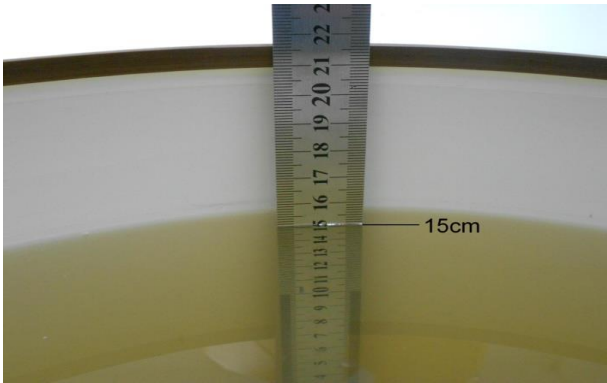
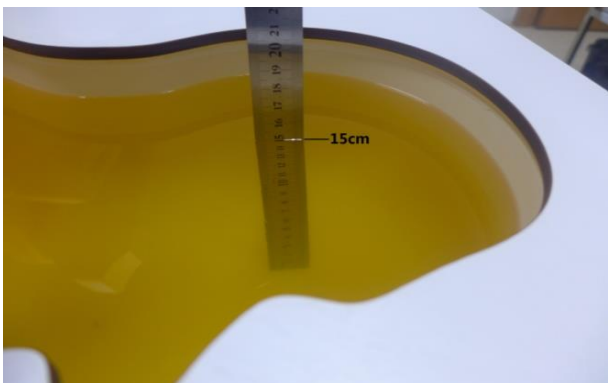
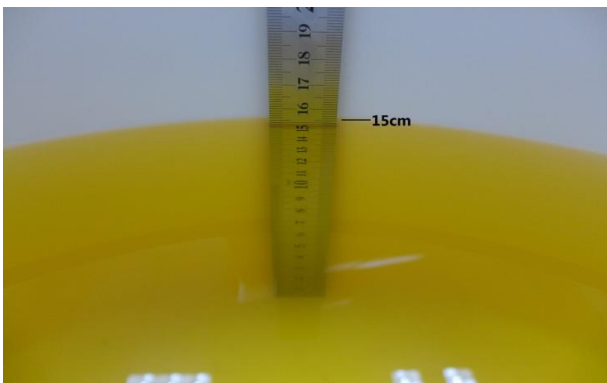
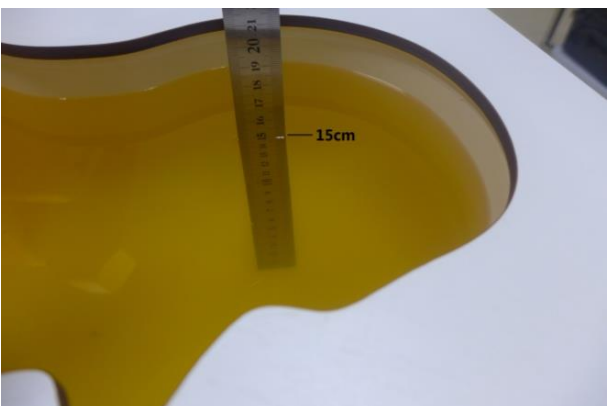
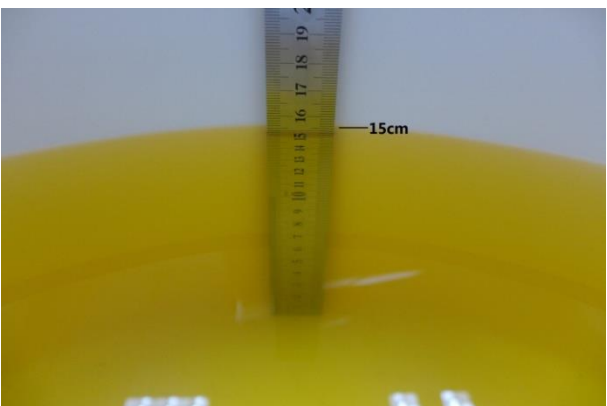
<p>Photo 1: Tissue Simulant Liquid for Head 835</p>	<p>Photo 2: Tissue Simulant Liquid for Body 835</p>
	
<p>Photo 3: Tissue Simulant Liquid for Head 1750</p>	<p>Photo 4: Tissue Simulant Liquid for Body 1750</p>
	
<p>Photo 5: Tissue Simulant Liquid for Head 1900</p>	<p>Photo 6: Tissue Simulant Liquid for Body 1900</p>
	

Photo 7: Tissue Simulant Liquid for Head 2450

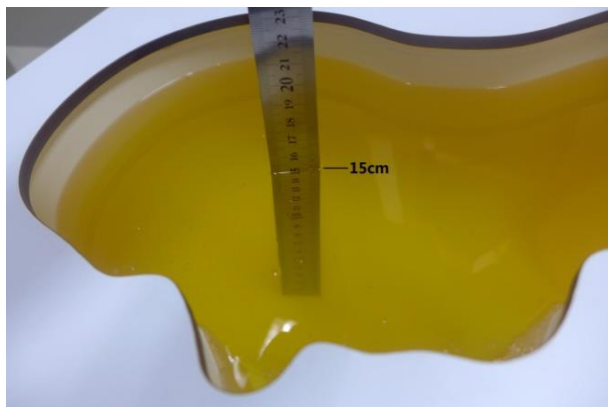


Photo 8: Tissue Simulant Liquid for Body 2450

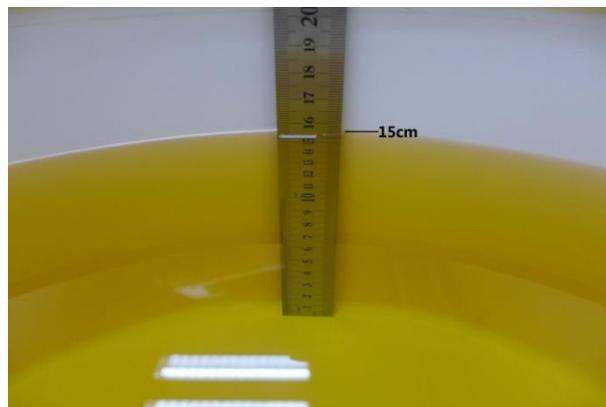


Photo 9: Tissue Simulant Liquid for Head 2600

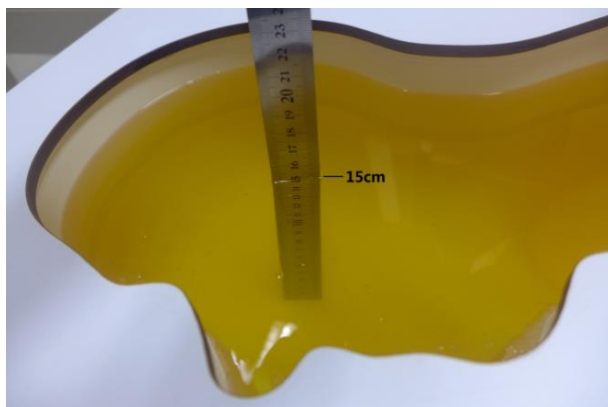


Photo 10: Tissue Simulant Liquid for Body 2600

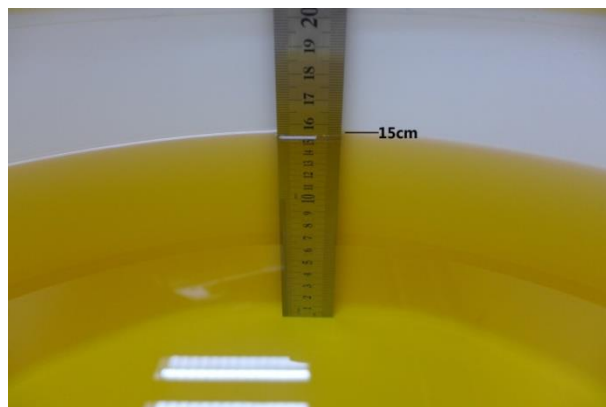


Photo 11: Tissue Simulant Liquid for Head 5G

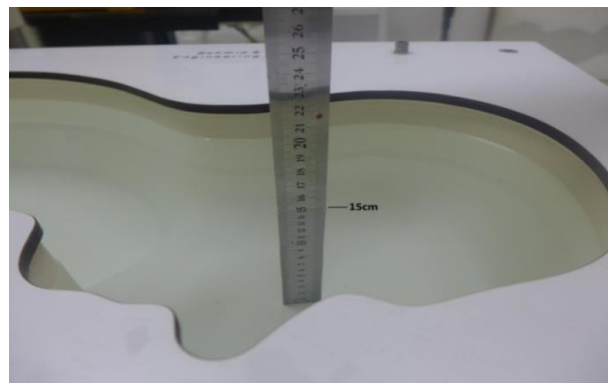
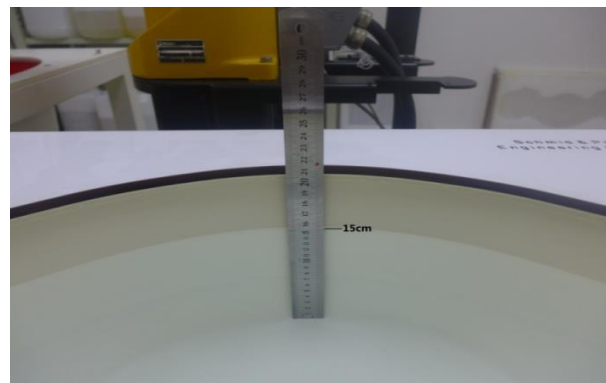


Photo 12: Tissue Simulant Liquid for Body 5G



3. Photographs of EUT test position

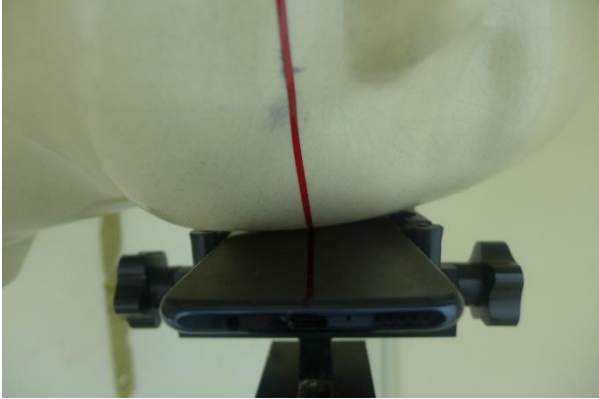
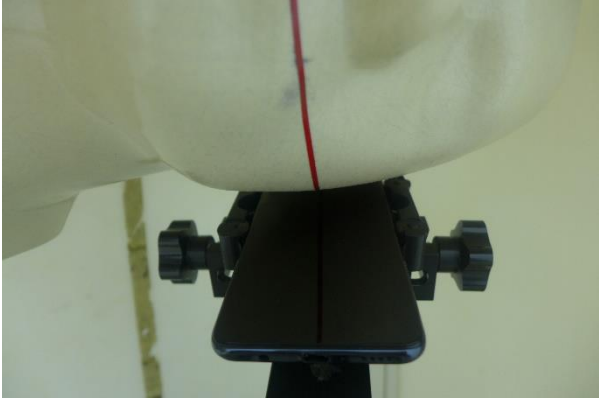
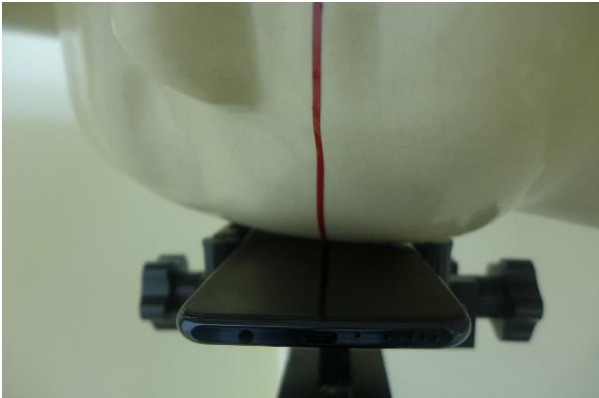
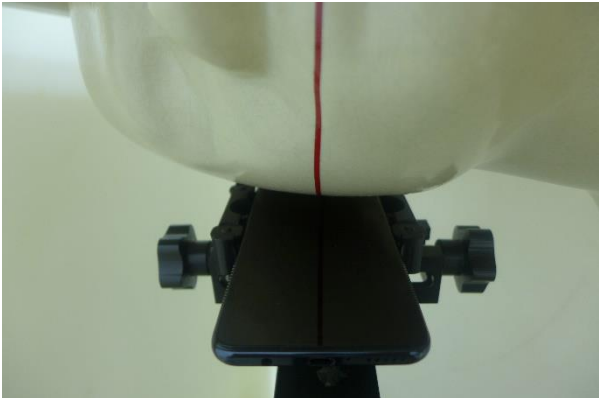


<p>Photo 13: Left touch cheek</p> 	<p>Photo 14: Left tilted 15 degree</p> 
<p>Photo 15: Right touch cheek</p> 	<p>Photo 16: Right tilted 15 degree</p> 
<p>Photo 17: Front side 15mm</p> 	<p>Photo 18: Back side 15mm</p> 

Photo 19: Front side 10mm



Photo 20: Back side 10mm



Photo 21: Left side 10mm

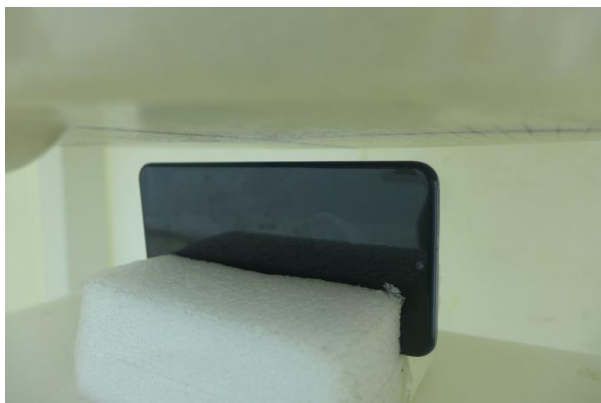


Photo 22: Right side 10mm

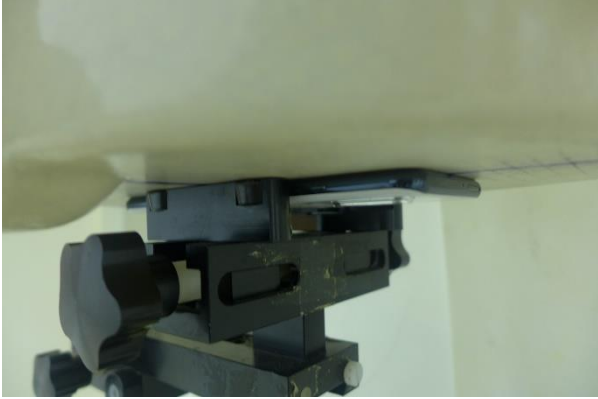





Photo 23: Top side 10mm






Photo 24: Bottom side 10mm



Photo 25: Front side 0mm	Photo 26: Back side 0mm
 A close-up photograph showing a black mechanical component, possibly a hinge or latch, mounted on a light-colored surface. The component has a complex shape with a central slot and a small protrusion on the right side.	 A close-up photograph showing the back side of the same black mechanical component. It features a similar design to the front side, with a central slot and a small protrusion on the right side.
Photo 27: Right side 0mm	Photo 28: Top side 0mm
 A photograph showing the right side of the black mechanical component. It is positioned on a white, rectangular foam block. The component's side profile is visible, showing its thickness and the shape of its edges.	 A photograph showing the top side of the black mechanical component. It is positioned on a white, rectangular foam block. The top surface of the component is visible, showing its width and the shape of its top edge.

4. EUT Constructional Details

Photo 29: Front View	Photo 30: Back View
	
Photo 31: Accessory	NA
	NA