

Introduction

Refer to the iotega Reference Manual for information regarding the limitations of product use and function and manufacturer's liability. Use these instructions with the iotega Reference Manual. The WS9TCHW touchscreen is compatible and intended for use with the iotega Wireless Security System.

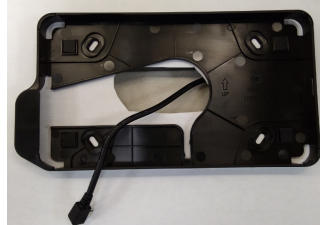
Mounting the hardware

Step 1



Install the wire through the wall for mounting.

Step 2



Attach the mounting plate to the wall with the mounting hardware. If mounting on drywall, mark the four installation points, remove the mounting plate, and install the drywall inserts.

Step 3



Connect the USB cable.

Step 4



Insert the left side of the touchscreen into the mounting bracket at a slight angle.

Step 5



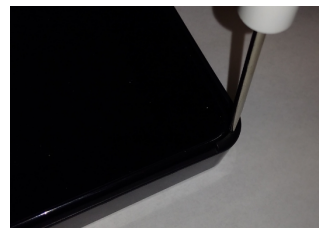
Push the right side of the touchscreen into the mounting bracket.

Step 6



Remove the breakable tab and place the flush wire wall mount through the channel.

Step 7



To remove the touchscreen insert a flat head screwdriver into one of the rear slots at a downward angle and push up to release the touchscreen.

Enrolling the touchscreen

Step 1

Power up the touchscreen.
During power up the following events occur:

- The touchscreen keypad flashes.
- The Power and Link Speed LEDs illuminate.
- The Link Activity LED flashes.
- The Remote Connection LED stays on when ready.

Step 2

If it is not enrolled, the serial number and enroll button appears.

Step 3

On the Install App go to **Enroll devices**.

Step 4

Enter the touchscreen serial number and tap **Enroll**.

Intended use

Lighting Control



Each light has an On/Off control icon and a dimmer slider, if supported. When you enroll multiple lights, you can turn them on or off simultaneously.

Locks



Each lock has a Lock/unlock control icon. When you enroll multiple locks, you can lock or unlock them simultaneously.

Thermostat



View or change the temperature and activate predefined schedules or scenes.

Garage Door



Each garage door has an Open/Close control icon. When you enroll multiple garage doors, you can open or close them simultaneously.

Video



The video menu shows the cameras on the system. You can view videos from a particular camera and use the camera options to rotate or angle the image.

Weather



Tap the weather icon to bring up a weekly weather forecast menu and the high and low temperatures for each day.

Banner Messages



When the system receives a high priority message, a banner appears and overrides the screensaver. For low priority messages, an icon appears. Tap the icon to see a list of available messages.

Environmental requirements

Operating Temperature

The unit operates normally in a temperature range of -10 °C to 55 °C.

Humidity

The unit operates with a 5% to 93% RH non-condensing.

Installation Type

Indoor, non-hazardous locations. This module is to be installed by service persons only.

RoHS

This product is RoHS compliant.

Tablet Specifications

Screen

Type : Capacitive Touch

Size: 7" diagonal

Screen dimensions: 155 x 85 mm (approx)

Resolution (min): 800 x 480 pixels (min)

Dot (Pixel) Shape : Square

Response Time (Tr/Tf): 10/15 ms (Typ.)

Viewing Angle: Right: 60, Left: 60, Up: 60, Down: 60 degrees

Brightness: 400 Nit (Typ.) at 25 °C

Backlight Colour: White Colour

Contrast Ratio: 400:1

Colours: 256/65 k

Multi-touch: N/A

Ambient Light Sensor: N/A

Sunlight readable: N/A

OS

Android V4.4 or greater

Electrical specifications

Primary power source

Plug in adapter M/N: SEI0502000V
Helms-Man Transformers
Company limited

Energy Efficiency level 6

Ratings:

Input: 100 - 240 V - 50 - 60 Hz 500 mA

Output : 5 V - 2000 mA

Standby Battery

4 hour (min) standby, rechargeable

Intended application

100% up time expected

External power control

N/A (power cycle button)

Note: USB port only for power supply and battery charging, it cannot connect to PC for communication.

Memory specifications

Storage	Memory (DDR3)	SD card port	USB
4 GB minimum	512 MB	microSD card	2.0, microUSB connection USB cable length 10 ft / 350 cm

Unit specifications

Unit	Peripherals	Mounting
Size: 190 x 110 x 11 mm (approx) Housing Colour : Glossy black Operating Temp: 0 °C to 50 °C Storage Temp: -30 °C to 90 °C Operating Humidity: 5 to 93% RH, non-condensing	Camera : 3 megapixels; (minimum) Screen side placement (front facing) Auto focus, Flash (N/A) Microphone: Yes Audio input (connection): N/A	Wall mountable : When mounted, the bracket should not be visible

Other specifications

Safety Instructions	SAR Data	Frequency Range	RF Output Power
For safety instructions please refer to the Installation Manual for the panel.	SAR test distance is 5 mm. Max SAR is	2412 MHz to 2462 MHz for US 2412 MHz to 2472 MHz for EU	16 dBm maximum

FCC and ISED COMPLIANCE STATEMENT

This equipment has been tested and found to comply with the limits for a Class B digital device, pursuant to Part 15 of the FCC Rules. These limits are designed to provide reasonable protection against harmful interference in a residential installation.

Caution: Changes or modifications not expressly approved by Digital Security Controls could void your authority to use this equipment.

This equipment generates and uses radio frequency energy and if not installed and used properly, in strict accordance with the manufacturer's instructions, may cause interference to radio and television reception. It has been type tested and found to comply with the limits for Class B device in accordance with the specifications in Subpart "B" of Part 15 of FCC Rules, which are designed to provide reasonable protection against such interference in any residential installation. However, there is no guarantee that interference will not occur in a particular installation. If this equipment does cause interference to television or radio reception, which can be determined by turning the equipment off and on, the user is encouraged to try to correct the interference by one or more of the following measures: (i) Re-orient the receiving antenna; (ii) increase the separation between the equipment and receiver; (iii) connect the equipment into an outlet on a circuit different from that to which the receiver is connected. If necessary, the user should consult the dealer or an experienced radio/television technician for additional suggestions. The user may find the following booklet prepared by the FCC helpful: "How to Identify and Resolve Radio/Television Interference Problems". This booklet is available from the U.S. Government Printing Office, Washington, D.C. 20402, Stock# 004-000-00345-4. This Class B digital apparatus complies with Canadian ICES-003. Cet appareil numérique de la classe B est conforme à la norme NMB-003 du Canada. IC:160A-WS9TCHW. The term IC before the radio certification number signifies that the Industry Canada technical specifications were met.

Caution: Do not dispose of the waste battery as unsorted municipal waste. Consult your local rules and/or laws regarding recycling of this battery.

SIMPLIFIED EU DECLARATION OF CONFORMITY

Hereby, Tyco Safety Products Canada Ltd declares that the radio equipment type Wireless Keypad for Iotega Alarm System is in compliance with Directive 2014/53/EU.

The full text of the EU declaration of conformity is available at the following Internet address:

<http://dsc.com/pdf/1707010>

Frequency Bands and Maximum Power level

2400 MHz - 2483.5 MHz: 100 mW

European Single Point of Contact: Tyco Safety Products, Voltaweg 20, 6101 XK Echt, Netherlands

Industry Canada Statement

The device complies with Industry Canada RSS standard(s). Operation is subject to the following two conditions: (1) this device may not cause interference, and (2) this device must accept any interference that may cause undesired operation of the device.

2. Changes or modifications not expressly approved by the party responsible for compliance could void the user's authority to operate the equipment.

Le présent appareil est conforme aux CNR d'Industrie Canada applicables aux appareils radio.

Exempts de licence. L'exploitation est autorisée aux deux conditions suivantes :

(1) l'appareil ne doit pas produire de brouillage, et (2) l'utilisateur de l'appareil doit accepter tout brouillage radioélectrique subi, même si le brouillage est susceptible d'en compromettre le fonctionnement."

Caution

Risk of explosion if battery is replaced
by an incorrect type.

Dispose of used batteries according
to the instructions.

The device is designed and manufactured not to exceed the emission limits for exposure to radio frequency (RF) energy set by the Federal Communications Commission of the United States.

During SAR testing, the device is set to transmit at its highest certified power level in all tested frequency bands. Although the SAR is determined at the highest certified power level, the actual SAR level of the device while operating can be well below the maximum value. This is because the device is designed to operate at multiple power levels so as to use only the power required to reach the network. In general, the closer you are to a wireless base station antenna, the lower the power output.

The exposure standard for wireless employs a unit of measurement known as the Specific Absorption Rate, or SAR. The SAR limit set by the FCC is 1.6 W/kg.

Tests for SAR are conducted using standard operating positions accepted by the FCC with the device transmitting at its highest power level in all tested frequency bands.

The FCC has granted an Equipment Authorization for this model device with all reported SAR levels evaluated as in compliance with the FCC RF exposure guidelines. SAR information on this model device is on file with the FCC and can be found under the Display Grant section of www.fcc.gov/oet/ea/fccid, after searching on FCC ID: F5317W59TCHW.

For this device, the highest reported SAR value for near the body is 0.52W/kg RF exposure in simulated usage near the body with 5 mm separation.