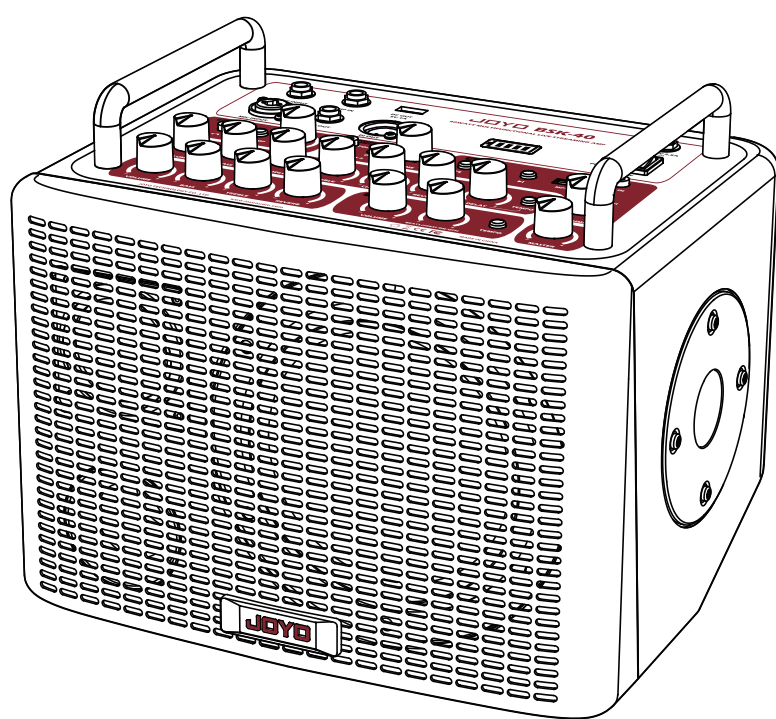


# BSK-40

## MULTIFUNCTIONAL LIVE STREAMING AMP

### Owner’s Manual



JOYO

JOYO

#### Detailed safety instructions:

- Use the attached power adapter only. It has passed strict tests and has safety certificates. If use other power adapters, it will increase noise, damage the internal circuits or the built-in battery.
- Do not expose it to any damp areas such as bathtub, toilet, washing-tub, sink, swimming pool. Avoid spill liquid substance into the product, otherwise it will lead to malfunction or electric shock.
- Don't use this product in places where is full of flammable and explosive gas, such as gas station or dusty areas.
- Use BSK-40's attached AC power adapter only! If you choose other adapters, they might not compatible for BSK-40's input voltage damage the unit or worse.
- BSK-40's attached adapter has passed the related electromagnetic compatibility tests and has safety certificates. If you use other power adapters, we're not sure whether they meet your country or region's compulsory safety certification standards.
- If the attached power adapter is broken, and you need to buy a new one, please make sure its polarity of power source and maximum power are the same as the attached power adapter.
- In order to save energy, please turn off the power switch after use.
- Do not use alcohol or other cleaning fluids to clean this product, otherwise it will damage the surface, use a clean dry cloth when necessary.
- Do not open the case for any reason, please contact professional maintenance men if it malfunctions, or contact your local retailer for maintenance.
- Do not pull the power cord or other parts of this product, so as not to damage the power cord and plugs.
- Please turn off this product and unplug it during a thunderstorm, lightning or not in use for a long time.
- Do not collide, throw or vibrate this equipment.
- To protect the built-in battery, please have a full charge if it is not in use for a long time and ensure charge it for every 2 months.
- If it indicates low battery, please charge it in time, as over discharge and low battery will cause irreversible loss to the battery capacity, and damage the battery.
- Use only with the cart, stand, tripod, bracket, or table specified by the manufacturer, or sold with the apparatus. When a cart is used, use caution when moving the cart/apparatus combination to avoid injury from tip-over.



1

JOYO

#### Features

- 40W 2-Channel multi-functional outdoor live streaming amp(1 Guitar Channel/1 Mic Channel)
- Built-in drum machine(20 drum patterns in all)
- Built-in digital effects(REVERB/CHORUS/DELAY)
- 2x3.5mm Jack for smart phone recording( live streaming)
- Lithium battery facilitates outdoor use(can be used for 3hrs continuously once fully charged, a full charge takes 4.5hrs.)
- Can connect to 2 amps in series.
- With precise power indication, the LCD screen displays how much power is left.
- With support bracket and support hole, suitable for different venues.
- DI Output Jack(easy to connect to the mixer or PA system)and MUTE button
- USB OTG Jack for live streaming, with a Type-C Jack

#### Package contents

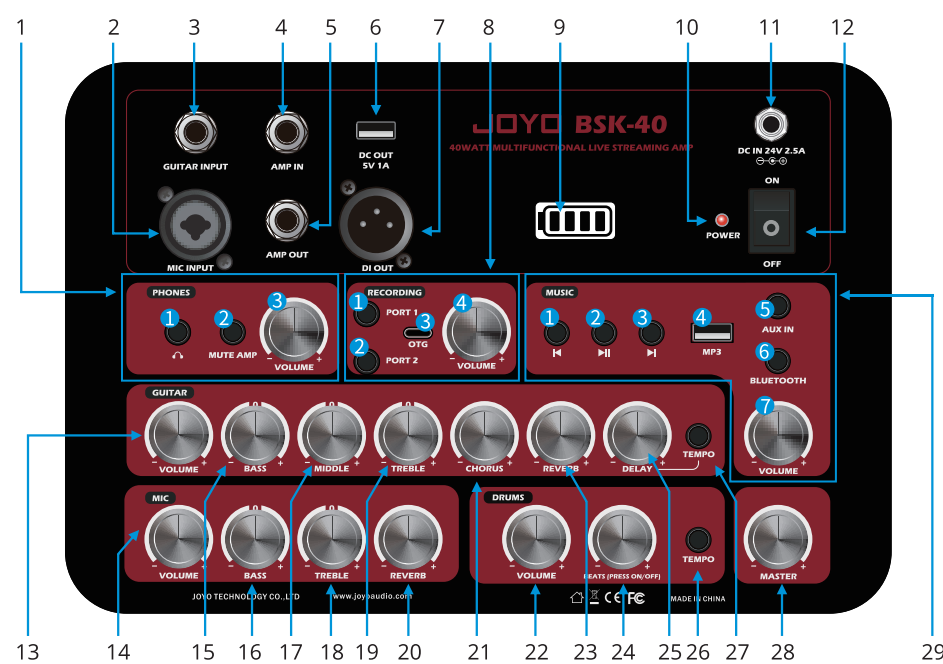
BSK-40×1  
Power adapter×1  
Power cable×1  
Type-C to Lightning Adapter×1  
Type-C to Type-C USB cable×1  
Owner's manual×1  
Nylon guitar amp carry bag×1

**Note: There is anti-collision EPE foam in the bag,pls don't discard it.**

2

JOYO

#### Panel



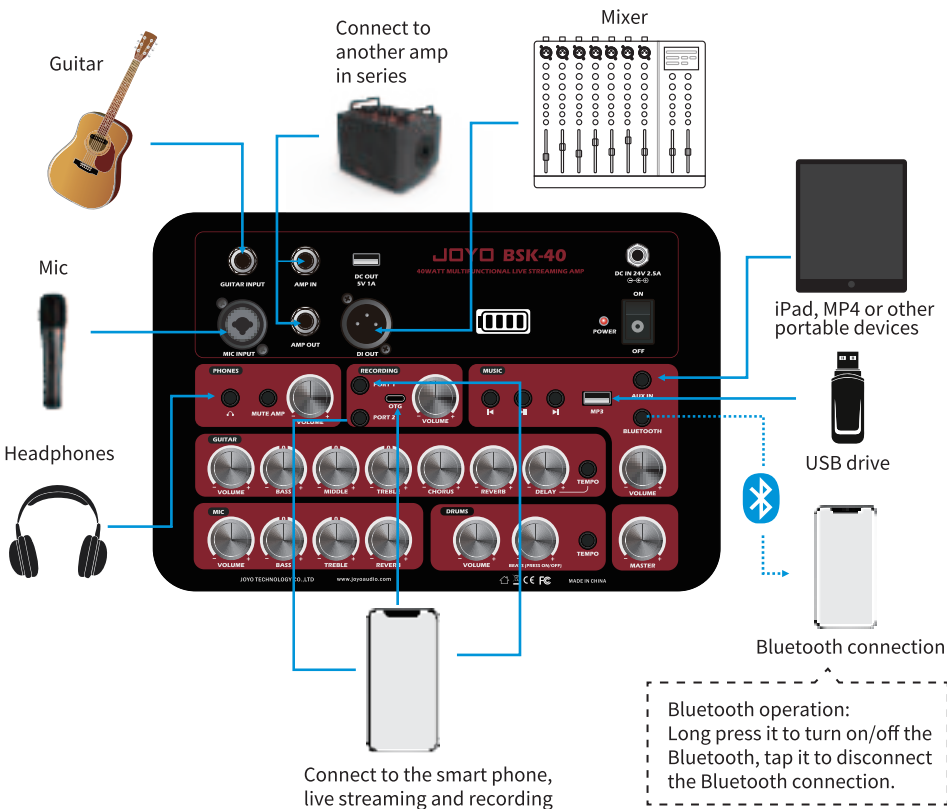
1. PHONES Function module  
① Headphone Jack  
② Mute amp: amplifier's Mute button  
③ VOLUME: for adjusting headphones' VOLUME  
2. MIC Input Jack  
3. Guitar Input Jack  
4. 6.35mm amp connection in series Input Jack  
5. 6.35mm amp connection in series Output Jack  
6. USB DC5V Output Jack  
7. XLR DI Output Jack  
8. RECORDING function module  
① PORT 1: 3.5mm smart phone live streaming/recording Jack  
② PORT 2: 3.5mm smart phone live streaming/recording Jack  
③ OTG live streaming/recording Jack(Type-C)  
④ VOLUME: for adjusting the VOLUME for live streaming/recording Channel  
9. Battery indicator  
10. Working status indicator  
11. Power adapter charging port  
12. Power switch  
13. Guitar Channel Volume Control knob  
14. Mic Channel Volume Control knob  
15. Guitar Channel Bass Control knob  
16. Mic Channel Bass Control knob  
17. Guitar Channel MIDDLE Control knob

3

JOYO

18. Mic Channel Treble Control knob  
19. Guitar Channel Treble Control knob  
20. Mic Channel REVERB Mix Ratio Control Knob  
21. Guitar Channel CHORUS Mix Ratio Control Knob  
22. Drum machine Channel Volume Control Knob  
23. Guitar Channel REVERB Mix Ratio Control Knob  
24. Drum machine Channel drum pattern selection Knob  
25. Guitar Channel DELAY Mix Ratio Control Knob  
26. Drum machine Channel TAP TEMPO button  
27. Guitar Channel DELAY TAP TEMPO button(1000ms max)  
28. Master Volume Control Knob  
29. MUSIC function module  
① Previous  
② Pause/Play  
③ Next  
④ "MP3": for connecting to the USB drive  
⑤ AUX IN: AUX IN Jack  
⑥ Bluetooth switch  
⑦ VOLUME knob: for adjusting the VOLUME of music playing

#### Connection diagrams



4

JOYO

#### Specifications

AC adapter input voltage: AC100-240V 50-60Hz  
AC adapter output voltage: DC 24V/2.5A  
Battery's specification: 18.5V/5.2Ah(lithium battery)  
USB Charging Output: DC 5V/1A  
Guitar Channel Input Sensitivity: -11.5dBV 1MΩ  
Mic Channel Input Sensitivity: -41dBV 5.6KΩ  
AUX IN Sensitivity: 0dBV 3.9KΩ  
PORT 1, POR 2 Input Impedance: 10KΩ  
Headphone Out Impedance: 32Ω  
AMP IN Impedance: 11KΩ  
AMP OUT Impedance: 1KΩ  
DI OUT Impedance: 1KΩ  
RMS: 40W  
Bass unit: 6.5 inches, 4Q, 50W  
Treble unit: 2.75 inches, 8Q, 15W  
Dimensions: 30x24x24.4cm  
Weight: 5.7kg

JOYO TECHNOLOGY CO., LTD

Address: 2/F, Lushi Industry Building, 28th District, Bao'an, Shenzhen, 518101 China.  
www.joyoaudio.com Email: info@joyoaudio.com Tel: 0086-755-29765381

5

## **FCC warning statements:**

This equipment has been tested and found to comply with the limits for a Class B digital device, pursuant to part 15 of the FCC Rules. These limits are designed to provide reasonable protection against harmful interference in a residential installation. This equipment generates, uses and can radiate radio frequency energy and, if not installed and used in accordance with the instructions, may cause harmful interference to radio communications. However, there is no guarantee that interference will not occur in a particular installation. If this equipment does cause harmful interference to radio or television reception, which can be determined by turning the equipment off and on, the user is encouraged to try to correct the interference by one or more of the following measures:

- Reorient or relocate the receiving antenna.
- Increase the separation between the equipment and receiver.
- Connect the equipment into an outlet on a circuit different from that to which the receiver is connected.
- Consult the dealer or an experienced radio/TV technician for help.

Caution: Any changes or modifications to this device not explicitly approved by manufacturer could void your authority to operate this equipment.

This device complies with part 15 of the FCC Rules. Operation is subject to the following two conditions: (1) This device may not cause harmful interference, and (2) this device must accept any interference received, including interference that may cause undesired operation.

The device has been evaluated to meet general RF exposure requirement This equipment complies with FCC radiation exposure limits set forth for an uncontrolled environment.

This equipment should be installed and operated with minimum distance 20cm between the radiator & your body.