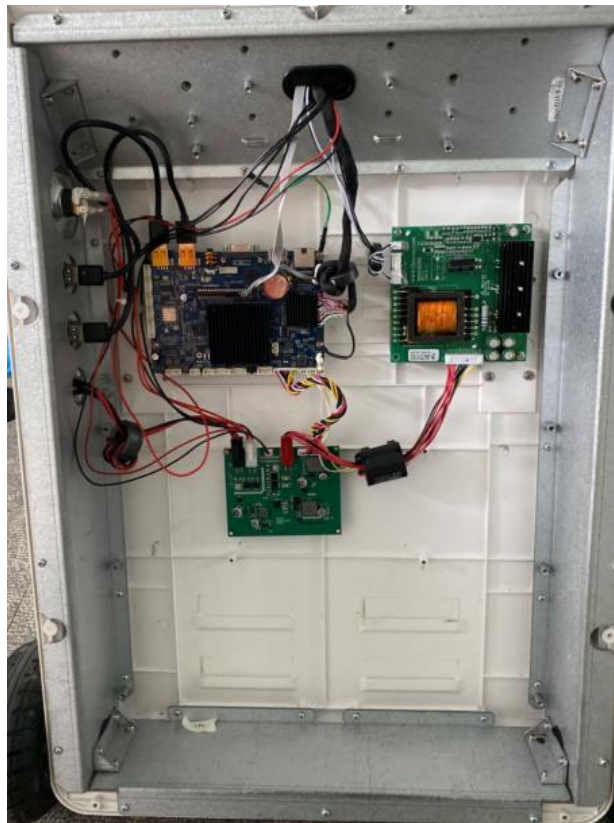


Internal photos



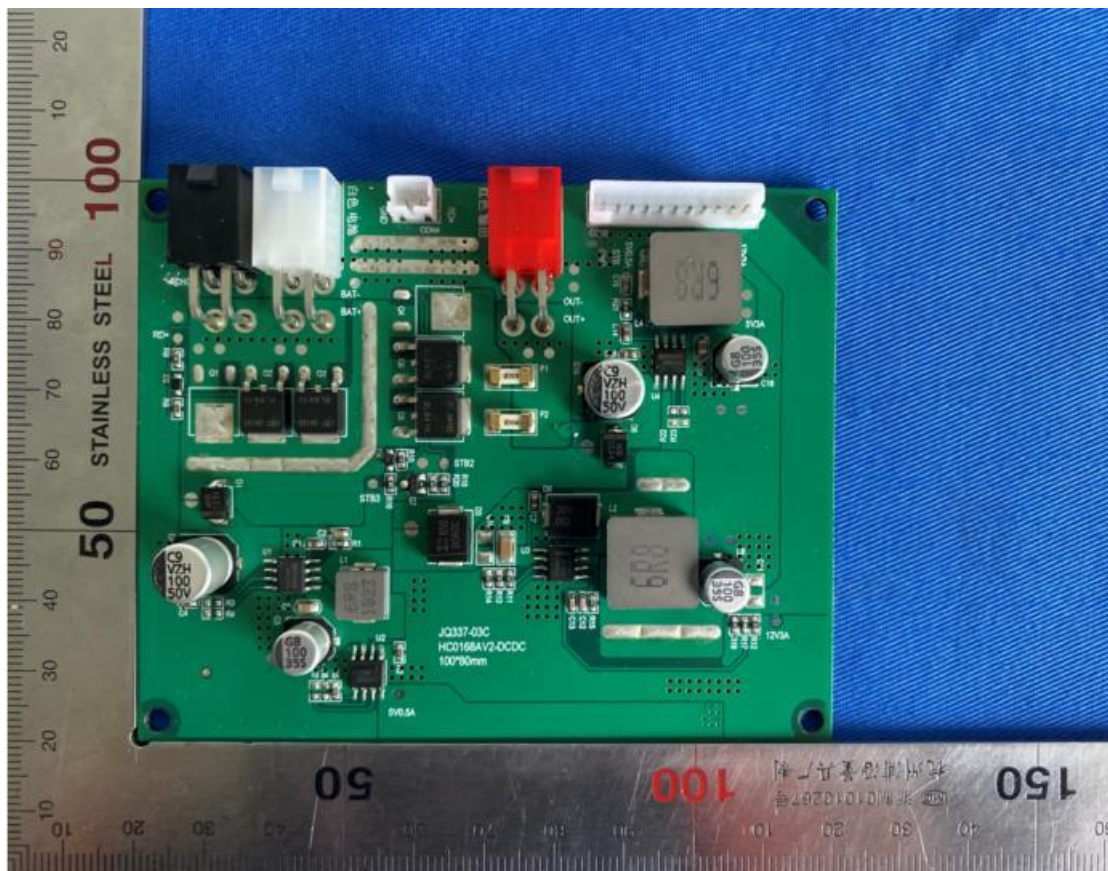
Picture 1– Inner view



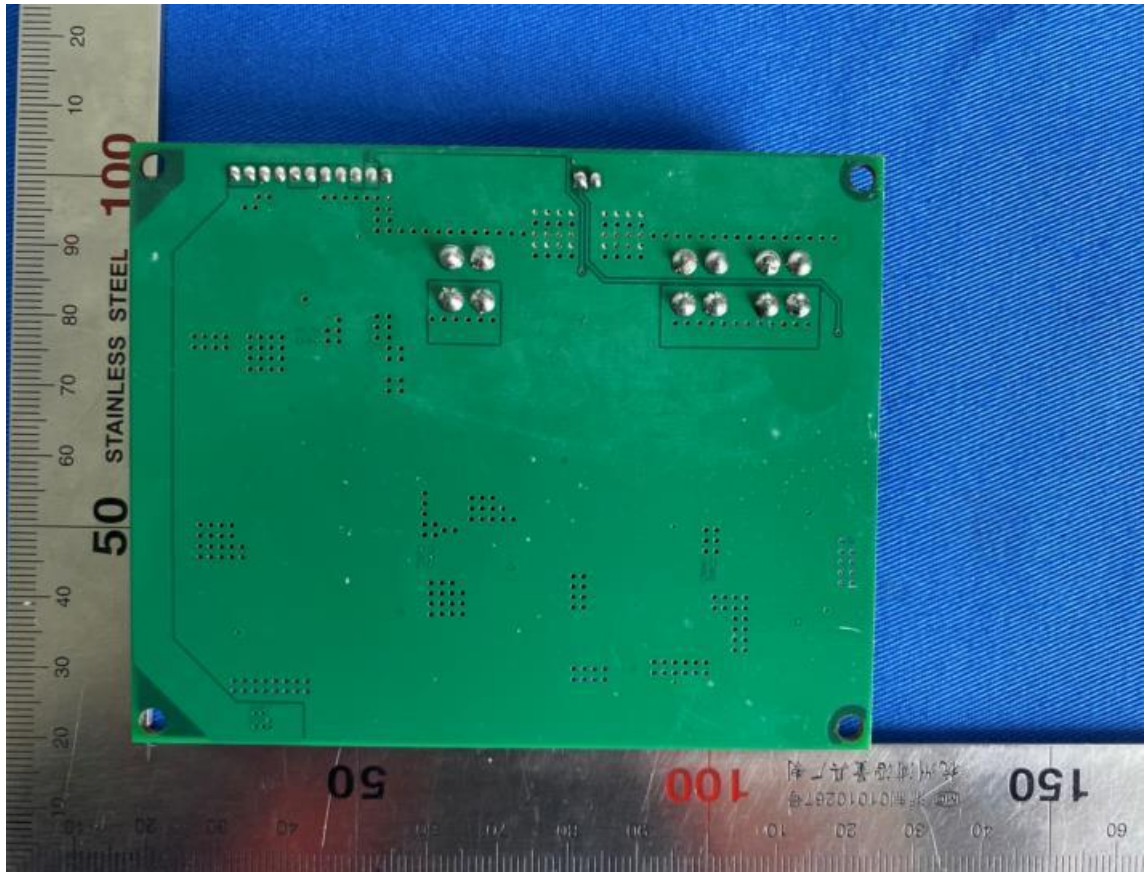
Picture 2– Inner view



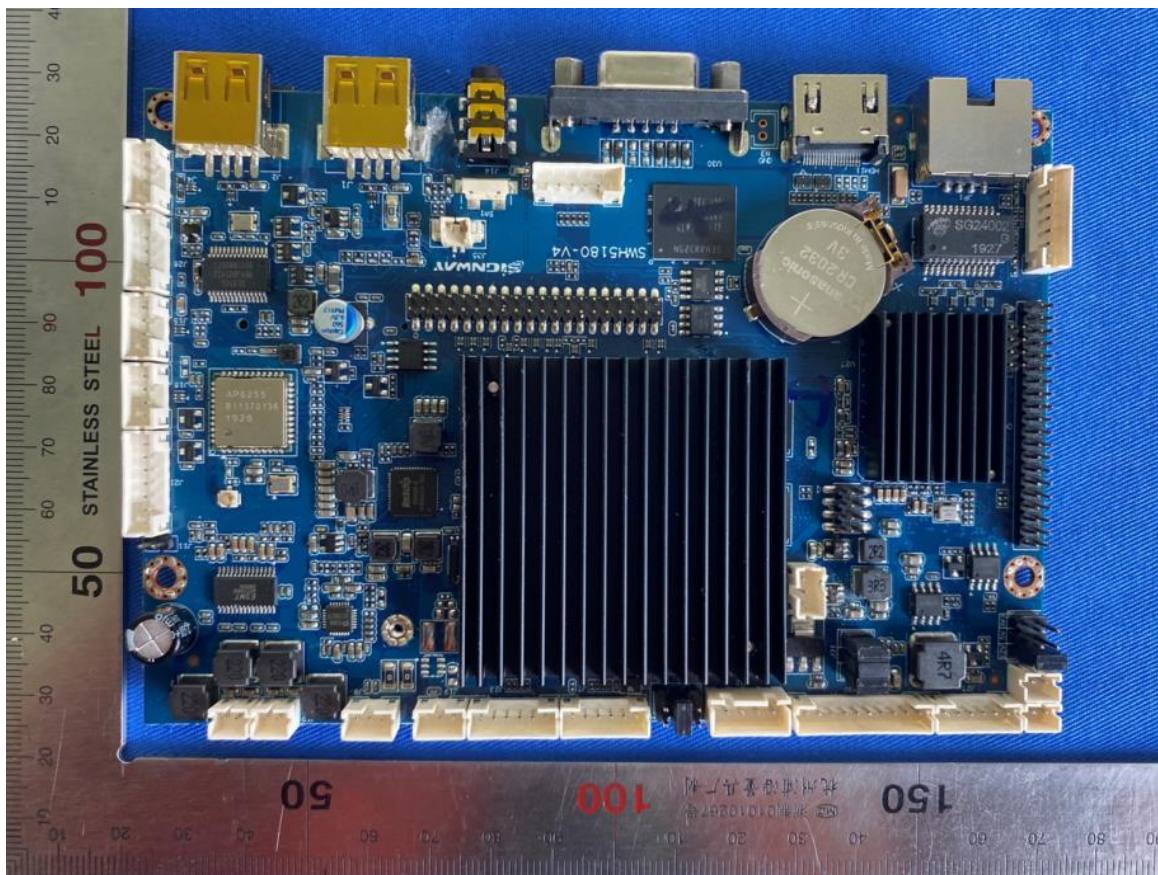
Picture 3 – Inner view



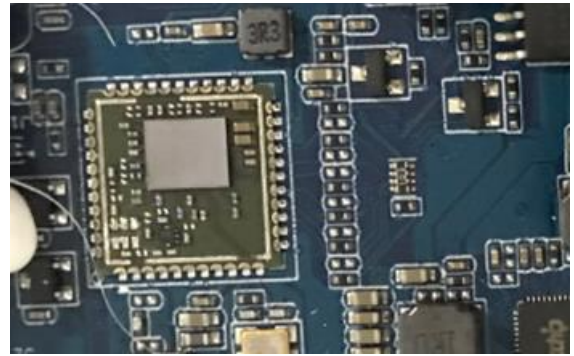
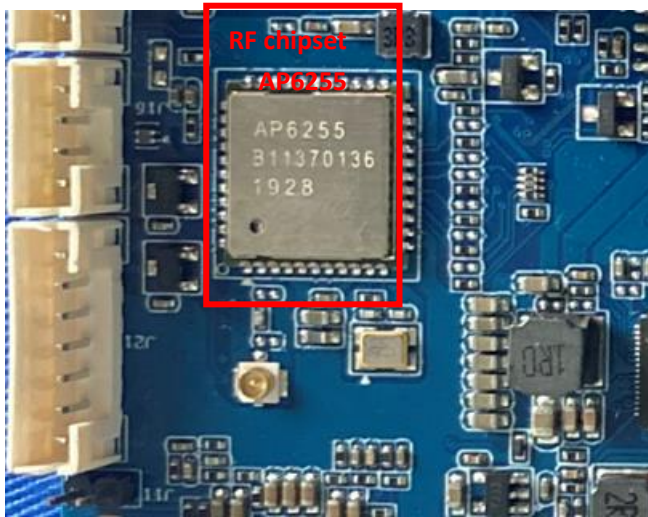
Picture 4 –Power board (front)



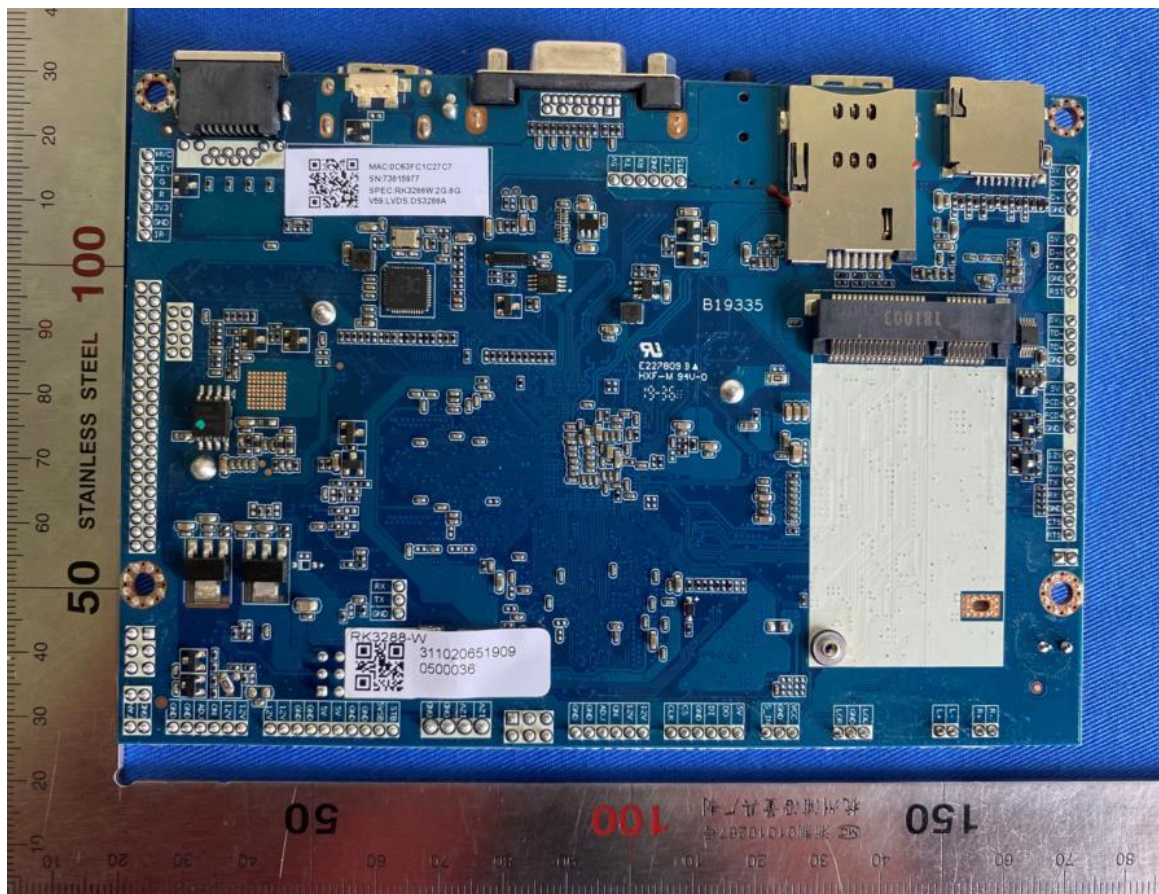
Picture 5–Power board (back)



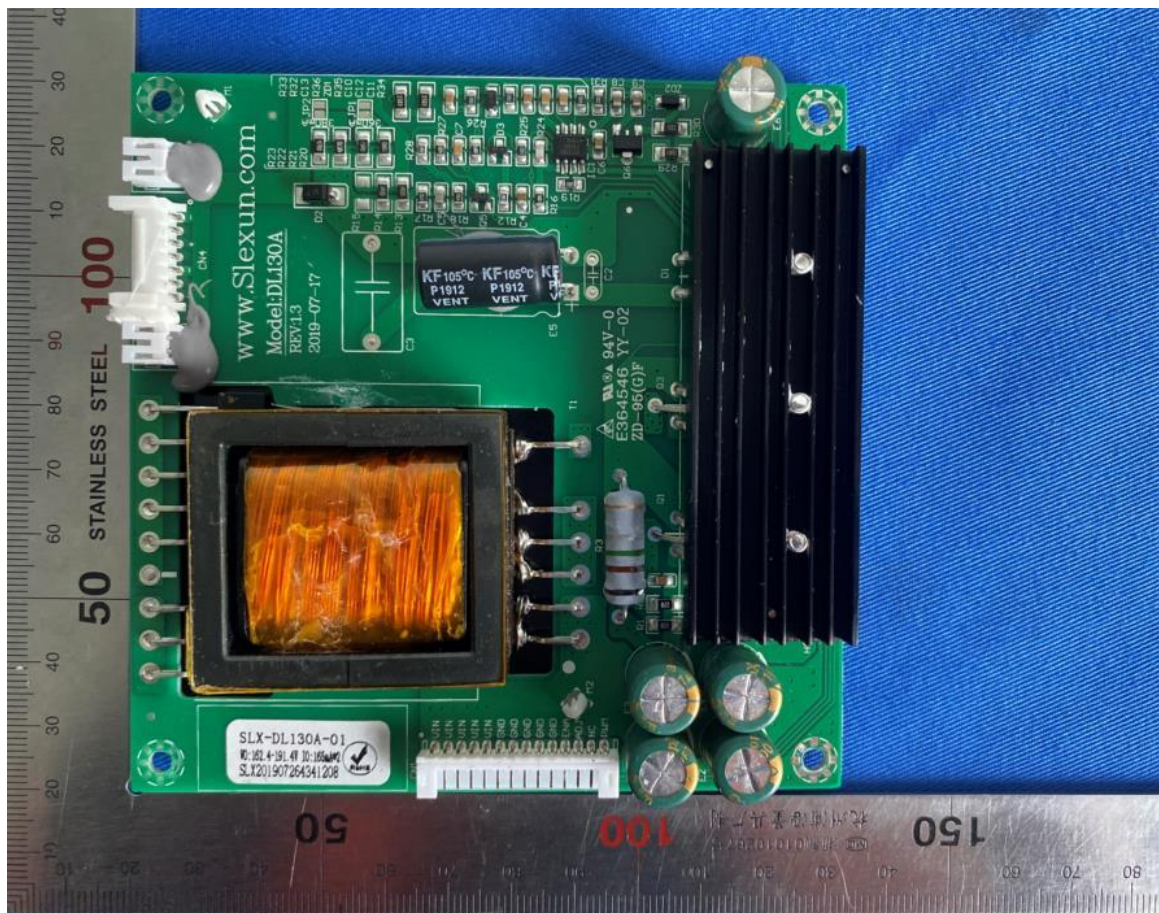
Picture 6 – Main board view



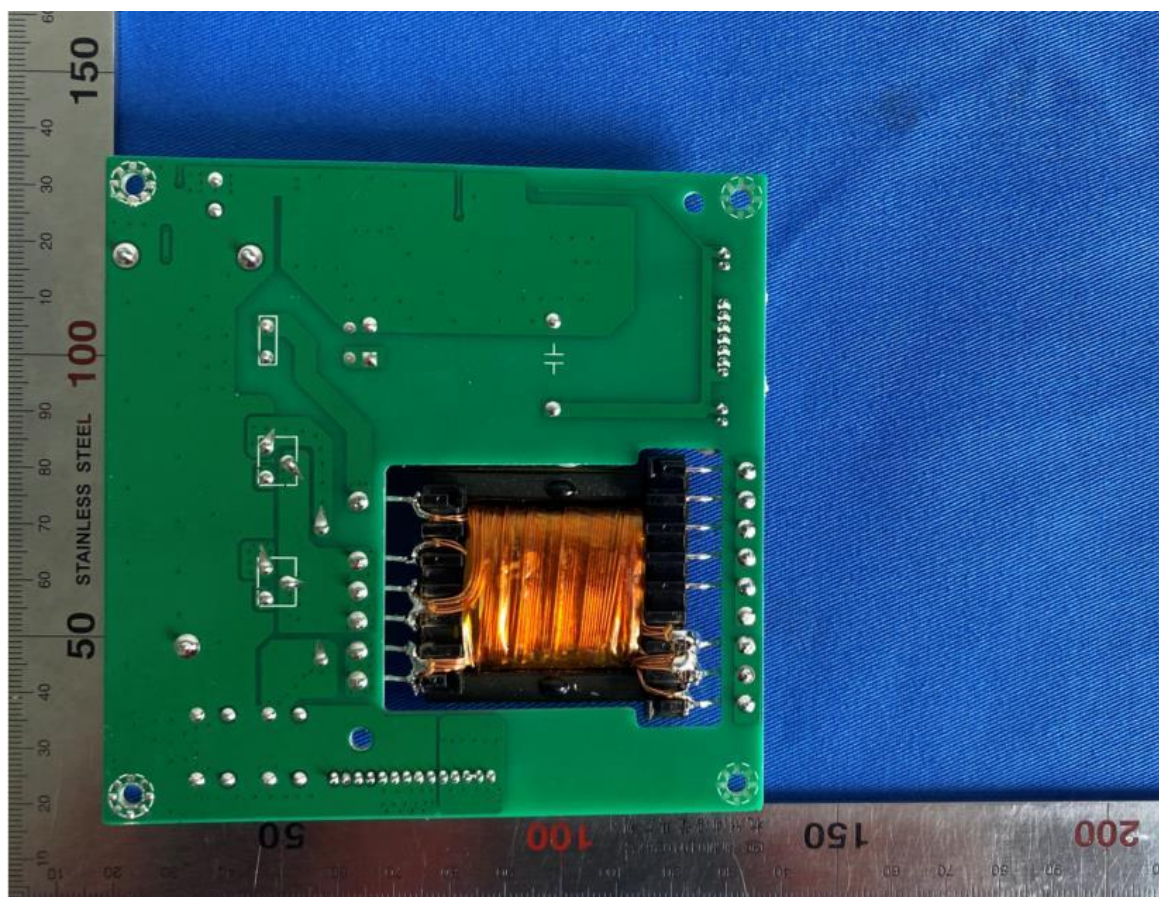
Picture 7 – RF chipset view



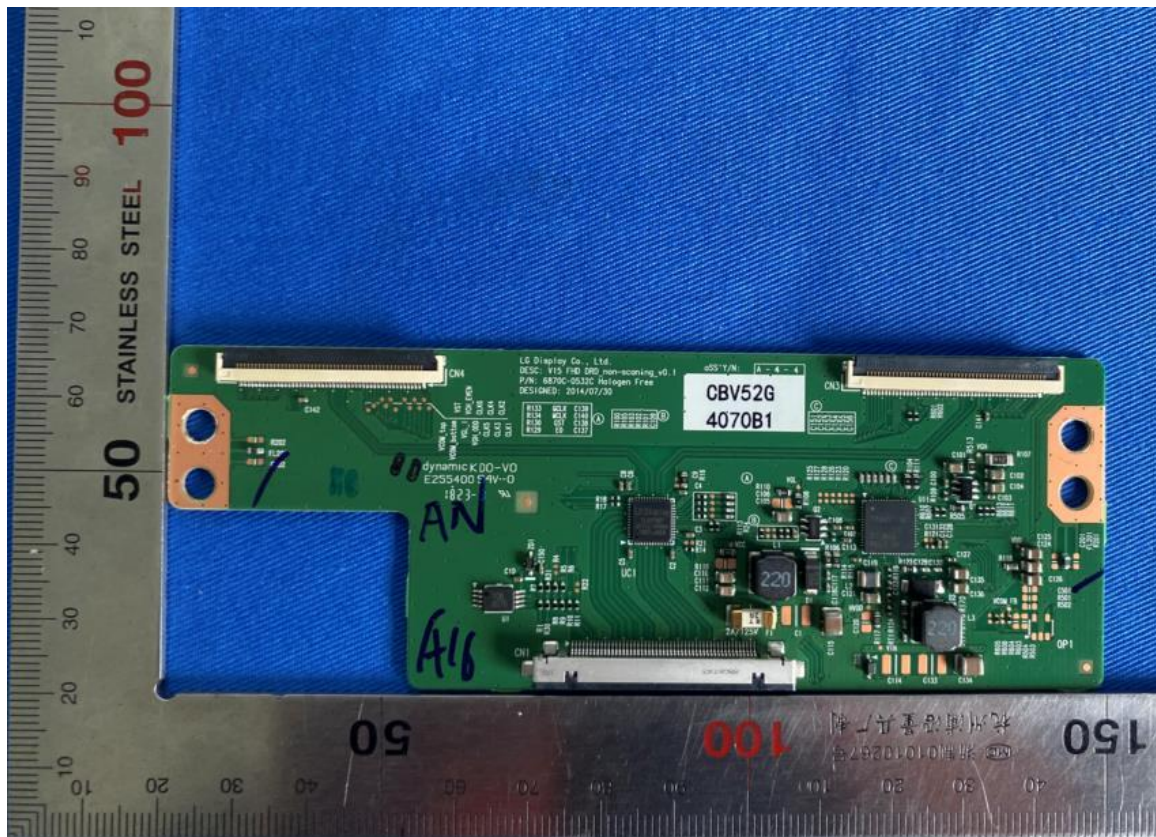
Picture 8 – Main board back



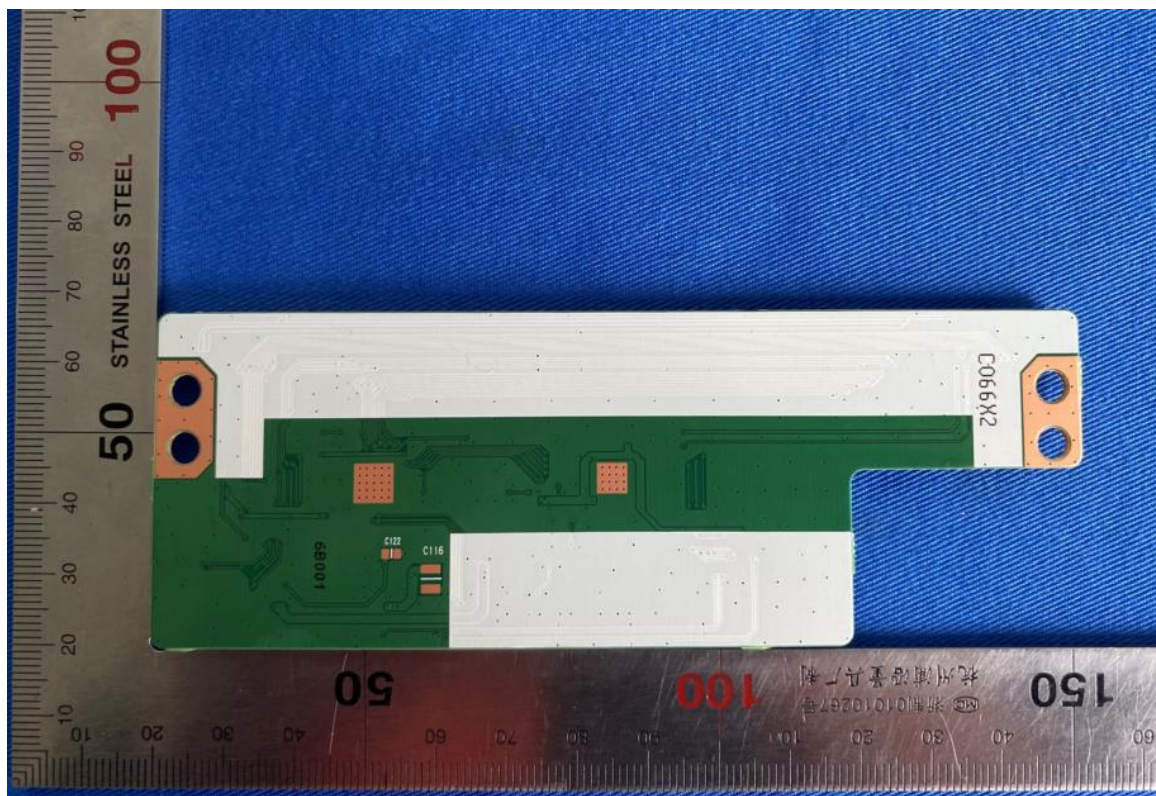
Picture 9 – Control board (front)



Picture 10– Control board (back)



Picture 11 – Conversion board(front)



Picture 12 – Conversion board(back)