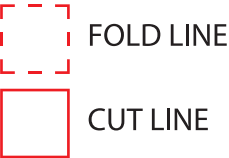
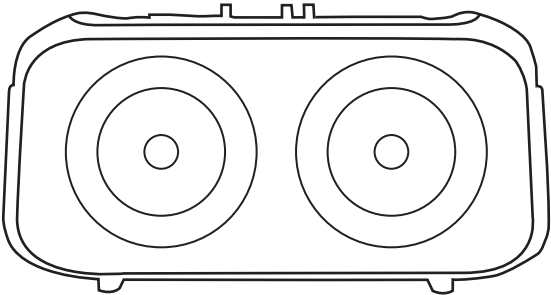


PRINT ARTWORK ON DIRECTLY ON PAPER.
DO NOT PRINT RED FOLD AND CUT LINES. OPEN USER MANUAL DIMENSIONS: 6.46”W x 5.5” H



ijoy

LED WIRELESS SPEAKER
HYPE



USER
MANUAL

for use with
Bluetooth
enabled devices

•YOUR IJOY PRODUCT

Thank you for purchasing and using the “IJOY HYPE” LED Wireless Speaker. This product can provide a high quality listening experience through phones, computers, and multimedia. Before using this product, carefully read this manual to in order to operate at maximum benefit. Please ask your local dealer or call us if you have any questions.

IJOY HYPE x1
Charging Cable x1
Aux in cable x1
Strap x1
User Manual x1

•PRODUCT SPECIFICATIONS

- PLAYTIME: 100% VOLUME -1-2HRS; 50%-2-3HRS
- CHARGE TIME: 1 HRS
- BATTERY CAPACITY: 2400MAH
- FEATURES: BT/TF/USB/LED/FM/AUX
- LED TYPE/MODES: 4 LED MODES
- OUTPUT POWER: 20W
- INPUT: 5V
- BLUETOOTH VERSION: 5.0
- BLUETOOTH RANGE: 10M
- IPX LEVEL: IPX4

•FCC ID STATEMENT

2AJQ7HYPE

This device complies with part 15 of the FCC Rules. Operation is subject to the following two conditions:
(1) This device may not cause harmful interference, and
(2) this device must accept any interference received, including interference that may cause undesired operation.
Warning: Changes or modifications not expressly approved by the party responsible for compliance could void the user's authority to operate the equipment.

NOTE: This equipment has been tested and found to comply with the limits for a Class B digital device, pursuant to Part 15 of the FCC Rules. These limits are designed to provide reasonable protection against harmful interference in a residential installation. This equipment generates uses and can radiate radio frequency energy and; if not installed and used in accordance with the instructions, may cause harmful interference to radio communications. However, there is no guarantee that interference will not occur in a particular installation. If this equipment does cause harmful interference to radio or television reception, which can be determined by turning the equipment off and on, the user is encouraged to try to correct the interference by one or more of the following measures:

Reorient or relocate the receiving antenna.
Increase the separation between the equipment and receiver. Connect the equipment into an outlet on a circuit different from that to which the receiver is connected.
Consult the dealer or an experienced radio/TV technician for help.

RF warning statement:
The device has been evaluated to meet general RF exposure requirement. The device can be used in portable exposure condition without restriction.

•BATTERY CAUTION

The battery used in this device may present a risk of fire, explosion or chemical burn if used incorrectly. Never use or charge the battery if it appears to be leaking, discolored, deformed or in any way abnormal. Never disassemble the unit or attempt to remove the battery as that could cause leakage of alkaline solution or other electrolytic substances. Never expose the battery to any liquid. Never expose the battery to excessive heat such as direct light or fire. Always keep the battery out of the reach of infants and small children.

•BATTERY DISPOSAL

Please do not attempt to change the battery yourself. If the battery has died, you should follow the disposal instructions listed here. Never dispose of used batteries/electronics with ordinary solid wastes. Always dispose of used batteries/electronics in accordance with the prevailing community regulations that apply to the disposal of batteries/electronics. If there are no local regulations concerning battery/electronics disposal, please dispose of the device in a waste bin for electronic devices. Many electronics retailers now recycle batteries and other electronic components at no charge.

•FEATURES

[Chargeable Battery] Chargeable battery included; environmental, economical and functional.
[Audio input] A stereo audio input jack; enable the sound source connection with computers, digital media players, mobile phones and other audio-visual products
[MP3 Player] Enable directly playing MP3 files in TF memory card and U Disk.
[Intellective charging] Wiring with USB jack, enables charging by connecting with USB jack of computer or cell phone charger.

•PAIRING BLUETOOTH & PLAYING AUDIO

1.Turn On/OFF the speaker
Rotate the POWER KNOB from OFF position to ON position to turn on the unit
Rotate to OFF position to turn off the unit.
1.Turn ON the speaker. Rotate the volume knob to your favorite sound level.

2.⏮/-“Button: Short press for last song.

3.⏭/+“Button: Short press for Next song.

4.⏸“Button: Short press for Play/Pause.Long press to TWS.

5.“M“Button:Mode shift button.Long press to switch model,short press to switch light model.

6.DC 5V”port: Power input + earphone jack for listening to music or radio channel. Power input jack with USB wiring, enables charging by connecting with USB jack of computer or cell phone charger.

•OTHER IMPORTANT SAFETY INFORMATION

Disposal of old electronic & electronic equipment (Applicable in the European Union and other European Counties with separate collection systems) The trash can symbol (seen on the bottom) on the production indicates that this product shall not be treated as household waste. Instead it shall be handed over to the applicable collection point for recycling of electronic equipment. By ensuring this product is disposed of correctly, you will help prevent potential negative consequences for the environment and human health, which could otherwise be caused by inappropriate waste handling. For more detailed information about this product, please contact your local household waste disposal service or the shop where you purchased this item.



7.“TF”port: Insert TF card for MP3 music playing.

8.“AUX”port:Audio input jack,enable the sound source connection with computers, digital media players.

9.“USB”port:Insert U disk for MP3 music playing.

10.“TREBLE”port: Rotate to the right to increase microphone mix.

11.“BASS”port: Rotate to the right to add microphone volume.

Charging Method
One end of wiring be inserted in DC5V, another end with USB jack be inserted in USB jack of PC or other charging with standard 5V 500mA jack.

Low Power
When low power occurs and system been power off automatically, please charge in time; not use this product for a long period, please charge at least once a month so as to lengthen battery's life.

How to Achieve TWS Function(Requires 2 HYPE)

Turn on both HYPE, make sure neither HYPE are connected to any device. Pick one of the HYPE and long press POWER/PAUSE button. A“beep” sound will be heard. Now both speakers are in TWS mode. Open your device and choose “IJOY HYPE” to pair two speakers.

•ONE (1) YEAR LIMITED WARRANTY

Our product is warranted for a One (1) year limited warranty from the date of purchase. The warranty is provided on all material defects and workmanship. Guarantee of 12 months does not apply to decrease in the accumulator's effective capacity caused by its use or age. Effective capacity gradually decreases depending on the method of use of the accumulator. **WE RESERVE THE RIGHT TO CHANGE TECHNICAL SPECIFICATIONS.** For more information please visit, www.goijoy.com

TIP: Must use a formal manufactured certified charger. If the power bank has not been used for a significant amount of time, please make sure to charge before using the product.

QUEST USA CORP.
495 Flatbush Ave Brooklyn, NY 11225

© GOIJOY & IJOY are registered trademarks of QUEST USA CORP. All other trademarks and trade names are property of their respective owners. Designed by GOIJOY & IJOY in New York. All rights reserved QUEST USA CORP.

One (1) year limited warranty. To activate your product warranty go to our website www.goijoy.com & register this product.

Made in China.

