

EXHIBIT 11  
SPURIOUS EMISSION AT ANTENNA TERMINALS

70-1 (C)

HP

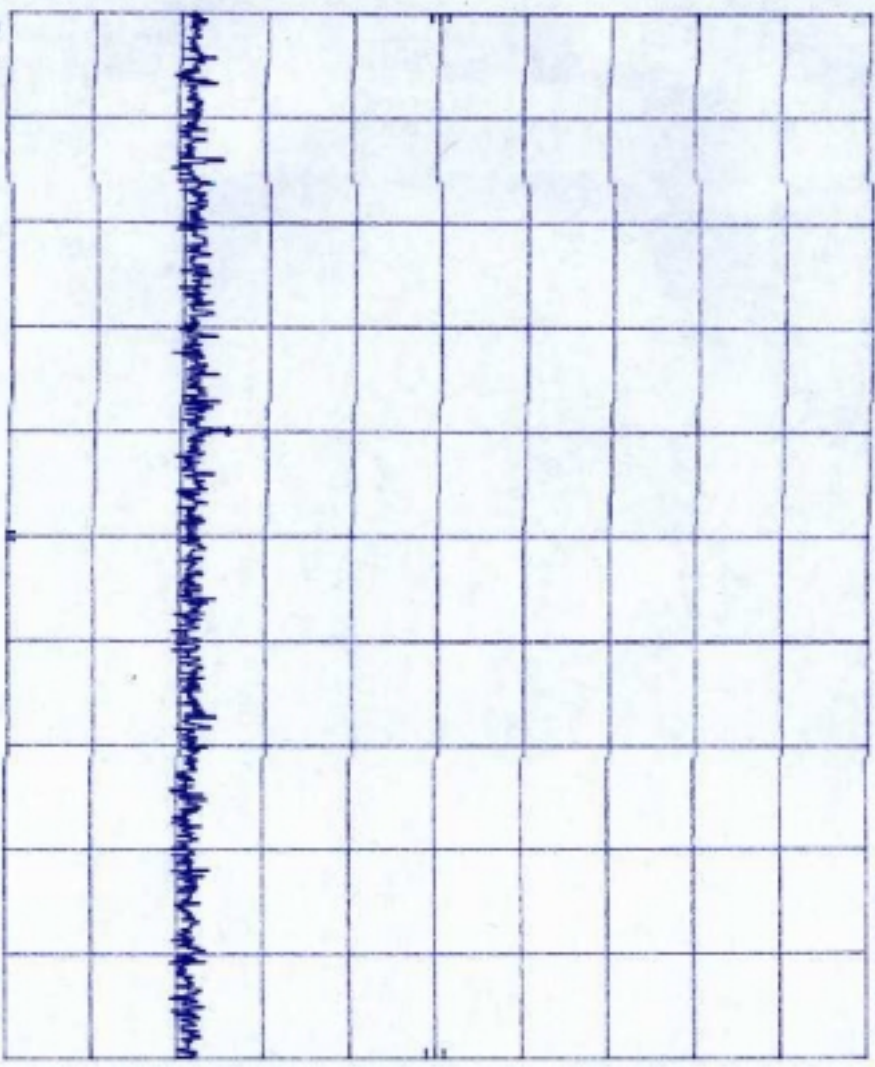
REF 24.6 dBm

ATTEN 20 dB

MARK 40.50 MHz  
-50.00 dBm

10 dB/

OFFSET  
22.6  
dB



START 1.0 MHz  
RES BW 30 kHz  
VBW 30 kHz  
STOP 100.0 MHz  
SWP 297 mhz

MKR 277.3 MHz  
-49.68 dBm

5

ATTEN 20 DB

OFFSET



STOP 1.000 GHz

SWP 2.70 sec

10-3 (L)

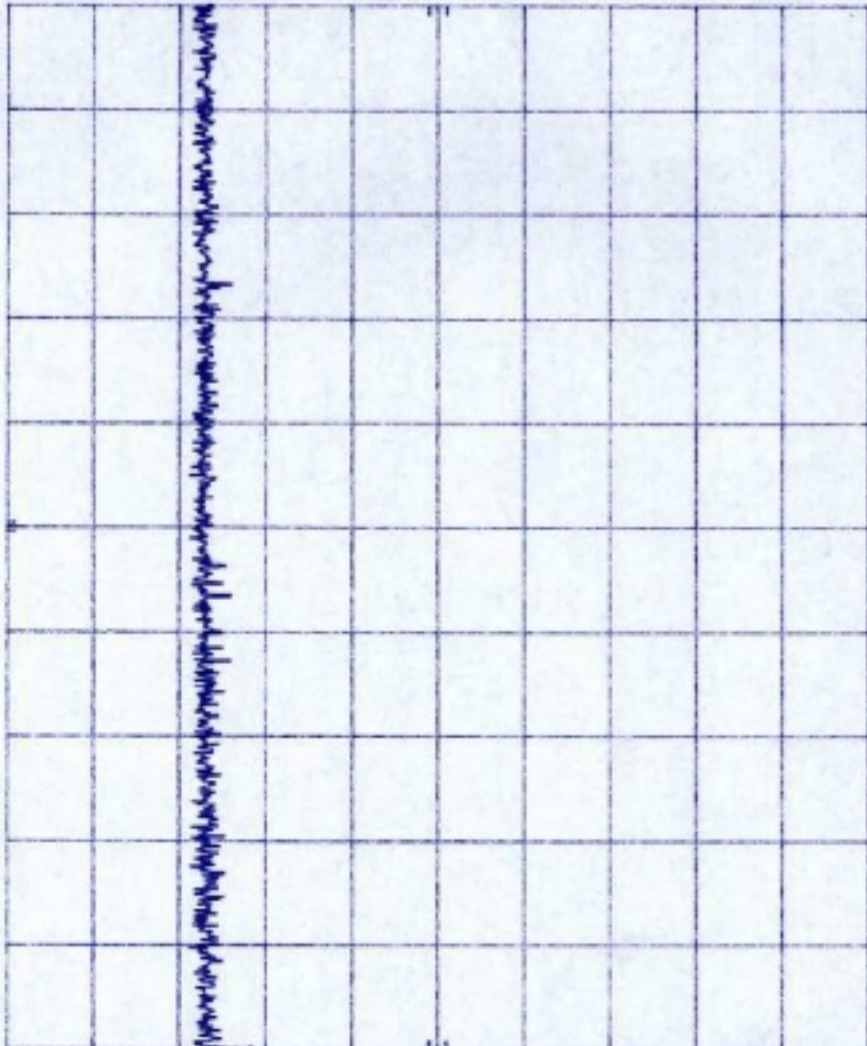
10

10 dB/

OFFSET  
22.6  
dB

REF 24.6 dBm ATTN 20 dB

MARK 1.850 0 GHz  
-47.10 dBm



START 1.800 GHz  
RES BW 30 kHz

VBW 30 kHz

STOP 1.850 GHz  
SWP 2.55

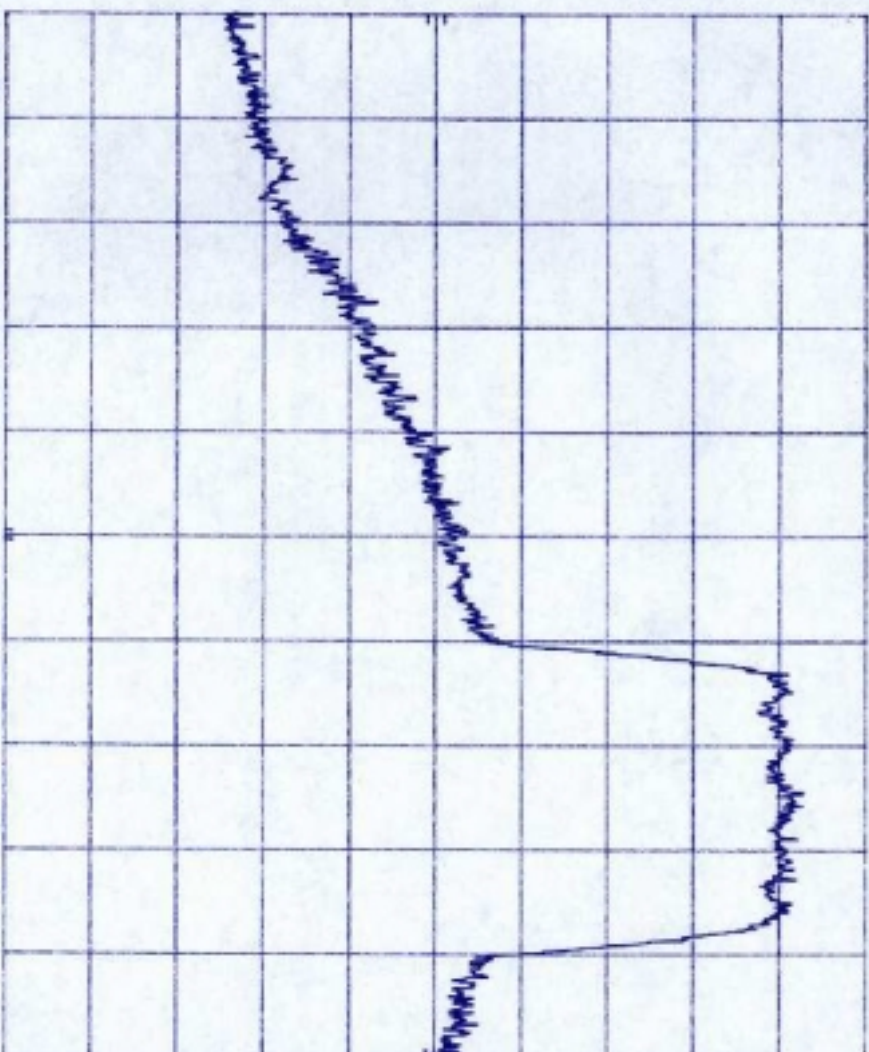
70-4 (2)

hp  
10 dB/

REF 24.6 dBm ATTN 20 dB

MKR 1.849 975 GHz  
-22.10 dBm

OFFSET  
22.6  
dB



CENTER 1.850 00 GHz  
RES BW 30 kHz  
SPAN 5.00 MHz  
SWP 20.0 mhz

10-5(L)

hp

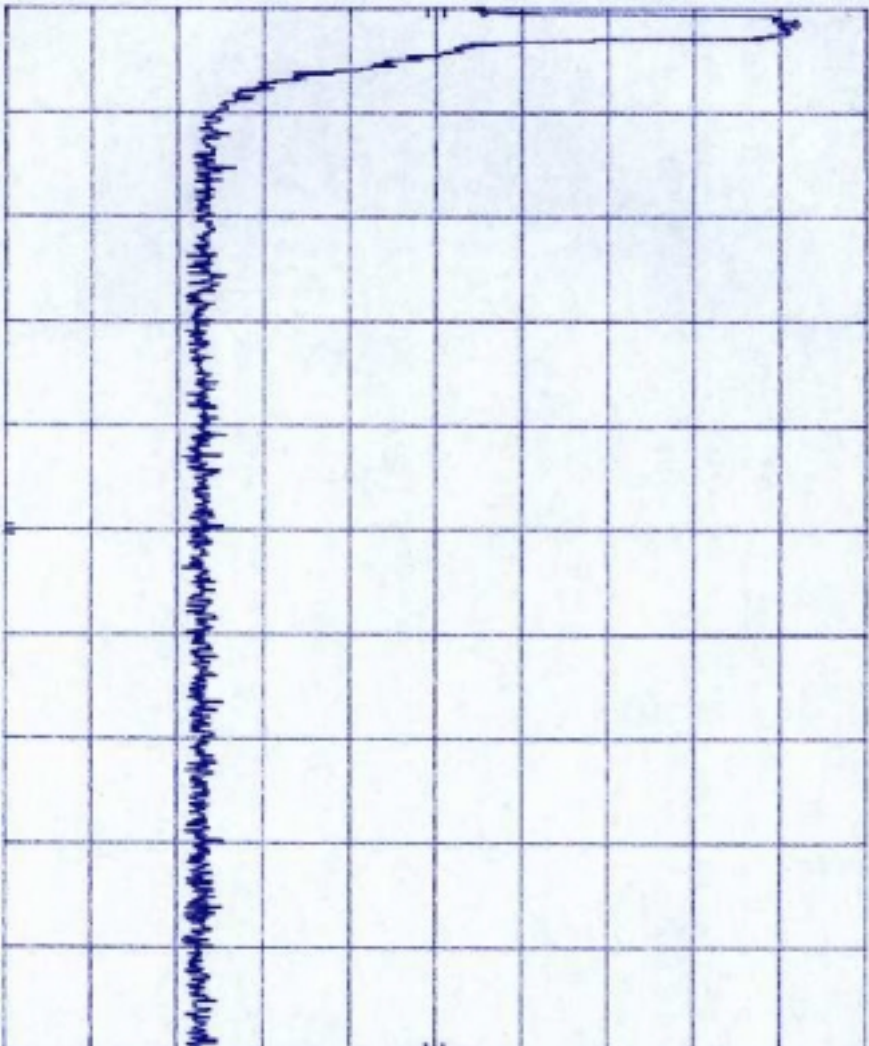
REF 24.6 dBm

ATTEN 20 dB

MKR Δ-840 kHz  
-36.30 dB

10 dB/

OFFSET  
22.6  
dB



START 1.850 0 GHz  
RES BW 30 kHz

VBW 30 kHz

STOP 1.910 0 GHz  
SMP 160 msec

10-6(6)

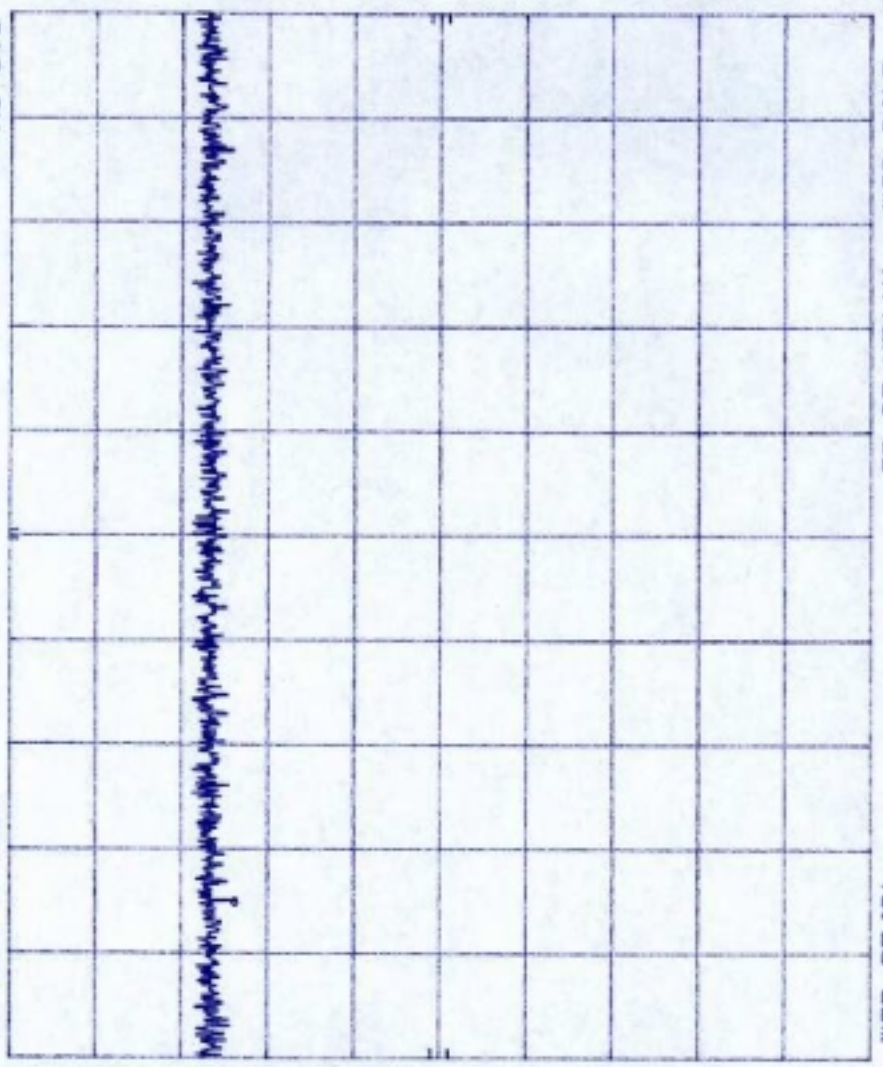
hp

REF 24.6 dBm ATTEN 20 dB

MKR 2.4115 GHz  
-49.20 dBm

10 dB/

OFFSET  
22.6  
dB



START 1.810 GHz STOP 2.500 GHz  
RES BW 30 kHz VBW 30 kHz SWP 1.77 sec

10-7(4)

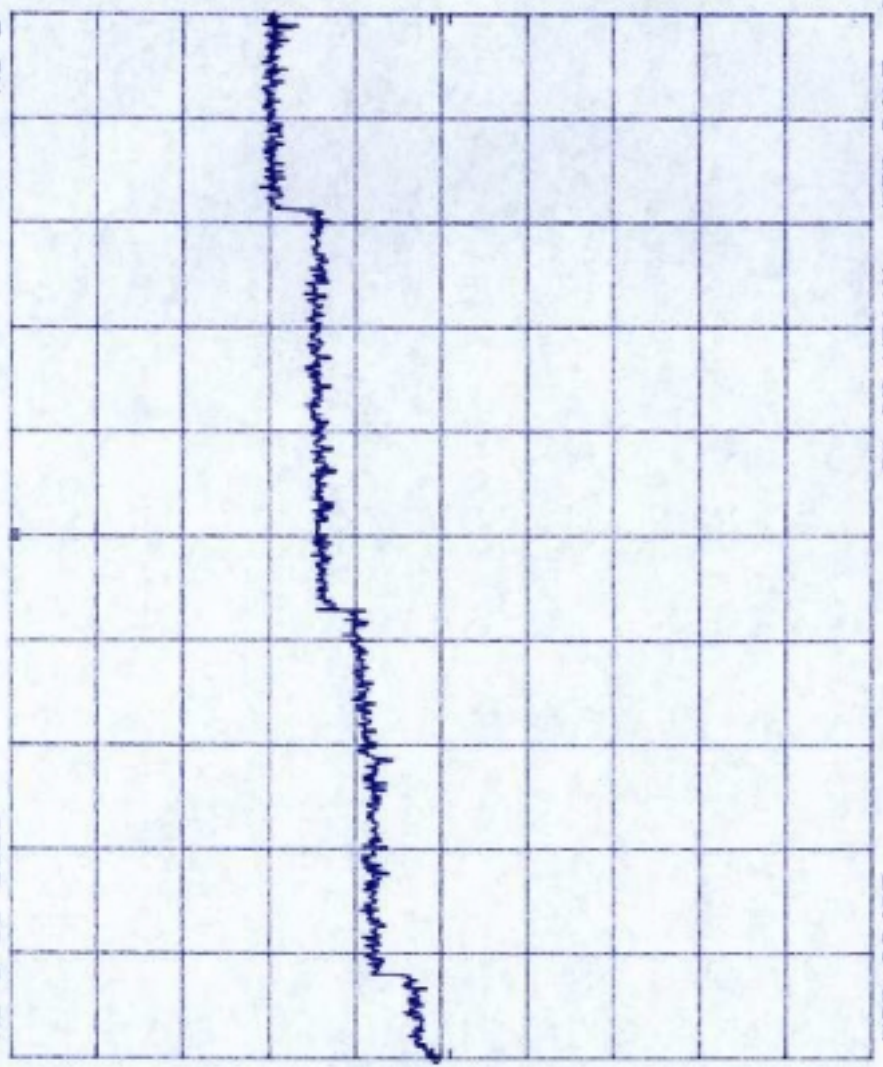
*hp*

10 dB/

OFFSET  
22.6  
dB

REF 24.6 dBm    ATTEN 20 dB

MKR 20.00 GHz  
-26.00 dBm



START 2.5 GHz    RES BW 100 kHz    VBW 100 kHz    STOP 20.0 GHz  
SWP 5.25 sec

10-1 (m)

HP REF 24.6 dBm  
10 dB/

OFFSET  
22.6  
dB

MKR 69.90 MHz  
-42.90 dBm



START 1.0 MHz  
RES BW 100 kHz  
VBW 100 kHz  
STOP 100.0 MHz  
SWP 29.7 mhz

(9-2 (M)

HP REF 24.6 dBm ATTEN 20 dB

MKR 384.4 MHz  
-43.20 dBm

10 dB/

OFFSET  
22.6  
dB



START 100 MHz      RES BW 100 KHz      VBW 100 KHz      STOP 1.000 GHz  
SWP 270 msec

10-3 (M)

10

10 dB/

OFFSET  
22.6  
dB

REF 24.6 dBm ATTEN 20 dB

MKR 1.061 2 GHz  
-42.20 dBm



START 1.000 GHz STOP 1.850 GHz  
RES BW 100 kHz VBW 100 kHz SWP 255 mhz

10-4 (M)

hp

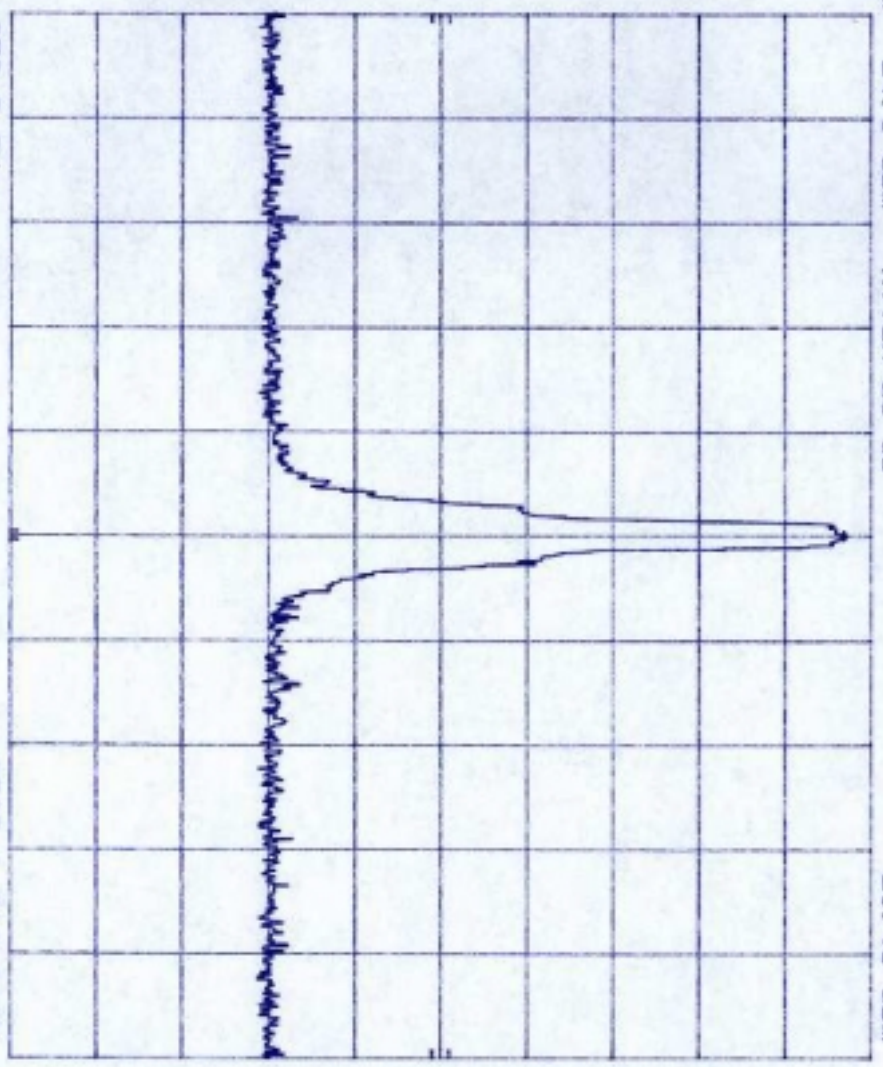
REF 24.6 dBm ATTEN 20 dB

MKR 1.879 94 GHz  
21.40 dBm

10 dB/

OFFSET  
22.6  
dB

START 1.850 0 GHz RES BW 100 kHz VBW 100 kHz STOP 1.910 0 GHz  
SWP 20.0 mseg

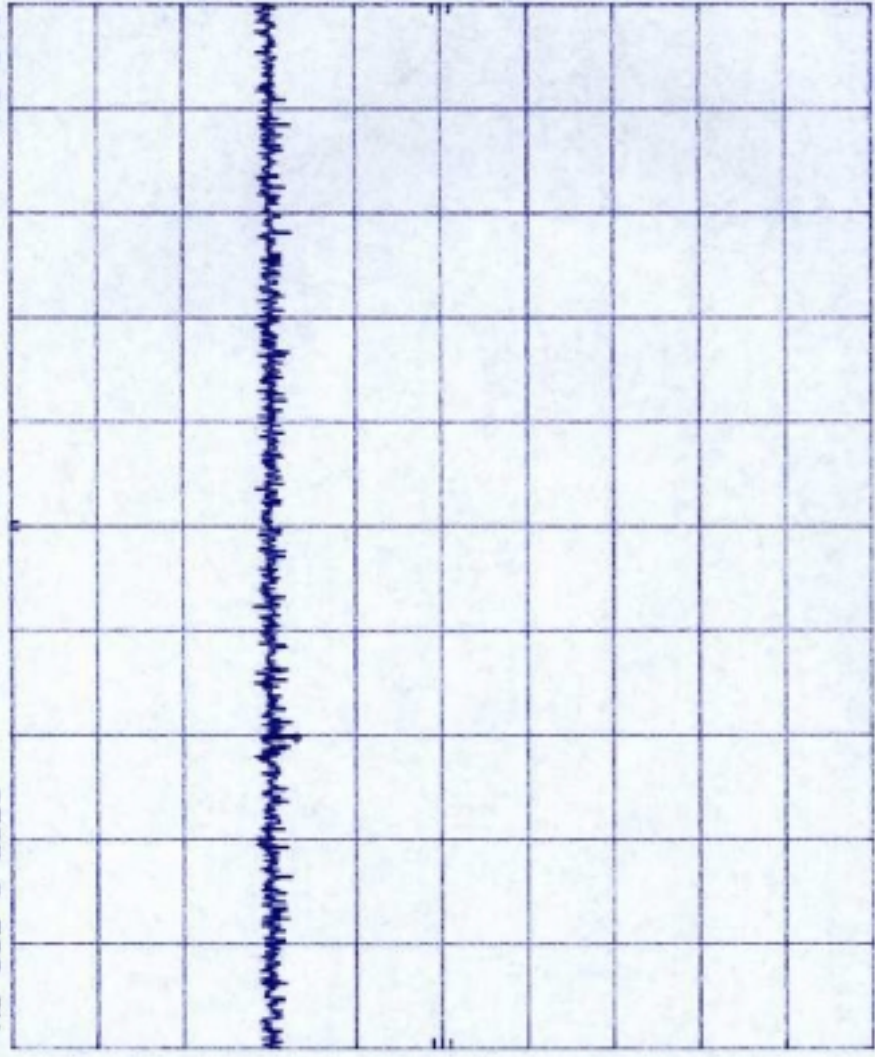


10-5 (01)

h<sub>2</sub> REF 24.6 dBm ATTN 20 dB

MKR 2.324 2 GHz  
-42.30 dBm

OFFSET  
22.6  
dB



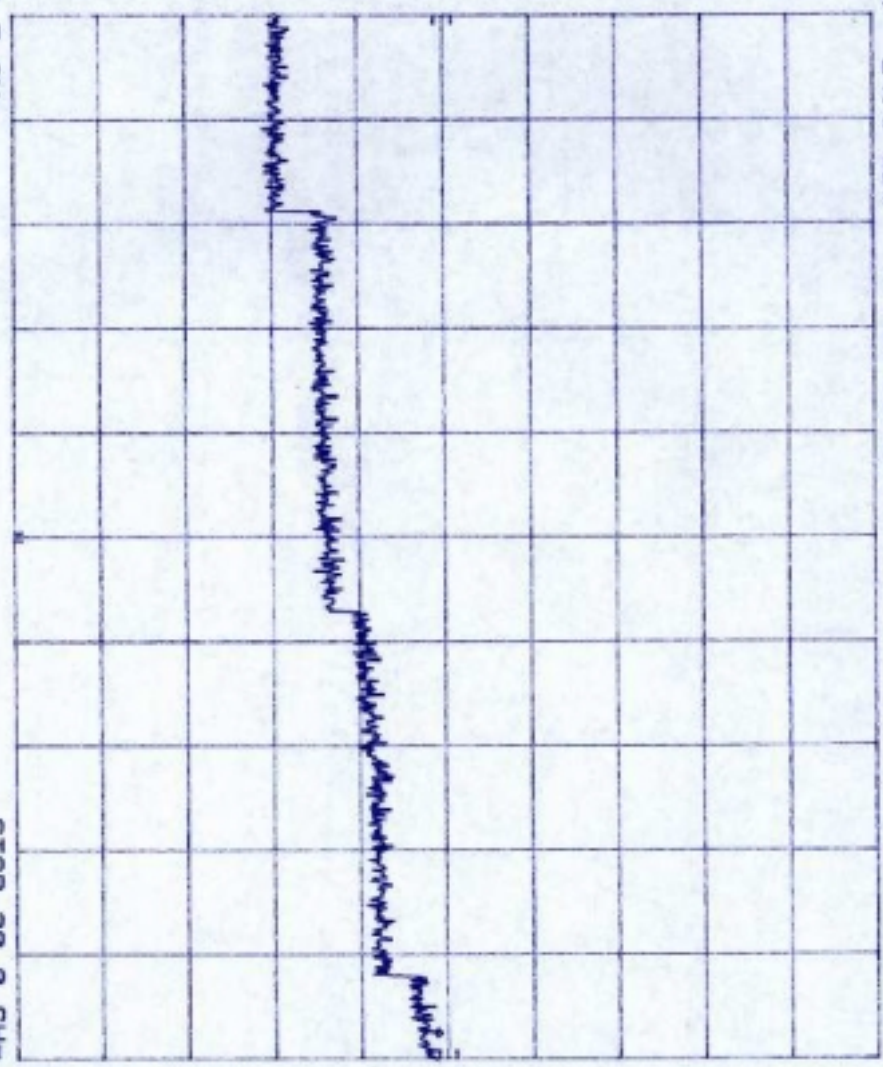
START 1.910 GHz  
RES BW 100 kHz  
VBW 100 kHz  
STOP 2.500 GHz  
SWP 177 mhz

10-8 (10)

$f_D$  REF 24.5 dBm ATTEN 20 dB MKR 19.55 GHz  
-26.50 dBm

10 dB/

OFFSET  
22.6  
dB



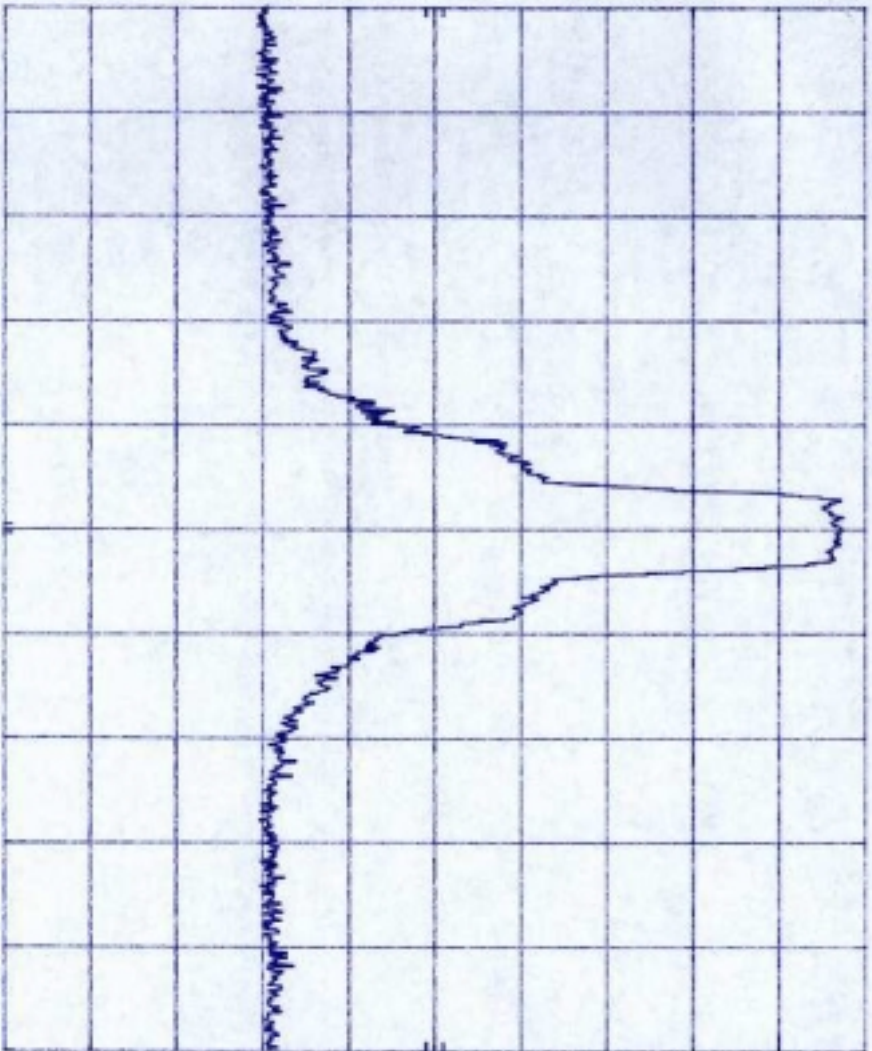
START 2.5 GHz STOP 20.0 GHz  
RES BW 100 kHz VBW 100 kHz SWP 5.25 sec

10-7(M)

HP REF 24.6 dBm ATTEN 20 dB

10 dB/

OFFSET  
22.6  
dB



CENTER 1.680 0 GHz SPAN 20.0 MHz  
RES BW 100 kHz VBW 100 kHz SWP 20.0 mhz

10-1 (14)

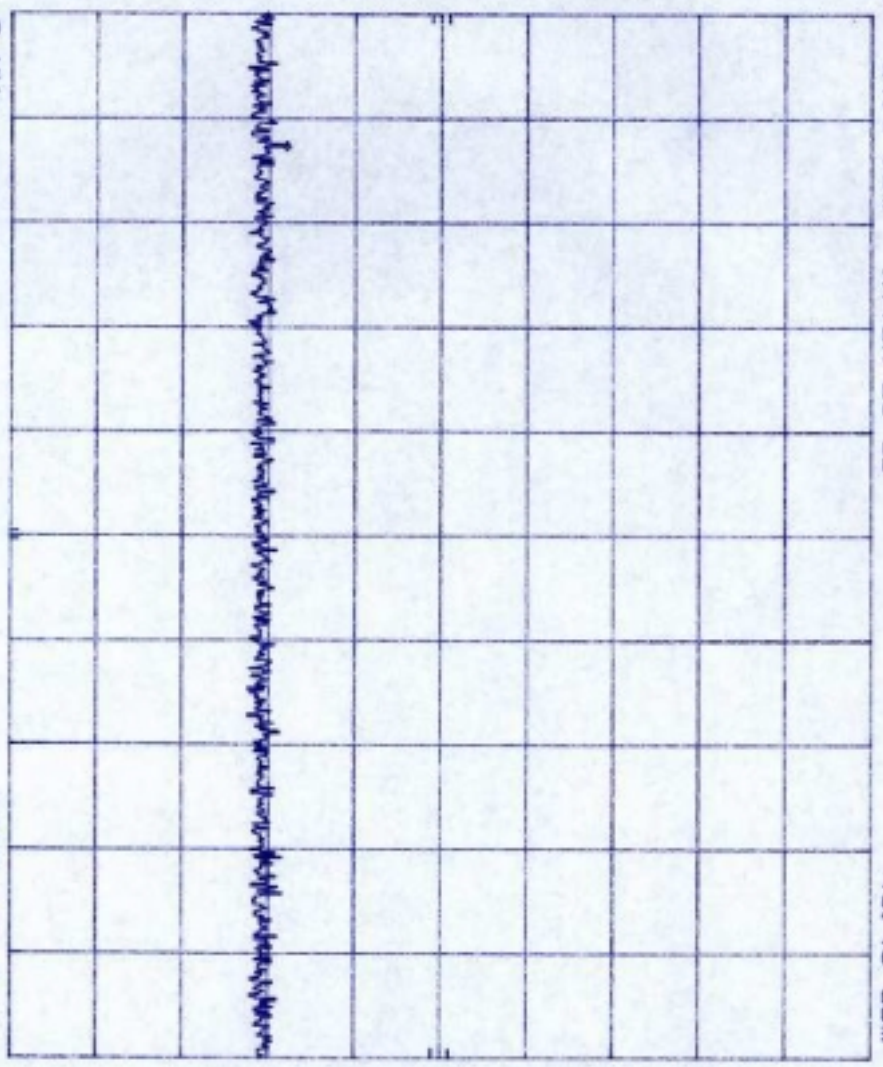
hp

REF 24.6 dBm ATTEN 20 dB

MKR 13.47 MHz  
-43.40 dBm

10 dB/

OFFSET  
22.6  
dB



START 1.0 MHz  
RES BW 100 kHz  
VBW 100 kHz  
STOP 100.0 MHz  
SWP 29.7 msec

10-2 (H)

hp

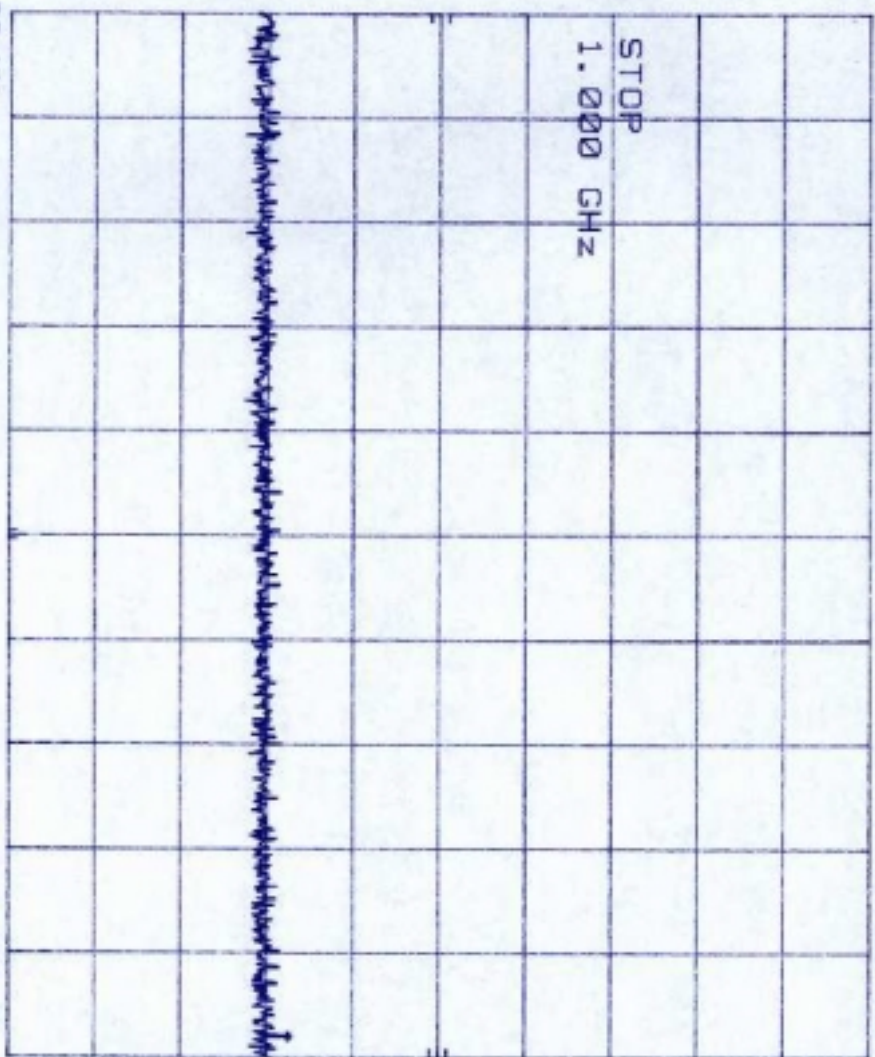
REF 24.6 dBm ATTEN 20 dB

MKR 981.1 MHz  
-42.80 dBm

10 dB/

OFFSET  
22.6  
dB

STOP  
1.000 GHz



START 100 MHz  
RES BW 100 kHz  
VBW 100 kHz  
STOP 1.000 GHz  
SWP 270 msec

10-3 (H)

HP

REF 24.6 dBm

ATTEN 20 dB

MKR 1.598 4 GHz

-42.70 dBm

10 dB/

OFFSET

22.6

dB



START 1.000 GHz

RES BW 100 kHz

VBW 100 kHz

STOP 1.850 GHz

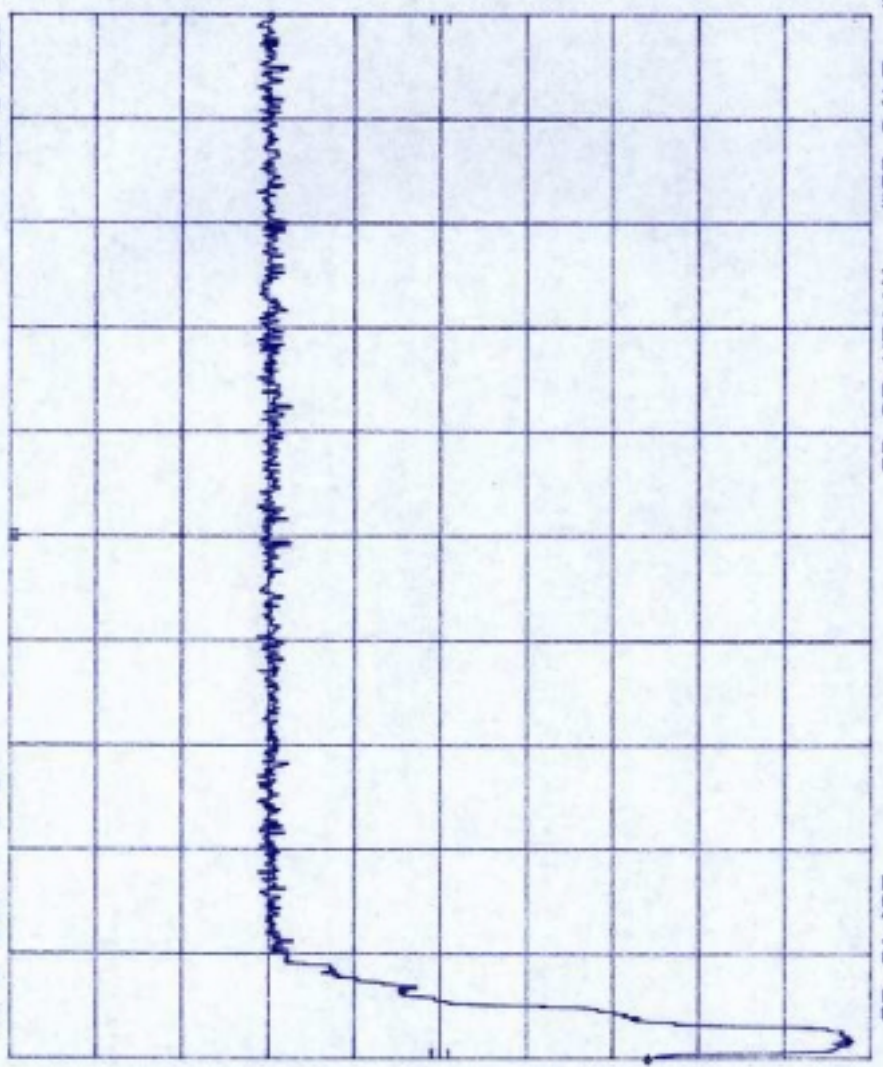
SWP 255 msec

10-414

HP REF 24.6 dBm ATTEN 20 dB  
10 dB/

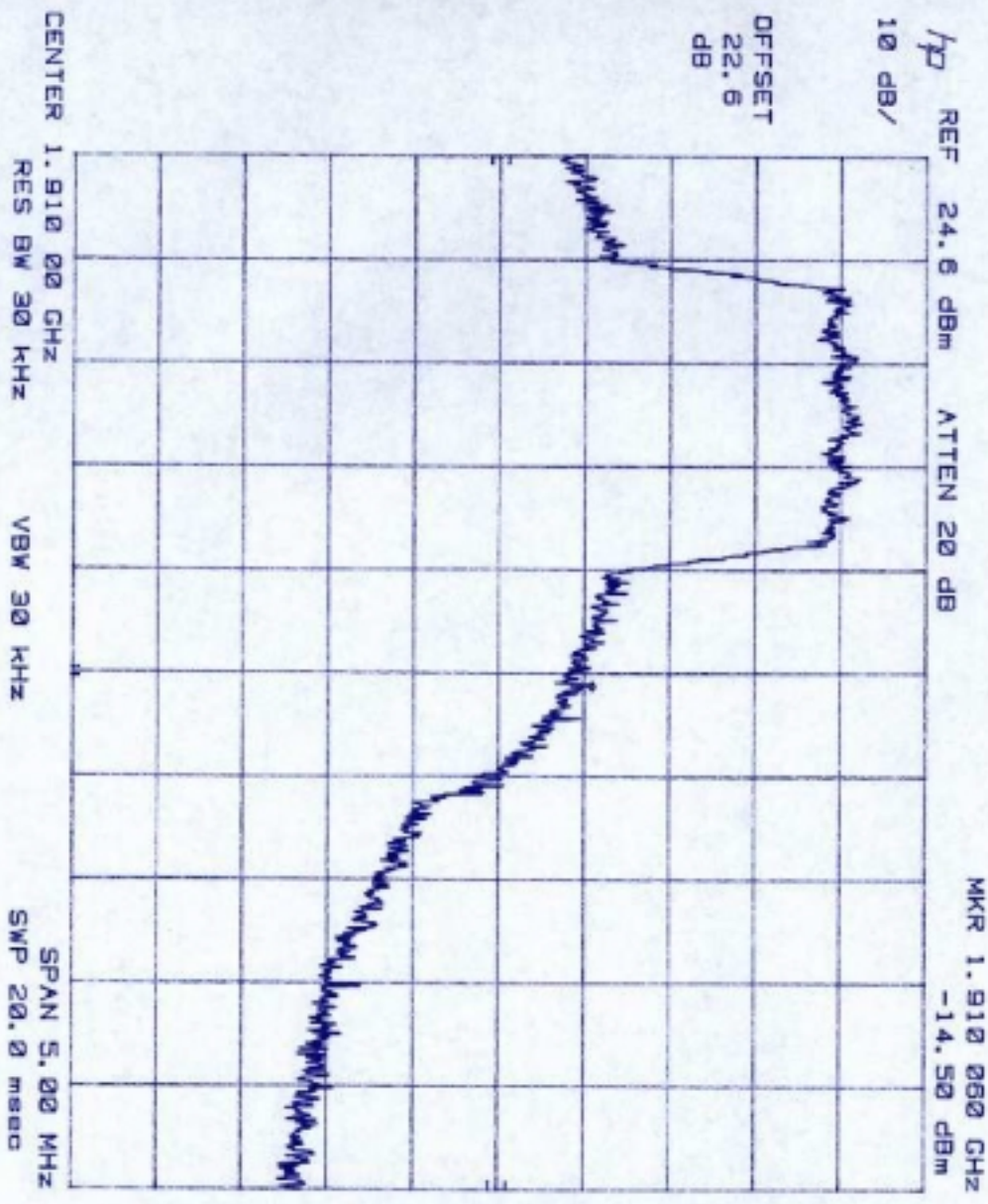
MKR  $\Delta$  1.08 MHz  
-23.40 dB

OFFSET  
22.6  
dB



START 1.850 0 GHz RES BW 100 kHz VBW 100 kHz STOP 1.910 0 GHz SWP 20.0 mhz

10-5(H)



18-6 (H)

MR 2.180 2 GHz

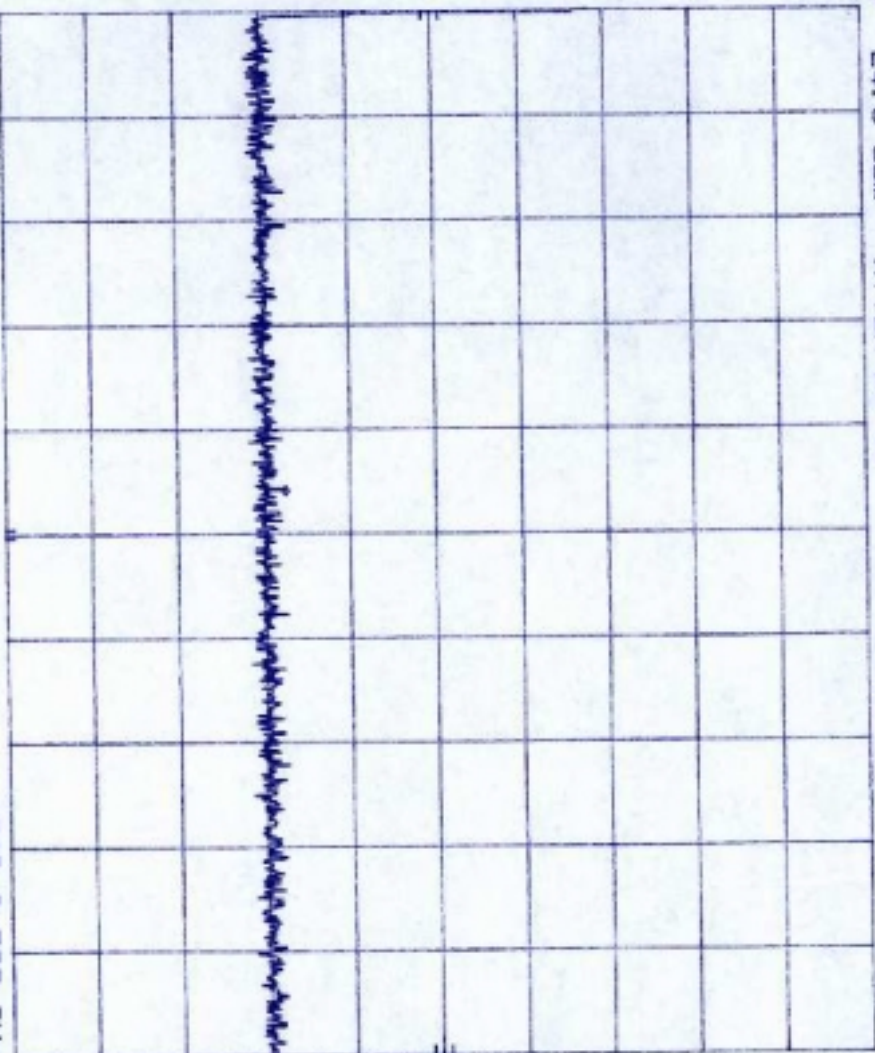
-42.90 dBm

HP

REF 24.6 dBm ATTN 20 dB

10 dB/

OFFSET  
22.6  
dB



START 1.910 GHz RES BW 100 kHz VBW 100 kHz STOP 2.500 GHz SWP 177 msec

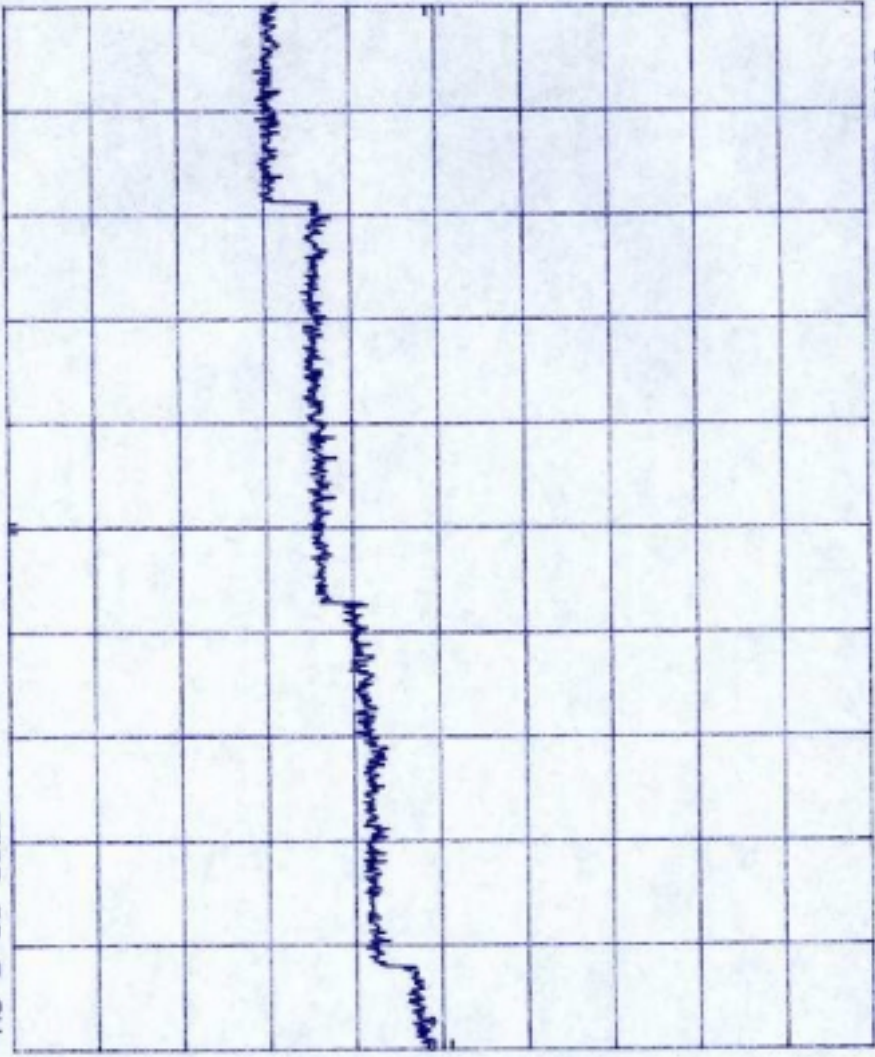
10-7 (H)

MR 19.51 GHz  
-26.70 dBm

REF 24.5 dBm ATTN 20 dB

10 dB/

OFFSET  
22.6  
dB



START 2.5 GHz STOP 20.0 GHz  
RES BW 100 kHz VBW 100 kHz SWP 5.25 sec