

## Uninstall the Gaming Mouse Software

Please find the Gaming Mouse from the windows program list, and click the "uninstall" to uninstall the gaming software from the PC.

FCC caution:

Federal Communications Commission (FCC) Statement

15.21

You are cautioned that changes or modifications not expressly approved by the part responsible for compliance could void the user's authority to operate the equipment.

15.105(b)

This equipment has been tested and found to comply with the limits for a Class B digital device, pursuant to part 15 of the FCC rules. These limits are designed to provide reasonable protection against harmful interference in a residential installation. This equipment generates, uses and can radiate radio frequency energy and, if not installed and used in accordance with the instructions, may cause harmful interference to radio communications. However, there is no guarantee that interference will not occur in a particular installation. If this equipment does cause harmful interference to radio or television reception, which can be determined by turning the equipment off and on, the user is encouraged to try to correct the interference by one or more of the following measures:

- Reorient or relocate the receiving antenna.
- Increase the separation between the equipment and receiver.
- Connect the equipment into an outlet on a circuit different from that to which the receiver is connected.
- Consult the dealer or an experienced radio/TV technician for help.

This device complies with Part 15 of the FCC Rules. Operation is subject to the following two conditions:

- 1) this device may not cause harmful interference and
- 2) this device must accept any interference received, including interference that may cause undesired operation of the device.

# TP001LR+C75 2.4GHz Wireless Touch Pad



## User's Guide

## Introduction

Congratulations on your purchase of the most innovative touch pad. The touch pad has 19 touch gesture functions, cursor movement, left/right click as well as an unique function for you to edit your own quick access function list. It is designed to make you more productive and more comfortable.

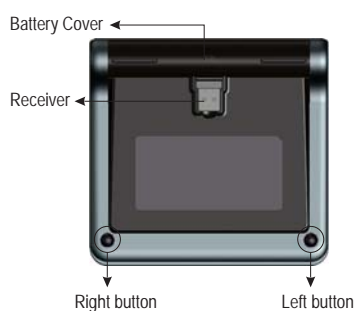
## Features

- 2.4G Hz (distance 6~8m), 34 Channels 2<sup>24</sup> ID
- Using state-of-art touch technology.
- Stylish, modern and comfortable shape
- Plug and Play! Auto-Link ID! ( No need to set the channel ID )
- Storable Super mini Receiver
- Unique Smart Quick Access to websites, programs or folders ( Driver should be installed first.)
- Smooth scrolling and zoom functions ( Driver should be installed first)
- Support Windows 8 Touch gesture functions.
- Standard Mouse and 19 gesture functions.

## System Requirements

- Windows XP/Vista/7/8. [Not available for Windows RT]
- Windows 8 gesture functions can be available on Windows 8 only.
- USB Port

### Touch Pad



LED indicator



### Receiver

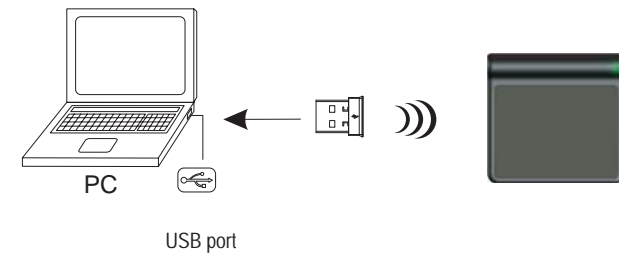


## Insert the batteries

- Remove the battery compartment cover on the bottom case of the touch pad.
- Fit in the batteries accordingly to the diagram indicated in the battery cabinet.
- Close the battery compartments cover properly.
- Push the power on/off button to turn on the touch pad.
- The Low Power LED on the wheel bar will be on for 6 seconds if the touch pad power is on.

## Communication: The mouse & the receiver

1. Power on your PC.
2. Connect the receiver to USB port on PC.



3. Make sure the touch pad Power is ON.  
**Power On :** Push once the power On/Off button to turn on. The LED indicator will be on for 6 seconds.  
**Power Off :** Keep pressing the power On/Off button for 3 seconds to turn off. The LED indicator will be on for the 3 seconds.



4. Operate the touch pad, and cursor's movement is mapping touch pad finger movement. Now the touch pad and the receiver is auto-linked successfully.

## Gesture function



### Left Button Function:

To click on the touch pad is to implement Left Button Function.



### Right Button Function:

To click on the lower right corner of the touch pad is to implement Right Button Function.



### Cursor control:

Slide one finger on the touch pad to move the cursor.

## Windows 8 gesture functions (available only on Windows 8, Not available for Windows RT)

1. Swipe from the left edge to cycle through open applications.






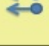

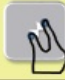

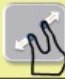






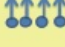


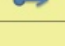


2. Swipe from the Top edge to display the applications bar.



3. Swipe from the right edge to display the charms bar.



Item	Finger	Function	Gesture	Operation	Windows X2 32Bit	Windows Vista 32 / 64 Bit	Windows 7 32 / 64 Bit	Windows 8 32 / 64 Bit	Remark
1	One Finger	Left Button		To click on the touch pad is to implement Left Button Function.	√	√	√	√	
		Right Button		To click on the lower right corner of the touch pad is to implement Right Button Function.	√	√	√	√	
		Cursor Control		Swipe on the touch pad to control the cursor movement.	√	√	√	√	
		Change Application Windows 8 OS only		Swipe from the left edge to switch through open applications.				√	
		Open Application Bar Windows 8 OS only		Swipe from the top edge to open the application bar.				√	
		Open charms bar Windows 8 OS only		Swipe from the right edge to open the charms bar.				√	

Item	Finger	Function	Gesture	說明 Operation	Windows XP 32Bit	Windows Vista 32 / 64 Bit	Windows 7 32 / 64 Bit	Windows 8 32 / 64 Bit	Remark
2	Two Finger 	Scrolling Up		Sliding upward on the touch pad to scroll up	V	V	V	V	Driver installation is necessary for smooth zooming.
		Scrolling Down		Sliding downward on the touch pad to scroll down	V	V	V	V	Driver installation is necessary for smooth zooming.
		Tilt Left		Sliding to the left on the touch pad to scroll to the left.	V	V	V	V	Driver installation is necessary for smooth zooming.
		Tilt Right		Sliding to the right on the touch pad to scroll to the right.	V	V	V	V	Driver installation is necessary for smooth zooming.
		Zoom Out		Pinch to zoom out			V	V	Driver installation is necessary for smooth zooming.
		Zoom In		Move 2 fingers apart to zoom in.			V	V	Driver installation is necessary for smooth zooming.
3	Three Finger 	Windows Key		Swipe up to return to Start	V	V	V	V	
		Desktop		Swipe down to get to Desktop	V	V	V	V	
		Forward		Swipe to the left to turn to Internet Explorer next page	V	V	V	V	
		Backward		Swipe to the right to turn to Internet Explorer previous page	V	V	V	V	
4	Four Finger 	Vol "+"		Swipe up to turn up the volume	V	V	V	V	
		Vol "-"		Swipe down to turn down the volume	V	V	V	V	
		Prev		Swipe to the left to switch to previous track	V	V	V	V	
		Next		Swipe to the right to switch to next track	V	V	V	V	
		Open Quick Access Functions		Stretch four fingers on the touch pad to open the Quick Access Functions	V	V	V	V	Driver installation is necessary to have this function.
		Close Quick Access Functions		Shrink four fingers on the touch pad to close the Quick Access Functions	V	V	V	V	Driver installation is necessary to have this function.

## Hardware Installation

Connect the Mouse to the USB port.

※ Users need to wait around 10~15 seconds for moving the cursor at the first time usage.

## Software Installation

The CD included in the package contains gaming software. (The Tilt Wheel function will be activated only after the gaming software is installed.)

### A. Software Installation Instruction

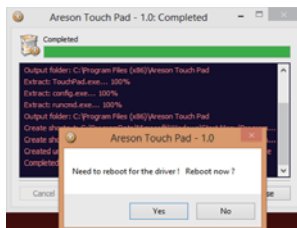
For gaming button settings and dpi adjustment, please install the gaming software in the accompanied CD.



Please "Close" the window when the installation has been completed successfully.



After the installation window is closed, another window of "Need to reboot for the driver ! Reboot Now ?" Please click "Yes".



**Note:** Some functions of the driver could not work if the computer is not rebooted.

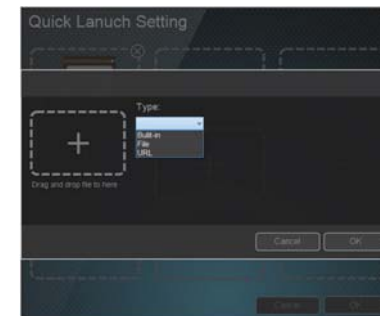
### B. Settings Instruction

The Quick Launch Setting window will pop up after the driver installation is finished. There are 9 quick access functions for you to set up.



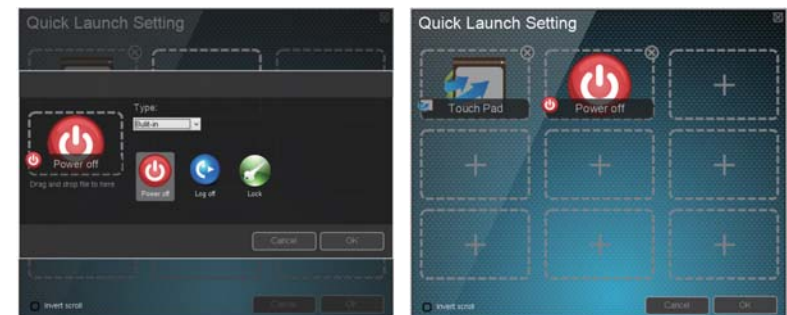
Move the cursor to any one of the blank options. Tap to start to set up its function.

There are 3 types of functions to set up : (1) Built-in (2) File (3) URL.



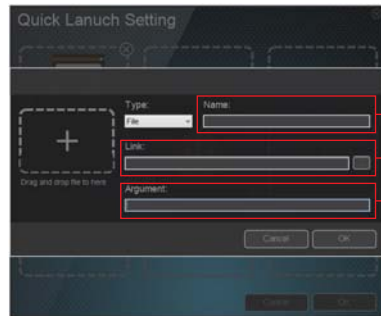
#### Built-in

Tap "Built-in" to show the built-in functions. Choose one function and then tap "OK" to get back the Quick Launch Setting windows. Tap "OK" to save the function setting.



## File

Tap "File" to enter the file setting window.

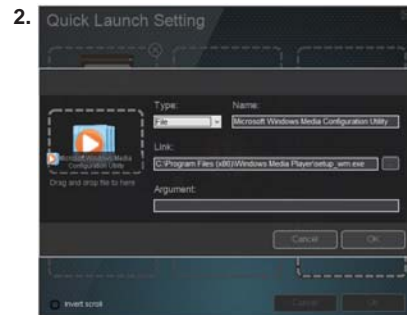
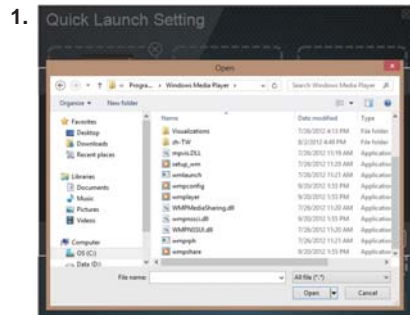


Define the file or folder name here

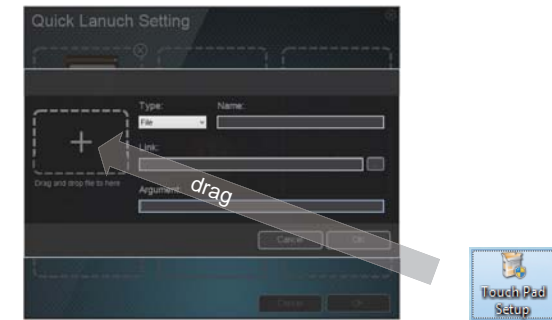
Enter the file or folder route here.

You may enter program parameters here when necessary.

You may also tap the cell to the right side of the link line to open the computer folder. Choose one file as your quick access file. Tap "OK" to save the setting.

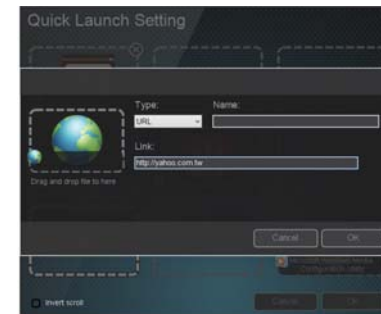


\*\* Files, programs and folders can also be dragged into the Quick Launch Setting as quick access files, programs and folders. Follow the previous steps of gesture recording.



## URL

Tap "URL" to enter the URL setting window. Enter a website and define its name. Tap "OK" to get back to the Quick Launch Setting window. Tap "OK" to save the setting.



Quick Access Functions Operation:

Stretch 4 fingers on the touch pad to open the Quick Access Functions.



Move the cursor to the function and then tap twice on the touch pad to implement the function.



Invert scroll direction: Check this option and click OK to invert the scroll direction.