



We love that you are rocking JLab Audio!  
We take pride in our products and fully stand behind them.

JLAB



#### YOUR WARRANTY

All warranty claims are subject to JLab Audio authorization and at our sole discretion. Retain your proof of purchase to ensure warranty coverage.



#### CONTACT US

Reach out to us at [support@jlabaudio.com](mailto:support@jlabaudio.com) or visit [jlabaudio.com/contact](https://jlabaudio.com/contact)

### REGISTER TODAY

[jlabaudio.com/register](https://jlabaudio.com/register)

Product updates | How-to tips  
FAQs & more

Name: JBuds Air Executive True Wireless Earbuds

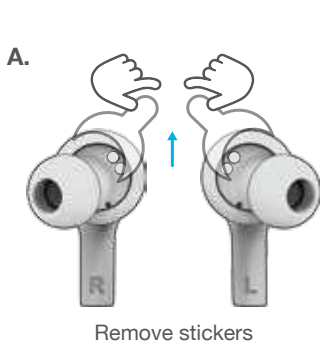
Model Name: JBuds Air Executive

PEAG, LLC dba JLab Audio

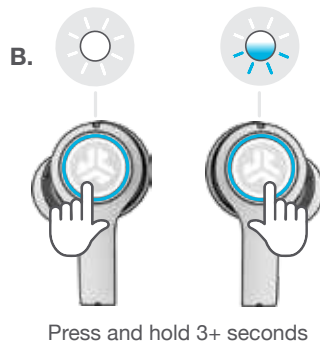
## FIRST TIME SETUP

### 1 AUTO-CONNECTING EARBUDS

- A.** Take earbuds out of the charging case and remove stickers.  
**B.** Press and hold both touch sensors 3+ seconds to turn ON. Left earbud turns **solid white** and Right earbud **blinks blue/white** indicating ready to pair to your device.



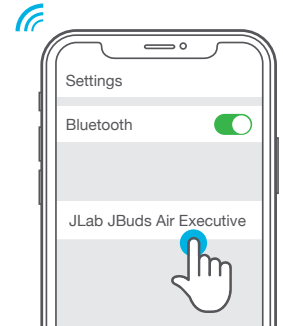
Remove stickers



Press and hold 3+ seconds

### 2 CONNECTING TO BLUETOOTH

- Select "JLab JBuds Air Executive" in your device settings. Voice prompt "Bluetooth connected" followed by **solid white lights** will indicate you are connected.

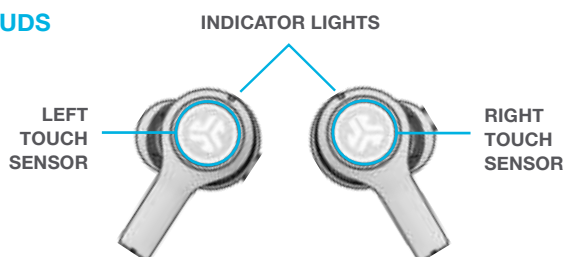


### ADDING NEW / ADDITIONAL BLUETOOTH DEVICES:

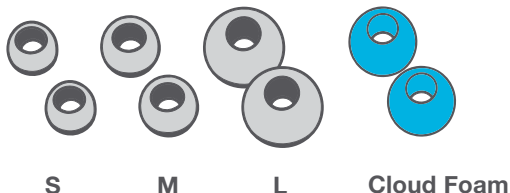
**Turn OFF Bluetooth** from any previously connected device. **Turn ON Bluetooth** from new device. Take earbuds out of the case. Earbuds will automatically enter Bluetooth Pairing. Select "JLab JBuds Air Executive" in device settings to connect.

## IN THE BOX

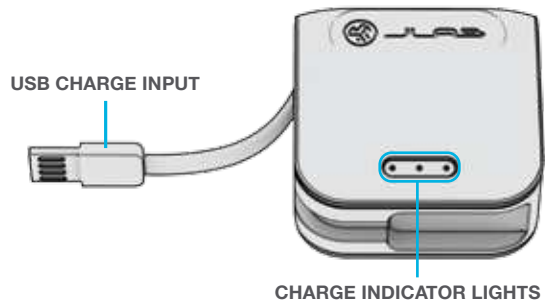
### EARBUDS



### EARTIPS



### CHARGING CASE



## BUTTON FUNCTIONS

LEFT  
EARBUD



RIGHT  
EARBUD



**VOLUME DOWN:** Single tap

**SIRI (iOS) or "OK GOOGLE" (ANDROID):** Double tap

**TRACK BACK:** Press & hold 1+ sec

**EQ CHANGE:**

Triple tap

(JBuds Air Exec will cycle 3 EQ settings)

**POWER ON:** Press & hold 3+ sec

**VOLUME UP:** Single tap

**PLAY / PAUSE:** Double tap

**TRACK FORWARD:** Press & hold 1+ sec

**ANSWER:** Single tap

**HANGUP:** Double tap

**REJECT INCOMING CALLS:**

Press & hold 1+ sec

**BE AWARE ON / OFF:** Triple tap

**POWER ON:** Press & hold 3+ sec

## VOICE PROMPTS

**"Hello":** Power ON

**"Earbuds joined":**

Earbuds paired to each other

**"Ready to Pair":** JBuds Air Exec are ready to pair to Bluetooth device

**"Bluetooth Connected":**

Earbud is connected to device

**"Battery Full":** 100-80%

**"Battery Medium":** 80-20%

**"Low Battery":** Less than 20%  
When power decreases to 10%,  
"Low Battery" will play

**"Goodbye":** Power OFF

## TURN OFF EARBUDS WITHOUT CHARGING CASE:

Enter your Bluetooth device settings and disconnect the JBuds Air Executive. Earbuds will power OFF after 3 minutes.

## EQUALIZER MODES

Triple tap left earbud for different EQ settings. Voice prompts will indicate EQ settings (JBuds Air Exec will cycle 3 EQ settings)



**JLab SIGNATURE**

JLab C3™ signature  
sound with amplified  
bass and vocals



**BALANCED**

Even sound with  
no additional  
enhancements



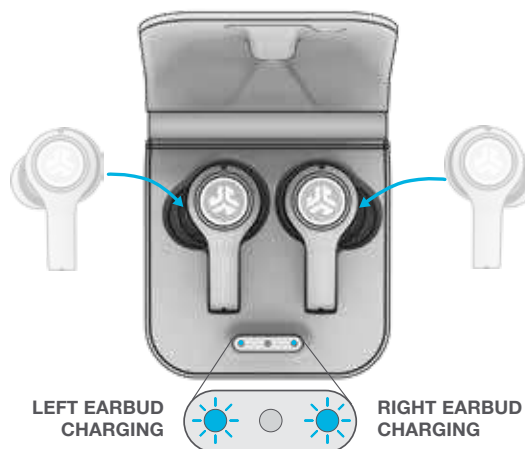
**BASS BOOST**

Amplified bass  
and sub-bass

## CHARGING EARBUDS

1

Placing the earbuds in the charging case will power OFF earbuds and start charging. **Blue lights** indicate earbuds are charging and will turn off when fully charged.

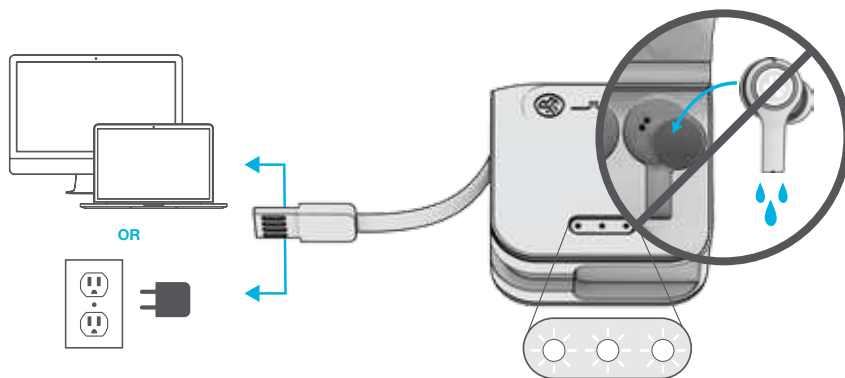


2

When earbuds are taken out of the case, they will auto power ON and reconnect to your device.

## CHARGING CASE

Connect the JBuds Air Executive to computer or USB 5V 1A (or less) output device.

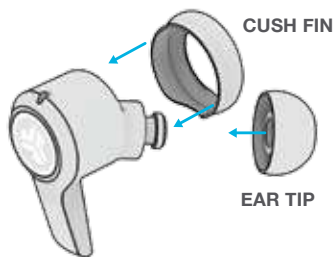


Lights **pulse white** when  
charging and **turn solid white**  
when fully charged.

## FITTING

Try the optional Cush Fins and all ear tips for best fit and proper seal.

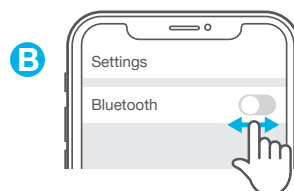
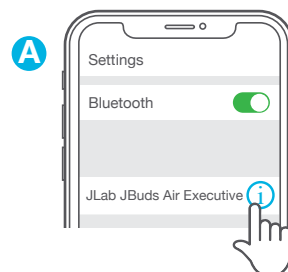
Place the earbud in the ear canal and slightly rotate to adjust for best fit.



## TROUBLESHOOTING

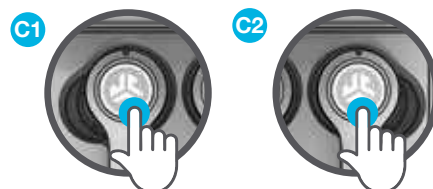
### NO AUDIO IN LEFT EARBUD OR EARBUDS DISCONNECT FROM EACH OTHER (MANUAL RESET)

- 1 Enter your Bluetooth device settings and forget the JBuds Air Executive. Fig **A**
- 2 Open the charging case door and leave both earbuds inside. Starting with **ONE** earbud, **quickly tap the touch sensor 4x times**. Light will **blink blue 4x times** then **turn solid blue**. Leave the earbuds in the charging case. Fig **C1**
- 3 Repeat with other earbud. **Quickly tap the touch sensor 4x times**. Light will **blink blue 4x times** then **turn solid blue**. Fig **C2**
- 4 Take both earbuds out of the charging case and keep them within 2 inches from each other. Wait for Left earbud to turn **solid white** and Right to **blink blue/white**. You are now ready to pair to your Bluetooth device.



### BLUETOOTH DEVICE DOES NOT CONNECT/RECONNECT

- 1 Enter your Bluetooth device settings and forget the JBuds Air Executive. Fig **A**
- 2 Turn OFF then ON Bluetooth. Fig **B**
- 3 Take the earbuds out of the case. Wait for Left to turn **solid white** and Right **blinking blue/white**.
- 4 Select "JLab JBuds Air Executive" in device settings to reconnect.



Instructional videos at: [JLABAUDIO.COM/MANUALS](http://JLABAUDIO.COM/MANUALS)

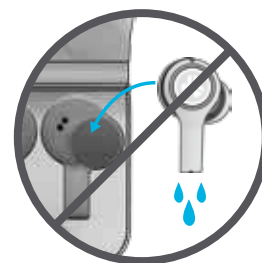
## QUICK TIPS

- Fully dry off the earbuds before putting in the charging case to avoid any damage to the case. The earbuds are sweat/water resistant but the case is not.
- The Bluetooth connection is established from the right earbud. For the most stable connection, keep the device near right hand side or in right pocket.
- If you prefer to wear only one earbud, you must wear the **right earbud**.
- Only ONE Bluetooth device can be connected at a time. Turn off Bluetooth on unwanted devices and turn on Bluetooth on chosen device to connect.

## WARNING

**Fully dry off the earbuds before placing in the charging case.**

If the earbuds are damp or wet, this will cause damage to the charging case. The warranty will be voided if the charging case shows damage by water/sweat.



## CAUTIONS

- Avoid extreme heat, cold, and humidity.
  - Avoid dropping or crushing the earbuds.
  - Wax may build up in the earbud tips, lowering the sound quality.  
Carefully remove the wax with a cotton swab or other small tool to improve the sound quality.
  - If you experience discomfort or pain, try lowering the volume or discontinuing use temporarily.
  - If you experience regular discomfort while using this product, discontinue use and consult your physician.
  - We recommend you treat your earbuds as you would a nice pair of sunglasses and keep them in safe location when not in use.
- 



[Shop products](#) | [Product alerts](#) | [Burn-in your headphones](#)

JLab Audio + Burn-in Tool



NOTE: This equipment has been tested and found to comply with the limits for a Class B digital device, pursuant to part 15 of the FCC Rules. These limits are designed to provide reasonable protection against harmful interference in a residential installation. This equipment generates uses and can radiate radio frequency energy and, if not installed and used in accordance with the instructions, may cause harmful interference to radio communications. However, there is no guarantee that interference will not occur in a particular installation. If this equipment does cause harmful interference to radio or television reception, which can be determined by turning the equipment off and on, the user is encouraged to try to correct the interference by one or more of the following measures:

- Reorient or relocate the receiving antenna.
- Increase the separation between the equipment and receiver.
- Connect the equipment into an outlet on a circuit different from that to which the receiver is connected.
- Consult the dealer or an experienced radio/TV technician for help

Changes or modifications not expressly approved by the party responsible for compliance could void the user's authority to operate the equipment.

This device complies with Part 15 of the FCC Rules. Operation is subject to the following two conditions:

(1) this device may not cause harmful interference, and (2) this device must accept any interference received, including interference that may cause undesired operation.