

ENGLISH

Connect the mouse to one computer using the receiver and up to two computers via Bluetooth®.

To program the mouse buttons or change the DPI setting (1200 DPI by default), use the software. If the software does not download automatically, on your computer, open **Microsoft Store** or **App Store**. Search for **HP Accessory Center**, and then download the app.

Components description

- 1 Programmable forward button**  
By default, press to display the next page in your application history.
- 2 Programmable back button**  
By default, press to display the previous page in your application history.
- 3 Programmable scroll wheel**  
Scrolls the screen up or down. Click to use application-specific functions, and click and hold to scroll when you move the mouse up or down. Press directly down on the scroll wheel to middle-click. Tilt right or tilt left to use functions programmed in the app. By default, tilt right to scroll the screen right and tilt left to scroll the screen left.
- 4 Hyperscroll button**  
Press to turn hyperscroll on or off.
- 5 Battery light**  
**White (5 s):** The mouse is on.  
**Blinking amber:** The mouse needs to be charged.  
**Solid amber:** The mouse is charging.  
**Solid white:** The mouse is fully charged and connected to power.
- 6 Power switch**  
Turns the mouse on or off.
- 7 Receiver light**  
**Quickly blinking white (180 s):** The receiver channel is currently selected and the receiver is not connected to a computer.  
**Solid white (5 s):** The mouse is connected to the computer the receiver is connected to.
- 8 Bluetooth pairing lights**  
**Two blinks and a pause (180 s):** The mouse is reconnecting to a previously paired device.  
**Solid (5 s):** The Bluetooth connection or reconnection was successful.  
**Slowly blinking (180 s):** The Bluetooth channel is currently selected, and the mouse is in pairing mode.
- 9 Pairing button**  
Press to switch between channels. Press and hold for 2 s to enter pairing mode for the selected channel.

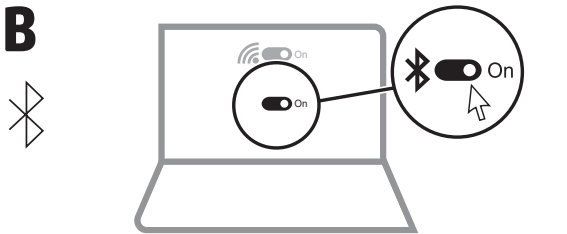
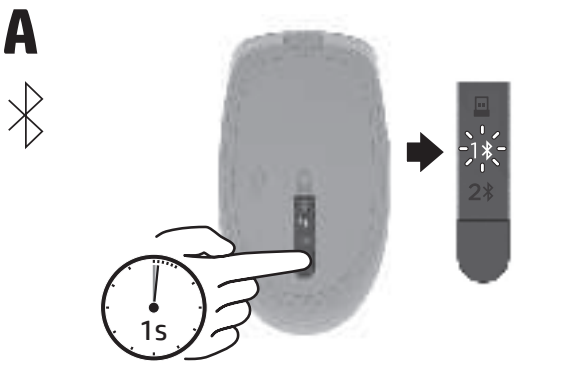
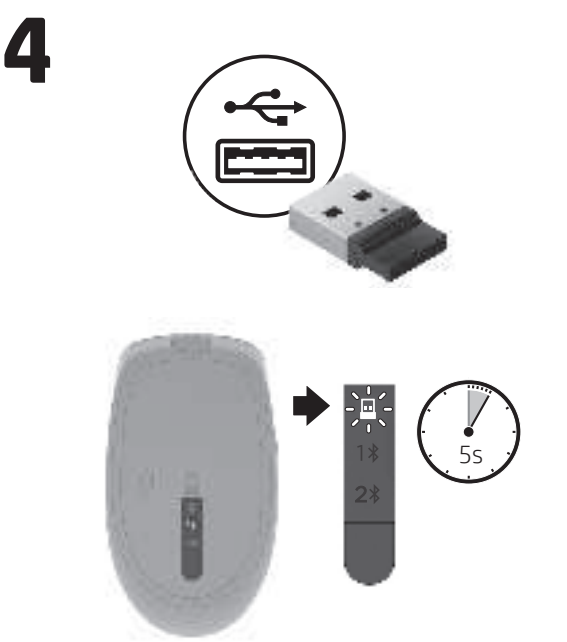
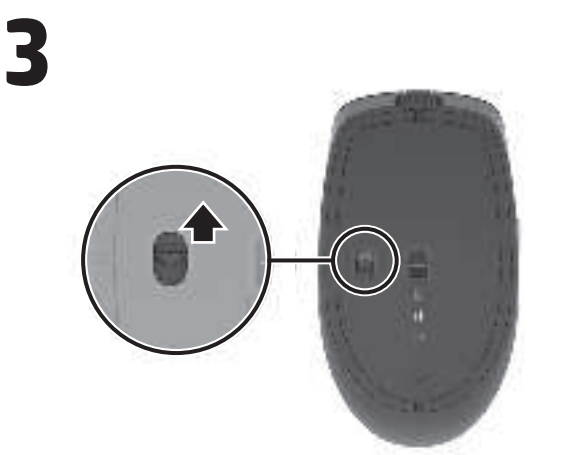
INTERNATIONAL SPANISH

Connect the mouse to one computer using the receiver and up to two computers via Bluetooth.

To program the mouse buttons or change the DPI setting (1200 DPI by default), use the software. If the software does not download automatically, on your computer, open **Microsoft Store** or **App Store**. Search for **HP Accessory Center**, and then download the app.

Components description

- 1 Programmable forward button**  
By default, press to display the next page in your application history.
- 2 Programmable back button**  
By default, press to display the previous page in your application history.
- 3 Programmable scroll wheel**  
Scrolls the screen up or down. Click to use application-specific functions, and click and hold to scroll when you move the mouse up or down. Press directly down on the scroll wheel to middle-click. Tilt right or tilt left to use functions programmed in the app. By default, tilt right to scroll the screen right and tilt left to scroll the screen left.
- 4 Hyperscroll button**  
Press to turn hyperscroll on or off.
- 5 Battery light**  
**White (5 s):** The mouse is on.  
**Blinking amber:** The mouse needs to be charged.  
**Solid amber:** The mouse is charging.  
**Solid white:** The mouse is fully charged and connected to power.
- 6 Power switch**  
Turns the mouse on or off.
- 7 Receiver light**  
**Quickly blinking white (180 s):** The receiver channel is currently selected and the receiver is not connected to a computer.  
**Solid white (5 s):** The mouse is connected to the computer the receiver is connected to.
- 8 Bluetooth pairing lights**  
**Two blinks and a pause (180 s):** The mouse is reconnecting to a previously paired device.  
**Solid (5 s):** The Bluetooth connection or reconnection was successful.  
**Slowly blinking (180 s):** The Bluetooth channel is currently selected, and the mouse is in pairing mode.
- 9 Pairing button**  
Press to switch between channels. Press and hold for 2 s to enter pairing mode for the selected channel.



This device complies with part 15 of the FCC Rules. Operation is subject to the following two conditions: (1) This device may not cause harmful interference, and (2) this device must accept any interference received, including interference that may cause undesired operation.

RMN/型號/型号: TPA-A001M + TPA-A001D

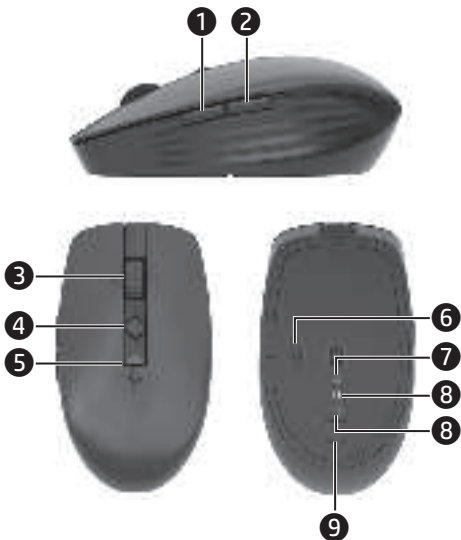
© Copyright 2022 HP Development Company, L.P.  
The Bluetooth trademarks are owned by their proprietor and used by HP Inc. under license.

The information contained herein is subject to change without notice. The only warranties for HP products and services are set forth in the express warranty statements accompanying such products and services. Nothing herein should be construed as constituting an additional warranty. HP shall not be liable for technical or editorial errors or omissions contained herein.

First Edition: December 2022



N20159-001



- EN** For regulatory, certification, and environmental information, including Restriction of Hazardous Substances (RoHS), scan the QR code, or go to [www.hp.com/go/regulatory](http://www.hp.com/go/regulatory).
- ES** For regulatory, certification, and environmental information, including Restriction of Hazardous Substances (RoHS), scan the QR code, or go to [www.hp.com/go/regulatory](http://www.hp.com/go/regulatory).
- FR** For regulatory, certification, and environmental information, including Restriction of Hazardous Substances (RoHS), scan the QR code, or go to [www.hp.com/go/regulatory](http://www.hp.com/go/regulatory).
- BR** For regulatory, certification, and environmental information, including Restriction of Hazardous Substances (RoHS), scan the QR code, or go to [www.hp.com/go/regulatory](http://www.hp.com/go/regulatory).

**FRENCH**

Connect the mouse to one computer using the receiver and up to two computers via Bluetooth.

To program the mouse buttons or change the DPI setting (1200 DPI by default), use the software. If the software does not download automatically, on your computer, open **Microsoft Store** or **App Store**. Search for **HP Accessory Center**, and then download the app.

**Components description**

- 1 Programmable forward button**  
By default, press to display the next page in your application history.
- 2 Programmable back button**  
By default, press to display the previous page in your application history.
- 3 Programmable scroll wheel**  
Scrolls the screen up or down. Click to use application-specific functions, and click and hold to scroll when you move the mouse up or down. Press directly down on the scroll wheel to middle-click. Tilt right or tilt left to use functions programmed in the app. By default, tilt right to scroll the screen right and tilt left to scroll the screen left.
- 4 Hyperscroll button**  
Press to turn hyperscroll on or off.
- 5 Battery light**  
**White (5 s):** The mouse is on.  
**Blinking amber:** The mouse needs to be charged.  
**Solid amber:** The mouse is charging.  
**Solid white:** The mouse is fully charged and connected to power.
- 6 Power switch**  
Turns the mouse on or off.
- 7 Receiver light**  
**Quickly blinking white (180 s):** The receiver channel is currently selected and the receiver is not connected to a computer.  
**Solid white (5 s):** The mouse is connected to the computer the receiver is connected to.
- 8 Bluetooth pairing lights**  
**Two blinks and a pause (180 s):** The mouse is reconnecting to a previously paired device.  
**Solid (5 s):** The Bluetooth connection or reconnection was successful.  
**Slowly blinking (180 s):** The Bluetooth channel is currently selected, and the mouse is in pairing mode.
- 9 Pairing button**  
Press to switch between channels. Press and hold for 2 s to enter pairing mode for the selected channel.

**BRAZILIAN PORTUGUESE**

Connect the mouse to one computer using the receiver and up to two computers via Bluetooth.

To program the mouse buttons or change the DPI setting (1200 DPI by default), use the software. If the software does not download automatically, on your computer, open **Microsoft Store** or **App Store**. Search for **HP Accessory Center**, and then download the app.

**Components description**

- 1 Programmable forward button**  
By default, press to display the next page in your application history.
- 2 Programmable back button**  
By default, press to display the previous page in your application history.
- 3 Programmable scroll wheel**  
Scrolls the screen up or down. Click to use application-specific functions, and click and hold to scroll when you move the mouse up or down. Press directly down on the scroll wheel to middle-click. Tilt right or tilt left to use functions programmed in the app. By default, tilt right to scroll the screen right and tilt left to scroll the screen left.
- 4 Hyperscroll button**  
Press to turn hyperscroll on or off.
- 5 Battery light**  
**White (5 s):** The mouse is on.  
**Blinking amber:** The mouse needs to be charged.  
**Solid amber:** The mouse is charging.  
**Solid white:** The mouse is fully charged and connected to power.
- 6 Power switch**  
Turns the mouse on or off.
- 7 Receiver light**  
**Quickly blinking white (180 s):** The receiver channel is currently selected and the receiver is not connected to a computer.  
**Solid white (5 s):** The mouse is connected to the computer the receiver is connected to.
- 8 Bluetooth pairing lights**  
**Two blinks and a pause (180 s):** The mouse is reconnecting to a previously paired device.  
**Solid (5 s):** The Bluetooth connection or reconnection was successful.  
**Slowly blinking (180 s):** The Bluetooth channel is currently selected, and the mouse is in pairing mode.
- 9 Pairing button**  
Press to switch between channels. Press and hold for 2 s to enter pairing mode for the selected channel.

